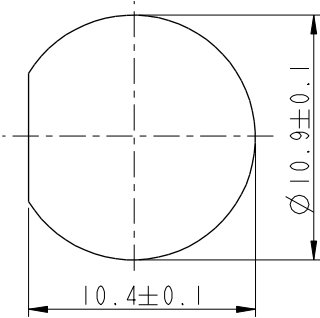
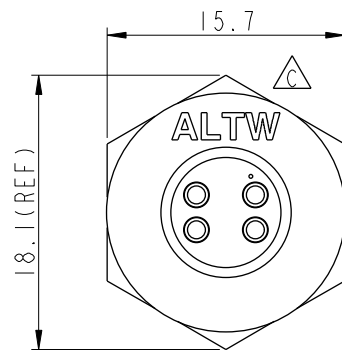
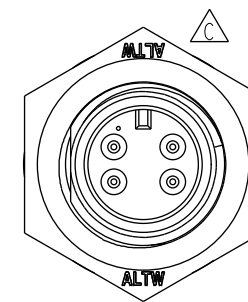
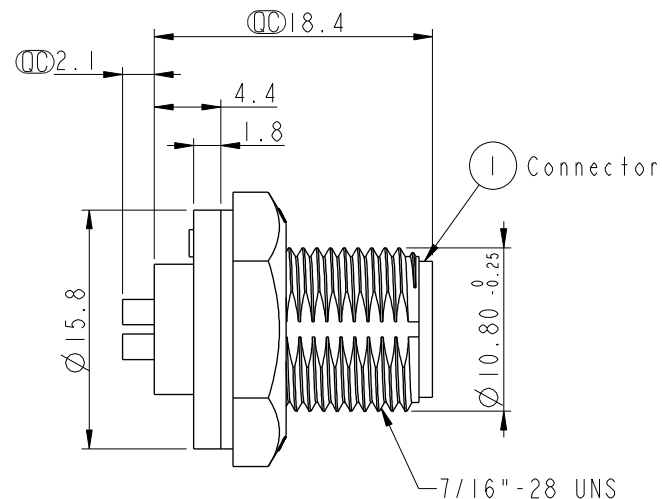
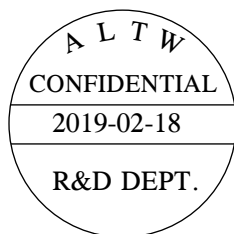
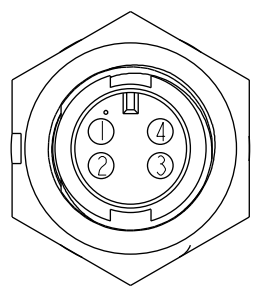


REV.	ECN NO.	DATE	SIGN	DESCRIPTION
B	LEN-8A0108	2008/09/15	Shin	Add Notes
C	LEN1741238	2017/04/17	Ruru	Change Logo
D	CI90268	2019/02/18	Ruru	Modify Note

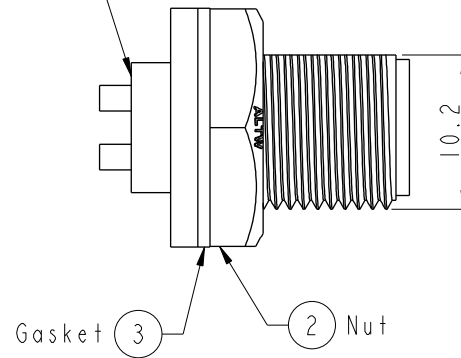


Recommended
Panel Cut-Out



Pin Assignments
Front View

With Liquid Glue



Note:

- * Important Dimension.
- * Waterproof Rate: IP67, Unmated
- * Housing: Thermoplastic, Black
- * Pin: Copper Alloy, Gold Plated
- * Nut: Thermoplastic, Black
- * Gasket: Rubber, Black

* Use with waterproof cap or dust cap
Panel Thickness max: 4.0mm

* Use without waterproof cap or dust cap
Panel Thickness max: 5.0mm

* Gasket and Nut are packed separately
in PE bags.

UNIT:mm		TITLE		Amphenol LTW		ITEM NO	DRAWN BY	DATE
		Mini		安費諾亮泰企業股份有限公司		AU-04PMMS-SC7001	Ruru	2019-02-18
TOLERANCE		SCALE	SIZE	SHEET	OF	DWG NO	CHECKED BY	DATE
.X ±0.25		2:1	A4	1	1	AU-04PMMS-SC7001	Rita	2019-02-18
.XX ±0.1		REV.	WC-REV.	QC: Inspection item		CUSTOMER	APPROVED BY	DATE
.XXX ±0.05		D	A.2			ALTW	Max	2019-02-18
ANGLES ±1°								

Mouser Electronics

Authorized Distributor

Click to View Pricing, Inventory, Delivery & Lifecycle Information:

[Amphenol:](#)

[AU-04PMMS-SC7001](#)