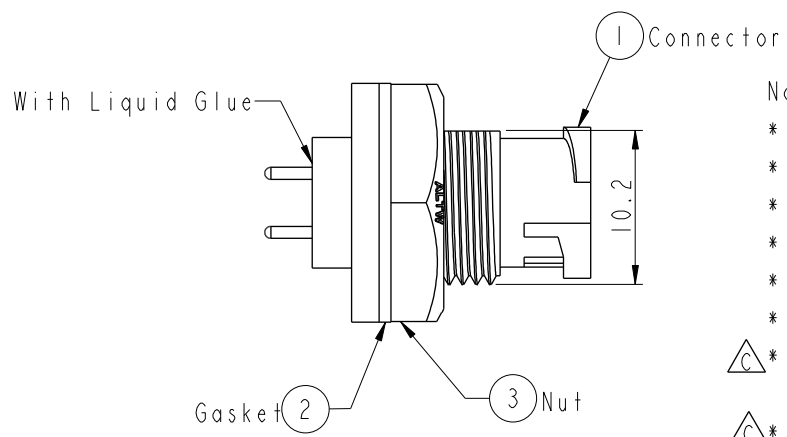
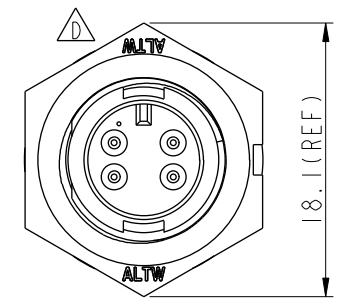
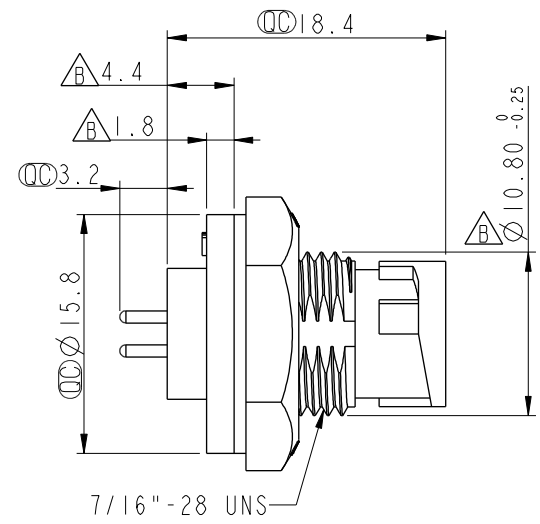
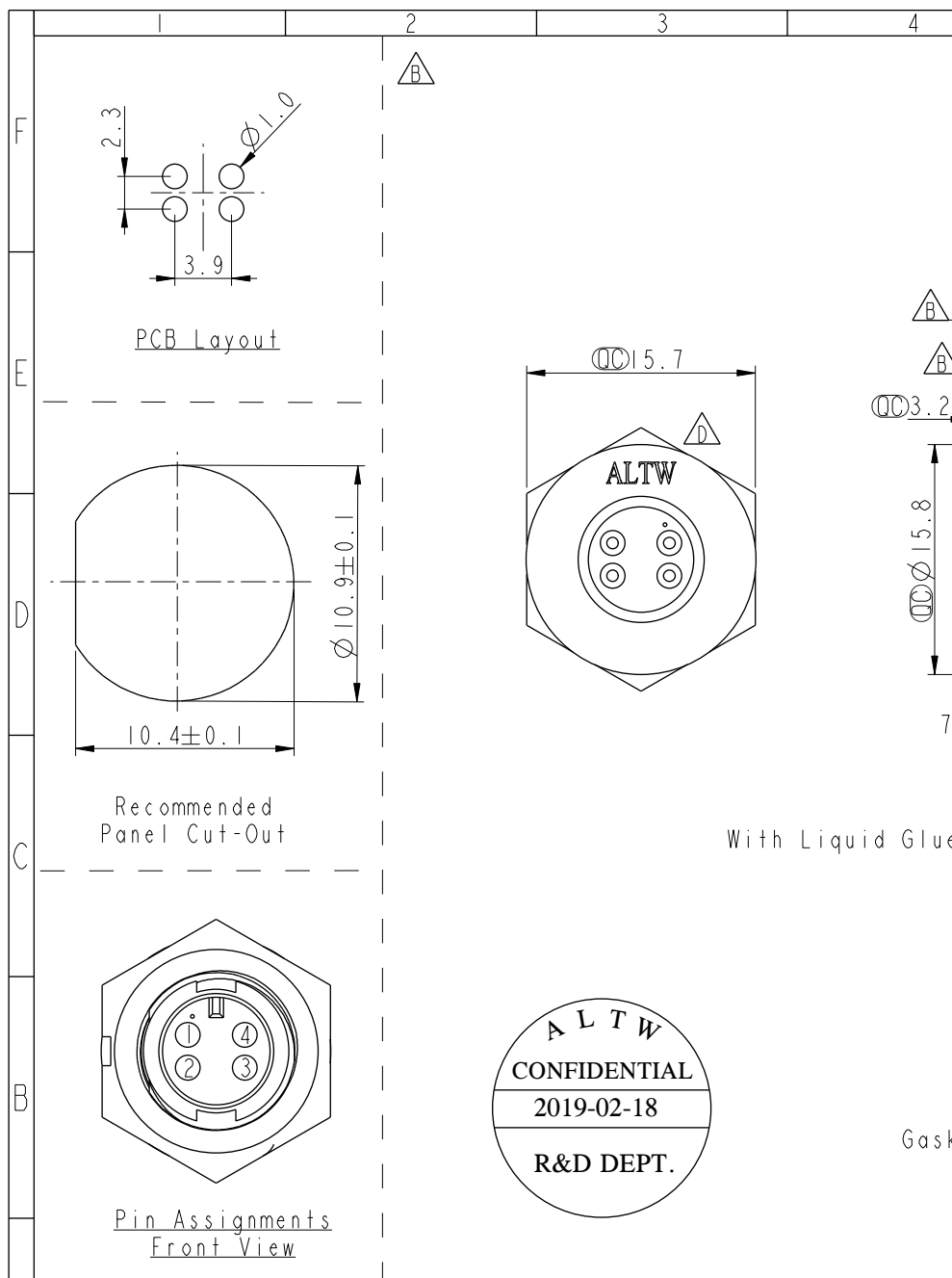


THIS DOCUMENT IS SUBJECT TO CHANGE WITHOUT NOTICE. IT IS CONFIDENTIAL AND A PROPERTY OF Amphenol LTW. DISCLOSURE TO THIRD PARTY HAS TO BE AUTHORIZED BY Amphenol LTW.

| REV. | ECN NO. | DATE | SIGN | DESCRIPTION |
|------|------------|------------|------|-------------|
| C | LEN-8A0142 | 2008/09/15 | Shin | Add Notes |
| D | LEN1530181 | 2014/12/17 | Ruru | Change Logo |
| E | CI90268 | 2019/02/18 | Ruru | Modify Note |



- Note: Important Dimension.
- * Waterproof Rate: IP67, Unmated
 - * Housing: Thermoplastic, Black
 - * Pin: Copper Alloy, Gold Plated
 - * Nut: Thermoplastic, Black
 - * Gasket: Rubber, Black
- * Use with waterproof cap or dust cap
Panel Thickness max: 2.5mm
- * Use without waterproof cap or dust cap
Panel Thickness max: 3.5mm
- * Gasket and Nut are packed separately in PE bags.

| | | | | | | | | | | | |
|------------|--|-------------------------------|--|---------------|--|------------------|--|-------------|--|------------|--|
| UNIT:mm | | TITLE | | Amphenol LTW | | ITEM NO | | DRAWN BY | | DATE | |
| TOLERANCE | | Mini | | 安費諾亮泰企業股份有限公司 | | AU-04PMMP-LC7001 | | Ruru | | 2019-02-18 | |
| .X ±0.25 | | Panel Lock 4Pin M Conn. M Pin | | | | DWG NO | | Rita | | 2019-02-18 | |
| .XX ±0.1 | | SCALE | | | | AU-04PMMP-LC7001 | | APPROVED BY | | Max | |
| .XXX ±0.05 | | SIZE | | | | CUSTOMER | | | | 2019-02-18 | |
| ANGLES ±1° | | REV. | | | | ALTW | | | | | |
| | | WC-REV. | | | | | | | | | |
| | | A.2 | | | | | | | | | |
| | | SHEET | | | | | | | | | |
| | | 1 OF 1 | | | | | | | | | |
| | | QC: Inspection item | | | | | | | | | |

Mouser Electronics

Authorized Distributor

Click to View Pricing, Inventory, Delivery & Lifecycle Information:

[Amphenol:](#)

[AU-04PMMP-LC7001](#)