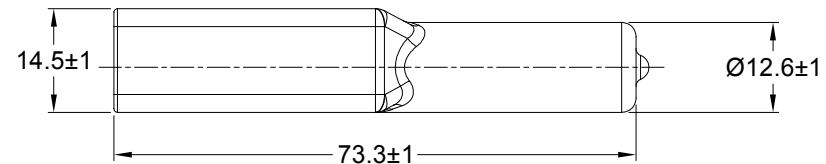
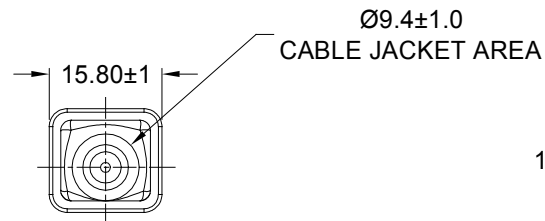
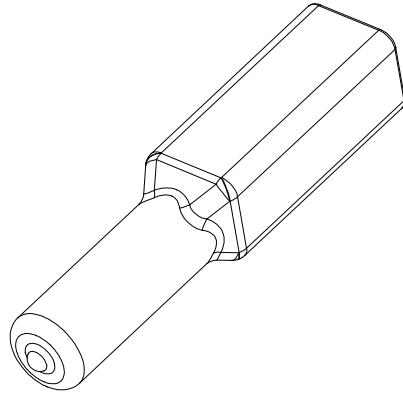


REVISIONS					
REV	ECO	DESCRIPTION	DATE	BY	APPR
A1	-	RELEASE NUMBER	28AUG19	BROOK	TOMMY



PART NUMBER CHART	
COLOR	PART NUMBER
GREY	AT2P-BT
BLACK	AT2P-BT-BK
YELLOW	AT2P-BT-YW

NOTES: UNLESS OTHERWISE SPECIFIED

- THIS PART IS USED ON AT04-2P RECEPTACLE
ANY MODIFICTION DOES NOT INCLUDE AN END CAP.
- TEMPERATURE RATING : -29°C TO +100°C [-20°F TO +212°F]
- ALL DIMENSIONS ARE FOR REFERENCE USE ONLY.

SEE PART NUMBER CHART		REF:DT2P-BT ,DT2P-BT-BK ,DT2P-BT-YW				
PART NUMBER		DESCRIPTION			ITEM	
QUANTITY	MATERIALS LIST					
<div>UNLESS OTHERWISE SPECIFIED</div> <div>1) All dimensions are in metric(mm).</div> <div>2) Tolerances are as follows:</div> <div>1 PL DEC ±0.30</div> <div>2 PL DEC ±0.15</div> <div>3 PL DEC ±0.08</div> <div>3) Note reference =</div> <div>Fractions ±1/64</div> <div>Angles ±1°</div> <div>X</div>		<div>SIGNATURES</div> <div>DRAWN:</div> <div>BROOK.DING</div> <div>CHECKED:</div> <div>ORION.LI</div> <div>ENGINEER:</div> <div>APPROVAL:</div> <div>TOMMY.XIE</div> <div>CUSTOMER:</div> <div>DATE</div> <div>28AUG19</div> <div>28AUG19</div> <div>28AUG19</div>		<div>Amphenol</div> <div>Sine Systems - www.amphenol-sine.com</div> <div>44724 Morley Drive</div> <div>Clinton Township, MI 48036</div>		
MATERIAL SPECIFICATIONS:		BOOT, AT,2 WAY,RECEPTACLE				
PVC						
PROCESS SPECIFICATIONS:						
NEXT ASS'Y:		SIZE		TYPE	DWG NO:	REVISION
		A		C-	AT2P-BT-XX	A1
		SCALE:		NONE		
		SHEET		1	OF	1

Mouser Electronics

Authorized Distributor

Click to View Pricing, Inventory, Delivery & Lifecycle Information:

[Amphenol:](#)

[AT2P-BT](#) [AT2P-BT-BK](#) [AT2P-BT-YW](#)