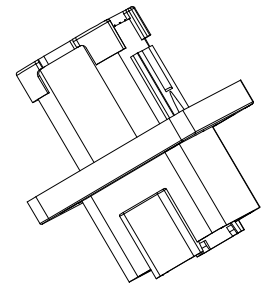
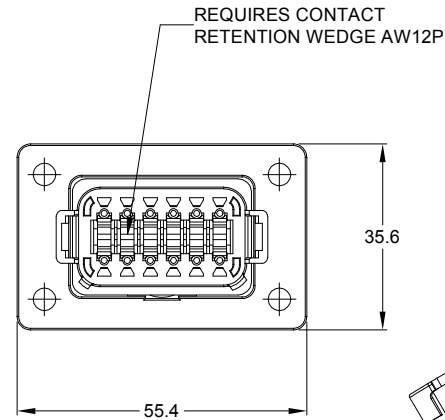
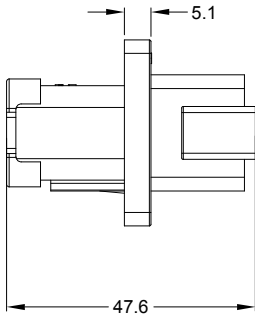
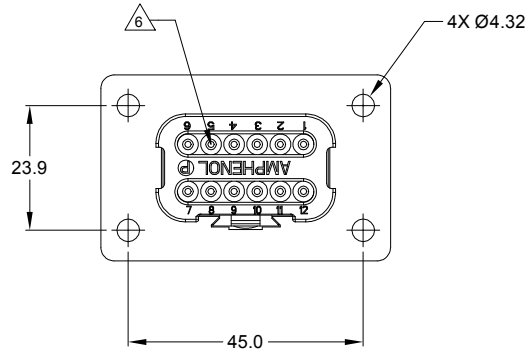
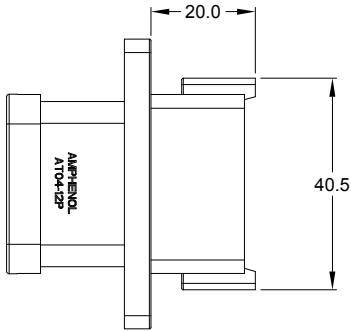


| REVISIONS | | | | | |
|-----------|-----|----------------|-----------|--------|-------|
| REV | ECO | DESCRIPTION | DATE | BY | APPR |
| A1 | - | RELEASE NUMBER | 30/NOV/18 | ROOKIE | TOMMY |



NOTES: UNLESS OTHERWISE SPECIFIED

1. SEE SHEET 2 FOR KEY ARRANGEMENTS AND COLORS.

2. MATERIAL:
HOUSING: THERMOPLASTIC
SEAL: SILICONE RUBBER

3. MODIFICATIONS: FLANGE, END CAP


4. SPECIFICATIONS:
4.1 CURRENT RATING: 13 AMPS
4.2 OPERATING TEMPERATURE: -55°C TO +125°C.
4.3 DIELECTRIC WITHSTANDING VOLTAGE: LESS THAN 2 MILLIAMPS CURRENT LEAKAGE @ 1500 VOLTS AC.
4.4 INSULATION RESISTANCE: 1000 MEGOHMS MIN @ 25°C.
4.5 MOISTURE RESISTANCE: IP67 (MATED CONDITION)
4.6 MATING CYCLE DURABILITY: 100 CYCLES
4.7 RoHS COMPLIANT

5. MATING PART: AT06-12SX* PLUG.
(X=A,B,C,D KEYS, * = MODIFICATIONS AND COLORS)

6. ALL DIMENSIONS ARE FOR REFERENCE USE ONLY.

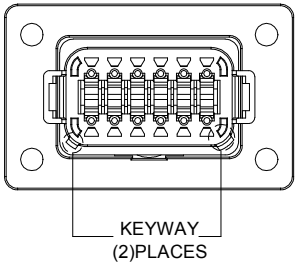
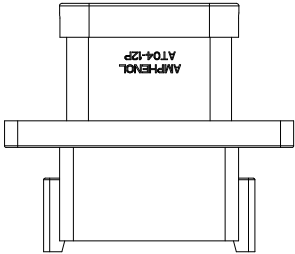
7. CONTACT SIZE AND REAR SEAL WIRE RANGE:

| CONTACT SIZE | MIN. INSUL O.D. | MAX. INSUL O.D. | TYPICAL WIRE RANGE |
|--------------|-------------------|-------------------|--------------------|
| 16 | 2.24 mm (.088 in) | 3.68 mm (.145 in) | 14 - 20 AWG |

| | | | | | |
|---|----------------|--|--|---|--|
| SEE SHEET 2 | | DESCRIPTION | | ITEM | |
| PART NUMBER | | | | | |
| QUANTITY | MATERIALS LIST | | | | |
| <div>UNLESS OTHERWISE SPECIFIED</div> <div>1) All dimensions are in metric(mm).</div> <div>2) Tolerances are as follows:</div> <div>1 PL DEC ±0.30</div> <div>2 PL DEC ±0.16</div> <div>3 PL DEC ±0.08</div> <div>3) Note reference = </div> | | <div>SIGNATURES</div> <div>DRAWN: ROOKIE</div> <div>CHECKED: ORION</div> <div>ENGINEER:</div> <div>APPROVAL: TOMMY</div> <div>CUSTOMER:</div> <div>THIS DRAWING IS SUPPLIED FOR INFORMATION ONLY. DESIGN FEATURES, SPECIFICATIONS AND PERFORMANCE DATA SHOWN HEREON ARE THE PROPERTY OF THE AMPHENOL CORPORATION. NO RIGHTS OF REPRODUCTION ARE IMPLIED. ALL DIMENSIONS ARE SUBJECT TO NORMAL MANUFACTURING VARIATIONS.</div> | | <div>DATE</div> <div>30NOV/18</div> <div>30NOV/18</div> <div>30NOV/18</div> <div>30NOV/18</div> | <div>Amphenol</div> <div>Sine Systems - www.amphenol-sine.com</div> <div>44724 Morley Drive</div> <div>Clinton Township, MI 48036</div> |
| MATERIAL SPECIFICATIONS: | | 12P RECEPTACLE, FLANGE MOUNT, END CAP | | | |
| PROCESS SPECIFICATIONS: | | SIZE TYPE DWG NO: REVISION | | | |
| NEXT ASSY: | | B C- AT04-12PX-LE07 A1 | | | |
| | | SCALE: NONE SHEET 1 OF 3 | | | |

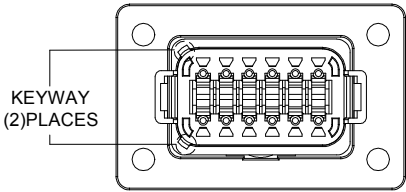
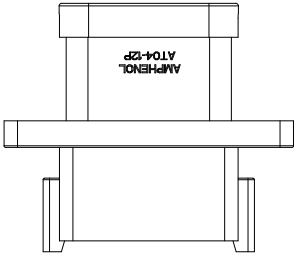
| REVISIONS | | | | | |
|-----------|-----|----------------|-----------|--------|-------|
| REV | ECO | DESCRIPTION | DATE | BY | APPR |
| A1 | - | RELEASE NUMBER | 30/NOV/18 | ROOKIE | TOMMY |

KEY A CONFIGURATION
STANDARD COLOR:GREY



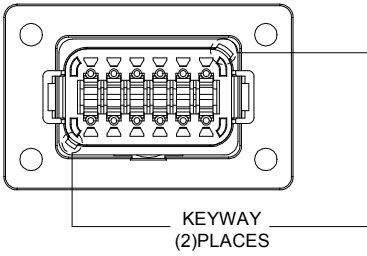
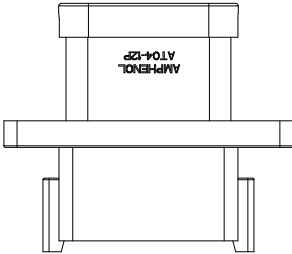
| KEY-A CONFIGURATION | |
|---------------------|----------------|
| COLOR | PART NUMBER |
| GREY | AT04-12PA-LE07 |

KEY B CONFIGURATION
STANDARD COLOR:BLACK



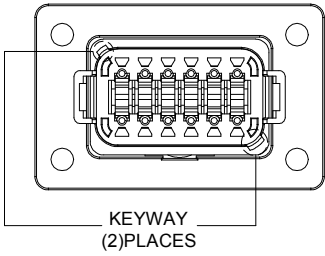
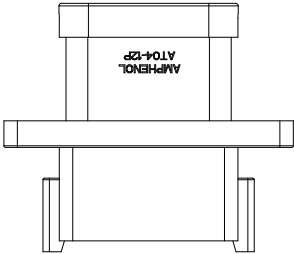
| KEY-B CONFIGURATION | |
|---------------------|----------------|
| COLOR | PART NUMBER |
| BLACK | AT04-12PB-LE07 |

KEY C CONFIGURATION
STANDARD COLOR:GREEN




| KEY-C CONFIGURATION | |
|---------------------|----------------|
| COLOR | PART NUMBER |
| GREEN | AT04-12PC-LE07 |

KEY D CONFIGURATION
STANDARD COLOR:BROWN

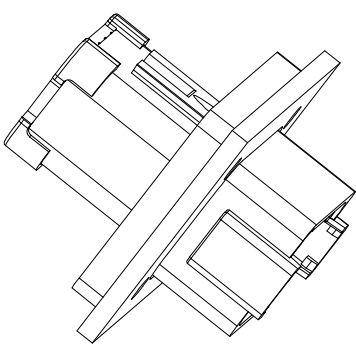


| KEY-D CONFIGURATION | |
|---------------------|----------------|
| COLOR | PART NUMBER |
| BROWN | AT04-12PD-LE07 |

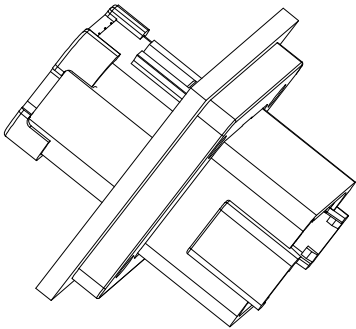
| | | | | |
|---|----------------|--|---|--|
| SEE SHEET 2 | | DESCRIPTION | | ITEM |
| PART NUMBER | | | | |
| QUANTITY | MATERIALS LIST | | | |
| UNLESS OTHERWISE SPECIFIED 1) All dimensions are in metric(mm). 2) Tolerances are as follows: 1 PL DEC ±0.30 2 PL DEC ±0.15 3 PL DEC ±0.06 3) Note reference =  | | SIGNATURES DRAWN: ROOKIE CHECKED: ORION ENGINEER: APPROVAL: TOMMY CUSTOMER: | DATE 30/NOV/18 30/NOV/18 30/NOV/18 | <div>Amphenol</div> <div>Sine Systems - www.amphenol-sine.com 44724 Morley Drive Clinton Township, MI 48036</div> <div>12P RECEPTACLE, FLANGE MOUNT, END CAP</div> |
| MATERIAL SPECIFICATIONS: | | | | |
| PROCESS SPECIFICATIONS: | | THIS DRAWING IS SUPPLIED FOR INFORMATION ONLY. DESIGN FEATURES, SPECIFICATIONS AND PERFORMANCE DATA SHOWN HEREON ARE THE PROPERTY OF THE AMPHENOL CORPORATION. NO RIGHTS OF REPRODUCTION ARE IMPLIED. ALL DIMENSIONS ARE SUBJECT TO NORMAL MANUFACTURING VARIATIONS. | | |
| NEXT ASSY: | | | | |
| | | SIZE B C- SCALE: NONE | TYPE DWG NO: AT04-12PX-LE07 | REVISION A1 |
| | | SHEET 2 OF 3 | | |

| REVISIONS | | | | | |
|-----------|-----|----------------|-----------|--------|-------|
| REV | ECO | DESCRIPTION | DATE | BY | APPR |
| A1 | - | RELEASE NUMBER | 30/NOV/18 | ROOKIE | TOMMY |

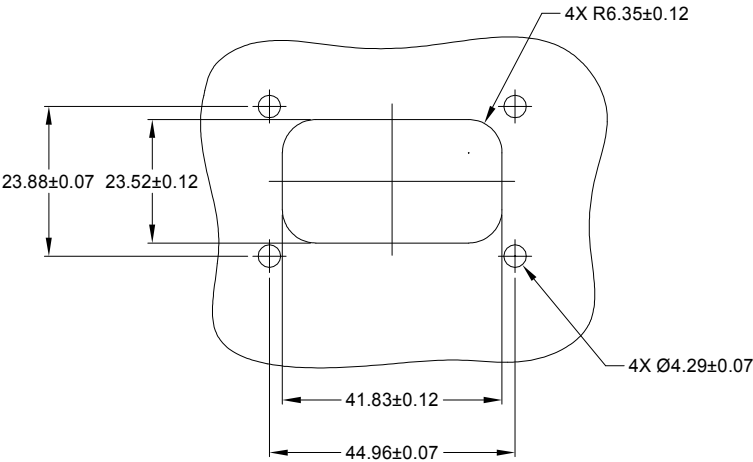
FOR REFERENCE ONLY




FRONT MOUNT



REAR MOUNT



RECOMMENDED CUTOUT
FRONT AND REAR MOUNT

| SEE SHEET 2 | | | | | | | | | | | | | | | | |
|---|-----------|---|----------|------|-------------|---------|----------------------|-----------|-----------------------|-----------|----------------|----|------------------------|-----------|-----------|--|
| PART NUMBER | | DESCRIPTION | | ITEM | | | | | | | | | | | | |
| QUANTITY | | | | | | | | | | | | | | | | |
| MATERIALS LIST | | | | | | | | | | | | | | | | |
| UNLESS OTHERWISE SPECIFIED 1) All dimensions are in metric(mm). 2) Tolerances are as follows: 1 PL DEC ±0.30 2 PL DEC ±0.15 3 PL DEC ±0.08 3) Note reference =  | | <table><tr><th>SIGNATURES</th><th>DATE</th></tr><tr><td>DRAWN: ROOKIE</td><td>30/NOV/18</td></tr><tr><td>CHECKED: ORION</td><td>30/NOV/18</td></tr><tr><td>ENGINEER:</td><td></td></tr><tr><td>APPROVAL: TOMMY</td><td>30/NOV/18</td></tr><tr><td>CUSTOMER:</td><td></td></tr></table> <p>THIS DRAWING IS SUPPLIED FOR INFORMATION ONLY. DESIGN FEATURES, SPECIFICATIONS AND PERFORMANCE DATA SHOWN HEREON ARE THE PROPERTY OF THE AMPHENOL CORPORATION. NO RIGHTS OF REPRODUCTION ARE IMPLIED. ALL DIMENSIONS ARE SUBJECT TO NORMAL MANUFACTURING VARIATIONS.</p> | | | SIGNATURES | DATE | DRAWN: ROOKIE | 30/NOV/18 | CHECKED: ORION | 30/NOV/18 | ENGINEER: | | APPROVAL: TOMMY | 30/NOV/18 | CUSTOMER: | |
| SIGNATURES | DATE | | | | | | | | | | | | | | | |
| DRAWN: ROOKIE | 30/NOV/18 | | | | | | | | | | | | | | | |
| CHECKED: ORION | 30/NOV/18 | | | | | | | | | | | | | | | |
| ENGINEER: | | | | | | | | | | | | | | | | |
| APPROVAL: TOMMY | 30/NOV/18 | | | | | | | | | | | | | | | |
| CUSTOMER: | | | | | | | | | | | | | | | | |
| MATERIAL SPECIFICATIONS: | | <div>Amphenol Sine Systems - www.amphenol-sine.com 44724 Morley Drive Clinton Township, MI 48036</div> <p>12P RECEPTACLE, FLANGE MOUNT, END CAP</p> | | | | | | | | | | | | | | |
| PROCESS SPECIFICATIONS: | | <table><tr><th>SIZE</th><th>TYPE</th><th>DWG NO:</th><th>REVISION</th></tr><tr><td>B</td><td>C-</td><td>AT04-12PX-LE07</td><td>A1</td></tr></table> | | | SIZE | TYPE | DWG NO: | REVISION | B | C- | AT04-12PX-LE07 | A1 | | | | |
| SIZE | TYPE | DWG NO: | REVISION | | | | | | | | | | | | | |
| B | C- | AT04-12PX-LE07 | A1 | | | | | | | | | | | | | |
| NEXT ASSY: | | <table><tr><td>SCALE: NONE</td><td>SHEET 3</td><td>OF 3</td></tr></table> | | | SCALE: NONE | SHEET 3 | OF 3 | | | | | | | | | |
| SCALE: NONE | SHEET 3 | OF 3 | | | | | | | | | | | | | | |

TITLE: 12P RECEPTACLE, FLANGE MOUNT, END CAP DWG NO: AT04-12PX-LE07 REV: A1 SH: 3 OF: 3

Mouser Electronics

Authorized Distributor

Click to View Pricing, Inventory, Delivery & Lifecycle Information:

[Amphenol:](#)

[AT04-12PD-LE07](#)