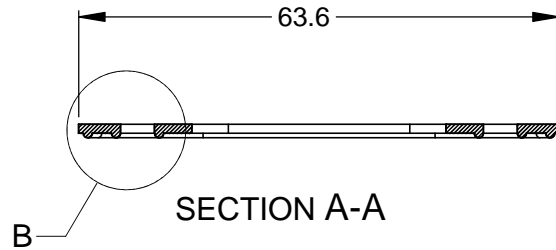


## REVISIONS

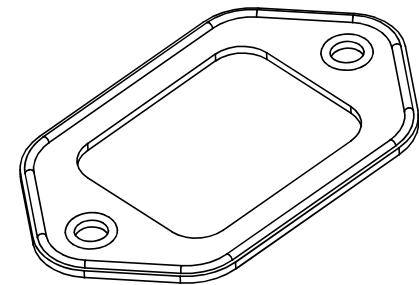
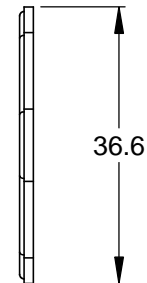
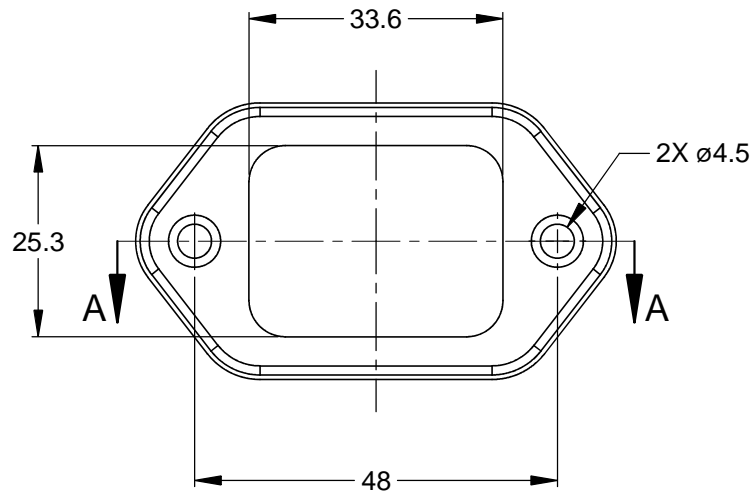
REV	ECO	DESCRIPTION	DATE	BY	APPR
A3		RELEASE NEW DWG FORMAT	09/03/13	DRP	



1.2 TYP.

DETAIL B  
SCALE 4:1

R0.6 TYP.



## NOTES: UNLESS OTHERWISE SPECIFIED

1. MATERIAL: SILICONE RUBBER; COLOR: RED
2. RoHS COMPLIANT
3. ALL DIMENSIONS ARE FOR REFERENCE USE ONLY.

	AT04-08PB-G7		
	PART NUMBER	DESCRIPTION	
QUANTITY	ITEM		
MATERIALS LIST			
UNLESS OTHERWISE SPECIFIED		SIGNATURES	DATE
1) All dimensions are in metric(mm).		DRAWN:	D.PARKS
2) Tolerances are as follows:		CHECKED:	09/03/13
1 PL DEC ±0.30		ENGINEER:	
2 PL DEC ±0.15		APPROVAL:	
3 PL DEC ±0.08		CUSTOMER:	
3) Note reference =		THIS DRAWING IS SUPPLIED FOR INFORMATION ONLY. DESIGN FEATURES, SPECIFICATIONS AND PERFORMANCE DATA SHOWN HEREON ARE THE PROPERTY OF THE AMPHENOL CORPORATION. NO RIGHTS OF REPRODUCTION ARE IMPLIED. ALL DIMENSIONS ARE SUBJECT TO NORMAL MANUFACTURING VARIATIONS.	
MATERIAL SPECIFICATIONS:		SIZE	
PROCESS SPECIFICATIONS:		TYPE	
NEXT ASSY:		DWG NO:	
		REVISION	
		SCALE: NONE	
		SHEET 1 OF 1	

**Amphenol**Sine Systems - www.amphenol-sine.com  
44724 Morley Drive  
Clinton Township, MI 48036RECEPTACLE GASKET,  
8 POSITION, AT SERIES

AT04-08PB-G7

A3

# Mouser Electronics

Authorized Distributor

Click to View Pricing, Inventory, Delivery & Lifecycle Information:

[Amphenol:](#)

[AT04-08PB-G7](#)