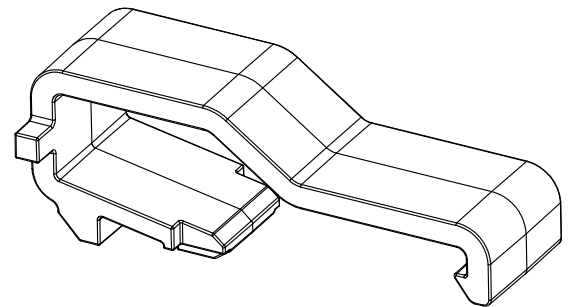
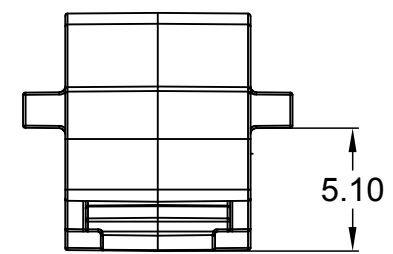
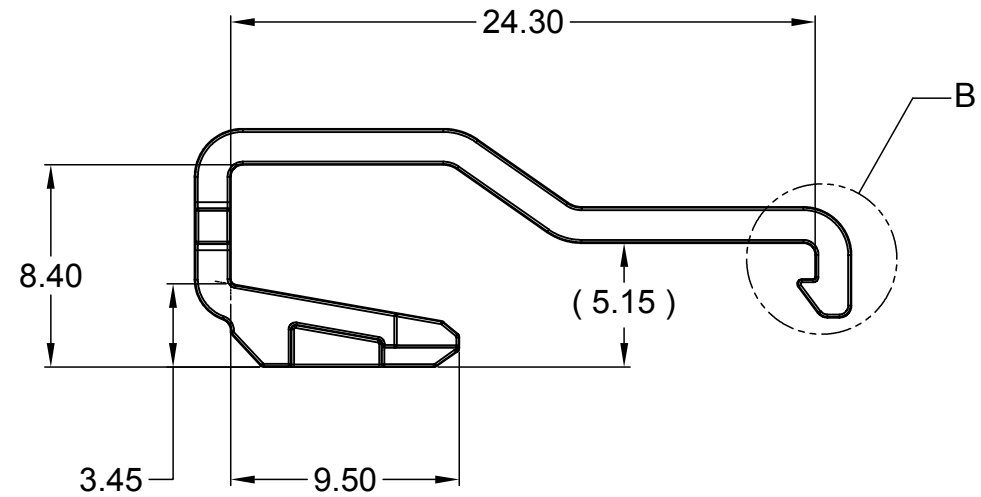
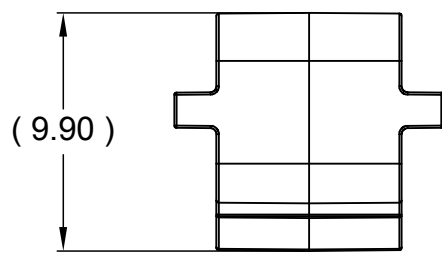
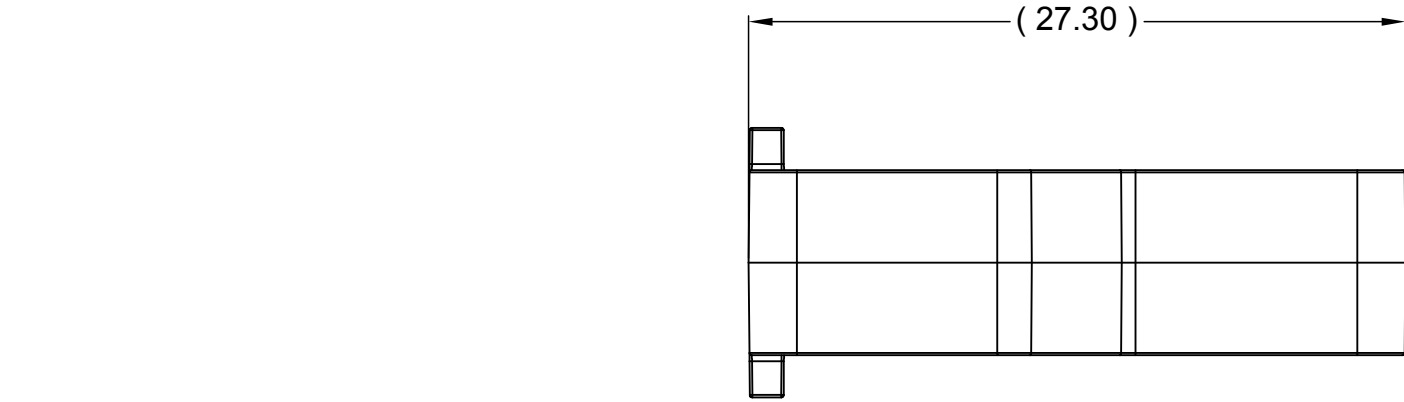
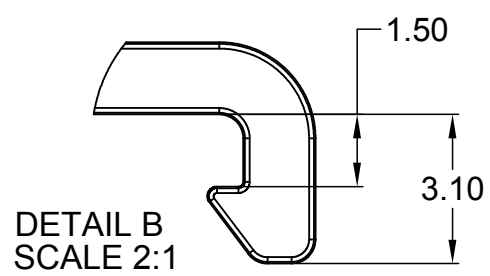
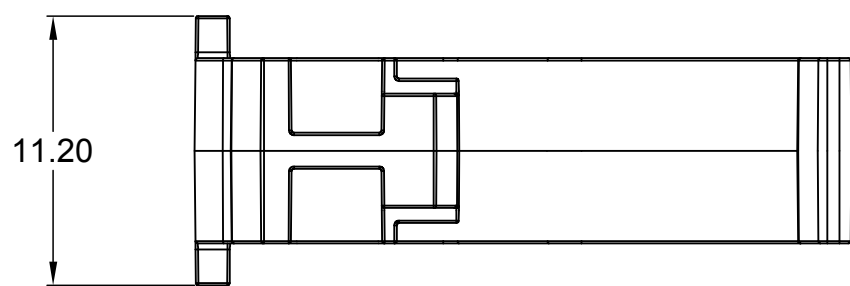


REVISIONS					
REV	ECO	DESCRIPTION	DATE	BY	APPR
A1	-	RELEASED CUSTOMER DRAWING	11NOV14	D.PARKS	-



ISOMETRIC VIEW



NOTES: UNLESS OTHERWISE SPECIFIED

1. MATERIAL:  
THERMOPLASTIC; COLOR: RED
2. FOR USE WITH "AT" SERIES, 2, 4, & 6 WAY, FULLY  
MATED PLUG & RECEPTACLE SET.
3. ALL DIMENSIONS ARE FOR REFERENCE USE ONLY.

		AT-246CPA-RD				
		PART NUMBER		DESCRIPTION		
ITEM						
QUANTITY		MATERIALS LIST				
<div>UNLESS OTHERWISE SPECIFIED</div> <div>1) All dimensions are in metric(mm).</div> <div>2) Tolerances are as follows:</div> <div>1 PL DEC ±1.27</div> <div>2 PL DEC ±0.25</div> <div>3 PL DEC ±0.127</div> <div>Fractions ±0.40</div> <div>Angles ±1°</div> <div>3) Note reference = </div>		SIGNATURES		DATE		
		DRAWN: D.PARKS		11NOV14		
		CHECKED:				
		ENGINEER:				
		APPROVAL:				
MATERIAL SPECIFICATIONS:		CUSTOMER:		<div>Amphenol</div> <div>Sine Systems - <a href="http://www.amphenol-sine.com">www.amphenol-sine.com</a></div> <div>44724 Morley Drive</div> <div>Clinton Township, MI 48036</div>		
SEE NOTES						
PROCESS SPECIFICATIONS:		THIS DRAWING IS SUPPLIED FOR INFORMATION ONLY. DESIGN FEATURES, SPECIFICATIONS AND PERFORMANCE DATA SHOWN HEREON ARE THE PROPERTY OF THE AMPHENOL CORPORATION. NO RIGHTS OF REPRODUCTION ARE IMPLIED. ALL DIMENSIONS ARE SUBJECT TO NORMAL MANUFACTURING VARIATIONS.				
NEXT ASSY:		SIZE		TYPE	DWG NO:	REVISION
		B		C-	AT-246CPA-RD	A1
		SCALE:		NONE		SHEET 1 OF 1

# Mouser Electronics

Authorized Distributor

Click to View Pricing, Inventory, Delivery & Lifecycle Information:

[Amphenol:](#)

[AT-246CPA-RD](#)