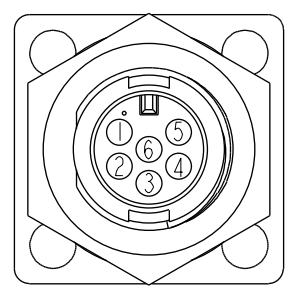
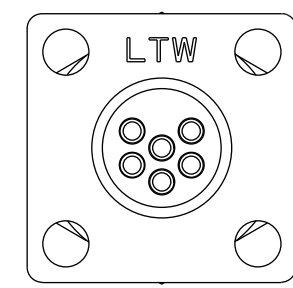
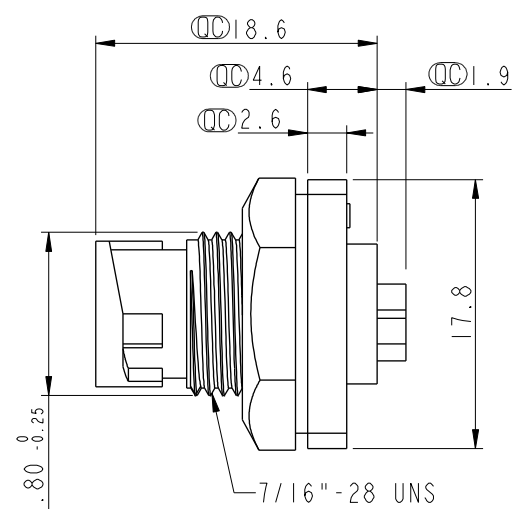
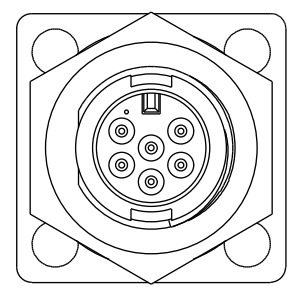
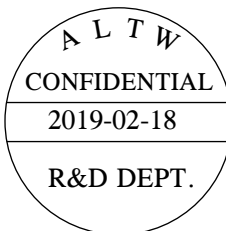
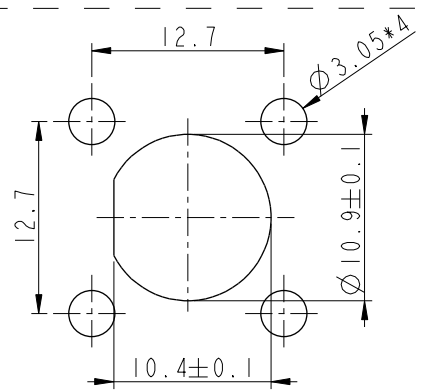


THIS DOCUMENT IS SUBJECT TO CHANGE WITHOUT NOTICE. IT IS CONFIDENTIAL AND A PROPERTY OF Amphenol LTW. DISCLOSURE TO THIRD PARTY HAS TO BE AUTHORIZED BY Amphenol LTW.

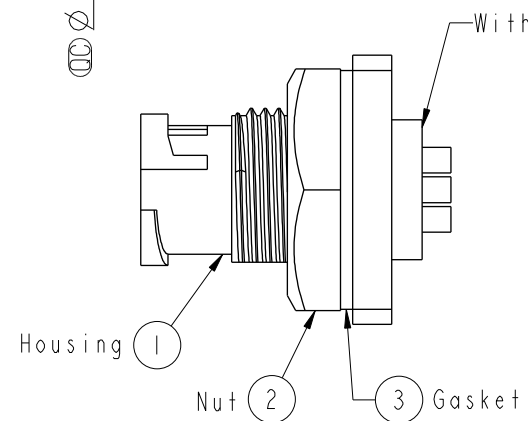
REV.	ECN NO.	DATE	SIGN	DESCRIPTION
B	C190268	2019/02/18	Ruru	Modify Note



Pin Assignments  
Front View



Recommended Panel Cut-Out



Note:

- \* Important Dimension.
- \* Waterproof Rate: IP67, Unmated
- \* Housing: Thermoplastic, Black
- \* Pin: Copper Alloy, Gold Plated
- \* Shield: Metal, Nickel Plated
- \* Nut: Metal, Nickel Plated
- \* Gasket: Rubber, Black
- \* Use with waterproof cap or dust cap  
Panel Thickness Max. 2.5mm.
- \* Use without waterproof cap or dust cap  
Panel Thickness Max. 3.5mm.
- \* Gasket and Nut are packed separately  
in PE bags.

UNIT:mm				TITLE Mini Panel Lock 6Pin M Conn. M Pin		ITEM NO ASU-06PMMS-LS7002	DRAWN BY Ruru	DATE 2019-02-18
TOLERANCE .X ±0.25 .XX ±0.1 .XXX ±0.05 ANGLES ±1°		SCALE 2:1	SIZE A4	SHEET 1	OF 1	DWG NO ASU-06PMMS-LS7002	CHECKED BY Rita	DATE 2019-02-18
REV. B		WC-REV. A.1	Inspection item		CUSTOMER ALTW		APPROVED BY Max	DATE 2019-02-18

Amphenol LTW  
安費諾亮泰企業股份有限公司

# Mouser Electronics

Authorized Distributor

Click to View Pricing, Inventory, Delivery & Lifecycle Information:

[Amphenol:](#)

[ASU-06PMMS-LS7002](#)