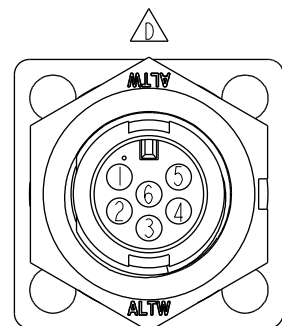
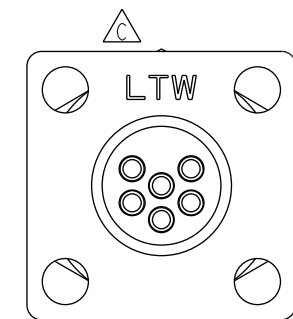
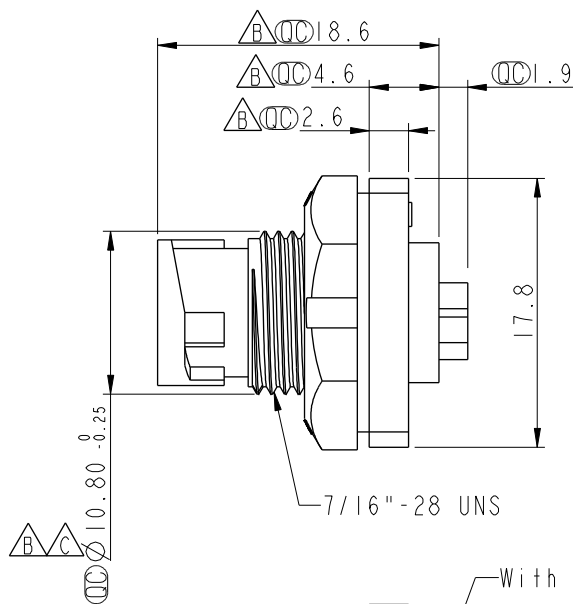
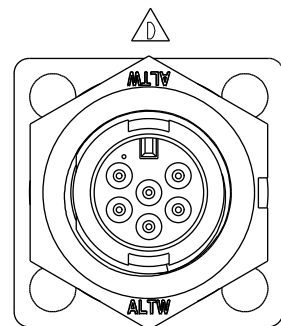


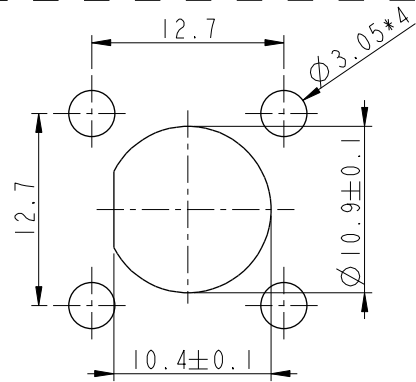
THIS DOCUMENT IS SUBJECT TO CHANGE WITHOUT NOTICE. IT IS CONFIDENTIAL AND A PROPERTY OF Amphenol LTW. DISCLOSURE TO THIRD PARTY HAS TO BE AUTHORIZED BY Amphenol LTW.

REV.	ECN NO.	DATE	SIGN	DESCRIPTION
C	LEN-9C0094	2009/12/16	Vicky	REF. TO ECR/N. NOTE.
D	LEN1741236	2017/04/13	Ruru	Change Logo
E	CI90268	2019/02/18	Ruru	Modify Note

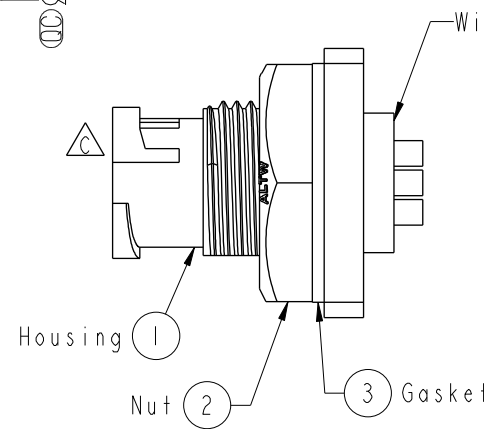
ALTW  
CONFIDENTIAL  
2019-02-18  
R&D DEPT.



Pin Assignments  
Front View



Recommended Panel Cut-Out



- Note:
- \* Important Dimension.
  - \* Waterproof Rate: IP67, Unmated
  - \* Housing: Thermoplastic, Black
  - \* Pin: Copper Alloy, Gold Plated
  - \* Shield: Metal, Nickel Plated
  - \* Nut: Thermoplastic, Black
  - \* Gasket: Rubber, Black
  - \* Use with waterproof cap or dust cap  
Panel Thickness Max. 2.5mm.
  - \* Use without waterproof cap or dust cap  
Panel Thickness Max. 3.5mm.
  - \* Gasket and Nut are packed separately in PE bags.

UNIT:mm		TITLE Mini Panel Lock 6Pin M Conn. M Pin		ITEM NO ASU-06PMMS-LS7001		DRAWN BY Ruru		DATE 2019-02-18	
TOLERANCE .X ±0.25 .XX ±0.1 .XXX ±0.05 ANGLES ±1°		SCALE 2:1	SIZE A4	SHEET 1 OF 1	DWG NO ASU-06PMMS-LS7001	CHECKED BY Rita		DATE 2019-02-18	
REV. E		WC-REV. A.2		CUSTOMER ALTW		APPROVED BY Max		DATE 2019-02-18	

Amphenol LTW  
安費諾亮泰企業股份有限公司

QC: Inspection item

# Mouser Electronics

Authorized Distributor

Click to View Pricing, Inventory, Delivery & Lifecycle Information:

[Amphenol:](#)

[ASU-06PMMS-LS7001](#)