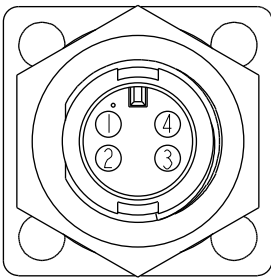
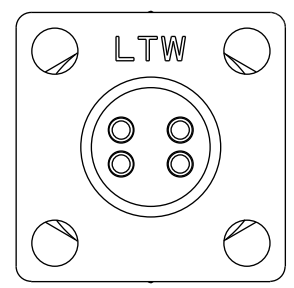
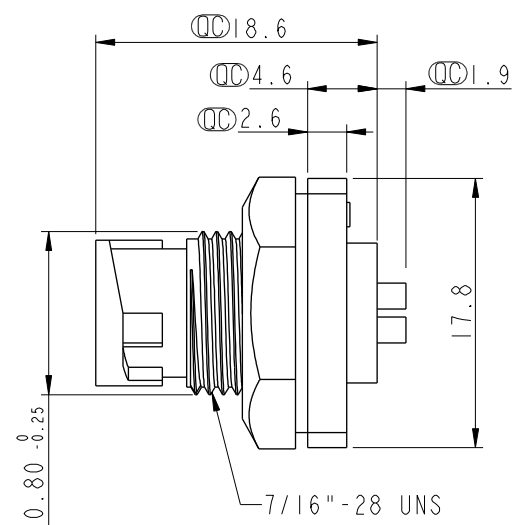
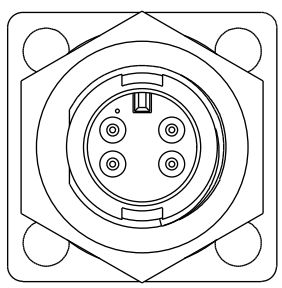
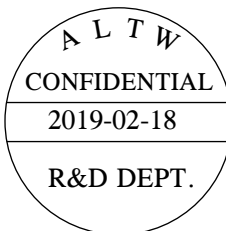
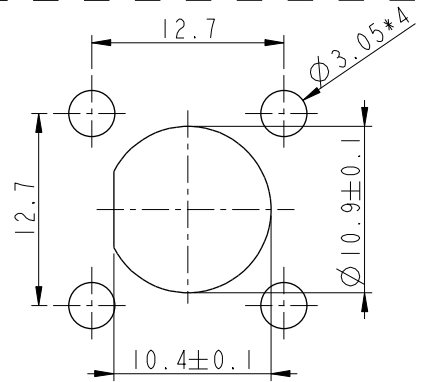


THIS DOCUMENT IS SUBJECT TO CHANGE WITHOUT NOTICE. IT IS CONFIDENTIAL AND A PROPERTY OF Amphenol LTW. DISCLOSURE TO THIRD PARTY HAS TO BE AUTHORIZED BY Amphenol LTW.

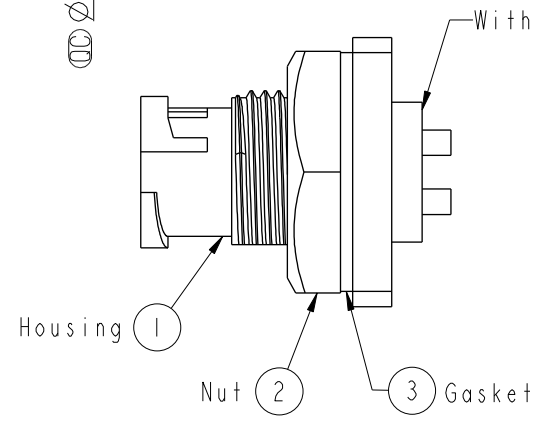
REV.	ECN NO.	DATE	SIGN	DESCRIPTION
B	C190268	2019/02/18	Ruru	Modify Note



Pin Assignments
Front View



Recommended Panel Cut-Out



Note:

- * Important Dimension.
- * Waterproof Rate: IP67, Unmated
- * Housing: Thermoplastic, Black
- * Pin: Copper Alloy, Gold Plated
- * Shield: Metal, Nickel Plated
- * Nut: Metal, Nickel Plated
- * Gasket: Rubber, Black
- * Use with waterproof cap or dust cap
Panel Thickness Max. 2.5mm.
- * Use without waterproof cap or dust cap
Panel Thickness Max. 3.5mm.
- * Gasket and Nut are packed separately
in PE bags.

UNIT:mm				TITLE Mini Panel Lock 4Pin M Conn. M Pin		ITEM NO ASU-04PMMS-LS7002		DRAWN BY Ruru		DATE 2019-02-18	
TOLERANCE		.X ±0.25		SCALE 2:1		DWG NO ASU-04PMMS-LS7002		CHECKED BY Rita		DATE 2019-02-18	
.XX ±0.1		SIZE A4		REV. B		CUSTOMER ALTW		APPROVED BY Max		DATE 2019-02-18	
.XXX ±0.05		WC-REV. A.1		SHEET 1 OF 1							
ANGLES ±1°		QC: Inspection item									

Amphenol LTW
安費諾亮泰企業股份有限公司

Mouser Electronics

Authorized Distributor

Click to View Pricing, Inventory, Delivery & Lifecycle Information:

[Amphenol:](#)

[ASU-04PMMS-LS7002](#)