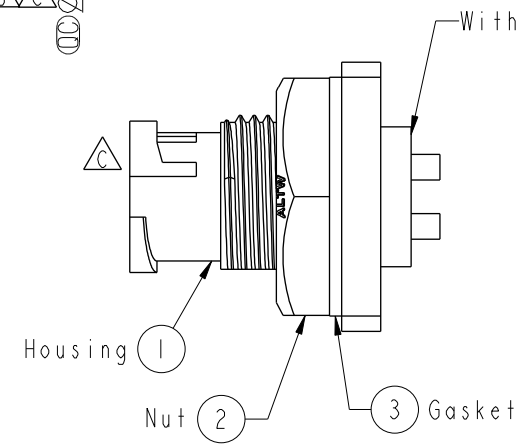
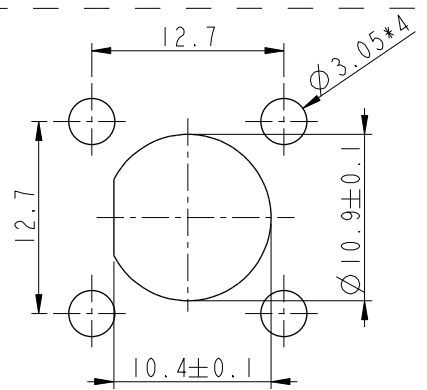
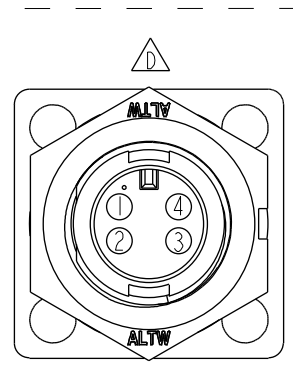
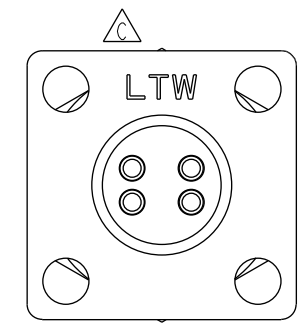
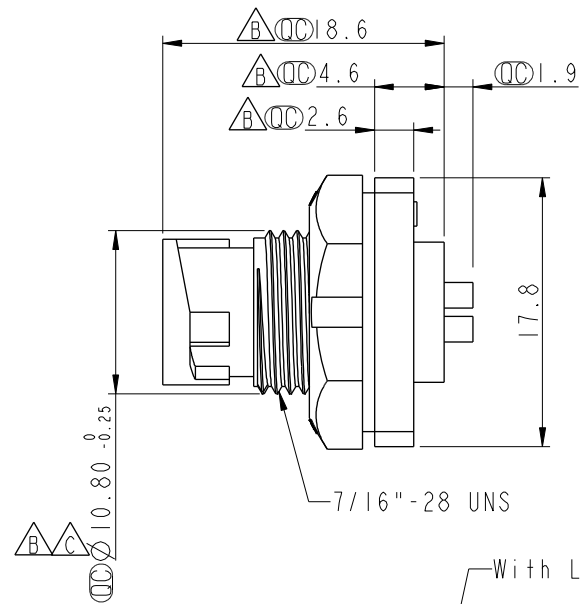
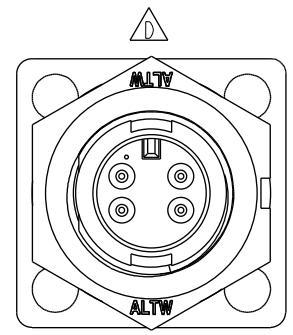


THIS DOCUMENT IS SUBJECT TO CHANGE WITHOUT NOTICE. IT IS CONFIDENTIAL AND A PROPERTY OF Amphenol LTW. DISCLOSURE TO THIRD PARTY HAS TO BE AUTHORIZED BY Amphenol LTW.

REV.	ECN NO.	DATE	SIGN	DESCRIPTION
C	LEN-9C0092	2009/12/16	Vicky	REF. TO ECR/N. NOTE.
D	LEN1741234	2017/04/13	Ruru	Change Logo
E	CI90268	2019/02/18	Ruru	Modify Note



- Note:
- \* Important Dimension.
  - \* Waterproof Rate: IP67, Unmated
  - \* Housing: Thermoplastic, Black
  - \* Pin: Copper Alloy, Gold Plated
  - \* Shield: Metal, Nickel Plated
  - \* Nut: Thermoplastic, Black
  - \* Gasket: Rubber, Black
- \* Use with waterproof cap or dust cap  
Panel Thickness Max. 2.5mm.
- \* Use without waterproof cap or dust cap  
Panel Thickness Max. 3.5mm.
- \* Gasket and Nut are packed separately in PE bags.

UNIT:mm		TOLERANCE		TITLE		ITEM NO		DRAWN BY		DATE	
.X ±0.25		.XX ±0.1		Mini		ASU-04PMMS-LS7001		Ruru		2019-02-18	
.XXX ±0.05		ANGLES ±1°		Panel Lock 4Pin M Conn. M Pin		DWG NO		CHECKED BY		DATE	
				SCALE 2:1		ASU-04PMMS-LS7001		Rita		2019-02-18	
				REV. E		CUSTOMER		APPROVED BY		DATE	
				WC-REV. A.2		ALTW		Max		2019-02-18	
				Inspection item							

Amphenol LTW  
安費諾亮泰企業股份有限公司

# Mouser Electronics

Authorized Distributor

Click to View Pricing, Inventory, Delivery & Lifecycle Information:

[Amphenol:](#)

[ASU-04PMMS-LS7001](#)