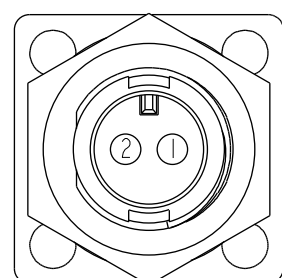
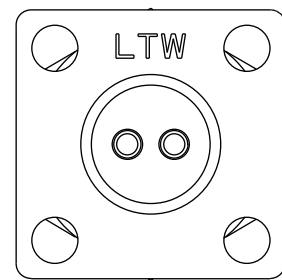
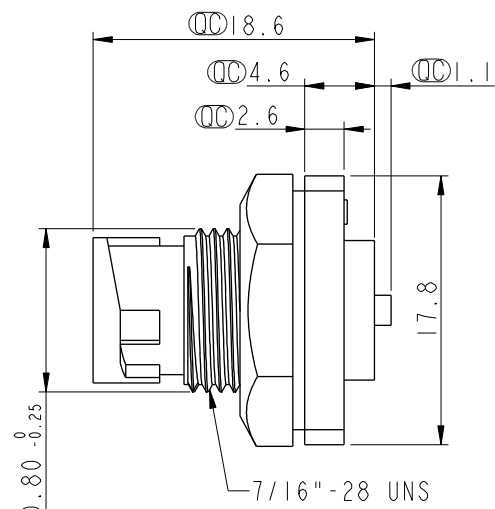
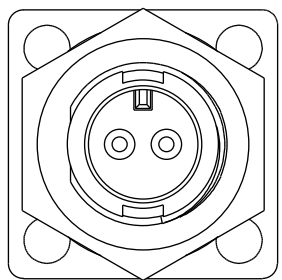


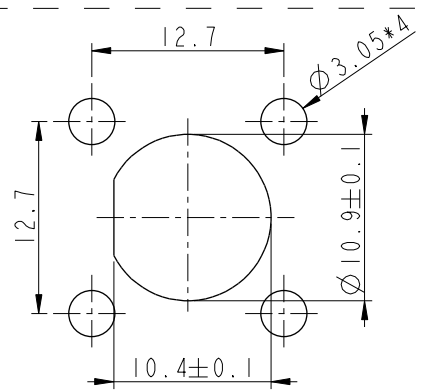
THIS DOCUMENT IS SUBJECT TO CHANGE WITHOUT NOTICE. IT IS CONFIDENTIAL AND A PROPERTY OF Amphenol LTW. DISCLOSURE TO THIRD PARTY HAS TO BE AUTHORIZED BY Amphenol LTW.

REV.	ECN NO.	DATE	SIGN	DESCRIPTION
B	C190268	2019/03/05	Ruru	Modify Note

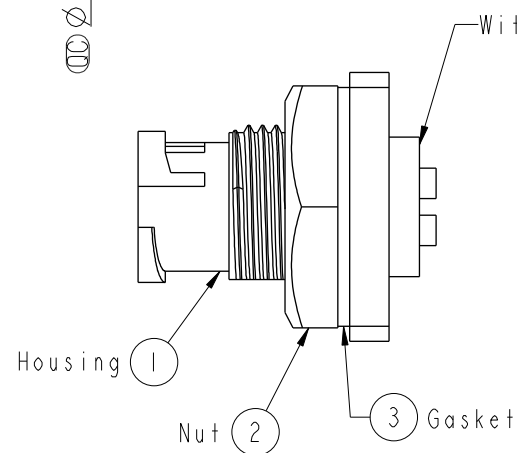
ALTW  
CONFIDENTIAL  
2019-03-05  
R&D DEPT.



Pin Assignments  
Front View



Recommended Panel Cut-Out



Note:

- \* Important Dimension.
- \* Waterproof Rate: IP67, Unmated
- \* Housing: Thermoplastic, Black
- \* Pin: Copper Alloy, Gold Plated
- \* Shield: Metal, Nickel Plated
- \* Nut: Metal, Nickel Plated
- \* Gasket: Rubber, Black
- \* Use with waterproof cap or dust cap  
Panel Thickness Max. 2.5mm.
- \* Use without waterproof cap or dust cap  
Panel Thickness Max. 3.5mm.
- \* Gasket and Nut are packed separately  
in PE bags.

UNIT:mm		TITLE Mini Panel Lock 2Pin M Conn. M Pin		ITEM NO ASD-02PMMS-LS7002		DRAWN BY Ruru		DATE 2019-03-05	
TOLERANCE .X ±0.25 .XX ±0.1 .XXX ±0.05 ANGLES ±1°		SCALE 2:1	SIZE A4	SHEET 1 OF 1	DWG NO ASD-02PMMS-LS7002	CHECKED BY Rita		DATE 2019-03-05	
REV. B		WC-REV. A.1	Inspection item		CUSTOMER ALTW	APPROVED BY Max		DATE 2019-03-05	

Amphenol LTW  
安費諾亮泰企業股份有限公司

# Mouser Electronics

Authorized Distributor

Click to View Pricing, Inventory, Delivery & Lifecycle Information:

[Amphenol:](#)

[ASD-02PMMS-LS7002](#)