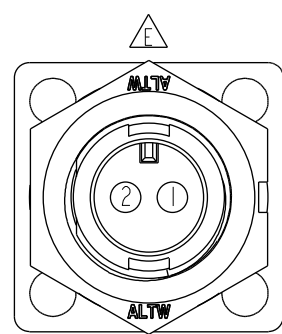
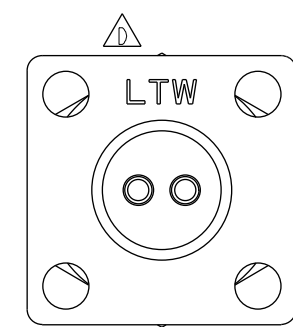
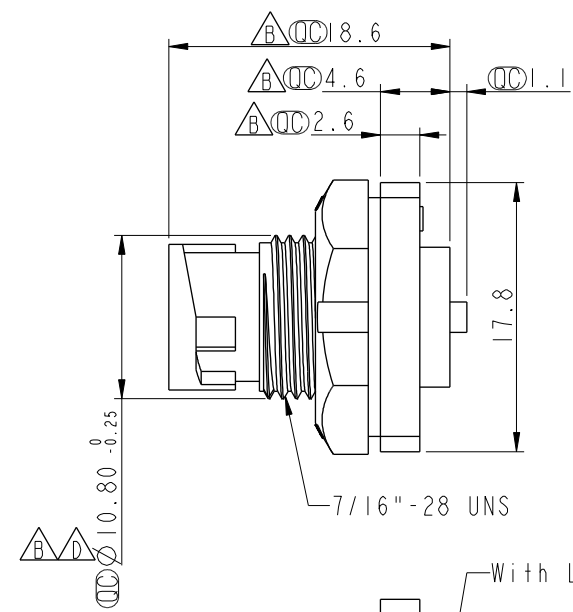
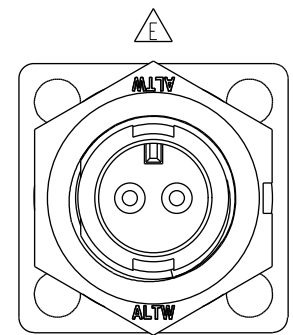
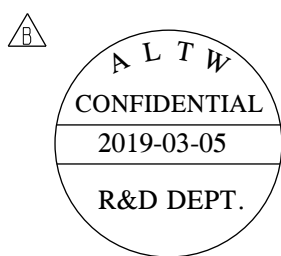
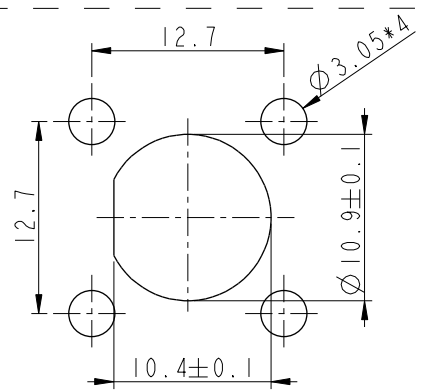


THIS DOCUMENT IS SUBJECT TO CHANGE WITHOUT NOTICE. IT IS CONFIDENTIAL AND A PROPERTY OF Amphenol LTW. DISCLOSURE TO THIRD PARTY HAS TO BE AUTHORIZED BY Amphenol LTW.

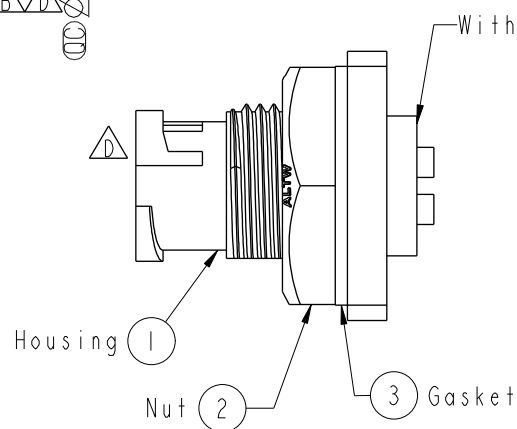
REV.	ECN NO.	DATE	SIGN	DESCRIPTION
D	LEN-9C0089	2009/12/14	Vicky	REF. TO ECR/N. NOTE.
E	LEN1741231	2017/04/13	Ruru	Change Logo
F	CI90268	2019/03/05	Ruru	Modify Note



Pin Assignments  
Front View



Recommended Panel Cut-Out



- Note:
- \* Important Dimension.
  - \* Waterproof Rate: IP67, Unmated
  - \* Housing: Thermoplastic, Black
  - \* Pin: Copper Alloy, Gold Plated
  - \* Shield: Metal, Nickel Plated
  - \* Nut: Thermoplastic, Black
  - \* Gasket: Rubber, Black
  - \* Use with waterproof cap or dust cap  
Panel Thickness Max. 2.5mm.
  - \* Use without waterproof cap or dust cap  
Panel Thickness Max. 3.5mm.
  - \* Gasket and Nut are packed separately in PE bags.

UNIT:mm		TITLE Mini Panel Lock 2Pin M Conn. M Pin		ITEM NO ASD-02PMMS-LS7001		DRAWN BY Ruru		DATE 2019-03-05	
TOLERANCE .X ±0.25 .XX ±0.1 .XXX ±0.05 ANGLES ±1°		SCALE 2:1	SIZE A4	SHEET 1 OF 1	DWG NO ASD-02PMMS-LS7001	CHECKED BY Rita		DATE 2019-03-05	
REV. F		WC-REV. A.2	Inspection item		CUSTOMER ALTW	APPROVED BY Max		DATE 2019-03-05	

Amphenol LTW  
安費諾亮泰企業股份有限公司

# Mouser Electronics

Authorized Distributor

Click to View Pricing, Inventory, Delivery & Lifecycle Information:

[Amphenol:](#)

[ASD-02PMMS-LS7001](#)