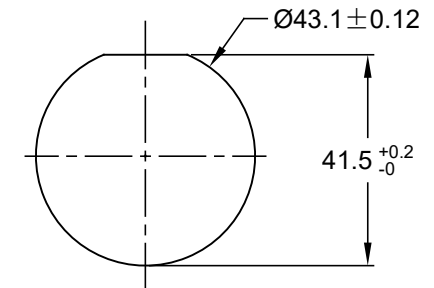
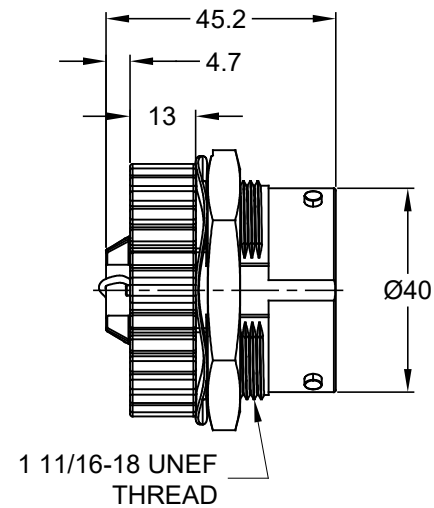
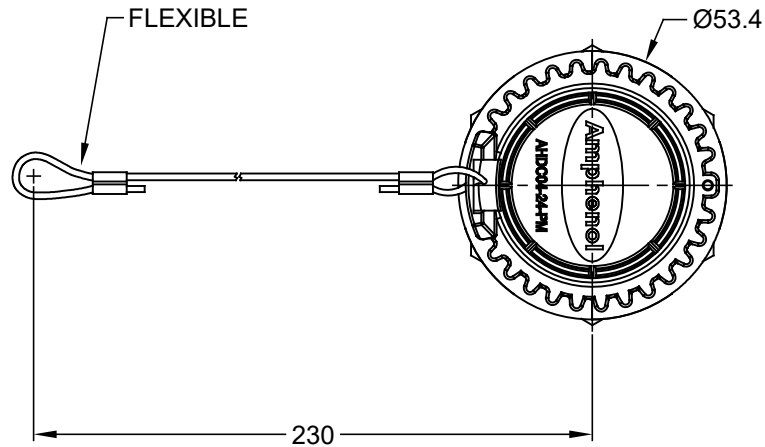


REVISIONS

REV	ECO	DESCRIPTION	DATE	BY	APPR
01		PRELIMINARY DRAWING	15AUG17	SULLENTOMMY	



RECOMMENDED PANEL
MOUNTING HOLE
RECOMMENDED PANEL
THICKNESS:1.6 TO 4.7MM

NOTES: UNLESS OTHERWISE SPECIFIED

1. MATERIAL:
SHELL: THERMOPLASTIC
NUT: THERMOPLASTIC
SEAL: SILICONE RUBBER
CORD: NYLON
LOCK WASHER: STEEL

2. COLORS: BLACK

3. RoHS COMPLIANT

4. COMPATIBLE WITH ALL SIZE 24 AHDP SERIES PLUG.

5. ALL DIMENSIONS ARE FOR REFERENCE USE ONLY.

		AHDC04-24-PMT			
		PART NUMBER		DESCRIPTION	
ITEM					
QUANTITY		MATERIALS LIST			
<div>UNLESS OTHERWISE SPECIFIED</div> <div>1) All dimensions are in metric(mm).</div> <div>2) Tolerances are as follows:</div> <div>1 PL DEC ±0.30</div> <div>2 PL DEC ±0.15</div> <div>3 PL DEC ±0.08</div> <div>Fractions ±1/64</div> <div>Angles ±1°</div> <div>3) Note reference = </div>		<div>SIGNATURES</div> <div>DRAWN: SULEN.ZHANG</div> <div>CHECKED: ORION.LI</div> <div>ENGINEER:</div> <div>APPROVAL: TOMMY.XIE</div> <div>CUSTOMER:</div>		<div>DATE</div> <div>15AUG17</div> <div>15AUG17</div> <div></div> <div>15AUG17</div>	
MATERIAL SPECIFICATIONS:		<div>Amphenol</div> <div>Sine Systems - www.amphenol-sine.com</div> <div>44724 Morley Drive</div> <div>Clinton Township, MI 48036</div>			
PROCESS SPECIFICATIONS:		<div>PROTECTIVE CAP FOR PLUGS,</div> <div>WITH CORD,AHDP SERIES,SIZE 24</div>			
NEXT ASSY:		SIZE		TYPE	
		A		C-	
		SCALE		NONE	
		DWG NO:		AHDC04-24-PMT	
		REVISION		01	
		SHEET		1 OF 1	

Amphenol

Sine Systems - www.amphenol-sine.com
44724 Morley Drive
Clinton Township, MI 48036

PROTECTIVE CAP FOR PLUGS,
WITH CORD,AHDP SERIES,SIZE 24

Mouser Electronics

Authorized Distributor

Click to View Pricing, Inventory, Delivery & Lifecycle Information:

[Amphenol:](#)

[AHDC04-24-PMT](#)