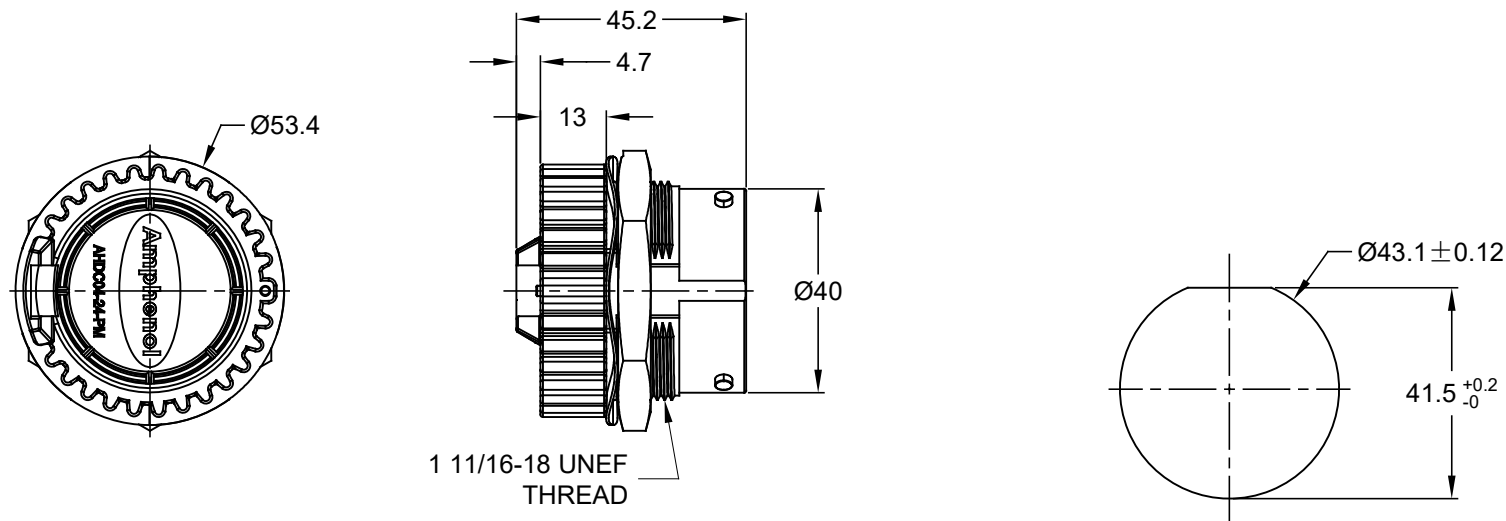


REVISIONS					
REV	ECO	DESCRIPTION	DATE	BY	APPR
01		PRELIMINARY DRAWING	08NOV16	SULLENTOMMY	
02		DESIGN CHANGE	16MAY17	SULLENTOMMY	
03		CHANGE P/N TO AHDC04-24-PM	01JUN17	SULLENTOMMY	
04		REMOVE CORD	15AUG17	SULLENTOMMY	



RECOMMENDED PANEL
MOUNTING HOLE
RECOMMENDED PANEL
THICKNESS:1.6 TO 4.7MM

NOTES: UNLESS OTHERWISE SPECIFIED

- MATERIAL:
SHELL: THERMOPLASTIC
NUT: THERMOPLASTIC
SEAL: SILICONE RUBBER
LOCK WASHER: STEEL
- COLORS: BLACK
- RoHS COMPLIANT
- COMPATIBLE WITH ALL SIZE 24 AHDP SERIES PLUG.
- ALL DIMENSIONS ARE FOR REFERENCE USE ONLY.

AHDC04-24-PM			
PART NUMBER		DESCRIPTION	
QUANTITY		ITEM	
MATERIALS LIST			
<div>UNLESS OTHERWISE SPECIFIED</div> <div>1) All dimensions are in metric(mm).</div> <div>2) Tolerances are as follows:</div> <div>1 PL DEC ±0.30</div> <div>2 PL DEC ±0.15</div> <div>3 PL DEC ±0.08</div> <div>Fractions ±1/64</div> <div>Angles ±1°</div> <div>3) Note reference = <div><div>X</div></div></div>		<div>SIGNATURES</div> <div>DATE</div> <div>DRAWN: SULLEN.ZHANG</div> <div>01JUN17</div> <div>CHECKED: ORION.LI</div> <div>01JUN17</div> <div>ENGINEER:</div> <div>APPROVAL: TOMMY.XIE</div> <div>01JUN17</div> <div>CUSTOMER:</div> <div>THIS DRAWING IS SUPPLIED FOR INFORMATION ONLY. DESIGN FEATURES, SPECIFICATIONS AND PERFORMANCE DATA SHOWN HEREON ARE THE PROPERTY OF THE AMPHENOL CORPORATION. NO RIGHTS OF REPRODUCTION ARE IMPLIED. ALL DIMENSIONS ARE SUBJECT TO NORMAL MANUFACTURING VARIATIONS.</div>	
<div>MATERIAL SPECIFICATIONS:</div>		<div>Amphenol</div> <div>Sine Systems - www.amphenol-sine.com</div> <div>44724 Morley Drive</div> <div>Clinton Township, MI 48036</div>	
<div>PROCESS SPECIFICATIONS:</div>		<div>PROTECTIVE CAP FOR PLUGS,</div> <div>AHDP SERIES,SIZE 24</div>	
<div>NEXT ASSY:</div>		<div>SIZE</div> <div>A</div>	<div>TYPE</div> <div>C-</div>
		<div>DWG NO:</div> <div>AHDC04-24-PM</div>	<div>REVISION</div> <div>04</div>
		<div>SCALE:</div> <div>NONE</div>	<div>SHEET</div> <div>1</div> <div>OF</div> <div>1</div>

Mouser Electronics

Authorized Distributor

Click to View Pricing, Inventory, Delivery & Lifecycle Information:

[Amphenol:](#)

[AHDC04-24-PM](#)