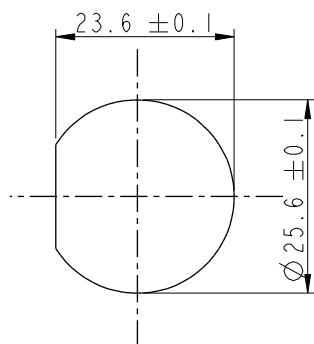
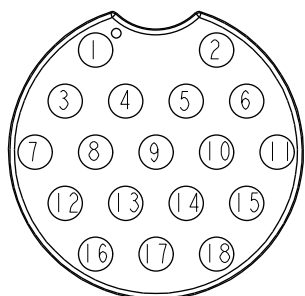
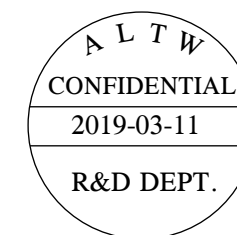
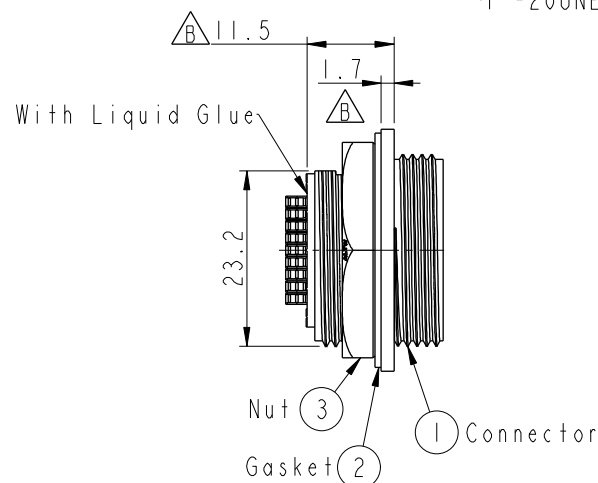
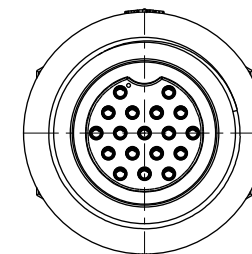
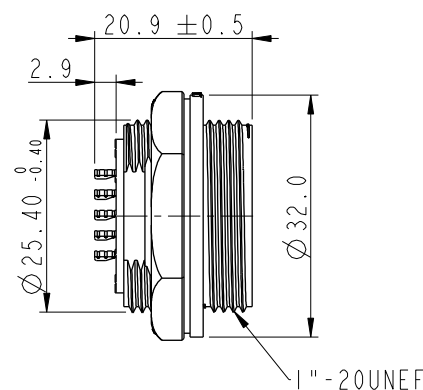
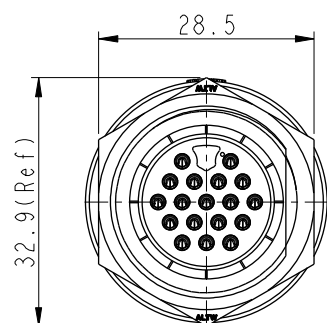


REV.	ECN NO.	DATE	SIGN	DESCRIPTION
B	LEN1830056	2018/02/26	Lingpeng	Change The Design
C	C190347	2019/03/11	Vicky	Change Note



Recommended Panel  
Cut-Out



Pin Assignments  
Front View

- Note:**
- \* **Important Dimension To Check.**
  - \* Waterproof Rate: IP67, Unmated.
  - \* Housing: Thermoplastic, Black.
  - \* Pin: Copper Alloy, Gold Plated.
  - \* Nut: Thermoplastic, Black.
  - \* Gasket: Rubber, Gray.
  - \* Maximum Panel Thickness: 3.0mm
  - \* Gasket and Nut are packed separately in PE bags. (Gasket/Nut不組裝, 散裝出貨)

UNIT:mm

TOLERANCE  $\pm 0.5\text{mm}$

TITLE LARGE PANEL SCREW 18P M CONN F PIN			
SCALE 1:1	SIZE A4	SHEET 1 OF 1	
REV. C	WC-REV. A.1	QC: Inspection item	

**Amphenol LTW**  
安費諾亮泰企業股份有限公司

ITEM NO ADD-18RMFS-SC7001	DRAWN BY Vicky	DATE 2019-03-11
DWG NO ADD-18RMFS-SC7001	CHECKED BY Rita	DATE 2019-03-11
CUSTOMER ALTW	APPROVED BY Max	DATE 2019-03-11

# Mouser Electronics

Authorized Distributor

Click to View Pricing, Inventory, Delivery & Lifecycle Information:

[Amphenol:](#)

[ADD-18RMFS-SC7001](#)