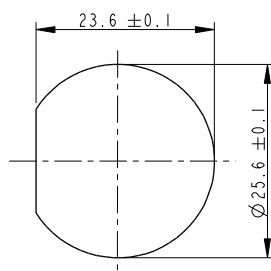
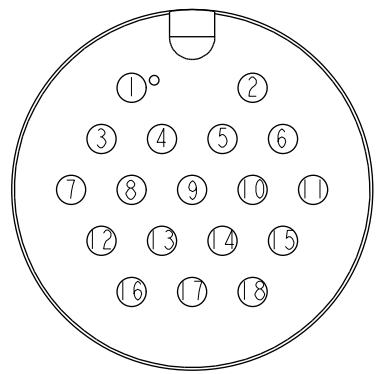
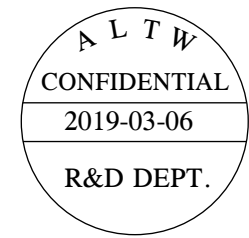
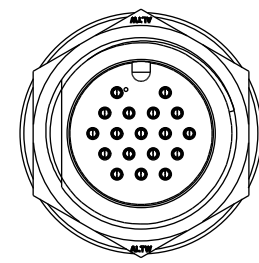
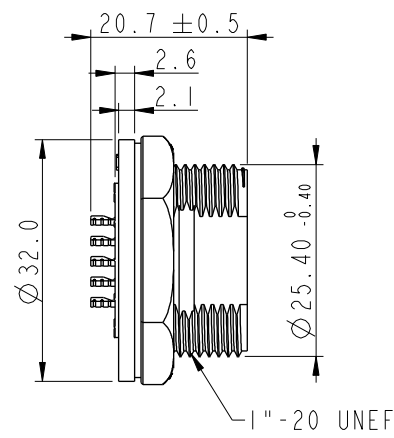
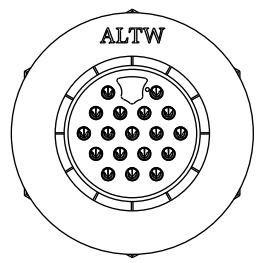


THIS DOCUMENT IS SUBJECT TO CHANGE WITHOUT NOTICE. IT IS CONFIDENTIAL AND A PROPERTY OF Amphenol LTW. DISCLOSURE TO THIRD PARTY HAS TO BE AUTHORIZED BY Amphenol LTW.

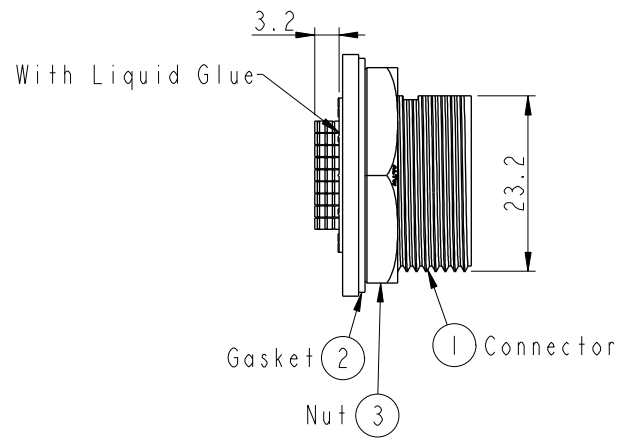
REV.	ECN NO.	DATE	SIGN	DESCRIPTION
B	C190347	2019/03/06	Vicky	Change Note



Recommended Panel  
Cut-Out



Pin Assignments  
Front View



- Note:
- \* (QC) Important Dimension To Check.
  - \* Waterproof Rate: IP67, Unmated.
  - \* Housing: Thermoplastic, Black.
  - \* Pin: Copper Alloy, Gold Plated.
  - \* Gasket: Rubber, Gray.
  - \* Nut: Thermoplastic, Black.
  - \* Use with waterproof cap or dust cap  
Maximum Panel Thickness: 1.8mm
  - \* Use without waterproof cap or dust cap  
Maximum Panel Thickness: 3.0mm
  - \* Gasket and Nut are packed separately  
in PE bags. (Gasket/Nut不組裝, 散裝出貨)

UNIT:mm		TOLERANCE		TITLE		ITEM NO		DRAWN BY		DATE	
.X ±0.25		.XX ±0.1		LARGE		ADD-I8PMMS-SC7001		Vicky		2019-03-06	
.XXX ±0.05		ANGLES ±1°		PANEL SCREW 18PIN M CONN M PIN		DWG NO		CHECKED BY		DATE	
				SCALE 2:1		ADD-I8PMMS-SC7001		Rita		2019-03-06	
				REV. B		CUSTOMER		APPROVED BY		DATE	
				WC-REV. A.1		ALTW		Max		2019-03-06	
				QC: Inspection item							

Amphenol LTW  
安費諾亮泰企業股份有限公司

# Mouser Electronics

Authorized Distributor

Click to View Pricing, Inventory, Delivery & Lifecycle Information:

[Amphenol:](#)

[ADD-18PMMS-SC7001](#)