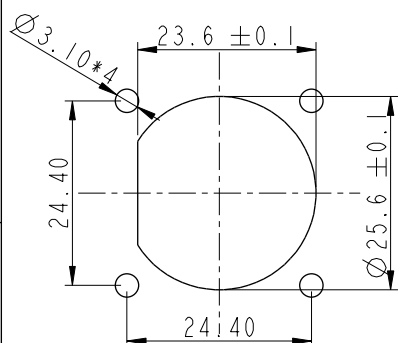
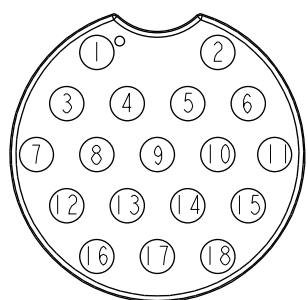
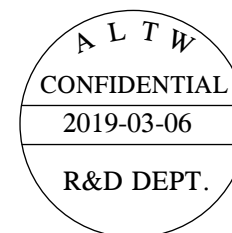
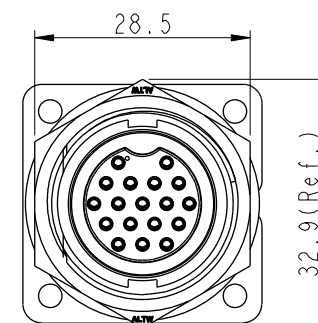
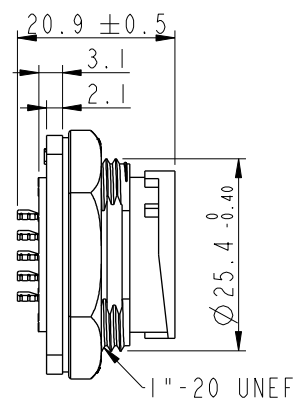
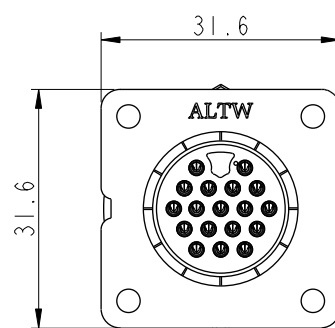


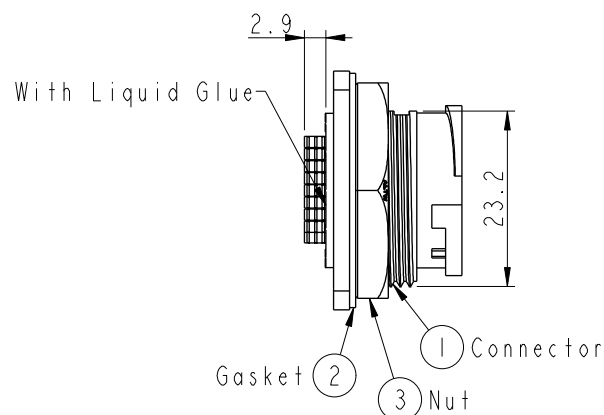
REV.	ECN NO.	DATE	SIGN	DESCRIPTION
B	C190347	2019/03/06	Vicky	Change Note



Recommended Panel
Cut-Out



Pin Assignments
Front View



- Note:**
- * **QC** Important Dimension To Check.
 - * Waterproof Rate: IP67, Unmated.
 - * Housing: Thermoplastic, Black.
 - * Pin: Copper Alloy, Gold Plated.
 - * Gasket: Rubber, Gray.
 - * Nut: Thermoplastic, Black
 - * Use with waterproof cap or dust cap
Maximum Panel Thickness: 1.8mm
 - * Use without waterproof cap or dust cap
Maximum Panel Thickness: 3.0mm
 - * Gasket and Nut are packed separately
in PE bags. (Gasket/Nut不組裝, 散裝出貨)

UNIT: mm		TOLERANCE		TITLE		ITEM NO.		DRAWN BY		DATE	
.X ±0.25		.XX ±0.1		LARGE		ADD-18PMFS-LS7001		Vicky		2019-03-06	
.XXX ±0.05		ANGLES ±1°		PANEL LOCK 18P M CONN F PIN		DWG NO.		CHECKED BY		DATE	
REV. B		WC-REV. A.1		SCALE 1:1		ADD-18PMFS-LS7001		Rita		2019-03-06	
SHEET 1 OF 1		QC: Inspection item		REV. B		CUSTOMER		APPROVED BY		DATE	
ALTW		Max		ALTW		ALTW		Max		2019-03-06	

Amphenol LTW
安費諾亮泰企業股份有限公司

Mouser Electronics

Authorized Distributor

Click to View Pricing, Inventory, Delivery & Lifecycle Information:

[Amphenol:](#)

[ADD-18PMFS-LS7001](#)