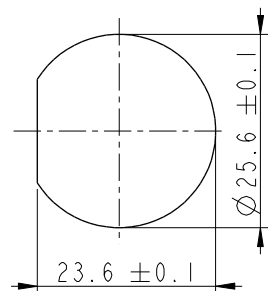
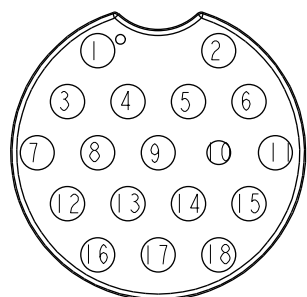
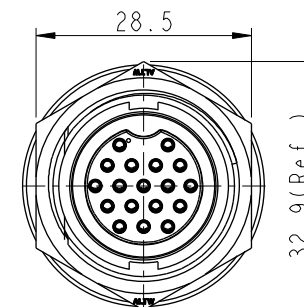
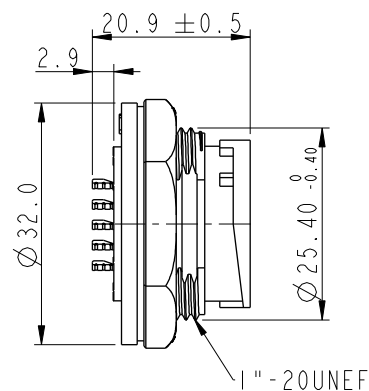
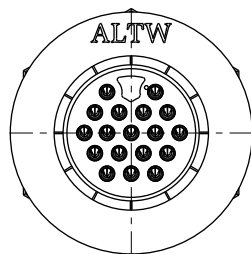


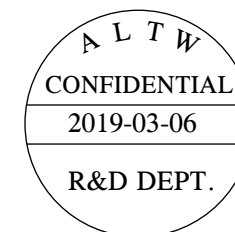
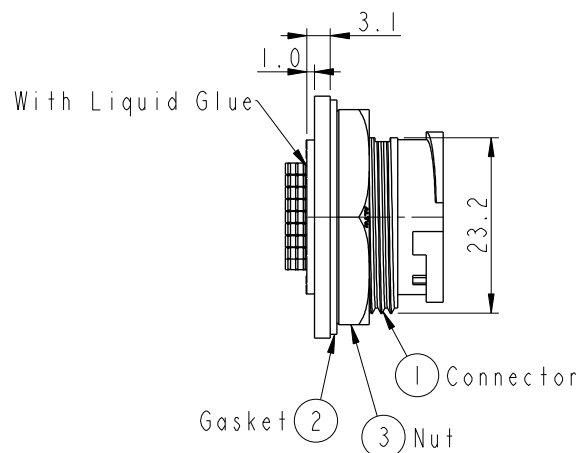
REV.	ECN NO.	DATE	SIGN	DESCRIPTION
B	C190347	2019/03/06	Vicky	Change Note



Recommended Panel
Cut-Out

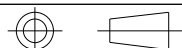


Pin Assignments
Front View



- Note:
- * Important Dimension To Check.
 - * Waterproof Rate: IP67, Unmated.
 - * Housing: Thermoplastic, Black.
 - * Pin: Copper Alloy, Gold Plated.
 - * Nut: Thermoplastic, Black.
 - * Gasket: Rubber, Gray.
 - * Use with waterproof cap or dust cap
Maximum Panel Thickness: 1.8mm
 - * Use without waterproof cap or dust cap
Maximum Panel Thickness: 3.0mm
 - * Gasket and Nut are packed separately
in PE bags. (Gasket/Nut 不組裝・散裝出貨)

UNIT:mm



TOLERANCE
.X ±0.25
.XX ±0.1
.XXX ±0.05
ANGLES ±1°

TITLE
LARGE
PANEL LOCK 18P M CONN F PIN

SCALE 1:1
SIZE A4
SHEET 1 OF 1
REV. B
WC-REV. A.1
QC: Inspection item

Amphenol LTW
安費諾亮泰企業股份有限公司

ITEM NO	ADD-18PMFS-LC7001	DRAWN BY	Vicky	DATE	2019-03-06
DWG NO	ADD-18PMFS-LC7001	CHECKED BY	Rita	DATE	2019-03-06
CUSTOMER	ALTW	APPROVED BY	Max	DATE	2019-03-06

Mouser Electronics

Authorized Distributor

Click to View Pricing, Inventory, Delivery & Lifecycle Information:

[Amphenol:](#)

[ADD-18PMFS-LC7001](#)