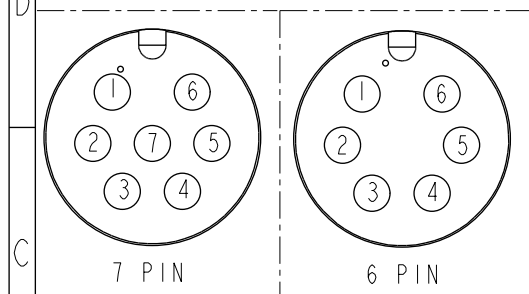
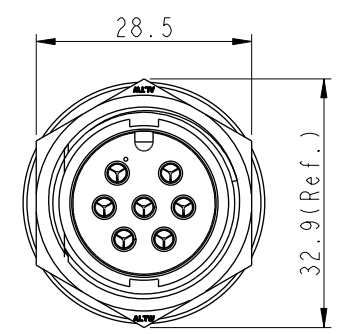
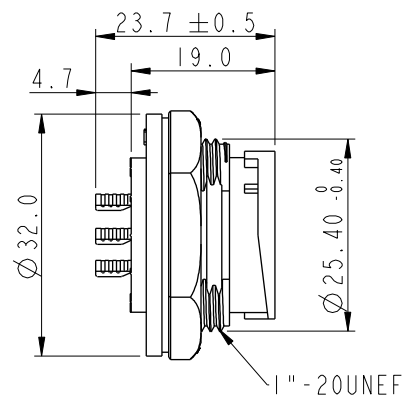
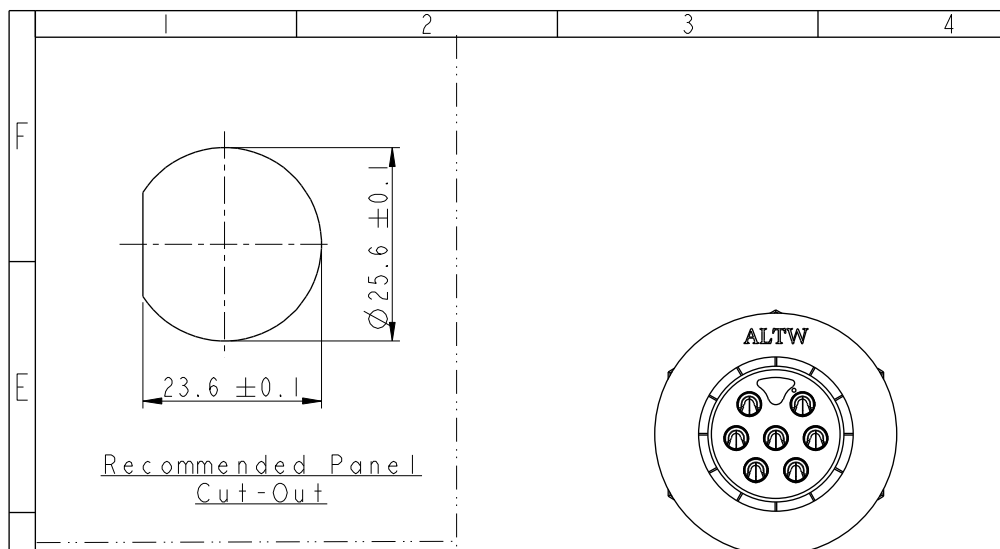


THIS DOCUMENT IS SUBJECT TO CHANGE WITHOUT NOTICE. IT IS CONFIDENTIAL AND A PROPERTY OF Amphenol LTW. DISCLOSURE TO THIRD PARTY HAS TO BE AUTHORIZED BY Amphenol LTW.

REV.	ECN NO.	DATE	SIGN	DESCRIPTION
B	C190347	2019/03/06	Vicky	Change Note

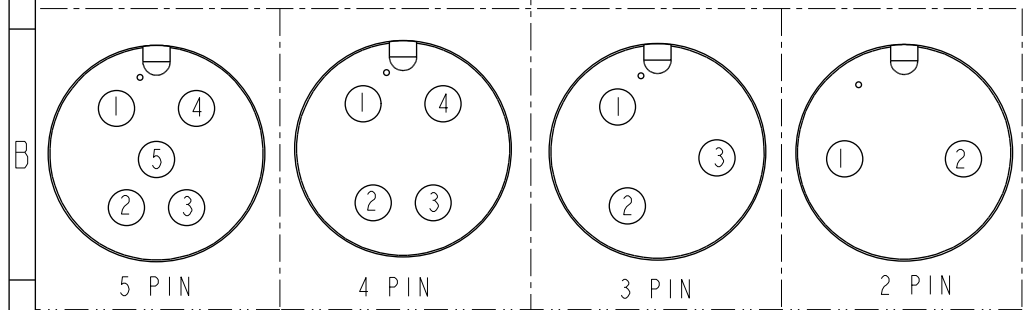
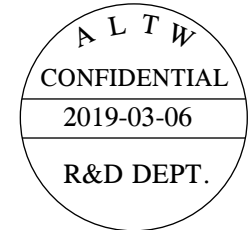
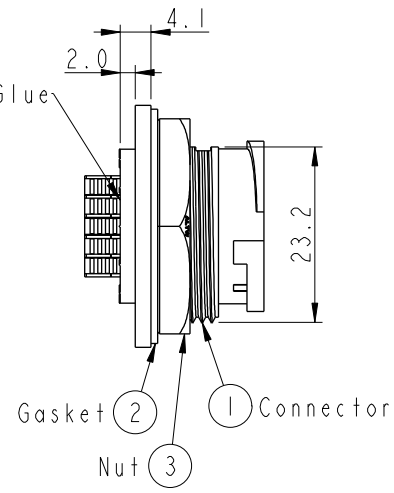


ADC-XXPMMS-LC7001

02: 2Pin

07: 7Pin

With Liquid Glue



- Note:
- * (QC) Important Dimension To Check.
 - * Waterproof Rate: IP67, Unmated.
 - * Housing: Thermoplastic, Black.
 - * Pin: Copper Alloy, Gold Plated.
 - * Nut: Thermoplastic, Black.
 - * Gasket: Rubber, Gray.
 - * Use with waterproof cap or dust cap
Maximum Panel Thickness: 1.8mm
 - * Use without waterproof cap or dust cap
Maximum Panel Thickness: 3.0mm
 - * Gasket and Nut are packed separately in PE bags. (Gasket/Nut不組裝，散裝出貨)

UNIT: mm		TITLE	LARGE PANEL LOCK M CONN M PIN		
TOLERANCE		SCALE	SIZE	SHEET	OF
.X ±0.25		1:1	A4	1	1
.XX ±0.1		REV.	WC-REV.	QC: Inspection item	
.XXX ±0.05		B	A.2		
ANGLES ±1°					

Amphenol LTW

安費諾亮泰企業股份有限公司

ITEM NO	DRAWN BY	DATE
DWG NO	CHECKED BY	DATE
CUSTOMER	APPROVED BY	DATE
ADC-XXPMMS-LC7001	Vicky	2019-03-06
ALTW	Rita	2019-03-06
	Max	2019-03-06

Mouser Electronics

Authorized Distributor

Click to View Pricing, Inventory, Delivery & Lifecycle Information:

[Amphenol:](#)

[ADC-07PMMS-LC7001](#) [ADC-03PMMS-LC7001](#) [ADC-02PMMS-LC7001](#) [ADC-04PMMS-LC7001](#) [ADC-06PMMS-LC7001](#) [ADC-05PMMS-LC7001](#)