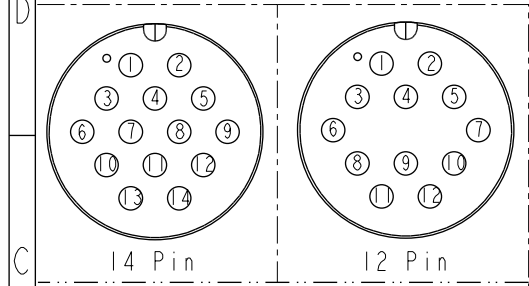
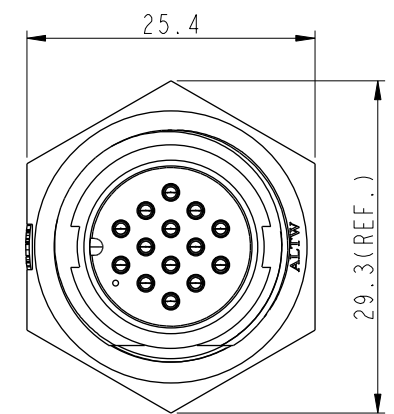
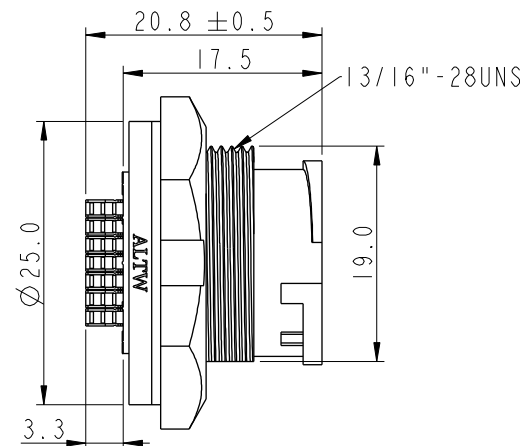
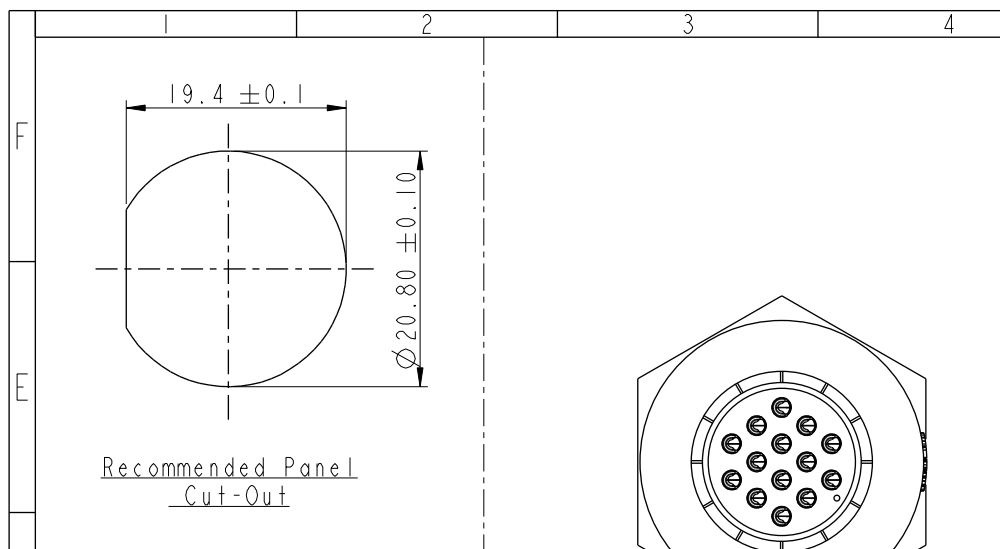


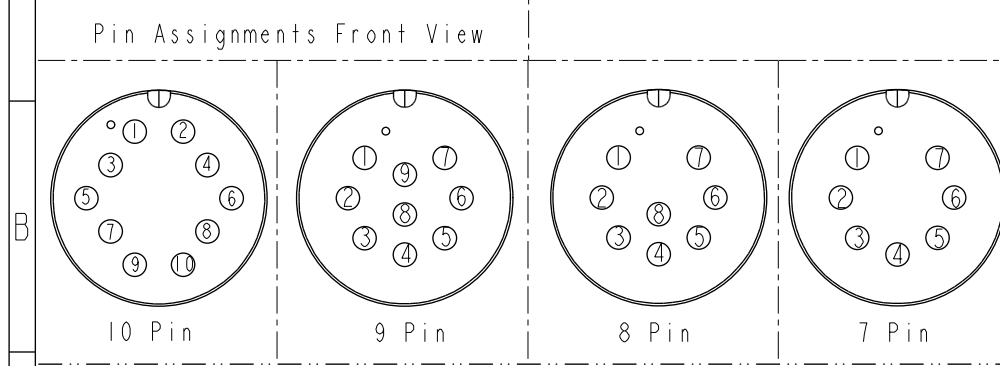
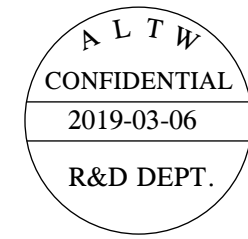
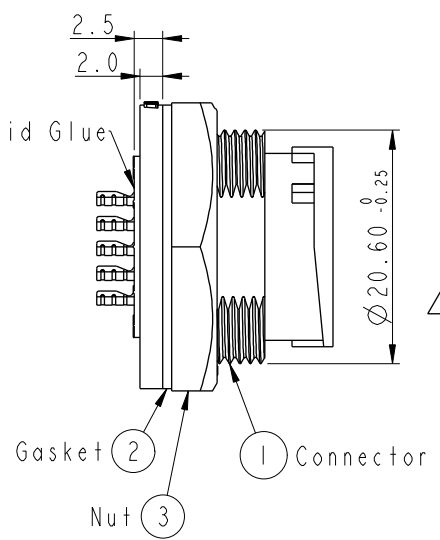
THIS DOCUMENT IS SUBJECT TO CHANGE WITHOUT NOTICE. IT IS CONFIDENTIAL AND A PROPERTY OF Amphenol LTW. DISCLOSURE TO THIRD PARTY HAS TO BE AUTHORIZED BY Amphenol LTW.

REV.	ECN NO.	DATE	SIGN	DESCRIPTION
B	C190348	2019/03/06	Vicky	Change Note



ACD-XXPMS-LC7001
07: 7Pin
14: 14Pin

With Liquid Glue



- Note:
- * Important Dimension To Check.
 - * Waterproof Rate: IP67, Unmated.
 - * Housing: Thermoplastic, Black.
 - * Pin: Copper Alloy, Gold Plated.
 - * Nut: Thermoplastic, Black.
 - * Gasket: Rubber, Gray.
 - * Use with waterproof cap or dust cap
Maximum Panel Thickness: 2.8mm
 - * Use without waterproof cap or dust cap
Maximum Panel Thickness: 4.0mm
 - * Gasket and Nut are packed separately
in PE bags. (Gasket/Nut不組裝，散裝出貨)

UNIT: mm		TOLERANCE		TITLE	
.X	±0.25	MIDDLE		PANEL LOCK M CONN M PIN	
.XX	±0.1	SCALE	3:2	SIZE	A4
.XXX	±0.05	REV.	B	WC-REV.	A.2
ANGLES	±1°	SHEET		1 OF 1	
		QC: Inspection item			

Amphenol LTW
安費諾亮泰企業股份有限公司

ITEM NO	DRAWN BY	DATE
DWG NO	CHECKED BY	DATE
CUSTOMER	APPROVED BY	DATE
ALTW	Max	2019-03-06

Mouser Electronics

Authorized Distributor

Click to View Pricing, Inventory, Delivery & Lifecycle Information:

[Amphenol:](#)

[ACD-09PMMS-LC7001](#) [ACD-12PMMS-LC7001](#) [ACD-07PMMS-LC7001](#)