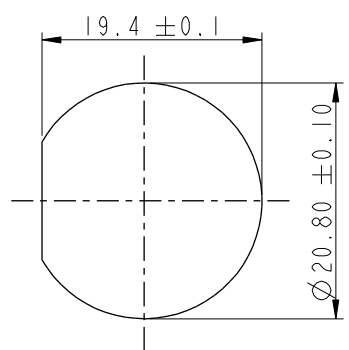
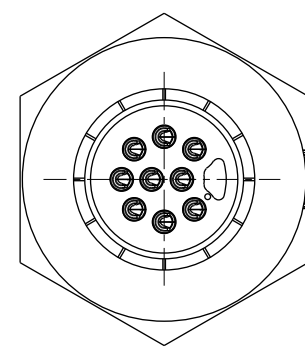


THIS DOCUMENT IS SUBJECT TO CHANGE WITHOUT NOTICE. IT IS CONFIDENTIAL AND A PROPERTY OF Amphenol LTW. DISCLOSURE TO THIRD PARTY HAS TO BE AUTHORIZED BY Amphenol LTW.

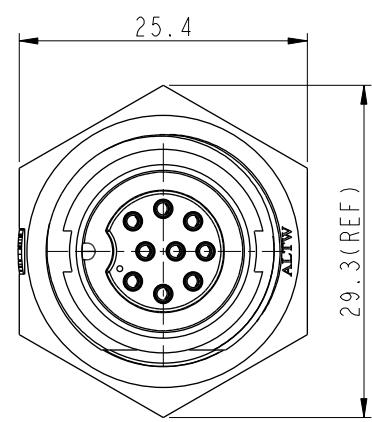
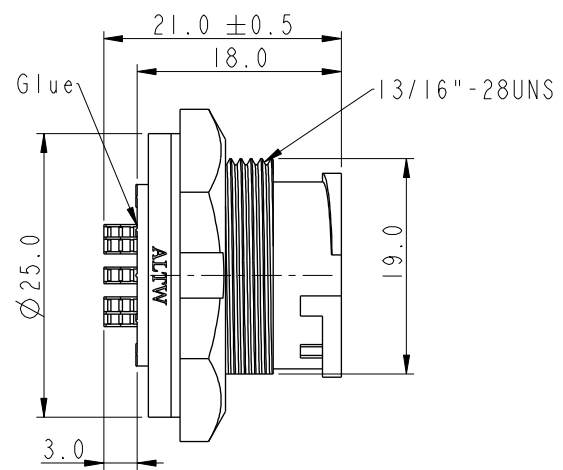
REV.	ECN NO.	DATE	SIGN	DESCRIPTION
B	C190348	2019/03/06	Vicky	Change Note



Recommended Panel
Cut-Out



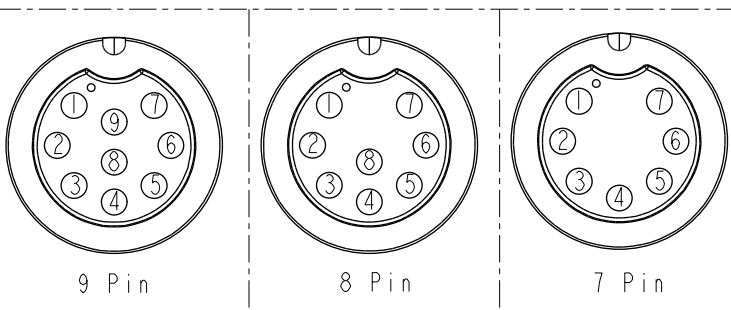
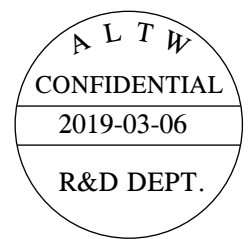
With Liquid Glue



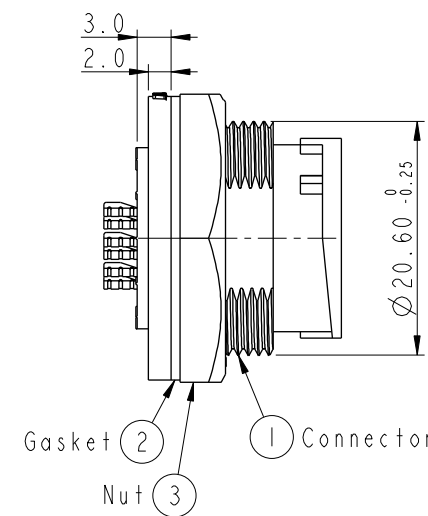
ACD-XXPMFS-LC7001

07: 7Pin

09: 9Pin



Pin Assignments Front View



- Note:
- * Important Dimension To Check.
 - * Waterproof Rate: IP67, Unmated.
 - * Housing: Thermoplastic, Black.
 - * Pin: Copper Alloy, Gold Plated.
 - * Nut: Thermoplastic, Black.
 - * Gasket: Rubber, Gray.
 - * Use with waterproof cap or dust cap
Maximum Panel Thickness: 2.8mm
 - * Use without waterproof cap or dust cap
Maximum Panel Thickness: 4.0mm
 - * Gasket and Nut are packed separately
in PE bags. (Gasket/Nut不組裝, 散裝出貨)

UNIT: mm		TITLE		MIDDLE PANEL LOCK M CONN F PIN		ITEM NO		DRAWN BY		DATE	
TOLERANCE		SCALE		SIZE		DWG NO		CHECKED BY		DATE	
.X ±0.25		3:2		A4		ACD-XXPMFS-LC7001		Rita		2019-03-06	
.XX ±0.1		REV.		WC-REV.		CUSTOMER		APPROVED BY		DATE	
.XXX ±0.05		B		A.2		ALTW		Max		2019-03-06	
ANGLES ±1°											

Amphenol LTW
安費諾亮泰企業股份有限公司

QC: Inspection item

Mouser Electronics

Authorized Distributor

Click to View Pricing, Inventory, Delivery & Lifecycle Information:

[Amphenol:](#)

[ACD-09PMFS-LC7001](#) [ACD-07PMFS-LC7001](#)