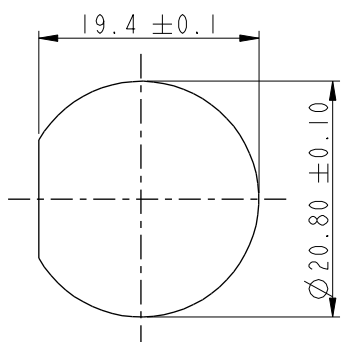
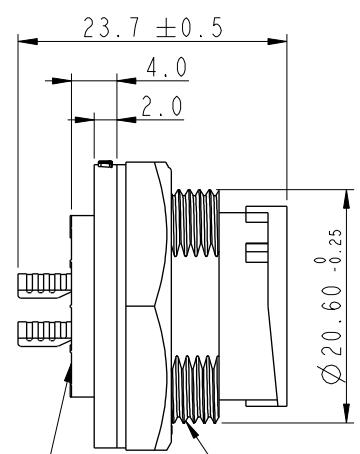
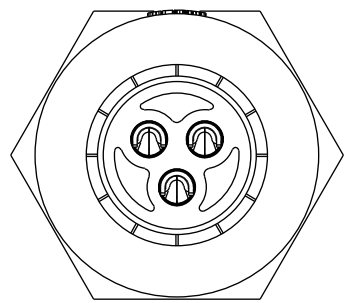


THIS DOCUMENT IS SUBJECT TO CHANGE WITHOUT NOTICE. IT IS CONFIDENTIAL AND A PROPERTY OF Amphenol LTW. DISCLOSURE TO THIRD PARTY HAS TO BE AUTHORIZED BY Amphenol LTW.

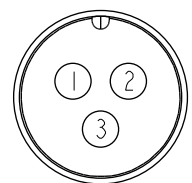
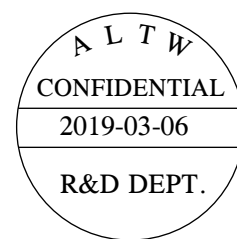
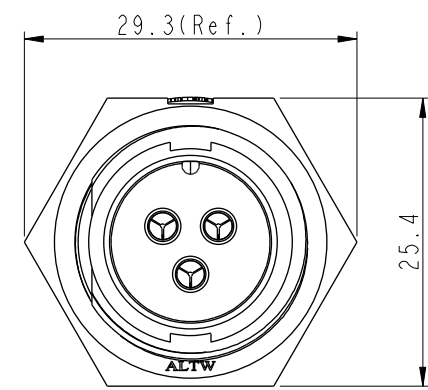
REV.	ECN NO.	DATE	SIGN	DESCRIPTION
B	C190348	2019/03/06	Vicky	Change Note



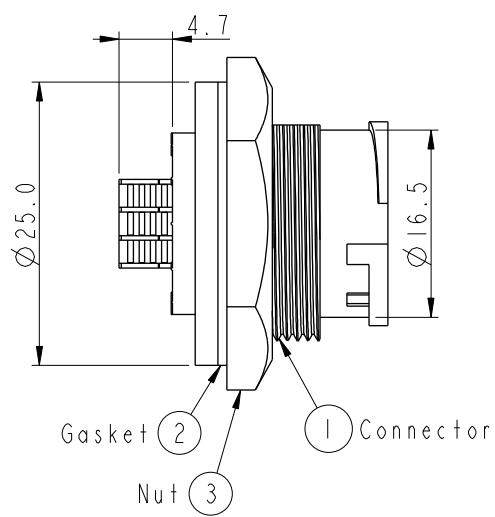
Recommended Panel
Cut-Out



With Liquid GLue



Pin Assignments
Front View



- Note:
- * Important Dimension To Check.
 - * Waterproof Rate: IP67, Unmated.
 - * Housing: Thermoplastic, Black.
 - * Pin: Copper Alloy, Gold Plated.
 - * Nut: Thermoplastic, Black.
 - * Gasket: Rubber, Gray.
 - * Use with waterproof cap or dust cap
Maximum Panel Thickness: 2.8mm
 - * Use without waterproof cap or dust cap
Maximum Panel Thickness: 4.0mm
 - * Gasket and Nut are packed separately
in PE bags. (Gasket/Nut不組裝，散裝出貨)

UNIT:mm		TOLERANCE		TITLE		MIDDLE		ITEM NO		DRAWN BY		DATE	
.X ±0.25		.XX ±0.1		SCALE		PANEL LOCK 3PIN M CONN M PIN		ACC-03PMMS-LC7001		Vicky		2019-03-06	
.XXX ±0.05		ANGLES ±1°		SIZE		A4		DWG NO		CHECKED BY		DATE	
REV. B		WC-REV. A.1		SHEET		1 OF 1		ACC-03PMMS-LC7001		Rita		2019-03-06	
								CUSTOMER		APPROVED BY		DATE	
								ALTW		Max		2019-03-06	

Amphenol LTW
安費諾亮泰企業股份有限公司

Mouser Electronics

Authorized Distributor

Click to View Pricing, Inventory, Delivery & Lifecycle Information:

[Amphenol:](#)

[ACC-03PMMS-LC7001](#)