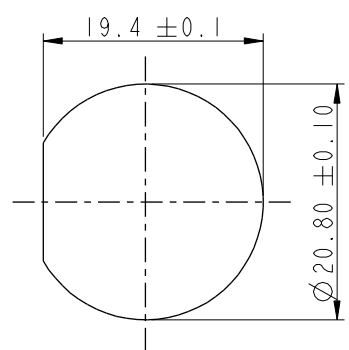
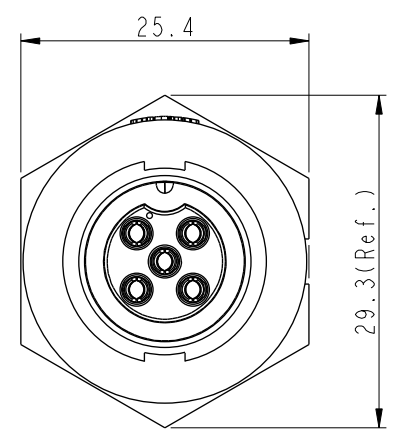
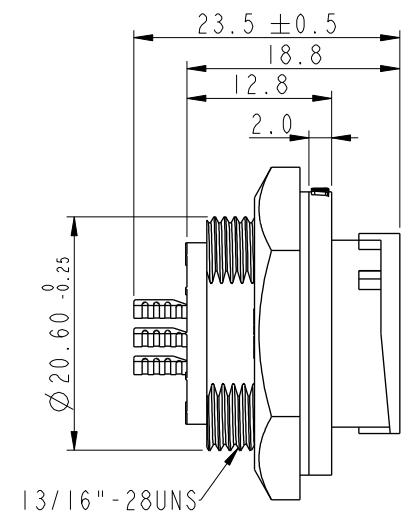
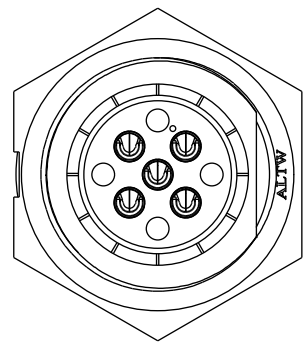


THIS DOCUMENT IS SUBJECT TO CHANGE WITHOUT NOTICE. IT IS CONFIDENTIAL AND A PROPERTY OF Amphenol LTW. DISCLOSURE TO THIRD PARTY HAS TO BE AUTHORIZED BY Amphenol LTW.

REV.	ECN NO.	DATE	SIGN	DESCRIPTION
B	C190348	2019/03/06	Vicky	Change Note

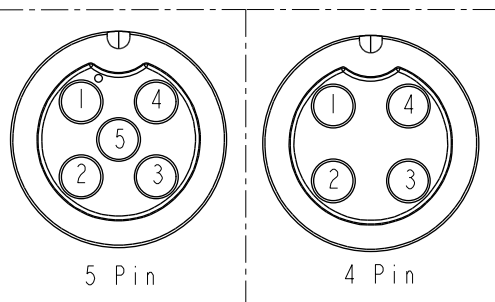
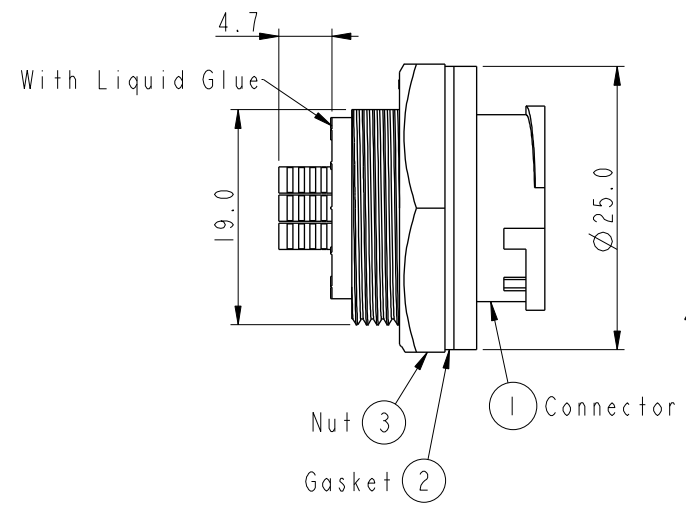


Recommended Panel  
Cut-Out



ACB-XXRMFS-LC7001

04:4Pin  
:  
05:5Pin



Pin Assignments Front View

- Note:
- \* Important Dimension To Check.
  - \* Waterproof Rate: IP67, Unmated.
  - \* Housing: Thermoplastic, Black.
  - \* Pin: Copper Alloy, Gold Plated.
  - \* Nut: Thermoplastic, Black.
  - \* Gasket: Rubber, Gray.
  - \* Maximum Panel Thickness: 4.0mm
  - \* Gasket and Nut are packed separately in PE bags. (Gasket/Nut不組裝，散裝出貨)

UNIT:mm		TOLERANCE		TITLE		ITEM NO		DRAWN BY		DATE	
TOLERANCE		SCALE		MIDDLE		DWG NO		Vicky		2019-03-06	
.X ±0.25		3:2		PANEL LOCK M CONN F PIN		ACB-XXRMFS-LC7001		Rita		2019-03-06	
.XX ±0.1		REV. B		SIZE A4		CUSTOMER		Max		2019-03-06	
.XXX ±0.05		WC-REV. A.2		SHEET 1 OF 1		ALTW					
ANGLES ±1°				QC: Inspection item							

Amphenol LTW  
安費諾亮泰企業股份有限公司

# Mouser Electronics

Authorized Distributor

Click to View Pricing, Inventory, Delivery & Lifecycle Information:

[Amphenol:](#)

[ACB-04RMFS-LC7001](#) [ACB-05RMFS-LC7001](#)