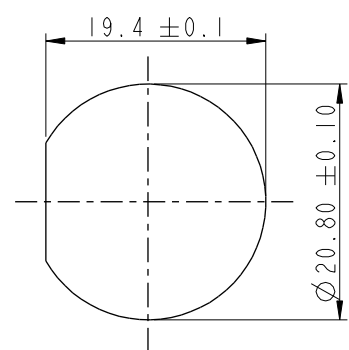
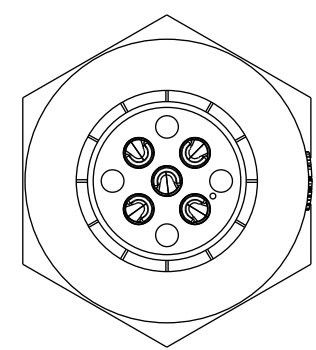


THIS DOCUMENT IS SUBJECT TO CHANGE WITHOUT NOTICE. IT IS CONFIDENTIAL AND A PROPERTY OF Amphenol LTW. DISCLOSURE TO THIRD PARTY HAS TO BE AUTHORIZED BY Amphenol LTW.

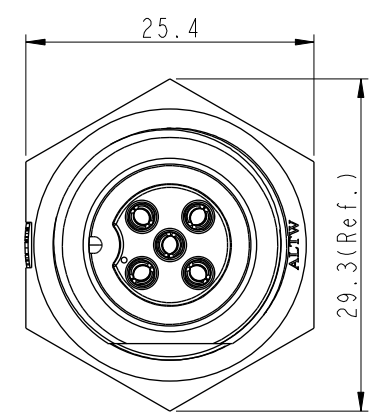
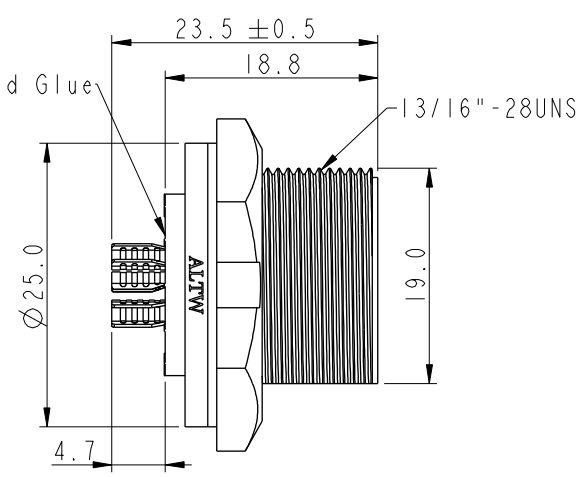
REV.	ECN NO.	DATE	SIGN	DESCRIPTION
B	C190348	2019/03/06	Vicky	Change Note



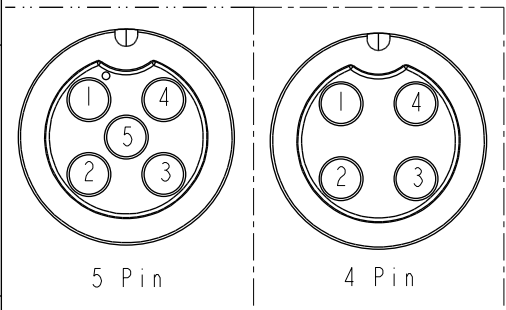
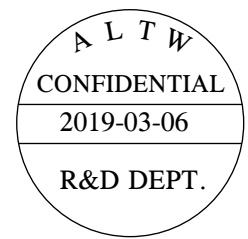
Recommended Panel  
Cut-Out



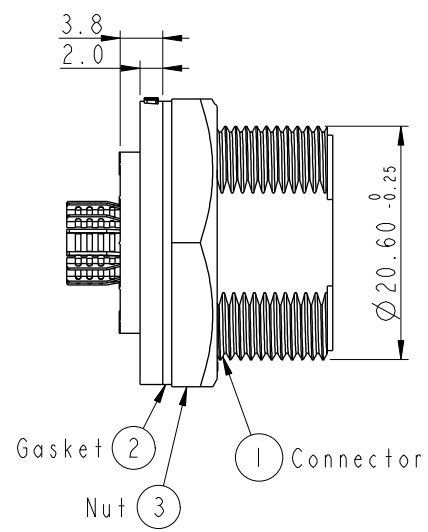
With Liquid Glue



ACB-XXPMFS-SC7001  
04: 4Pin  
:  
05: 5Pin



Pin Assignments Front View



- Note:
- \* (QC) Important Dimension To Check.
  - \* Waterproof Rate: IP67, Unmated.
  - \* Housing: Thermoplastic, Black.
  - \* Pin: Copper Alloy, Gold Plated.
  - \* Gasket: Rubber, Gray.
  - \* Nut: Thermoplastic, Black.
  - \* Use with waterproof cap or dust cap  
Maximum Panel Thickness: 2.3mm
  - \* Use without waterproof cap or dust cap  
Maximum Panel Thickness: 3.5mm
  - \* Gasket and Nut are packed separately  
in PE bags. (Gasket/Nut不組裝, 散裝出貨)

A	UNIT: mm		TITLE MIDDLE PANEL SCREW M CONN F PIN			ITEM NO		DRAWN BY Vicky		DATE 2019-03-06	
	TOLERANCE		SCALE 3:2	SIZE A4	SHEET 1 OF 1	DWG NO ACB-XXPMFS-SC7001		CHECKED BY Rita		DATE 2019-03-06	
	ANGLES		REV. B	WC-REV. A.2	(QC): Inspection item	CUSTOMER ALTW		APPROVED BY Max		DATE 2019-03-06	

Amphenol LTW  
安費諾亮泰企業股份有限公司

# Mouser Electronics

Authorized Distributor

Click to View Pricing, Inventory, Delivery & Lifecycle Information:

[Amphenol:](#)

[ACB-05PMFS-SC7001](#)