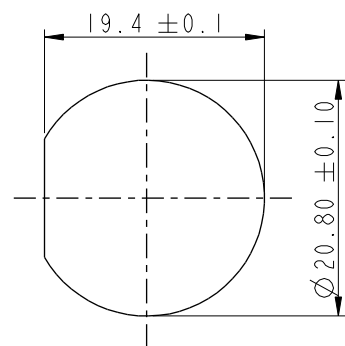
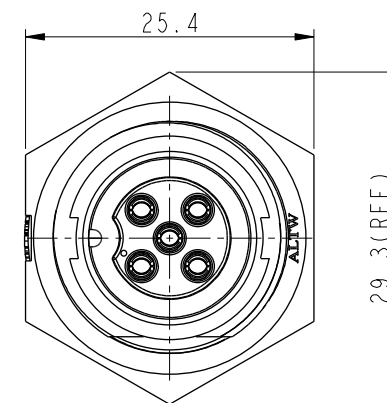
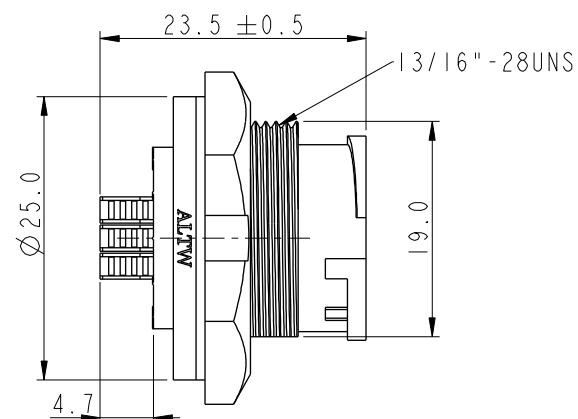
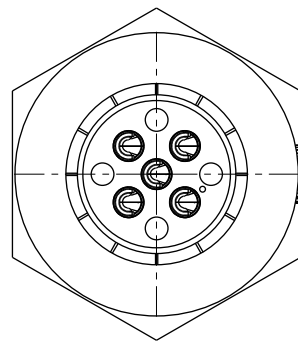


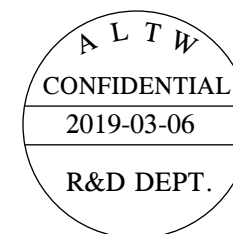
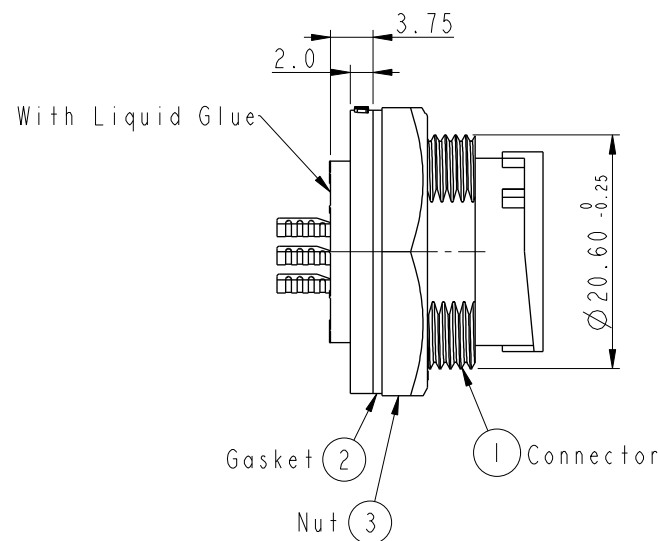
REV.	ECN NO.	DATE	SIGN	DESCRIPTION
B	LE31570272	2015/07/14	Jinhai	Change To Standard
C	CI90348	2019/03/06	Vicky	Change Note



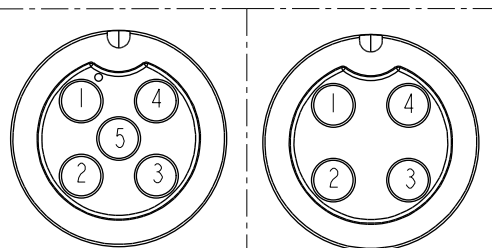
Recommended Panel  
Cut-Out



ACB-XXPMFS-LC7001  
04:5Pin  
:  
05:5Pin



- △ Note:
- \* Ⓞ Important Dimension To Check.
  - \* Waterproof Rate: IP67, Unmated.
  - \* Housing: Thermoplastic, Black.
  - \* Pin: Copper Alloy, Gold Plated.
  - \* Nut: Thermoplastic, Black.
  - \* Gasket: Rubber, Gray.
  - \* Use with waterproof cap or dust cap  
Maximum Panel Thickness: 2.8mm
  - \* Use without waterproof cap or dust cap  
Maximum Panel Thickness: 4.0mm
  - \* Gasket and Nut are packed separately  
in PE bags. (Gasket/Nut不組裝・散裝出貨)



Pin Assignments Front View

UNIT : mm			TITLE			ITEM NO		DRAWN BY		DATE					
<div>TOLERANCE</div> <div>.X ±0.25</div> <div>.XX ±0.1</div> <div>.XXX ±0.05</div> <div>ANGLES ±1°</div>			MIDDLE			Amphenol LTW		Vicky		2019-03-06					
			PANEL LOCK M CONN F PIN					ACB-XXPMFS-LC7001		Rita		2019-03-06			
			SCALE 3:2					SHEET 1 OF 1		APPROVED BY		Max		2019-03-06	
			REV. C					WC-REV. A.1		ALTW					
			QC: Inspection item												
						安費諾亮泰企業股份有限公司									

**Amphenol LTW**  
安費諾亮泰企業股份有限公司

# Mouser Electronics

Authorized Distributor

Click to View Pricing, Inventory, Delivery & Lifecycle Information:

[Amphenol:](#)

[ACB-04PMFS-LC7001](#)