

THIS DOCUMENT IS SUBJECT TO CHANGE WITHOUT NOTICE. IT IS CONFIDENTIAL AND A PROPERTY OF Amphenol LTW. DISCLOSURE TO THIRD PARTY HAS TO BE AUTHORIZED BY Amphenol LTW.

REV.	ECN NO.	DATE	SIGN	DESCRIPTION
B	C190346	2019/03/05	Vicky	Change Note

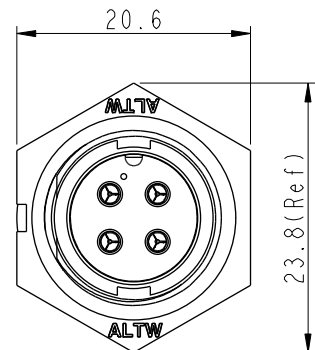
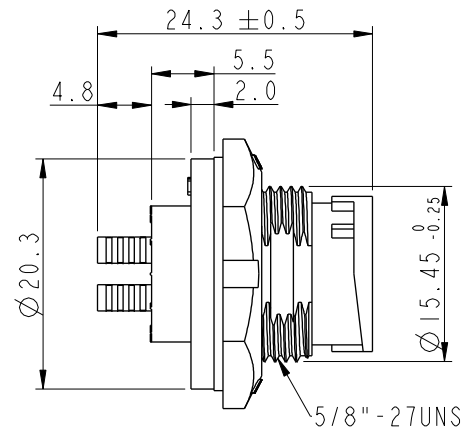
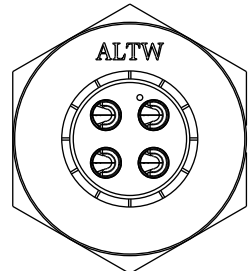
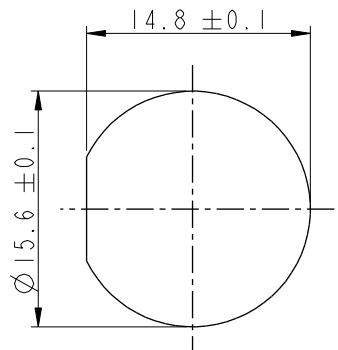
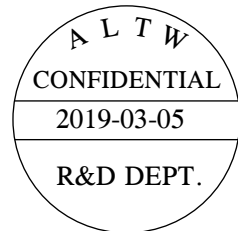
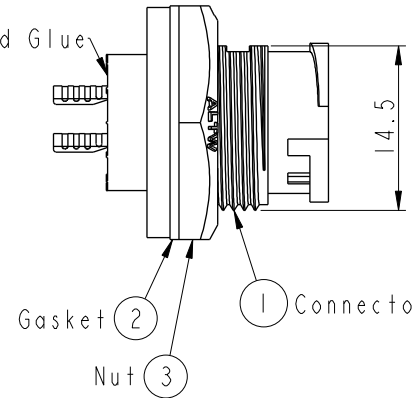


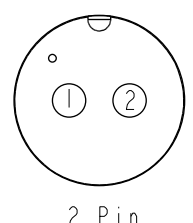
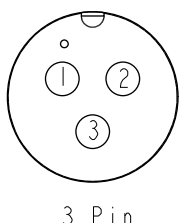
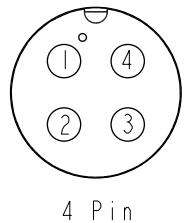
ABB-XXPMMS-LC7001

02: 2Pin  
04: 4Pin

With Liquid Glue



- Note:**
- \* Important Dimension To Check.
  - \* Waterproof Rate: IP67, Unmated.
  - \* Housing: Thermoplastic, Black.
  - \* Pin: Copper Alloy, Gold Plated.
  - \* Nut: Thermoplastic, Black.
  - \* Gasket: Rubber, Gray.
  - \* Use with waterproof cap or dust cap  
Maximum Panel Thickness: 2.8mm
  - \* Use without waterproof cap or dust cap  
Maximum Panel Thickness: 4.0mm
  - \* Gasket and Nut are packed separately in PE bags. (Gasket/Nut不組裝，散裝出貨)



Pin Assignments Front View

UNIT: mm		TITLE	STANDARD PANEL LOCK M CONN MPIN		
TOLERANCE		SCALE	3:2	SIZE	A4
.X ±0.25		REV.	B	WC-REV.	A.1
.XX ±0.1					
.XXX ±0.05					
ANGLES ±1°					

**Amphenol LTW**  
安費諾亮泰企業股份有限公司

ITEM NO	DRAWN BY	DATE
DWG NO	CHECKED BY	DATE
CUSTOMER	APPROVED BY	DATE
ABB-XXPMMS-LC7001	Vicky	2019-03-05
ALTW	Rita	2019-03-05
	Max	2019-03-05

# Mouser Electronics

Authorized Distributor

Click to View Pricing, Inventory, Delivery & Lifecycle Information:

[Amphenol:](#)

[ABB-04PMMS-LC7001](#) [ABB-02PMMS-LC7001](#)