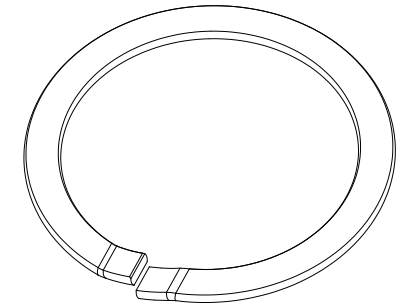
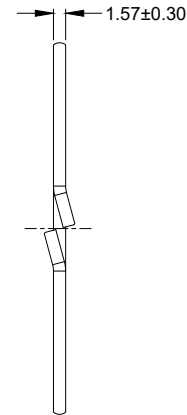
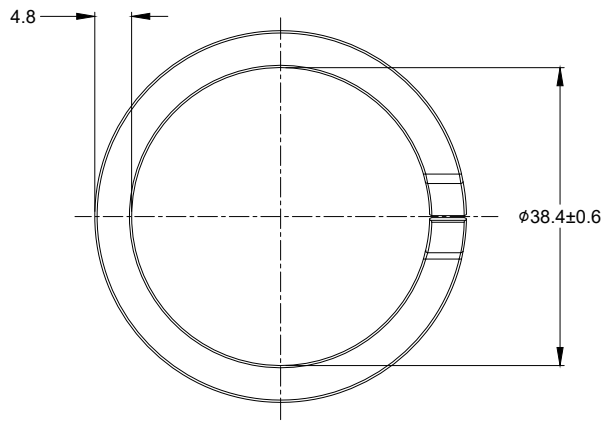


REVISIONS					
REV	ECO	DESCRIPTION	DATE	BY	APPR
A1	--	RELEASE NEW DRAWING	26/SEP/18	ROOKIE	TOMMY



NOTES: UNLESS OTHERWISE SPECIFIED

- 1. MATERIAL: STAINLESS STEEL.
- 2. USE WITH AHDM SERIES SIZE 18 RECEPTACLE.
- 3. RoHS COMPLIANT.
- 4. ALL DIMENSIONS ARE FOR REFERENCE USE ONLY.

A114021			
PART NUMBER		DESCRIPTION	
ITEM			
QUANTITY		MATERIALS LIST	
UNLESS OTHERWISE SPECIFIED		SIGNATURES	
1) All dimensions are in metric(mm).		DATE	
2) Tolerances are as follows:		DRAWN: ROOKIE	
1 PL DEC ±0.30		26/SEP/18	
2 PL DEC ±0.15		CHECKED: ORION	
3 PL DEC ±0.08		26/SEP/18	
3) Note reference =		ENGINEER:	
		APPROVAL: TOMMY	
		26/SEP/18	
MATERIAL SPECIFICATIONS:		CUSTOMER:	
PROCESS SPECIFICATIONS:		THIS DRAWING IS SUPPLIED FOR INFORMATION ONLY. DESIGN FEATURES, SPECIFICATIONS AND PERFORMANCE DATA SHOWN HEREON ARE THE PROPERTY OF THE AMPHENOL CORPORATION. NO RIGHTS OF REPRODUCTION ARE IMPLIED. ALL DIMENSIONS ARE SUBJECT TO NORMAL MANUFACTURING VARIATIONS.	
NEXT ASSY:		SIZE	
		TYPE	
		DWG NO:	
		REVISION	
		B C-	
		A114021	
		A1	
		SCALE: NONE	
		SHEET 1 OF 1	

TITLE: LOCKWASHER, AHDM, SIZE 18  
DWG NO: A114021  
REV: A1  
SH: 1  
OF: 1

# Mouser Electronics

Authorized Distributor

Click to View Pricing, Inventory, Delivery & Lifecycle Information:

[Amphenol:](#)

[A114021](#)