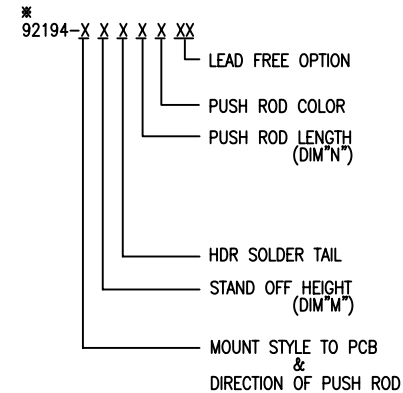


PRODUCT NO.

92194

PRODUCT NO. *92194-XXXXX	STAND OFF DIM "M"(mm)	UPPER DECK			LOWER DECK			DIM "P" (mm)	HDR COLOR	SHEET NO.	MOUNTING STYLE TO PCB & DIRECTION OF PUSH ROD
		(MECH+HDR) 92711-XXXXX	(MECH) 92192-XXXX	(HDR) 92140-XXX	(MECH+HDR) 92193-XXXXX	(MECH) 92192-XXXX	(HDR) 92140-XXX				
000CA	0	000CA	00CA	005	100CA	10CA	000	2.8	BLACK	NO.2	
000CALF	0	000CALF	00CA	005LF	100CALF	10CA	000LF	2.8	BLACK		
020CA	2	020CA	00CA	045	120CA	12CA	040	2.5	BLACK		
020CALF	2	020CALF	00CA	045LF	120CALF	12CA	040LF	2.5	BLACK	NO.3	
100CA	0	100CA	10CA	005	000CA	00CA	000	2.8	BLACK		
100CALF	0	100CALF	10CA	005LF	000CALF	00CA	000LF	2.8	BLACK		
120CA	2	120CA	10CA	045	020CA	02CA	040	2.5	BLACK	NO.4	
120CALF	2	120CALF	10CA	045LF	020CALF	02CA	040LF	2.5	BLACK		
200CA	0	000CA	00CA	005	000CA	00CA	000	2.8	BLACK		
200CALF	0	000CALF	00CA	005LF	000CALF	00CA	000LF	2.8	BLACK	NO.5	
200FA	0	000FA	00FA	005	000FA	00FA	000	2.8	BLACK		
200FALF	0	000FALF	00FA	005LF	000FALF	00FA	000LF	2.8	BLACK		
220CA	2	020CA	00CA	045	020CA	02CA	040	2.5	BLACK	NO.6	
220CALF	2	020CALF	00CA	045LF	020CALF	02CA	040LF	2.5	BLACK		
300CA	0	100CA	10CA	005	100CA	10CA	000	2.8	BLACK		
300CALF	0	100CALF	10CA	005LF	100CALF	10CA	000LF	2.8	BLACK	NO.7	
320CA	2	120CA	10CA	045	120CA	12CA	040	2.5	BLACK		
320CALF	2	120CALF	10CA	045LF	120CALF	12CA	040LF	2.5	BLACK		
320FA	2	120FA	10FA	045	120FA	12FA	040	2.5	BLACK	NO.8	
320FALF	2	120FALF	10FA	045LF	120FALF	12FA	040LF	2.5	BLACK		
320GALF	2	120GALF	10CA	045LF	120GALF	12GALF	040LF	2.5	BLACK		
500CA	0	600CA	00CA	505	500CA	10CA	500	2.8	NATURAL	NO.9	
500CALF	0	600CALF	00CA	505LF	500CALF	10CA	500LF	2.8	NATURAL		
500FA	0	600FA	00FA	505	500FA	10FA	500	2.8	NATURAL		
500FALF	0	600FALF	00FA	505LF	500FALF	10FA	500LF	2.8	NATURAL	NO.10	
520CA	2	620CA	00CA	545	520CA	12CA	540	2.5	NATURAL		
520CALF	2	620CALF	00CA	545LF	520CALF	12CA	540LF	2.5	NATURAL		
600CA	0	500CA	10CA	505	600CA	00CA	500	2.8	NATURAL	NO.11	
600CALF	0	500CALF	10CA	505LF	600CALF	00CA	500LF	2.8	NATURAL		
620CA	2	520CA	10CA	545	620CA	02CA	540	2.5	NATURAL		
620CALF	2	520CALF	10CA	545LF	620CALF	02CA	540LF	2.5	NATURAL	NO.12	
700CA	0	500CA	10CA	505	500CA	10CA	500	2.8	NATURAL		
700CALF	0	500CALF	10CA	505LF	500CALF	10CA	500LF	2.8	NATURAL		
720CA	2	520CA	10CA	545	520CA	12CA	540	2.5	NATURAL	NO.13	
720CALF	2	520CALF	10CA	545LF	520CALF	12CA	540LF	2.5	NATURAL		
800CA	0	600CA	00CA	505	600CA	00CA	500	2.8	NATURAL		
800CALF	0	600CALF	00CA	505LF	600CALF	00CA	500LF	2.8	NATURAL	NO.14	
820CA	2	620CA	00CA	545	620CA	02CA	540	2.5	NATURAL		
820CALF	2	620CALF	00CA	545LF	620CALF	02CA	540LF	2.5	NATURAL		






NONE : NO
LF : YES (SEE NOTE5)

A : BLACK
C : 13mm
F : 21mm
G : 27mm

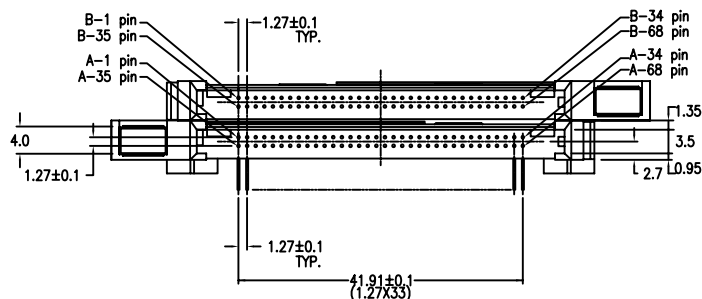
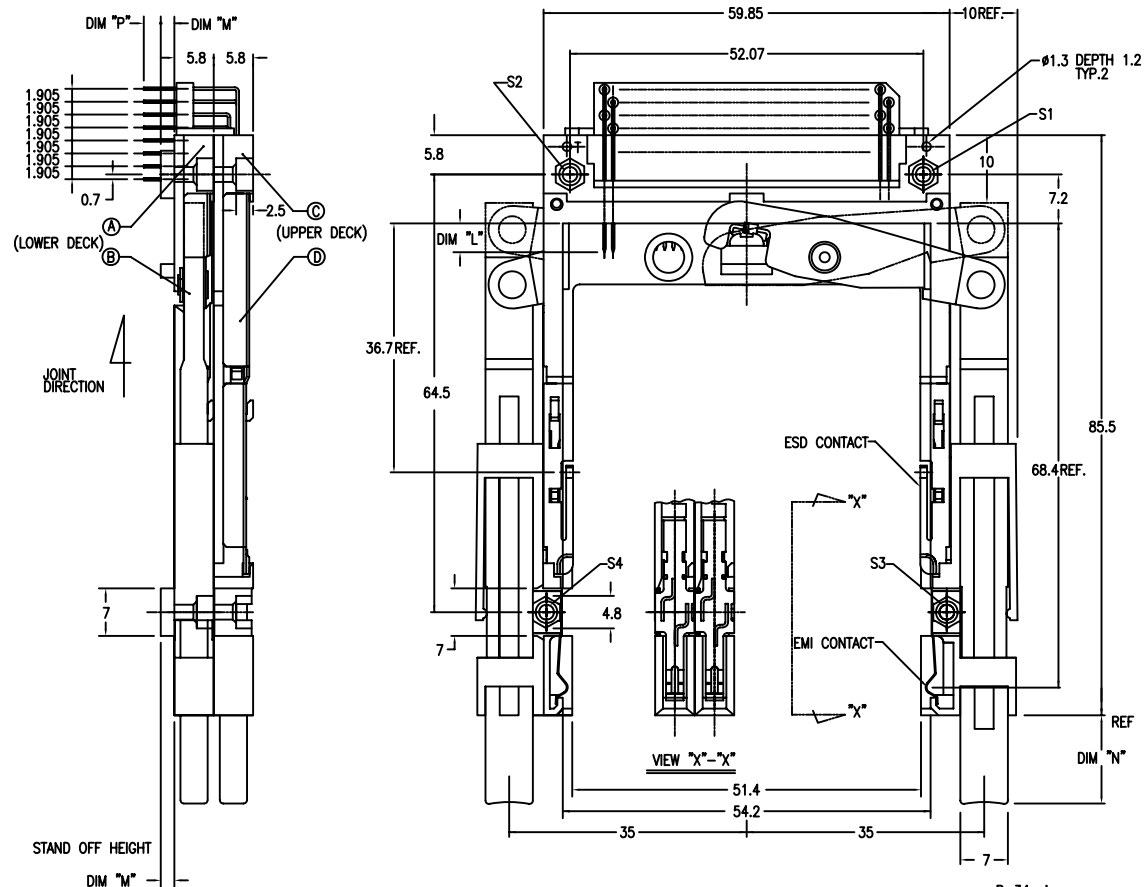
0 : R/A
0 : 0mm(NONE)
2 : 2mm

0 : TOP MOUNT & RIGHT-LEFT PUSH ROD
1 : TOP MOUNT & LEFT-RIGHT PUSH ROD
2 : TOP MOUNT & RIGHT-RIGHT PUSH ROD
3 : TOP MOUNT & LEFT-LEFT PUSH ROD
5 : BOTTOM MOUNT & RIGHT-LEFT PUSH ROD
6 : BOTTOM MOUNT & LEFT-RIGHT PUSH ROD
7 : BOTTOM MOUNT & RIGHT-RIGHT PUSH ROD
8 : BOTTOM MOUNT & LEFT-LEFT PUSH ROD

NOTE
1.THIS PRODUCT MEETS EUROPEAN UNION
DIRECTIVES AND OTHER COUNTRY
REGULATIONS AS DESCRIBED IN GS-22-008.
2.PRODUCT SPEC: 110-263

mat'l. code				surface ISO1302		tolerance ISO1302 ISO1101		projection 		product family PCMCIA				
ltr	ecn no	dr	date	tolerances unless otherwise specified						title				
H	ELX-N-007950	ZK	11/01/11	angles		Linear				68P DOUBLE EJECTOR HEADER ASSY				
J	ELX-N-011430	ZK	04/23/12							FOR TYPE I/II/II				
K	ELX-N-20919	J.H	05/27/15	0°±x'		0.XXX±0.05				scale 2:1				
				dr		M.HASEGAWO		06/17/05		dwg no		sheet. 1 of 9		size
				engr		M.HASEGAWO		06/17/05				92194		A4
F	V04-0820	M.H	08/16/04	chr		M.HASEGAWO		06/20/05						
G	J05-0367	M.H	6/17/05	appd		M.HASEGAWO		06/20/05						
sheet index		revision		k										
		sheet		1-9										

PART NO.	
92194-000CA	92194-000CALF
92194-020CA	92194-020CALF



NOTE

1. EJECT FORCE 3.5kg MAX.
2. ASSY PROCESS
 - 2.1 TO MOUNT PART ④, ⑤ ON PWB WITH SCREW (S1,S2) AND SOLDER.
 - 2.2 TO JOINT PART ③, ⑥ INTO PART ④, ⑤ THEN FIX PART ③, ⑥ WITH 2 SCREWS (S3,S4).
3. EJECT TRAVEL 8.0mm

④ MATERIAL

- 4.1 PART (A), (C) (HEADER ASSY)
PLASTIC : HIGH TEMPERATURE THERMOPLASTIC UL94V-0 BLACK
PIN : COPPER ALLOY

4.2 PART ③, ④ (EJECT MECHANISM ASSY)

- PLASTIC : HIGH TEMPERATURE THERMOPLASTIC UL94V-0 BLACK
 PLATE : STAINLESS
 EMI CONTACT : COPPER ALLOY

⑤ -1 FINISH (PIN)

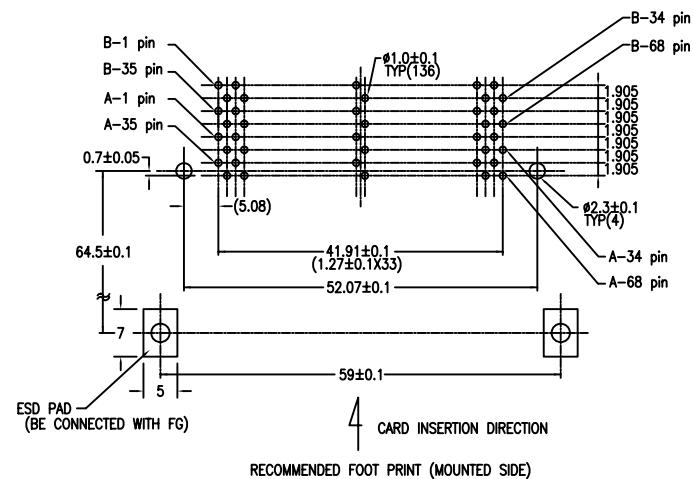
- UNDER PLATING : 0.5 μ m MIN. Ni
CONTACT AREA : 0.076 μ m MIN. GOLD
SOLDER TAIL : 2.5 μ m MIN. Sn-Pb.

⑤ -2 FINISH (PIN) (FOR -*****LF)

- UNDER PLATING : 0.5 μ m MIN. Ni
CONTACT AREA : 0.076 μ m MIN. GOLD
SOLDER TAIL : 2.5 μ m MIN. Sn.

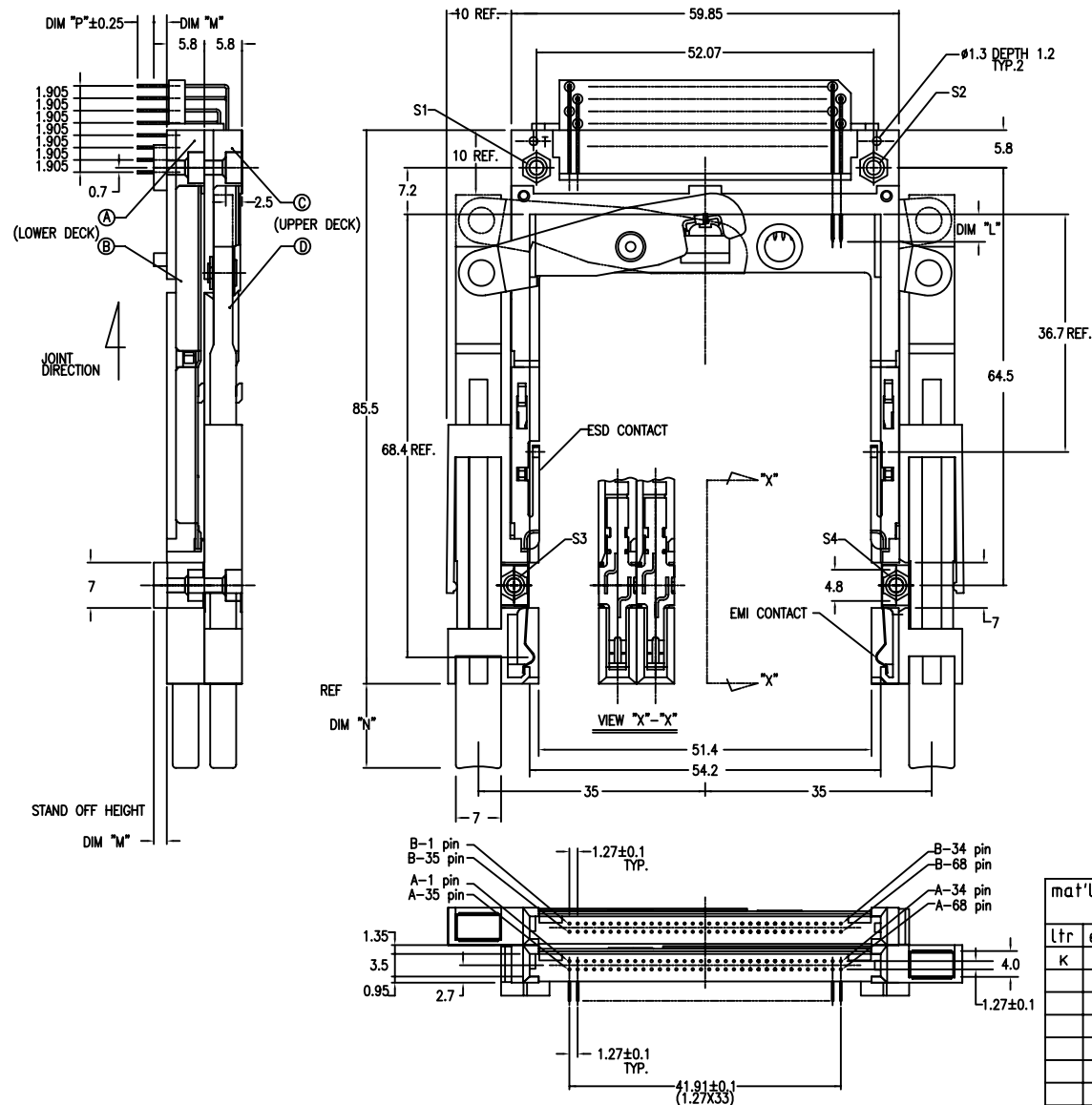
DIM "L"	4.25±0.1	3.5±0.1	5.0±0.1
PIN NUMBER	OTHERS	36.67	1.17 ³⁴ 35.51 ⁶⁸

7. GENERAL TOLERANCE : ± 0.3
8. SEE SHEET 1 REGARDING COMPONENTS



mat'l. code				surface ISO1302 ✓		tolerance ISO1302 ISO1101		projection 		product family PCMCIA			
ltr		ecn no		dr		date		tolerances unless otherwise specified		title			
K								<div> <div>angles</div> <div> $0.X \pm 0.3$ $0.XX \pm 0.13$ $0.XXX \pm 0.05$ </div> </div>		<div> <div>MM</div> <div>→</div> </div>		68P DOUBLE EJECTOR HEADER ASSY	
								scale 2:1		FOR TYPE I/II/II			
				dr		M.HASEGAWO		06/17/05		dwg no		sheet. 2 of 9	
				engr		M.HASEGAWO		06/17/05		92194		size	
				chr		M.HASEGAWO		06/20/05		A4			
				appd		M.HASEGAWO		06/20/05		type		Product Customer Drawing	
sheet index		revision sheet											

PRODUCT NO.	
92194-100CA	92194-100CALF
92194-120CA	92194-120CALF



NOTE

1. EJECT FORCE 3.5kg MAX.
2. ASSY PROCESS
 - 2.1 TO MOUNT PART ①, ② ON PWB WITH SCREW (S1,S2) AND SOLDER.
 - 2.2 TO JOINT PART ③, ④ INTO PART ① ② THEN FIX PART ③, ④ WITH 2 SCREWS (S3,S4).
3. EJECT TRAVEL 8.0mm

④ MATERIAL

- 4.1 PART ④, ⑤ (HEADER ASSY)
PLASTIC : HIGH TEMPERATURE THERMOPLASTIC UL94V-0 BLACK
PIN : COPPER ALLOY

- 4.2 PART ⑧, ⑩ (EJECT MECHANISM ASSY)
 PLASTIC : HIGH TEMPERATURE THERMOPLASTIC UL94V-0 BLACK
 PLATE : STAINLESS
 EMI CONTACT : COPPER ALLOY

- ⑤ -1 FINISH (PIN)

UNDER PLATING : 0.5 μm MIN. Ni
CONTACT AREA : 0.076 μm MIN. GOLD
SOLDER TAIL : 2.5 μm MIN. Sn-Pb.

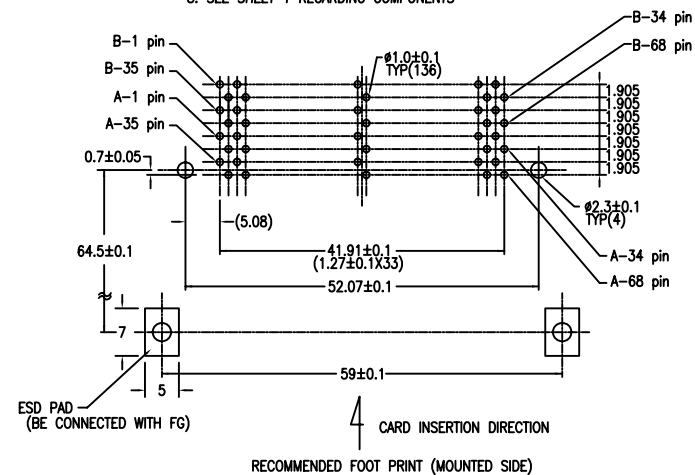
- ⑤ -2 FINISH (PIN) (FOR -*****LF)

UNDER PLATING : 0.5 μm MIN. Ni
CONTACT AREA : 0.076 μm MIN. GOLD
SOLDER TAIL : 2.5 μm MIN. Sn.

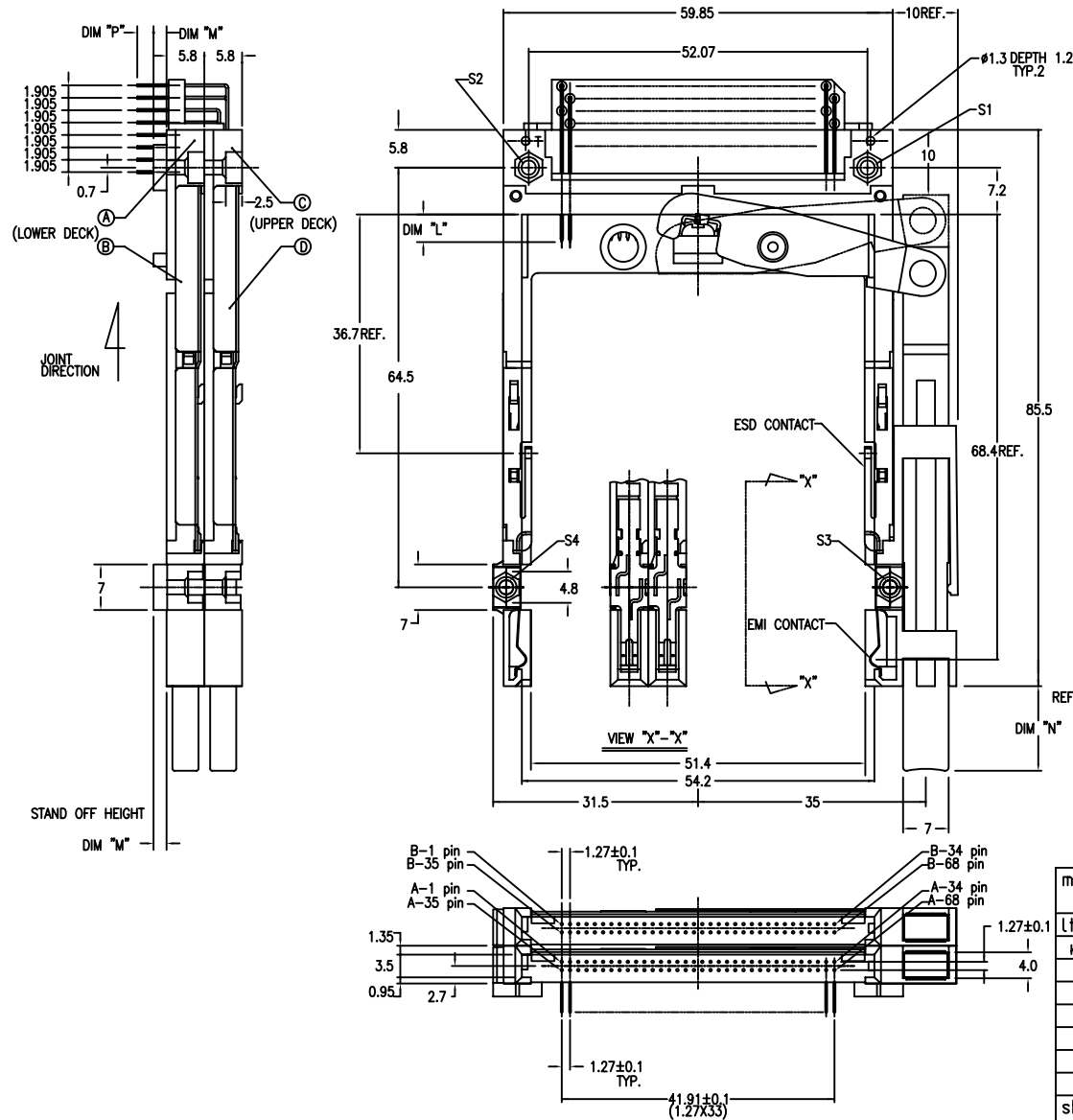
6.	DIM "L"	4.25±0.1	3.5±0.1	5.0±0.1
	PIN NUMBER	OTHERS	36.67	1.17, 34 35, 51, 68

7. GENERAL TOLERANCE : ± 0.3

8. SEE SHEET 1 REGARDING COMPONENTS

[illegible]

PART NO.	
92194-200CA	92194-200CALF
92194-200FA	92194-200FALF
92194-220CA	92194-220CALF



NOTE

- EJECT FORCE 3.5kg MAX.
- ASSY PROCESS
 - TO MOUNT PART ④, ⑤ ON PWB WITH SCREW (S1,S2) AND SOLDER.
 - TO JOINT PART ③, ⑥ INTO PART ④, ⑤ THEN FIX PART ③, ⑥ WITH 2 SCREWS (S3,S4).
- EJECT TRAVEL 8.0mm

④ MATERIAL

4.1 PART ④, ⑤ (HEADER ASSY)

PLASTIC : HIGH TEMPERATURE THERMOPLASTIC UL94V-0 BLACK

PIN : COPPER ALLOY

4.2 PART ③, ⑥ (EJECT MECHANISM ASSY)

PLASTIC : HIGH TEMPERATURE THERMOPLASTIC UL94V-0 BLACK

PLATE : STAINLESS

EMI CONTACT : COPPER ALLOY

⑤ -1 FINISH (PIN)

UNDER PLATING : 0.5 μ m MIN. NiCONTACT AREA : 0.076 μ m MIN. GOLDSOLDER TAIL : 2.5 μ m MIN. Sn-Pb.

⑤ -2 FINISH (PIN) (FOR -****LF)

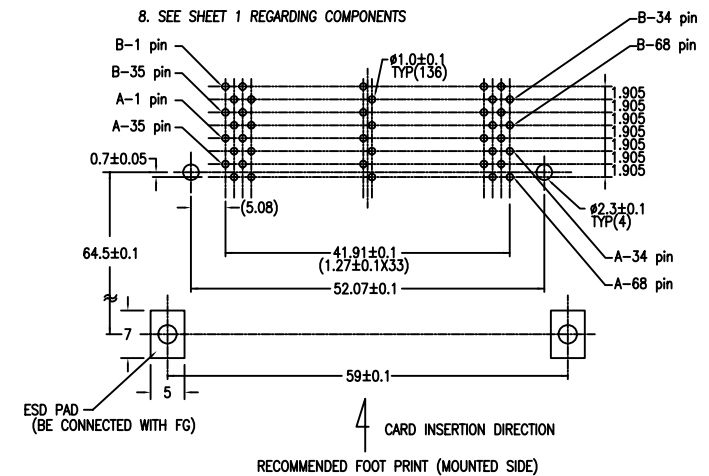
UNDER PLATING : 0.5 μ m MIN. NiCONTACT AREA : 0.076 μ m MIN. GOLDSOLDER TAIL : 2.5 μ m MIN. Sn.

6.

DIM "L"	4.25 \pm 0.1	3.5 \pm 0.1	5.0 \pm 0.1
PIN NUMBER	OTHERS	36.67	117.34 3651.68

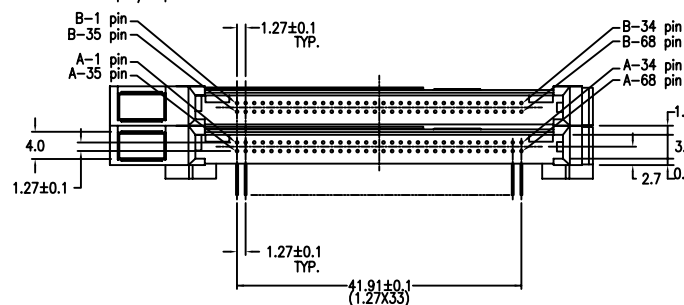
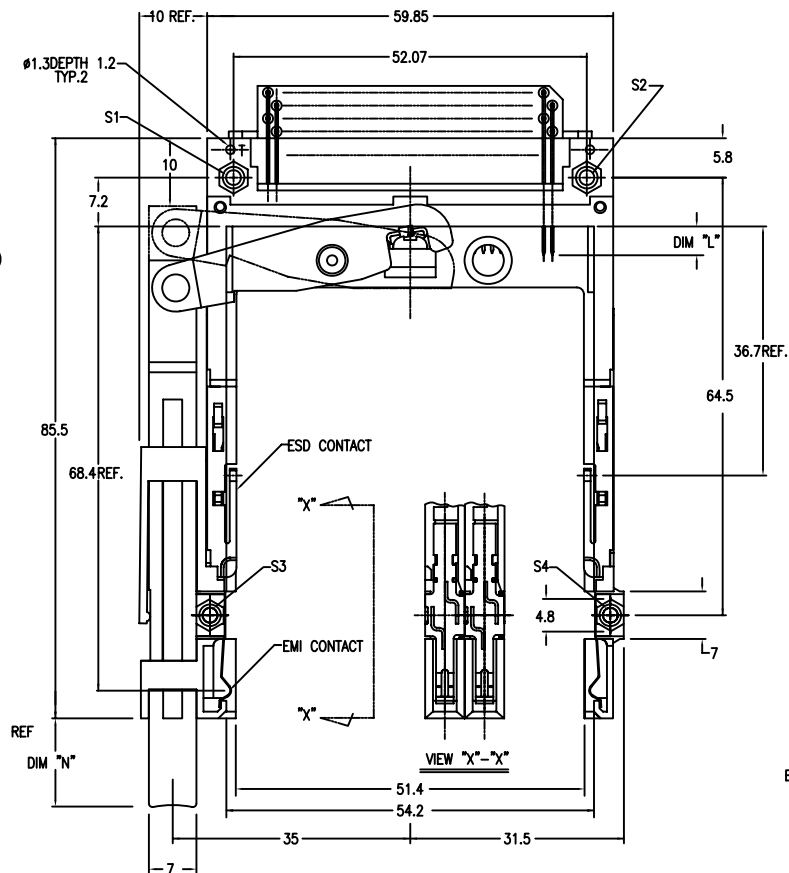
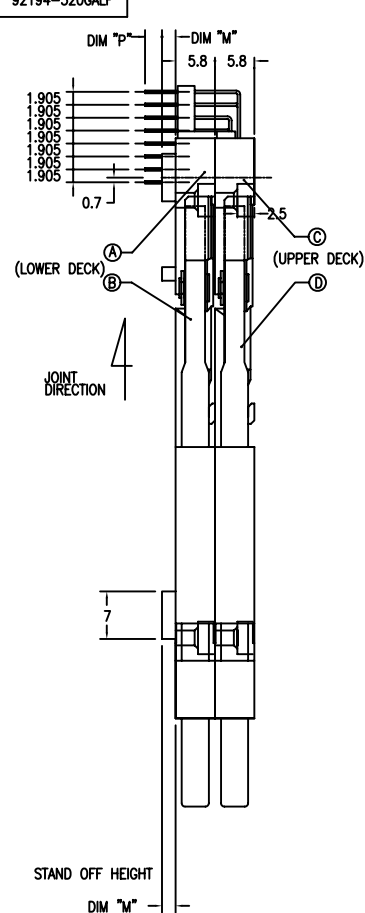
7. GENERAL TOLERANCE : \pm 0.3

8. SEE SHEET 1 REGARDING COMPONENTS



mat'l. code	surface	tolerance	projection	product family
	ISO1302	ISO1302 ISO1101		PCMCIA
ltr	ecn no	dr	date	title
K				68P DOUBLE EJECTOR HEADER ASSY
				FOR TYPE I/II/II
				dwg no
				sheet. 4 of 9
				size
				A4
				type
				Product Customer Drawing
sheet	revision			
index	sheet			

PRODUCT NO.	
92194-300CA	92194-300CALF
92194-320CA	92194-320CALF
92194-320FA	92194-320FALF
92194-320GALF	



NOTE

1. EJECT FORCE 3.5kg MAX.
2. ASSY PROCESS
 - 2.1 TO MOUNT PART ①, ② ON PWB WITH SCREW (S1,S2) AND SOLDER.
 - 2.2 TO JOINT PART ③, ④ INTO PART ①, ② THEN FIX PART ⑤, ⑥ WITH 2 SCREWS (S3,S4).
3. EJECT TRAVEL 8.0mm

④ **MATERIA**

- 4.1 PART (A), (C) (HEADER ASSY)
PLASTIC : HIGH TEMPERATURE THERMOPLASTIC UL94V-0 BLACK
PIN : COPPER ALLOY

4.2 PART ③ . ④ (EJECT MECHANISM ASSY)

- 4.2 PART ⑧, ⑨ (EJECT MECHANISM ASSY)
PLASTIC : HIGH TEMPERATURE THERMOPLASTIC UL94V-0 BLACK
PLATE : STAINLESS
EMI CONTACT : COPPER ALLOY

⑤ -1 FINISH (PIN)

- UNDER PLATING : 0.5 μ m MIN. Ni
CONTACT AREA : 0.076 μ m MIN. GOLD
SOLDER TAIL : 2.5 μ m MIN. Sn-Pb

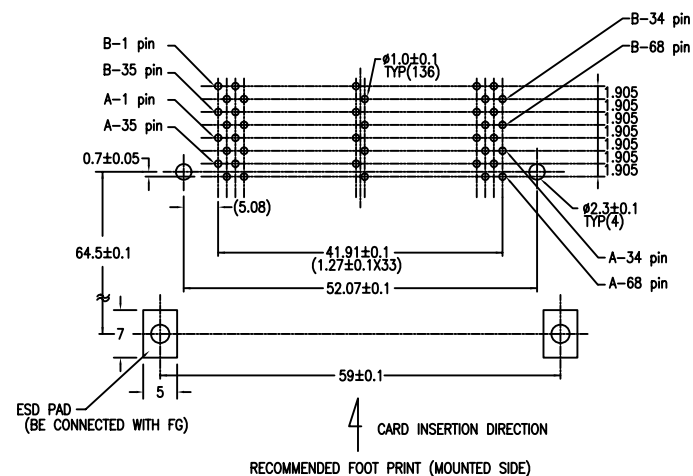
⑤ -2 FINISH (PIN) (FOR -*****LF)




- UNDER PLATING : 0.5 μ m MIN. Ni
CONTACT AREA : 0.076 μ m MIN. GOLD
SOLDER TAIL : 2.5 μ m MIN. Sn.

6.	DIM "L"	4.25±0.1	3.5±0.1	5.0±0.1
	PIN NUMBER	OTHERS	36.67	1.17, 34 35, 51, 68

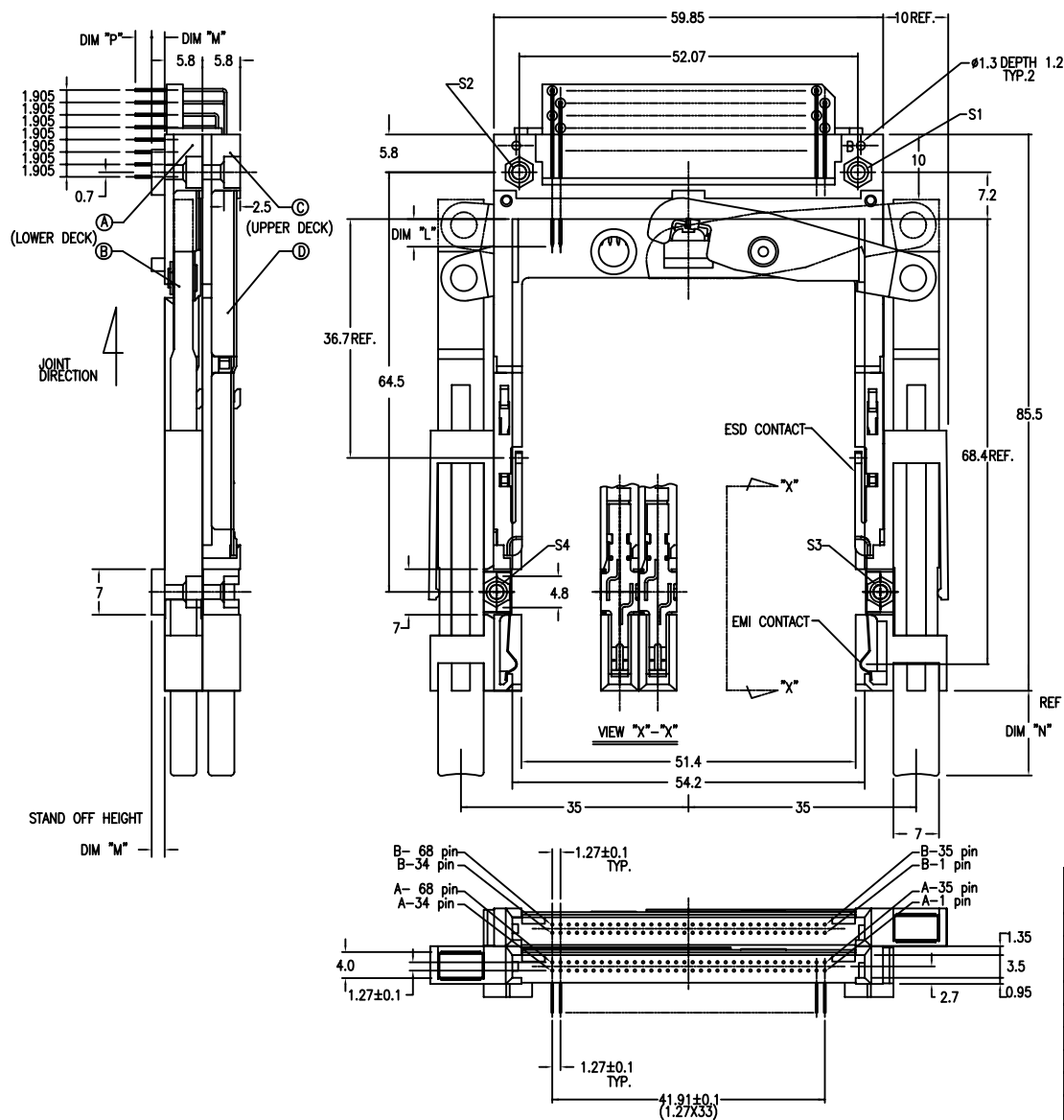
7. GENERAL TOLERANCE : ± 0.3

8. SEE SHEET 1 REGARDING COMPONENTS



mat'l. code					surface ISO1302 ✓		tolerance ISO1302 ISO1101		projection 		product family PCMCIA													
ltr ecn no dr date					tolerances unless otherwise specified					title 68P DOUBLE EJECTOR HEADER ASSY FOR TYPE I/II/II														
K					angles		linear 0.X±0.3 0.XX±0.13 0'±x' 0.XXX±0.05		MM 		scale 2:1													
					dr		M.HASEGAWO		06/17/05				dwg no					sheet. 5 of 9					size	
					enrg		M.HASEGAWO		06/17/05				92194					A4						
					chr		M.HASEGAWO		06/20/05															
					appd		M.HASEGAWO		06/20/05															
sheet index			revision sheet																					

PART NO.	
92194-500CA	92194-500CALF
92194-500FA	92194-500FALF
92194-520CA	92194-520CALF



NOTE

1. EJECT FORCE 3.5kg MAX.
2. ASSY PROCESS
 - 2.1 TO MOUNT PART ④, ⑤ ON PWB WITH SCREW (S1,S2) AND SOLDER.
 - 2.2 TO JOINT PART ③, ⑥ INTO PART ④ ⑤ THEN FIX PART ③, ⑥ WITH 2 SCREWS (S3,S4).
3. EJECT TRAVEL 8.0mm

④ MATERIAL

- 4.1 PART ①, ③ (HEADER ASSY)
PLASTIC : HIGH TEMPERATURE THERMOPLASTIC UL94V-0 BLACK
PIN : COPPER ALLOY

4.2 PART ② . ① (EJECT MECHANISM ASSY)

- 4.2 PART ④, ⑤ (EJECT MECHANISM ASSY)
PLASTIC : HIGH TEMPERATURE THERMOPLASTIC UL94V-0 BLACK
PLATE : STAINLESS
EMI CONTACT : COPPER ALLOY

⑤ -1 FINISH (PIN)

- UNDER PLATING : 0.5 μ m MIN. Ni
CONTACT AREA : 0.076 μ m MIN. GOLD
SOLDER TAIL : 2.5 μ m MIN. Sn-Pb.

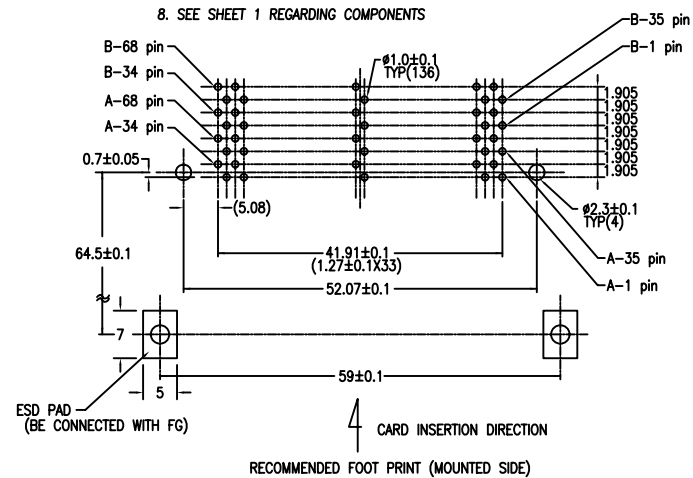
⑤ -2 FINISH (PIN)




- UNDER PLATING : 0.5 μ m MIN. Ni
CONTACT AREA : 0.076 μ m MIN. GOLD
SOLDER TAIL : 2.5 μ m MIN. Sn.

DIM "L"	4.25±0.1	3.5±0.1	5.0±0.1
PIN NUMBER	OTHERS	36.67	1.17 ³⁴ 35.51 ⁶⁸

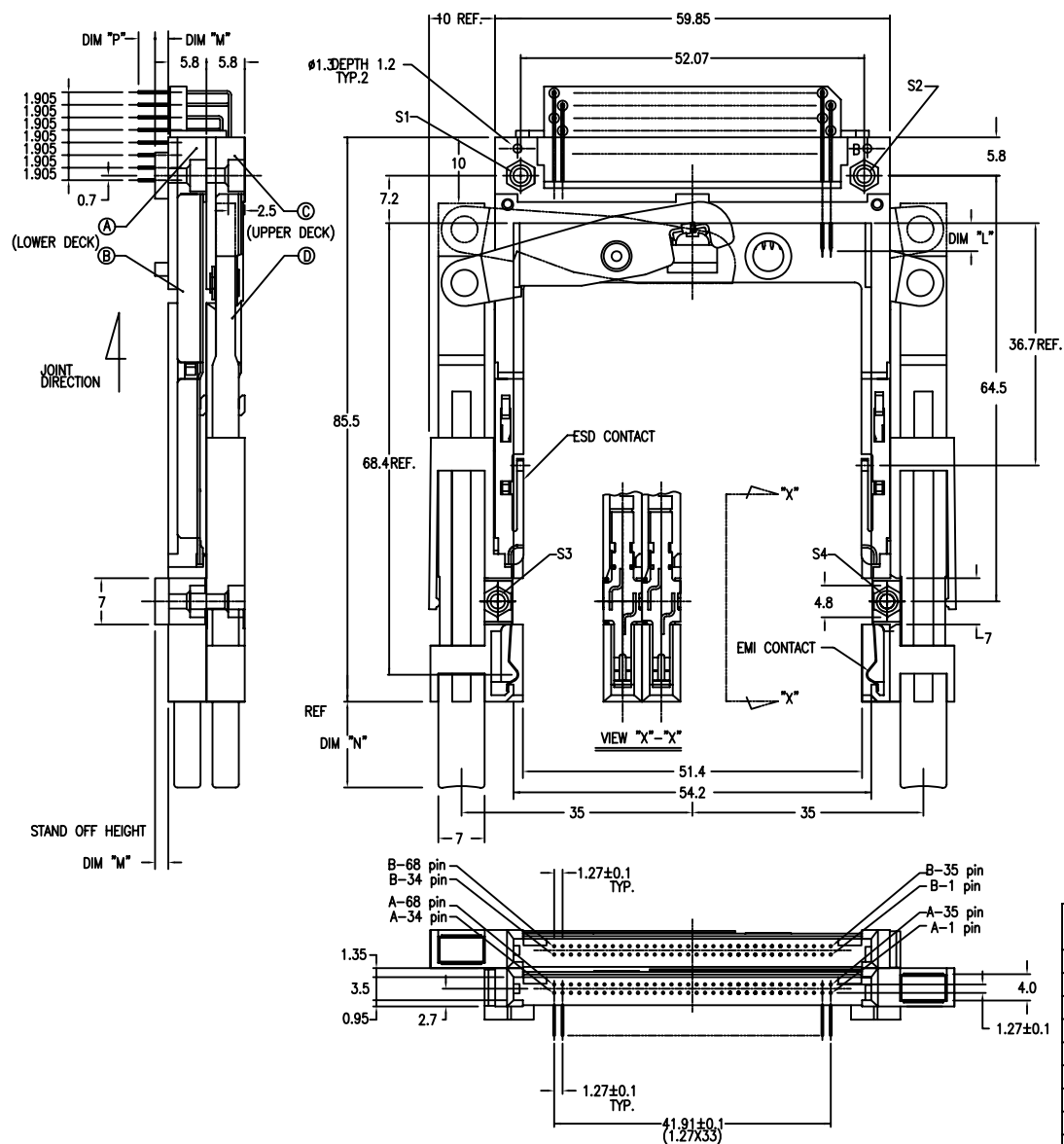
7. GENERAL TOLERANCE : ± 0.3

8. SEE SHEET 1 REGARDING COMPONENTS



mat'l. code				surface ISO1302 ✓		tolerance ISO1302 ISO1101		projection 		product family PCMCIA										
ltr	ecn	no	dr	date	tolerances unless otherwise specified						title									
k					angles		linear				68P DOUBLE EJECTOR HEADER ASSY									
							0.X±0.3													
							0.XX±0.13													
					0°±x'		0.XXX±0.05		scale 2:1		FOR TYPE I/II/II									
					dr	M.HASEGAWO	06/17/05				dwg no				sheet. 6 of 9				size	
					engr	M.HASEGAWO	06/17/05				92194				A4					
					chr	M.HASEGAWO	06/20/05													
					appd	M.HASEGAWO	06/20/05													
sheet index		revision sheet																		

PART NO.	
92194-600CA	92194-600CALF
92194-620CA	92194-620CALF



NOTE

1. EJECT FORCE 3.5kg MAX.
2. ASSY PROCESS
 - 2.1 TO MOUNT PART ④, ⑤ ON PWB WITH SCREW (S1,S2) AND SOLDER.
 - 2.2 TO JOINT PART ③ INTO PART ④, ⑤ THEN FIX PART ⑥, ⑦ WITH 2 SCREWS (S3,S4).
3. EJECT TRAVEL 8.0mm
- ④ MATERIAL
 - 4.1 PART ④, ⑤ (HEADER ASSY)
PLASTIC : HIGH TEMPERATURE THERMOPLASTIC UL94V-0 BLACK
PIN : COPPER ALLOY

- 4.2 PART ⑧, ⑩ (EJECT MECHANISM ASSY)
PLASTIC : HIGH TEMPERATURE THERMOPLASTIC UL94V-0 BLACK
PLATE : STAINLESS
EMI CONTACT : COPPER ALLOY

- ⑤ -1 FINISH (PIN)

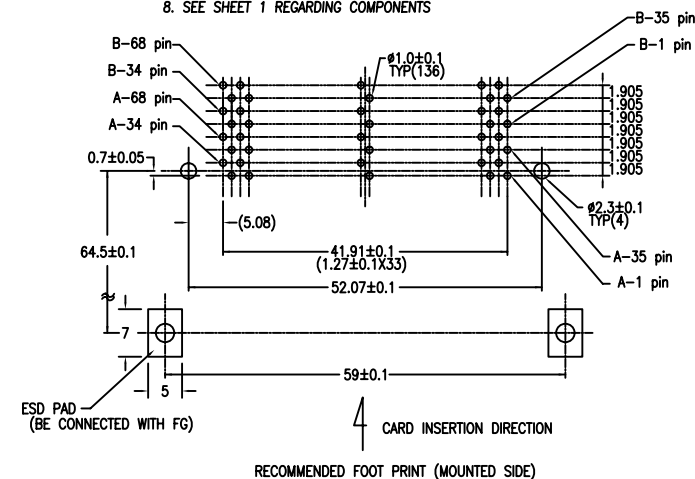
- UNDER PLATING : 0.5 μ m MIN. Ni
CONTACT AREA : 0.076 μ m MIN. GOLD
SOLDER TAIL : 2.5 μ m MIN. Sn-Pb.

- ⑤ -2 FINISH (PIN) (FOR SOLDER TAIL : 2.5 μ m MIN. Sn-Pb. -----LF)
UNDER PLATING : 0.5 μ m MIN. Ni
CONTACT AREA : 0.076 μ m MIN. GOLD
SOLDER TAIL : 2.5 μ m MIN. Sn.

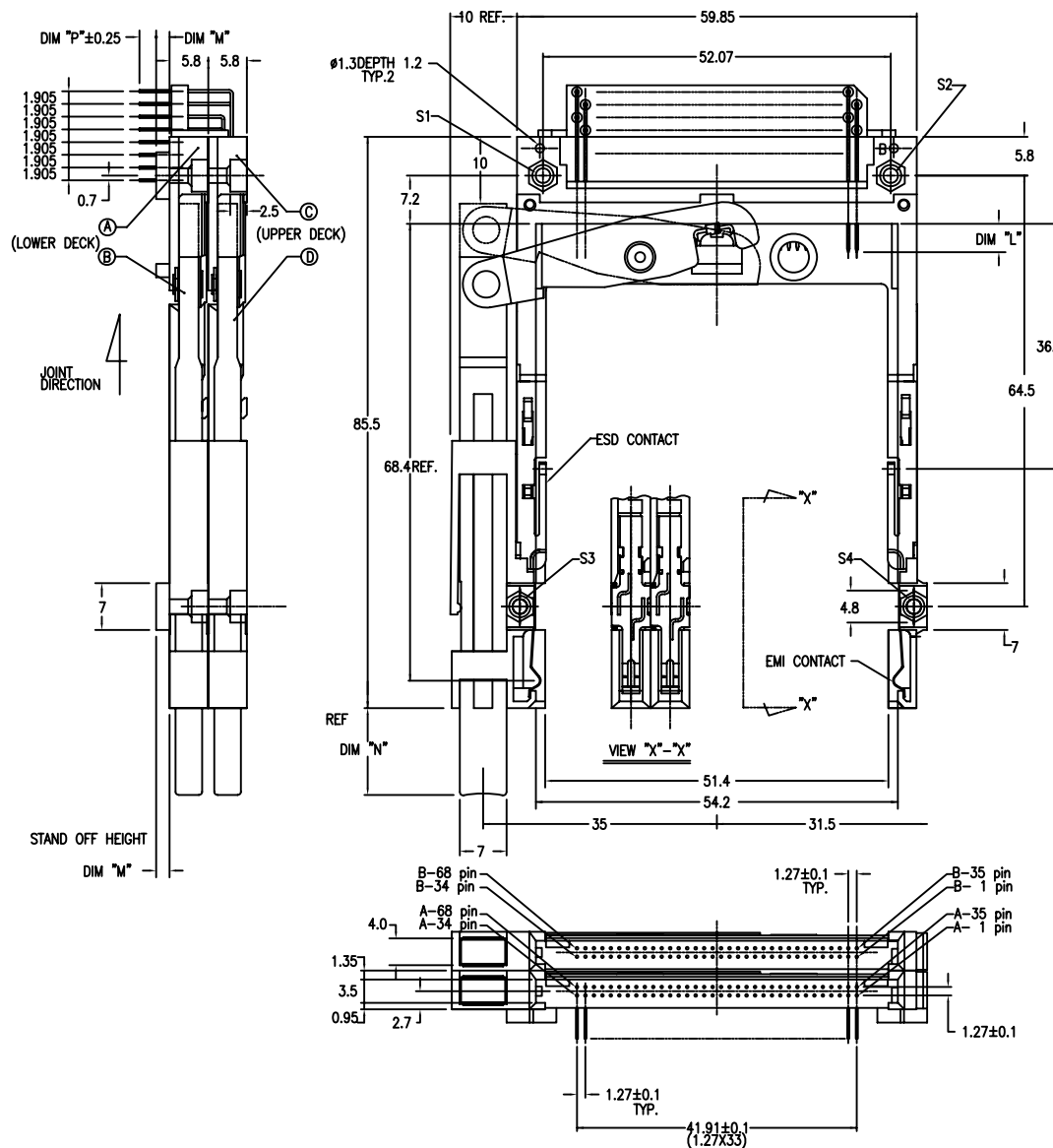
- | | | | | |
|----|------------|----------|---------|---|
| 6. | DIM "L" | 4.25±0.1 | 3.5±0.1 | 5.0±0.1 |
| | PIN NUMBER | OTHERS | 36.67 | 1.17 ³⁴
35.51 ³⁸ |

7. GENERAL TOLERANCE : ± 0.3

8. SEE SHEET 1 REGARDING COMPONENTS

[illegible]

PART NO.	
92194-700CA	92194-700CALF
92194-720CA	92194-720CALF



NOTE

1. EJECT FORCE 3.5kg MAX.
2. ASSY PROCESS
 - 2.1 TO MOUNT PART ④, ① ON PWB WITH SCREW (S1,S2) AND SOLDER.
 - 2.2 TO JOINT PART ④, ① INTO PART ② THEN FIX PART ④, ① WITH 2 SCREWS (S3,S4).
3. EJECT TRAVEL 8.0mm

④ MATERIAL
1.1 PART

- 4.1 PART (A), (C) (HEADER ASSY)
PLASTIC : HIGH TEMPERATURE THERMOPLASTIC UL94V-0 BLACK
PIN : COPPER ALLOY

4.2 PART ②, ③ (EJECT MECHANISM ASSY)

- PLASTIC : HIGH TEMPERATURE THERMOPLASTIC UL94V-0 BLACK
PLATE : STAINLESS
EMI CONTACT : COPPER ALLOY

⑤ -1 FINISH (PIN)

- UNDER PLATING : 0.5 μ m MIN. Ni
CONTACT AREA : 0.076 μ m MIN. GOLD
SOLDER TAIL : 2.5 μ m MIN. Sn-Pb.

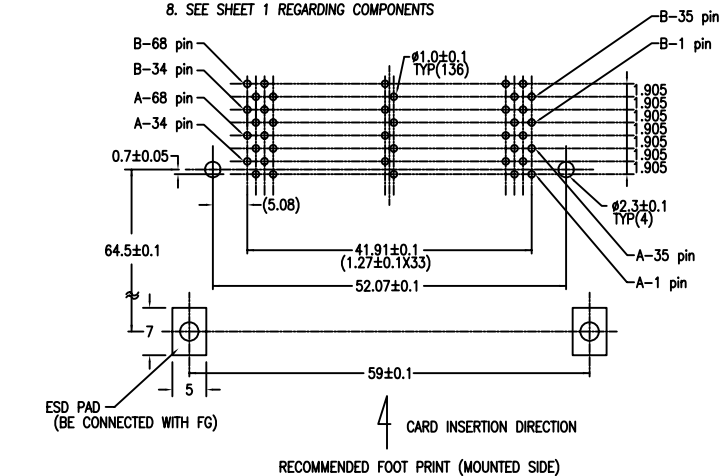
⑤ -2 FINISH (PIN) (FOR -*****LF)

- UNDER PLATING : 0.5 μ m MIN. Ni
CONTACT AREA : 0.076 μ m MIN. GOLD
SOLDER TAIL : 2.5 μ m MIN. Sn.

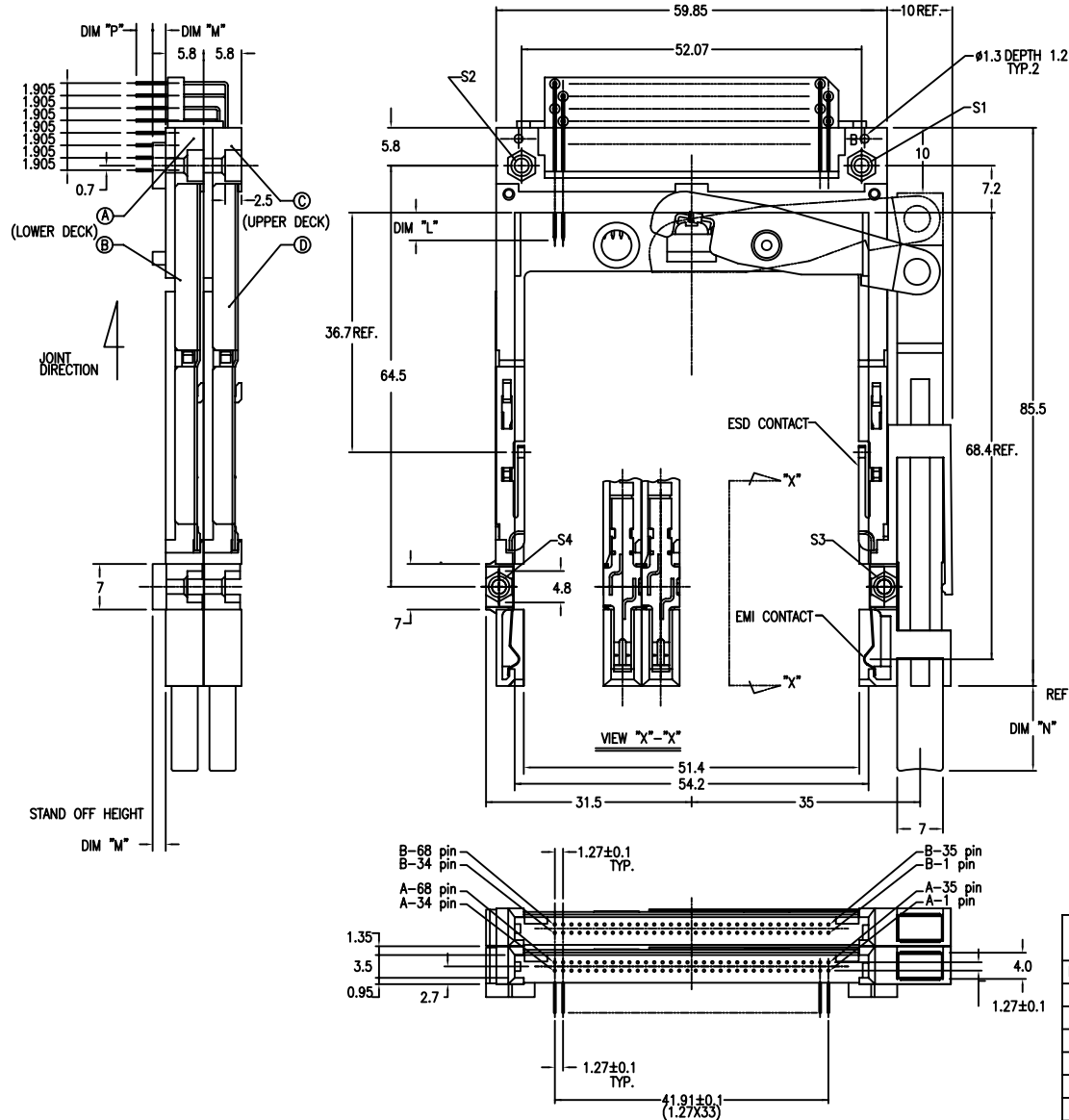
6.	DIM "L"	4.25±0.1	3.5±0.1	5.0±0.1
	PIN NUMBER	OTHERS	36.67	117.34 355.68

7. GENERAL TOLERANCE : ± 0.3

8. SEE SHEET 1 REGARDING COMPONENTS

[illegible]

PART NO.	
92194-800CA	92194-800CALF
92194-820CA	92194-820CALF



NOTE

- EJECT FORCE 3.5kg MAX.
- ASSY PROCESS
 - TO MOUNT PART ①, ② ON PWB WITH SCREW (S1,S2) AND SOLDER.
 - TO JOINT PART ③, ④ INTO PART ①, ② THEN FIX PART ③, ④ WITH 2 SCREWS (S3,S4).
- EJECT TRAVEL 8.0mm

④ MATERIAL

- PART ①, ② (HEADER ASSY)
PLASTIC : HIGH TEMPERATURE THERMOPLASTIC UL94V-0 BLACK
PIN : COPPER ALLOY

- PART ③, ④ (EJECT MECHANISM ASSY)
PLASTIC : HIGH TEMPERATURE THERMOPLASTIC UL94V-0 BLACK
PLATE : STAINLESS
EMI CONTACT : COPPER ALLOY

⑤ -1 FINISH (PIN)

- UNDER PLATING : 0.5 μ m MIN. Ni
CONTACT AREA : 0.076 μ m MIN. GOLD
SOLDER TAIL : 2.5 μ m MIN. Sn-Pb.

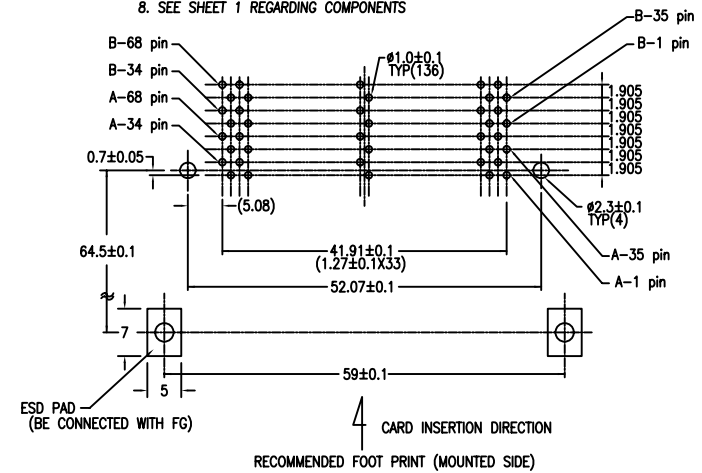
⑤ -2 FINISH (PIN) (FOR -*****LF)

- UNDER PLATING : 0.5 μ m MIN. Ni
CONTACT AREA : 0.076 μ m MIN. GOLD
SOLDER TAIL : 2.5 μ m MIN. Sn.

DIM "L"	4.25 \pm 0.1	3.5 \pm 0.1	5.0 \pm 0.1
PIN NUMBER	OTHERS	36.67	117.34
		36.67	36.67

- GENERAL TOLERANCE : \pm 0.3

- SEE SHEET 1 REGARDING COMPONENTS



mat'l. code	surface	tolerance	projection	product family
	ISO1302	ISO1302 ISO1101		PCMCIA
ltr	ecn no	dr	date	title
K				68P DOUBLE EJECTOR HEADER ASSY FOR TYPE I/II/III
				dwg no
				92194
				sheet. 9 of 9
				size
				A4
				type
				Product Customer Drawing
sheet	revision			
index	sheet			

Mouser Electronics

Authorized Distributor

Click to View Pricing, Inventory, Delivery & Lifecycle Information:

[FCI / Amphenol:](#)

[92194-500FALF](#) [92194-320CALF](#) [92194-000CALF](#) [92194-200CALF](#) [92194-220CALF](#) [92194-300CALF](#) [92194-700CALF](#) [92194-720CALF](#) [92194-800CALF](#)