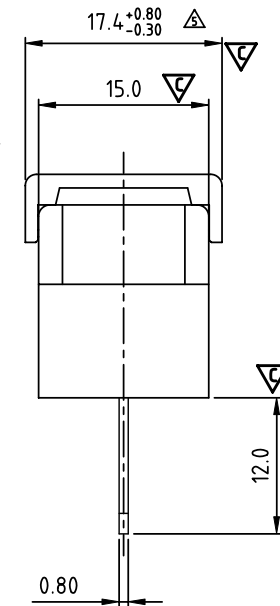


N=Number of contacts

Dimension A&B&C

DIM A	$N \times 10.0 + 3.5$
DIM B	$(N-1) \times 10.0$
DIM C	$(N+2) \times 10.0$

Poles	Tol.	Dim A&B&C
4p	± 0.20	
5-10p	± 0.30	
11-24p	± 0.40	
25-30p	± 0.50	



SIGN	DATE	DESCRIPTION	APPROVER
△	3/30'09	Structure changed	JODY
△	3/30'09	Temperature changed from -40 ~ 105°C to -40 ~ 115°C	JODY
△	11/13'12	Change the screw plating specification	Jacky
△	11/13'12	Change the dimensional tolerance	Jacky
△	08/25'14	The dimensional tolerance is changed from 17.4 ± 0.30 to $17.4^{+0.80}_{-0.30}$	Airy min

THIS IS CAD DRAWING, DO NOT REVISE MANUALLY!!!

MATERIALS ELECTRICAL

RATED VOLTAGE & CURRENT:

300 V, 20 A

WITHSTAND VOLTAGE:

AC 2000 V/Min

INSULATION RESISTANCE:

1000 MΩ OR MORE AT DC 500 V

OPERATING TEMPERATURE RANG:

△ -40 °C ~ +115 °C

SCREW TORQUE VALUE:

12Lb-In.

WIRE RANGE:

22 - 12 AWG

1) MOLDED PARTS:

POLYIMIDE 66, UL 94 V-0 BLACK

2) TERMINAL:

BRASS, 0.8t, Tin PLATED

△ 3) TERMINAL SCREWS:

STEEL, M3.5

4) COVER MATERIAL:

PC

APPROVAL:  us

Critical dimension: 

PART No.:

YK 603 xx 1 x x 00G

NO. OF POLES

04: 4 POLES

05: 5 POLES

06: 6 POLES

...

30: 30 POLES

G:RoHS compliant(lead<4%)
in copper alloy

MARK

0: "@" MARK

1: "ANY" MARK

TERMINAL & SCREW PLATED

0: TERMINAL & SCREW: G/F

△ 1: TERMINAL: G/F, SCREW: Zinc

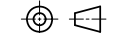
2: TERMINAL: Sn, SCREW: G/F

△ 3: TERMINAL: Sn, SCREW: Zinc

ANYTEK

CUSTOMER COPY

ALL RIGHTS RESERVED. REPRODUCTION OR ISSUE TO THIRD PARTIES IN ANY FORM WHATEVER IS NOT PERMITTED WITHOUT WRITTEN AUTHORITY FROM THE PROPRIETOR. PROPERTY OF ANYTEK TECHNOLOGY CO., LTD

TITLE	YK-603 With Flange&With Cover Series(4-30P)						
PART NO.	YK603xx1xx00G			DWG NO.	8YK0004-603		
APPROVED	CHECKED	DESIGNED	DRAWN	CUST NO.			
		Airy min 2014.08.25	Airy min 2014.08.25		UNIT: mm	Tolerance	
					SCALE: NONE	X. ±0.50	
						X.X ±0.30	
						X.XX ±0.10	
						X° ±1°	

SHEET: 01/01

REV.: E

Mouser Electronics

Authorized Distributor

Click to View Pricing, Inventory, Delivery & Lifecycle Information:

Amphenol:

<u>YK6030213000G</u>	<u>YK6030313000G</u>	<u>YK6030413000G</u>	<u>YK6030513000G</u>	<u>YK6030613000G</u>	<u>YK6030713000G</u>
<u>YK6030813000G</u>	<u>YK6030913000G</u>	<u>YK6031013000G</u>	<u>YK6031113000G</u>	<u>YK6031213000G</u>	<u>YK6031313000G</u>
<u>YK6031413000G</u>	<u>YK6031513000G</u>	<u>YK6031613000G</u>	<u>YK6031713000G</u>	<u>YK6031813000G</u>	<u>YK6031913000G</u>
<u>YK6032013000G</u>	<u>YK6032113000G</u>	<u>YK6032213000G</u>	<u>YK6032313000G</u>	<u>YK6032413000G</u>	<u>YK6032513000G</u>
<u>YK6032613000G</u>	<u>YK6032713000G</u>	<u>YK6032813000G</u>	<u>YK6032913000G</u>	<u>YK6033013000G</u>	