


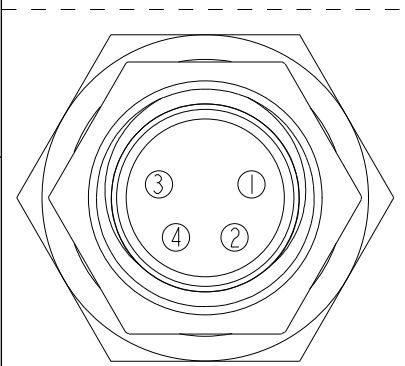
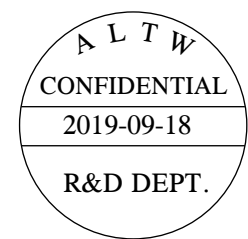
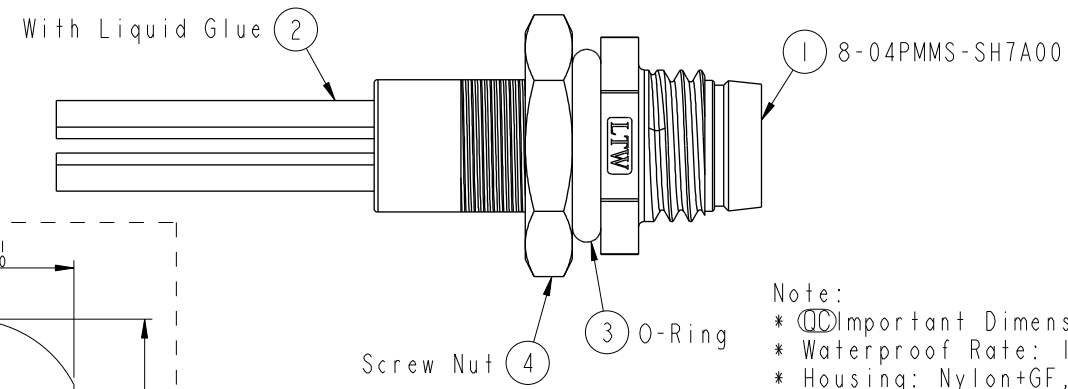
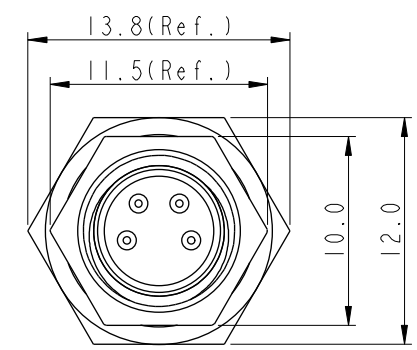
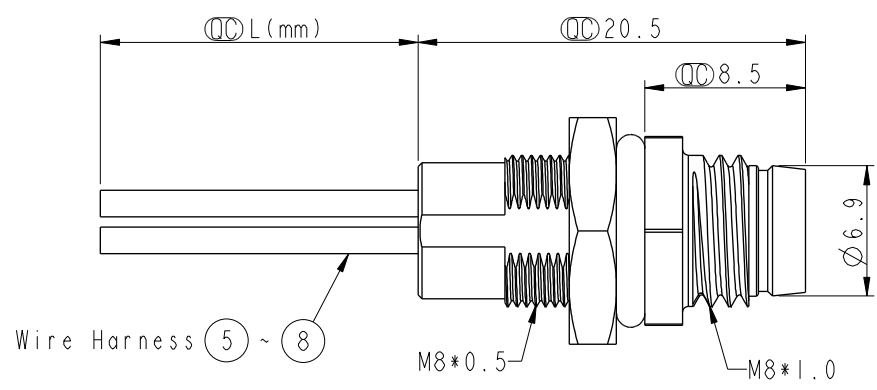
THIS DOCUMENT IS SUBJECT TO CHANGE WITHOUT NOTICE. IT IS CONFIDENTIAL AND A PROPERTY OF Amphenol LTW. DISCLOSURE TO THIRD PARTY HAS TO BE AUTHORIZED BY Amphenol LTW.

REV.	ECN NO.	DATE	SIGN	DESCRIPTION
B	LE31410397~99	2014-01-09	Tony_leng	Change Ball No. & Wire Length
C	E191630	2019-09-18	Ruru	Update Wire Tolarance

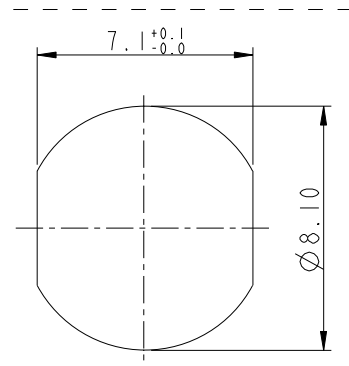
8-04PMMS-SH7AXX 

15:150mm
20:200mm
95:950mm
Cable Pitch Unit=50mm

A0:1000mm
A5:1500mm
Cable Pitch Unit=100mm
Wire Length (L):150~1500 mm

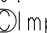


Pin Assignment
Front View



Recommended
Panel Cut-Out

4	Black	黑
3	Blue	藍
2	White	白
1	Brown	棕
Conn.	Wire Color	
	Pin Out	

Note:
*  Important Dimension.
* Waterproof Rate: IP67
* Housing: Nylon+GF, Black
* Male Pin: Copper Alloy, Gold Plated
* Shield: Zinc Alloy, Nickel Plated
* Nut: Copper Alloy, Nickel Plated
* O-Ring: EPDM, Black
* Wire Harness: UL1007, 24AWG
* For Panel Thickness Max 3.5mm
* Nut Torque: 4-6 kgf.cm
* Wire harness Tolerance: 150~300±15mm
301~1000±20mm
Over1000 ±50/-0mm

UNIT:mm				TITLE M12 Panel with wire harness		ITEM NO 8-04PMMS-SH7AXX		DRAWN BY Ruru		DATE 2019-09-18	
TOLERANCE .X ±0.25 .XX ±0.1 .XXX ±0.05 ANGLES ±1°		SCALE 1:1		SIZE A4		SHEET 1 OF 1		CHECKED BY Rita		DATE 2019-09-18	
REV. C		WC-REV. B.2		 Inspection item		CUSTOMER ALTW		APPROVED BY Max		DATE 2019-09-18	

Amphenol LTW
安費諾亮泰企業股份有限公司

Mouser Electronics

Authorized Distributor

Click to View Pricing, Inventory, Delivery & Lifecycle Information:

[Amphenol:](#)

[8-04PMMS-SH7A30](#) [8-04PMMS-SH7A50](#) [8-04PMMS-SH7AA5](#) [8-04PMMS-SH7A15](#) [8-04PMMS-SH7AA0](#)