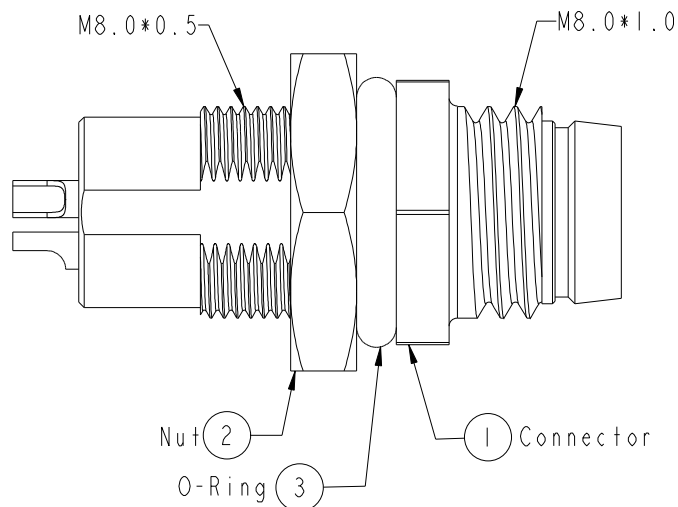
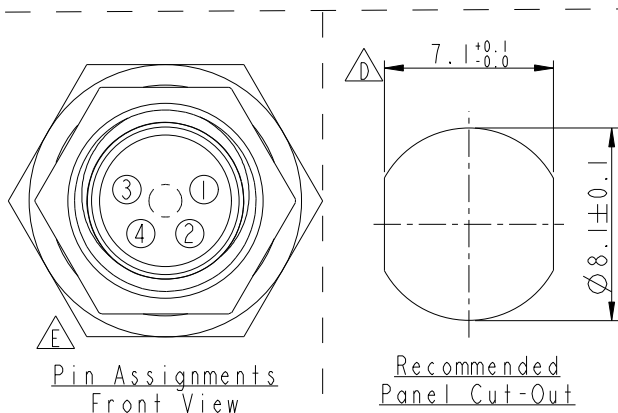
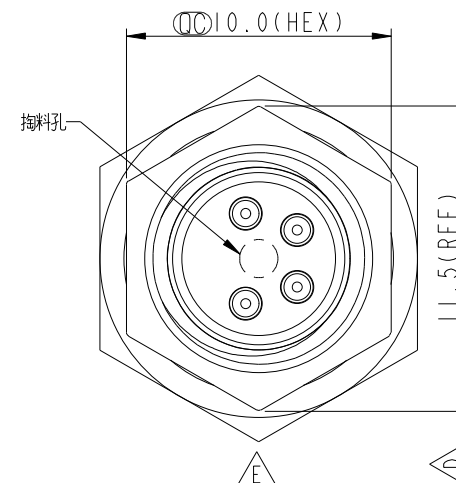
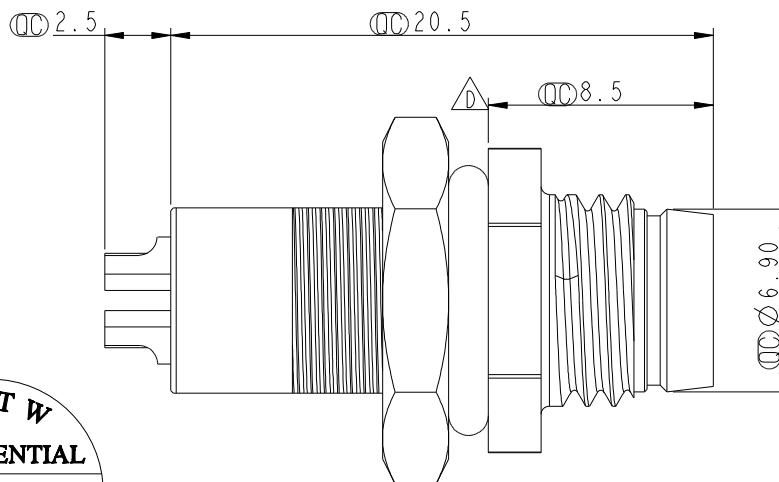
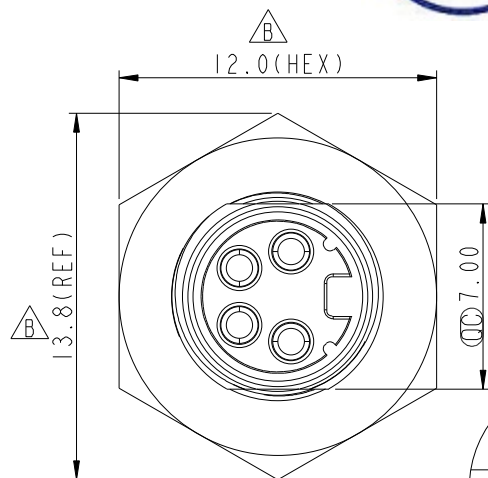


REV.	ECN NO.	DATE	SIGN	DESCRIPTION
B	LEN-750250	2007/05/26	Jason	Change Dimension of Nut
C	LEN-7A0179	2007/09/29	Myrdal	Added Note
D	LEN-910191	2009/01/07	Ivan Lin	Change rev. to ECN note
E	LEN1460128	2014/06/10	Jinhai	Change Drawing



△ Note:

- *  Important Dimension.
- * Waterproof Rate: IP67
- * Housing: Nylon+GF, Black
- * Male Pin: Copper Alloy, Gold Plated
- * Shield: Zinc Alloy, Nickel Plated
- *  Nut: Copper Alloy, Nickel Plated
- * O-Ring: EPDM, Black
- * For Panel Thickness Max 3.5mm
- *  Nut Torque: 4-6 kgf.cm

UNIT:mm				TITLE  M8 Conn Panel Screw 4P M Conn M Pin			Amphenol LTW 安費諾亮泰企業股份有限公司			ITEM NO 8-04PMMS-SH7002		DRAWN BY Jinhai		DATE 2014/06/10		
TOLERANCE .X ±0.25 .XX ±0.1 .XXX ±0.05 ANGLES ±				SCALE 7:2		SIZE A4				SHEET 1 OF 1		DWG NO 8-04PMMS-SH7002		CHECKED BY Tom-Gu		DATE 2014/06/10
				REV. E		WC-REV. A.3		QC: Inspection item			CUSTOMER ALTW		APPROVED BY Jerry		DATE 2014/06/10	

Mouser Electronics

Authorized Distributor

Click to View Pricing, Inventory, Delivery & Lifecycle Information:

[Amphenol:](#)

[8-04PMMS-SH7002](#)