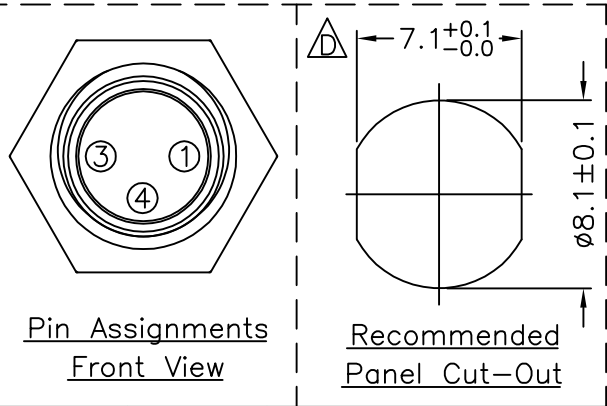
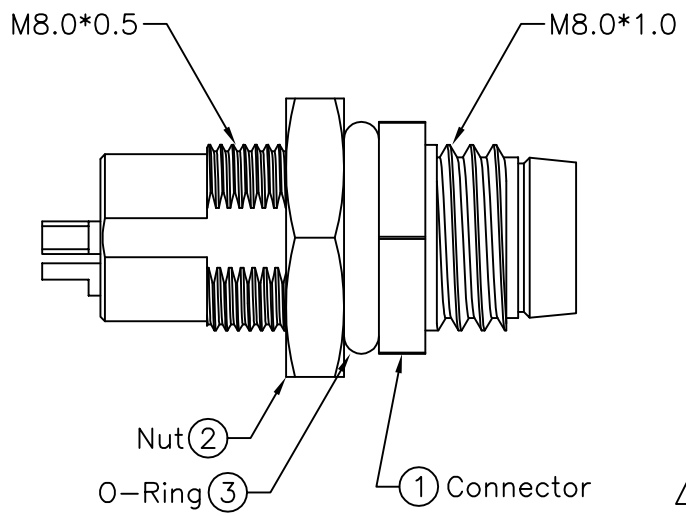
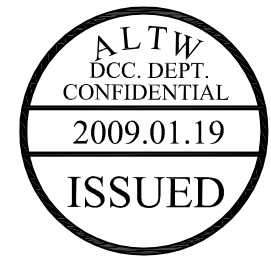
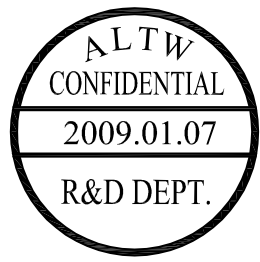
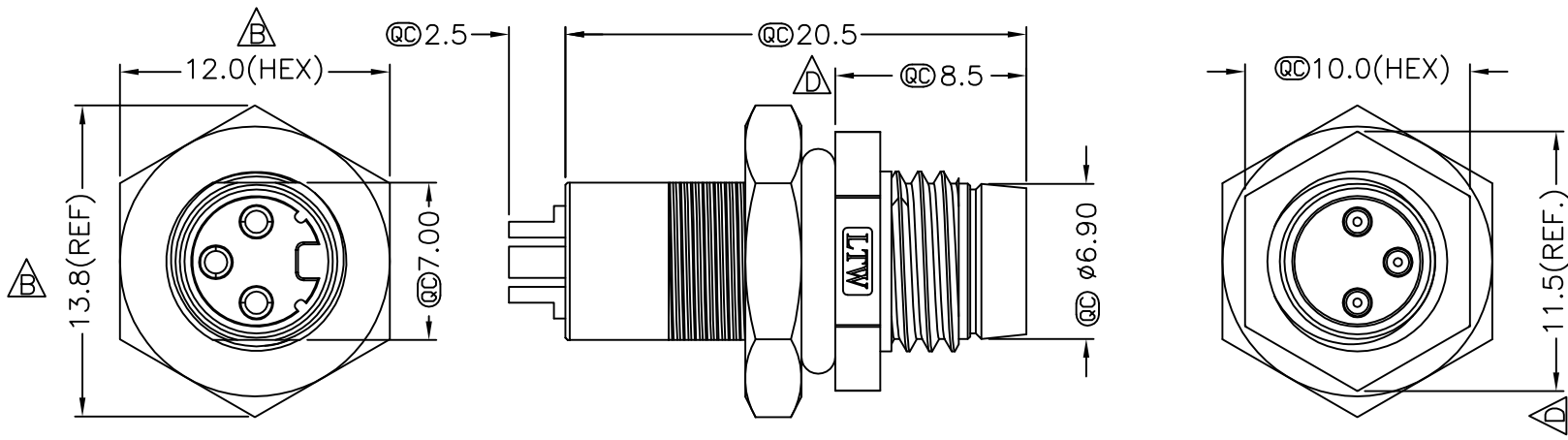


REV.	ECN NO.	DATE	SIGN	DESCRIPTION
B	LEN-750245	2007/05/26	Jason	Change Dimension of Nut
C	LEN-7A0170	2007/09/29	Myrdal	Added Note
D	LEN-910182	2009/01/07	Ivan Lin	Change rev. to ECN note

F
E
D
C
B
A



- Note:
- * QC Important Dimension.
 - * Waterproof Rate: IP67
 - * Housing: Black, Nylon+GF
 - * Male Pin: Copper Alloy, Gold Plated
 - * Shield: Zinc Alloy, Nickel Plated
 - * Nut: Copper Alloy, Nickel Plated
 - * O-Ring: Black, EPDM
 - * For Panel Thickness Max 3.5mm
 - * Nut Torque: 4-6 kgf.cm

A	UNIT:mm			TITLE M8 Conn Panel Screw 3P M Conn M Pin			Amphenol LTW 安費諾亮泰企業股份有限公司			ITEM NO 8-03PMMS-SH7001		DRAWN BY Ivan Lin		DATE 2009/01/07					
	TOLERANCE			SCALE Free		SHEET 1 OF 1				DWG NO 8-03PMMS-SH7001		CHECKED BY Tommy Hom		DATE 2009/01/07					
	.X .XX .XXX ANGLES		±0.25 ±0.1 ±0.05 ±1°	REV. D		SIZE A4				QC :Inspection Item		CUSTOMER ALTW		APPROVED BY Luke Chang		DATE 2009/01/07			
	1		2		3					4		5		6		7		8 FMW0702-01-01A2	

THIS DOCUMENT IS SUBJECT TO CHANGE WITHOUT NOTICE. IT IS CONFIDENTIAL AND A PROPERTY OF Amphenol LTW. DISCLOSURE TO THIRD PARTY HAS TO BE AUTHORIZED BY Amphenol LTW.

Mouser Electronics

Authorized Distributor

Click to View Pricing, Inventory, Delivery & Lifecycle Information:

[Amphenol:](#)

[8-03PMMS-SH7001](#)