



SIGN	DATE	DESCRIPTION	APPROVER
△	8/07'06	Added VDE standard	梁仁松
△	2010.11.29	The tolerance is changed	Jacke
THIS IS CAD DRAWING, DO NOT REVISE MANUALLY!!!			

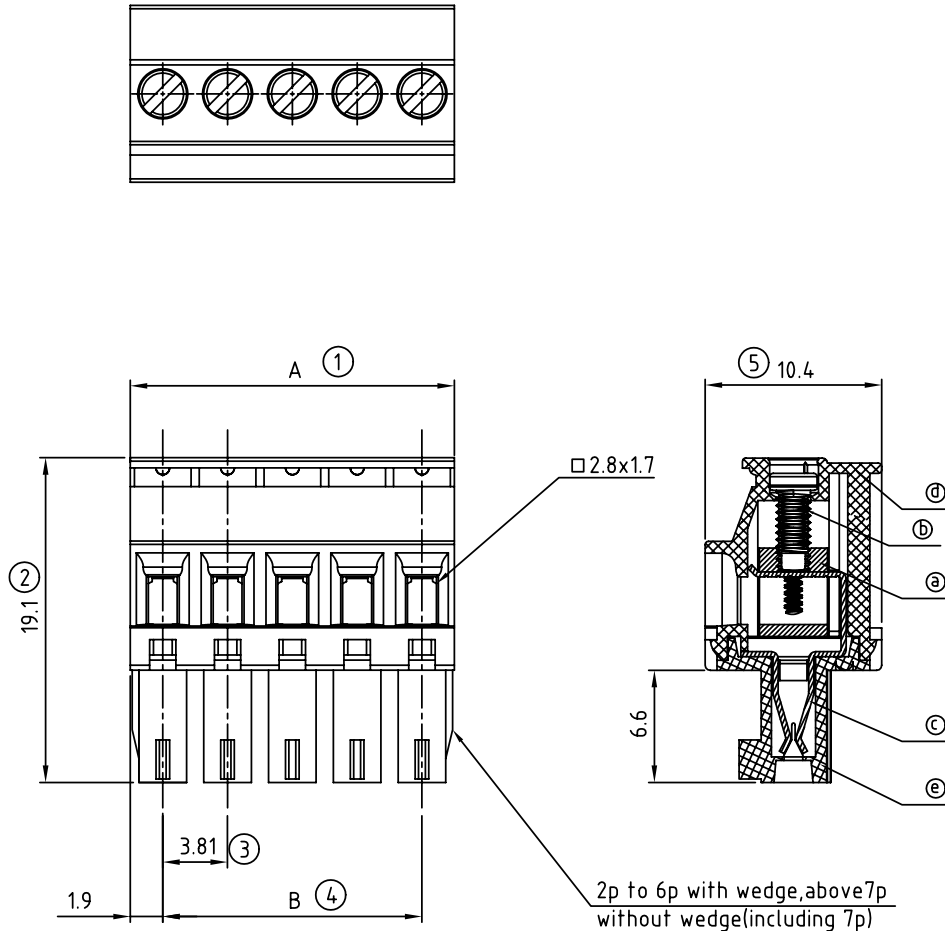
Material

- Item① Clamp: Brass(CuZn),Nickel plated
- Item② Terminal screw: Steel Zinc plating “-” slot type
- Item③ Female contact: PhBz, Tin plated
- Item④ Terminal (housing): Thermoplastic (UL94V-0)
- Item⑤ Terminal (cover): Thermoplastic (UL94V-0)

△ Electrical cULus/VDE

- Voltage rating: 300VAC/300VAC
- Current rating: 8A/10A
- Wire range: 1.5mm²
- Solid wire(AWG): 16-28
- Stranded wire(AWG): 16-28
- Torque: 1.7Lb-In./0.2Nm
- Screw: M2
- Wire strip length: 6-7mm
- Withstanding Voltage: 1.6KV/2.5KV
- Operating temperature: -40°C to +115°C
- Safety approval:  

TS xx 3 1 x A xxxx G			
No. OF POLES			RoHS pb<40 , 000ppm
02: 2 POLES			
:			
:			
24: 24 POLES			
	Color		0000 Standard @ Logo
	0 Black (RAL9005)		000A Standard ANY Logo
	2 Red (RAL3001/D)		Any special item by
	3 Orange(RAL2011/P)		customer request,
	4 Yellow(RAL1018/A)		please contact sales
	5 Green(RAL6018/T)		department.
	6 Blue (RAL5015/A)		
	8 Grey(RAL7035/D)		



DIMENSION
N = Number of contacts

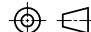
A	NX3.81
B	(N-1)X3.81

Poles	Tolerance
2p-6p	±0.15
7p-12p	±0.20
13p-16p	±0.25
17p-24p	±0.30

ANYTEK

CUSTOMER COPY

ALL RIGHTS RESERVED. REPRODUCTION OR ISSUE TO THIRD PARTIES IN ANY FORM WHATSOEVER IS NOT PERMITTED WITHOUT WRITTEN AUTHORITY FROM THE PROPRIETOR. PROPERTY OF ANYTEK TECHNOLOGY CO., LTD

TITLE		TS-3.81mm Series Without flange (W/latching hooks on the wire entry side)							
PART NO.		TSxx31xAxxxxG			DWG NO.		8TS0301		
APPROVED		CHECKED	DESIGNED	DRAWN	CUST NO.		Tolerance		
			Jacke 2010.11.29	Marvin 2006.08.07			X.		±0.50
							X.X		±0.30
					X.XX		±0.10		
					X°		±1°		

Mouser Electronics

Authorized Distributor

Click to View Pricing, Inventory, Delivery & Lifecycle Information:

Amphenol:

20020008-D031B01LF	TS03315A00J0G	TS02315A0000G	TS04315A0000G	TS05315A0000G	TS06315A0000G
TS07315A0000G	TS08315A0000G	TS09315A0000G	TS10315A0000G	TS11315A0000G	TS12315A0000G
TS13315A0000G	TS14315A0000G	TS15315A0000G	TS16315A0000G	TS17315A0000G	TS18315A0000G
TS19315A0000G	TS20315A0000G	TS21315A0000G	TS22315A0000G	TS23315A0000G	TS24315A0000G
TS18318A0000G	TS19310A0000G	TS12310A0000G	TS11310A0000G	TS16310A0000G	TS17310A0000G
TS12318A0000G	TS14310A0000G	TS24318A0000G	TS21318A0000G	TS14318A0000G	TS24310A0000G
TS19318A0000G	TS22318A0000G	TS17318A0000G	TS20318A0000G	TS15310A0000G	TS20310A0000G
TS23310A0000G	TS21310A0000G	TS22310A0000G	TS04310A0000G	TS07310A0000G	TS10318A0000G
TS15318A0000G	TS23318A0000G	TS03318A0000G	TS08310A0000G	TS16318A0000G	TS18310A0000G
TS07318A0000G	TS02318A0000G	TS03310A0000G	TS11318A0000G	TS02310A0000G	TS05318A0000G
TS08318A0000G	TS09310A0000G	TS09318A0000G	TS05310A0000G	TS06318A0000G	TS04318A0000G
TS06310A0000G	TS10310A0000G	TS13318A0000G	TS13310A0000G		