

PRODUCT NUMBER

75869-YXXLF

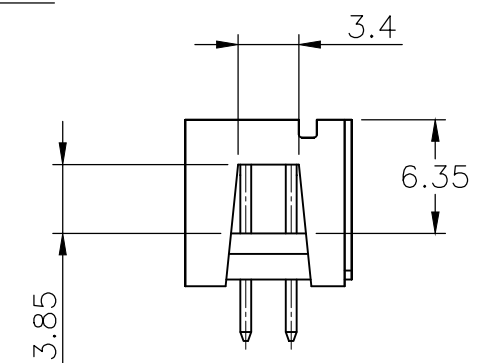
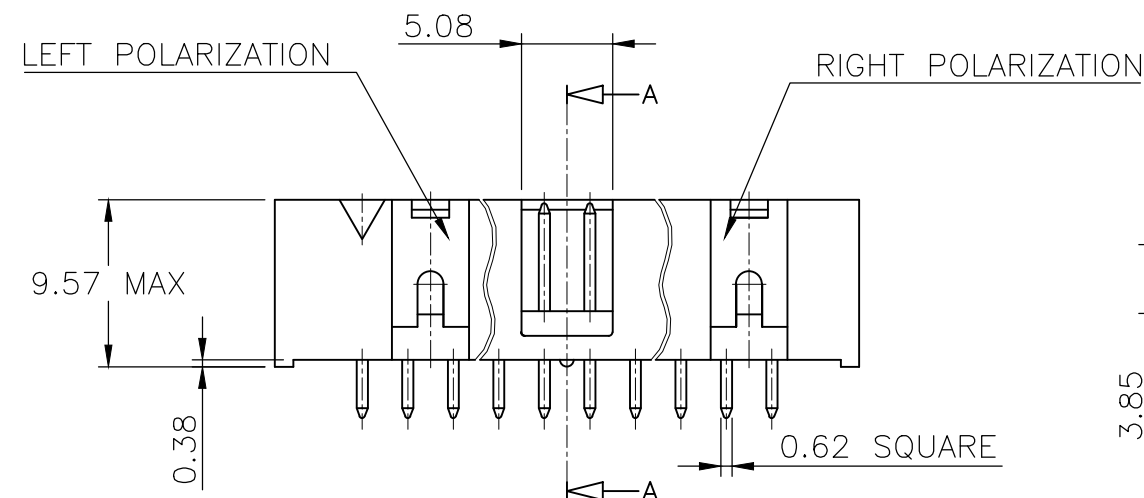
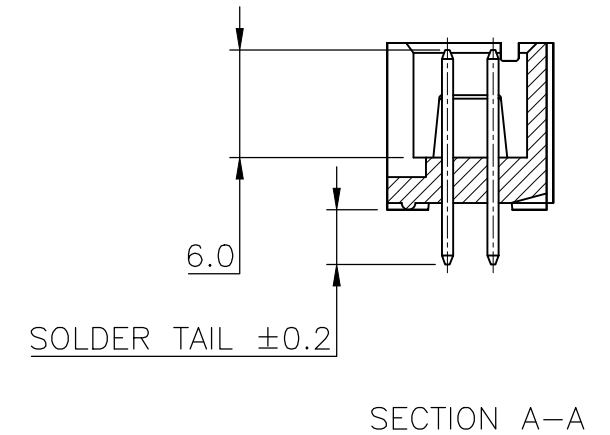
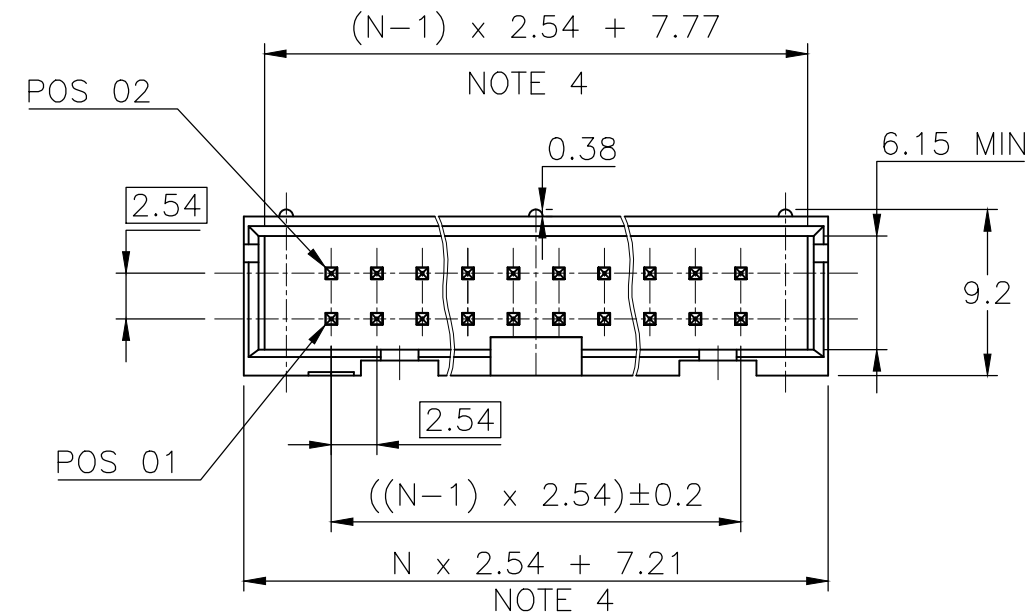
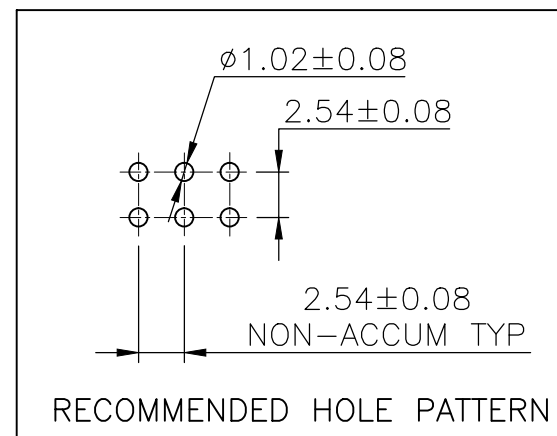
RoHS COMPATIBLE, SEE NOTE 5


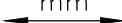

PIN STYLE, SEE SHEET 2 & 3.

PLATING SEE SHEET 2 & 3.

NOTES:

- 1 - HOUSING MAT'L : GLASS FILLED THERMOPLASTIC. UL94V-0 COLOR: BLUE PART MEETS WITH GWT (725°C;960°C)
- 2 - PIN MATERIAL : PHOSPHOR BRONZE
- 3 - PACKAGING :
POLYBAGS FROM 2X02 TO 2X04 POSITIONS
TUBE FROM 2X05 TO 2X32 POSITIONS
- 4 - TO DETERMINE DIMENSIONS :
N = NUMBER OF POSITIONS PER ROW
EXAMPLE : 8 POS $N \times 2.54 = 20.32\text{mm}$
- 5 - RoHS COMPATIBLE PRODUCT SPECIFICATIONS
 - a - PLATING:
- "LF" MEANS THE PRODUCT IS LEAD-FREE, $2\mu\text{m}$ MINIMUM MATTE TIN OVER $1.27\mu\text{m}$ MINIMUM NICKEL UNDERPLATE.
 - b - MANUFACTURING PROCESS COMPATIBILITY
- THE HOUSING WILL WITHSTAND EXPOSURE TO $260^\circ\text{C} \pm 5^\circ\text{C}$ SOLDER BATH TEMPERATURE FOR 5 SECONDS IN A WAVE SOLDER APPLICATION WITH A 1.6mm MIN THICK CIRCUIT BOARD.
 - c - LABELLING:
- MEETS PACKAGING SPECS AS PER GS-14-920
 - d - LEGAL STATEMENT: SEE GS-47-0004



mat'l. code SEE NOTES				surface ISO 1302 ✓			tolerance ISO 406 ISO 1101			projection 		product family QUICKIE			
ltr	ecn no	dr	date	tolerances unless otherwise specified					mm		title SHR.LP.HEADER STR DR TMT				
BK	F12-0086	JCO	12.07.17	angles	linear	.X ±0.3		scale 2.5:1							
BL	F12-0805	LMU	12.10.25			.XX ±0.13									
BM	B-18120	LMU	14.07.10			.XXX ±0.05									
BN	B-19070	LMU	14.10.15	dr	D.LE		01.01.24				dwg no		sheet 1 of 3		size
BP	B-19091	LMU	14.10.16	engr	JM.C		01.01.24				75869				A3
BR	B-20087	AMA	15.01.26	chr	JF.N		01.01.24								
				appd	JM.C		01.01.24								
sheet index		revision		BR	BE	K					type CUSTOMER Drawing				
		sheet		1	2	3									

1

2 3

4

5

6

STANDARD APPLICATION

PIN STYLE	NUMBER OF POSITIONS	SOLDER TAIL REF	LEFT POLARIZATION	RIGHT POLARIZATION
30	2 x 2	3.05	NO	NO
31	2 x 3	3.05	NO	NO
32	2 x 4	3.05	NO	NO
01	2 x 5	3.05	NO	YES
02	2 x 7	3.05	NO	YES
03	2 x 8	3.05	YES	YES
04	2 x 10	3.05	YES	YES
05	2 x 13	3.05	YES	YES
33	2 x 15	3.05	YES	YES
06	2 x 17	3.05	YES	YES
07	2 x 20	3.05	YES	YES
08	2 x 25	3.05	YES	YES
09	2 x 30	3.05	YES	YES
10	2 x 32	3.05	YES	YES

PLATING :

1 = 0.76μm GOLD/GXT
(PdNi WITH GOLD FLASH) ON CONTACT AREA
2μm MIN MATTE TIN ON TAIL

2 = 2μm TIN MIN FULL PLATED

3 = 0.38μm GOLD/GXT
(PdNi WITH GOLD FLASH) ON CONTACT AREA
2μm MIN MATTE TIN ON TAIL

UNDERPLATE : 1.27μm Ni MIN

mat'l. code				surface	tolerance	projection	product family
				ISO 1302	ISO 406 ISO 1101		QUICKIE
ltr	ecn no	dr	date	tolerances unless otherwise specified			title
BC	F08-0137	LMU	08.03.10	angles	linear	mm	SHR.LP.HEADER
BD	F08-0146	YOV	08.04.11				STR DR TMT
BE	B-19091	LMU	14.10.16			scale N/A	
				dr	D.LE	01.01.24	dwg no
AY	F04-0389	JCO	04.12.22	enrg	JM.C	01.01.24	sheet 2 of - size
BA	F06-0229	LMU	06.07.18	chr	JF.N	01.01.24	75869 A3
BB	F07-0198	LMU	07.05.30	appd	JM.C	01.01.24	type
sheet	revision						CUSTOMER Drawing
index	sheet						

APPLICATION SPECIFIC

PIN STYLE	NUMBER OF POSITIONS	SOLDER TAIL REF	PIN MISSING	LEFT POLARIZATION	RIGHT POLARIZATION
65	2x02	4.10		NO	NO
44	2x03	3.05	PIN 2	NO	NO
40	2x03	3.05	PIN 6	NO	NO
51	2x03	7.60		NO	NO
41	2x04	3.05	PIN 1	NO	NO
55	2x04	3.05	PIN 8	NO	NO
64	2x04	4.10		NO	YES
59	2x05	3.05	PIN 1,2,9,10	NO	YES
60	2x05	3.05	PIN 9	NO	YES
37	2x07	3.05	PIN 1	NO	YES
13	2x07	3.05	PIN 5	NO	YES
46	2x07	3.05	PIN 6	NO	YES
12	2x07	3.05	PIN 7	NO	YES
57	2x07	3.05	PIN 12	NO	YES
11	2x07	3.05	PIN 13	NO	YES
56	2x07	3.05	PIN 14	NO	YES
43	2x08	3.05	PIN 6 & 7	YES	YES
38	2x10	3.05	PIN 2	YES	YES
34	2x10	3.05	PIN 15	YES	YES
58	2x10	3.05	PIN 18	YES	YES
63	2x10	7.60		YES	YES
35	2x13	3.05	PIN 26	YES	YES
25	2x13	7.60		YES	YES
54	2x15	7.60		YES	YES
19	2x15	4.10		YES	YES
17	2x17	3.05	PIN 3	YES	YES
39	2x17	3.05	PIN 5	YES	YES
26	2x17	7.60		YES	YES
15	2x20	3.05	PIN 8	YES	YES
16	2x20	3.05	PIN 17	YES	YES
18	2x20	3.05	PIN 20	YES	YES
36	2x20	3.05	PIN 37	YES	YES
45	2x20	3.05	PIN 25,27,28	YES	YES
27	2x20	7.60		YES	YES
42	2x25	3.05	PIN 25	YES	YES
28	2x25	7.60		YES	YES
62	2x25	4.10		YES	YES


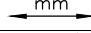

PLATING :

1 = 0.76µm GOLD/GXT
(PdNi WITH GOLD FLASH) ON CONTACT AREA
2µm MIN MATTE TIN ON TAIL

2 = 2µm TIN MIN FULL PLATED

3 = 0.38µm GOLD/GXT
(PdNi WITH GOLD FLASH) ON CONTACT AREA
2µm MIN MATTE TIN ON TAIL

UNDERPLATE : 1.27µm Ni MIN

mat'l. code				surface ISO 1302 <input checked="" type="checkbox"/> ISO 406 ISO 1101			projection 	product family QUICKIE	
ltr	ecn no	dr	date	tolerances unless otherwise specified				title SHR.LP.HEADER STR DR TMT	
H	B-18120	LMU	14.07.10	angles	linear				
J	B-19091	LMU	14.10.16				scale N/A		
K	B-20087	AMA	15.01.26						
				dr	MULIN.L	02.01.29			
E	F08-0146	YOV	08.04.11	enr	COMPAGNON.J	02.01.29	dwg no 75869		sheet 3 of - size A3
F	F10-0217	LMU	10.09.16	chr	NOTTEAU.JF	02.01.29			
G	F12-0086	JCO	12.07.17	appd	JM.C	02.01.29	type CUSTOMER Drawing		
sheet index	revision sheet								

Mouser Electronics

Authorized Distributor

Click to View Pricing, Inventory, Delivery & Lifecycle Information:

[FCI / Amphenol:](#)

[75869-005](#) [79839-001LF](#) [79839-002LF](#) [75869-118](#) [75869-313LF](#) [75869-160LF](#)