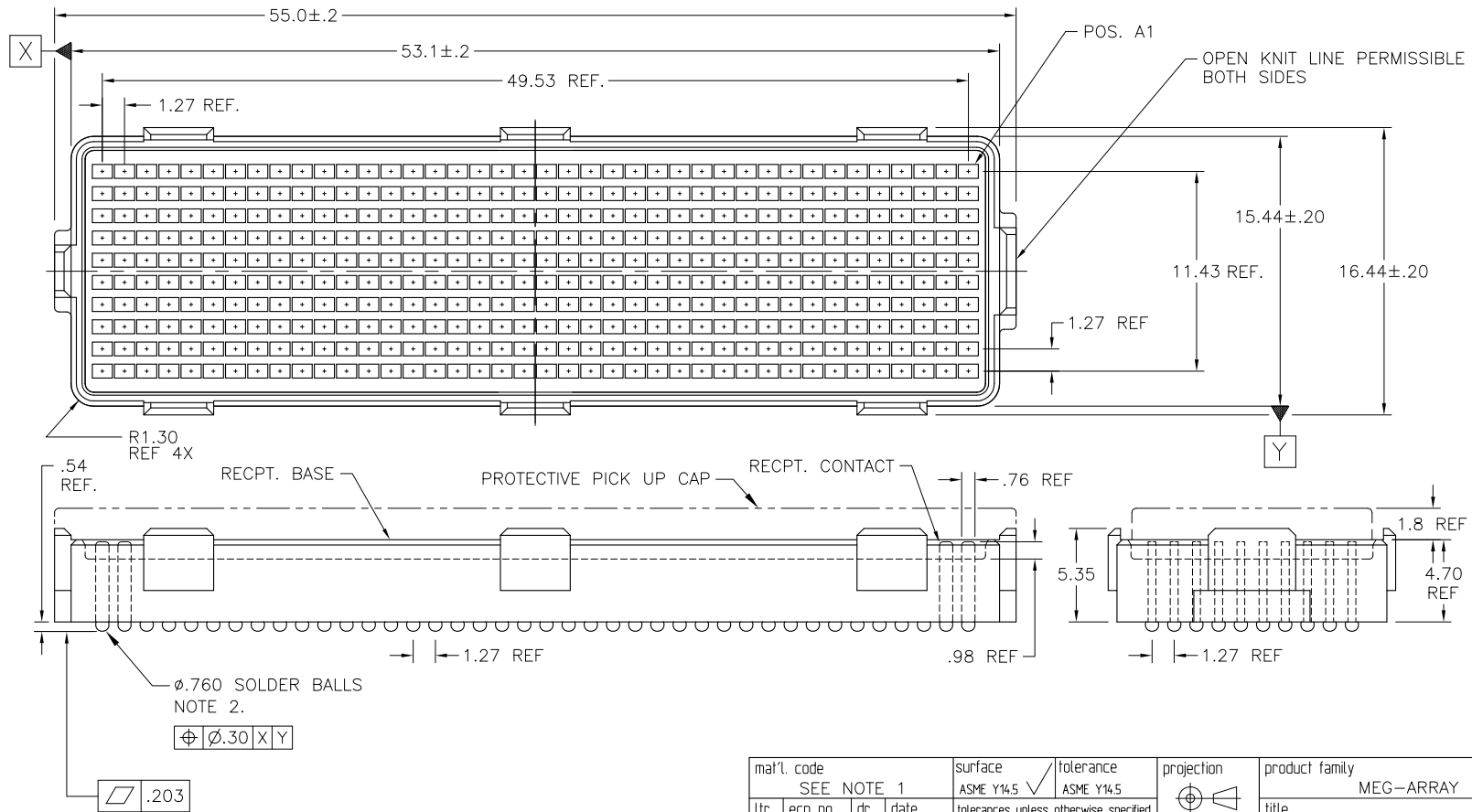


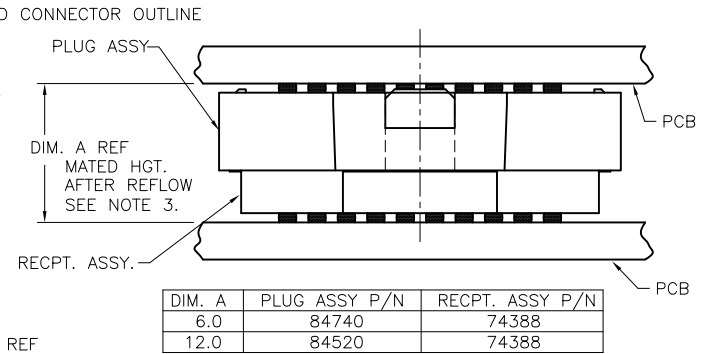
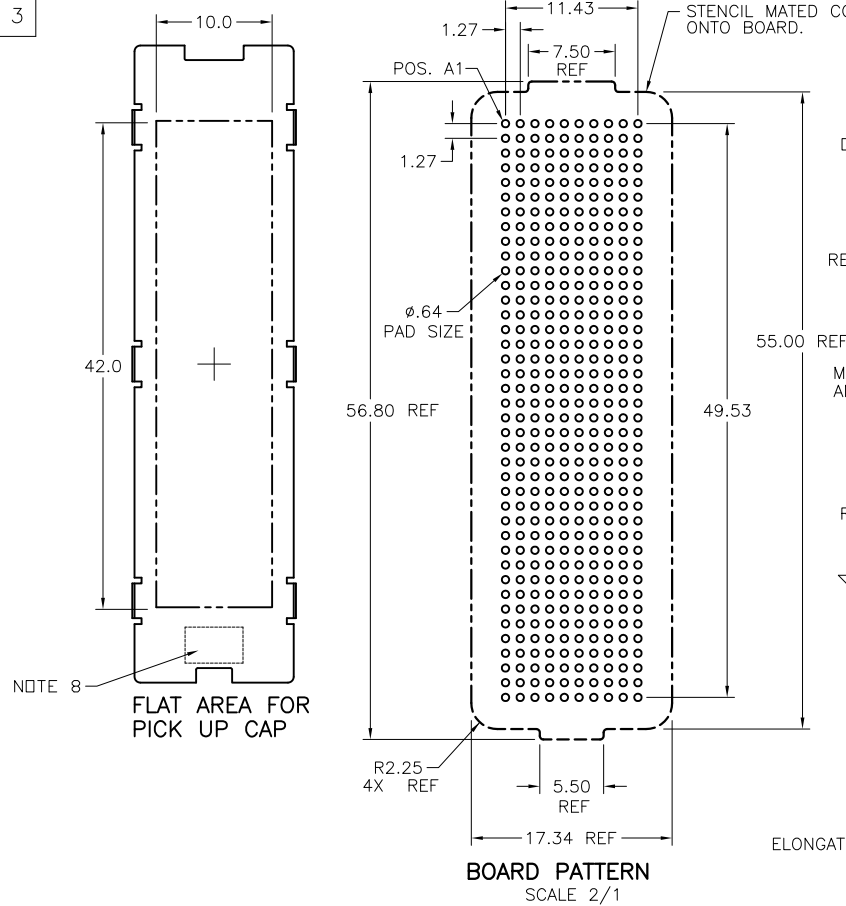
PRODUCT NUMBER
SEE TABLE-SHEET 3



mat'l. code SEE NOTE 1				surface ASME Y14.5		tolerance ASME Y14.5		projection		product family MEG-ARRAY	
ltr	ecm no	dr	date	tolerances unless otherwise specified		angles		MM		title	
K	VO6-0560	LP	2006-06-23			X+3				6mm RECEPTACLE ASSEMBLY	
L	V-004017	HTB	2011-06-02			XX+13				10 X 40 = 400 POS.	
M	V-012333	RE	2012-08-08	0' ±2'		XXX+051		scale 3:1		dwg no	
N	V-13332	DCH	2012-10-30	dr		D WAUGHEN		1998-01-05		sheet 1 of 3	
P	V-13502	DCH	2012-11-20	engr		T LEMKE		1998-01-05		size	
-	-	-	-	chr		T LEMKE		1998-01-05		A4	
J	VO4-0940	VS	2001-10-18	appd		T LEMKE		1998-01-05		type	
sheet	revision	P	P	P						CUSTOMER Drawing	
index	sheet	1	2	3							

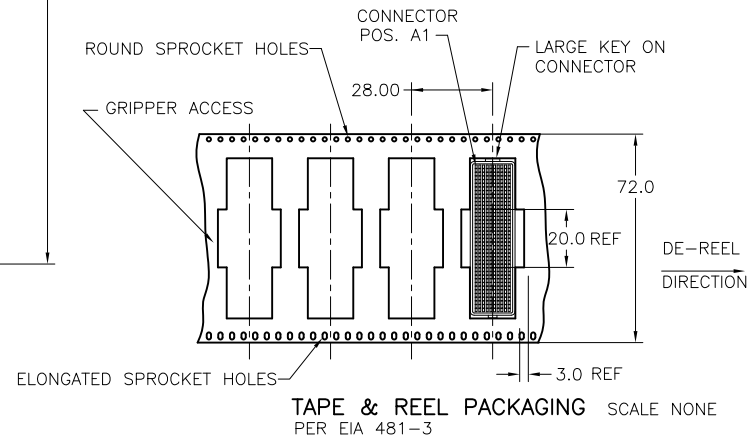
PRODUCT NUMBER

SEE TABLE-SHEET 3



MATED HEIGHT AFTER REFLOW IS BASED ON ϕ .64mm PAD (METAL-DEFINED) AND .13mm SOLDER PASTE STENCIL THICKNESS. SEE NOTE 3.

END VIEW - MATED CONNECTORS SCALE NONE



mat'l. code	surface	tolerance	projection	product family
SEE NOTE 1	ASME Y14.5	ASME Y14.5		MEG-ARRAY
ltr	ecm no	dr	date	title
P				6mm RECEPTACLE ASSEMBLY
				10 x 40 = 400 POS.
				dwg no
				sheet 2 of 3
				size
				74388
				A4
				type
				CUSTOMER Drawing
sheet index	revision sheet			

NOTES:

① MATERIAL:

HOUSING: LCP

CONTACT: COPPER ALLOY

PLATING:

CONTACT: (SEE TABLE)

SOLDER BALL: (SEE TABLE)

EUTECTIC SnPb OR LEAD FREE

95.5Sn/4Ag/0.5Cu

② SOLDER BALLS WILL NOT BE PERFECT SPHERICAL SHAPE DUE TO REFLOW ATTACHMENT.

③ MATED HEIGHT EFFECTED BY CUSTOMER'S PCB PAD SIZE, PLATING, SOLDER REFLOW PROFILE, & SOLDER PASTE.

④ PLATING FOR INDICATED -2XX SERIES PRODUCT NUMBERS MEET THE REQUIREMENTS OF GR-1217-CORE, CENTRAL OFFICE ENVIRONMENT, (25 YEAR LIFE EXPECTANCY). THE CONTACT GEOMETRY IN THESE PRODUCT NUMBERS IS SPECIAL ALSO.

⑤ FOR PROPER APPLICATION FOLLOW FCI APPLICATION SPECIFICATION GS-20-033 LEAD FREE SOLDER BALLS WILL NOT SOLDER PROPERLY IN A LEADED SOLDER PROCESS DUE TO A HIGHER REFLOW TEMPERATURE. LEAD FREE PRODUCT IS THEREFORE NOT BACKWARDS COMPATIBLE WITH LEADED OR SOME SOLDERING APPLICATIONS. REFERENCE FCI APPLICATION SPECIFICATION.

⑥ THIS PRODUCT MEETS EUROPEAN UNION DIRECTIVES AND OTHER COUNTRY REGULATIONS AS DESCRIBED IN GS-47-0004 PRODUCT MEETING THIS DIRECTIVE IS IDENTIFIED IN THE LOT CODE NUMBER MARKED ON EACH PART BY HAVING AN "X" IN THE SEVENTH CHARACTER POSITION.

⑦ 74388-A01, AND -A01LF HAVE CUSTOMER SPECIAL Au PLATING.

⑧ CURRENT COMPANY LOGO TO BE VISIBLE IN APPROXIMATE AREA SHOWN.

PRODUCT NUMBER	PICK-UP (NATURAL OR BLACK COLOR)	CAP COLOR	CONTACT PLATING AND THICKNESS	SOLDER BALL	NOTES
74388-001		YES	15u" (.38um) Au	SnPb	
74388-001LF		YES	15u" (.38um) Au	LEAD FREE	6
74388-091		YES	15u" (.38um) GXT	SnPb	
74388-091LF		YES	15u" (.38um) GXT	LEAD FREE	6
74388-101		YES	30u" (.76um) Au	SnPb	
74388-101LF		YES	30u" (.76um) Au	LEAD FREE	6
74388-191		YES	30u" (.76um) GXT	SnPb	
74388-191LF		YES	30u" (.76um) GXT	LEAD FREE	6
74388-201		YES	50u" (1.27um) Au SPECIAL	SnPb	4
74388-201LF		YES	50u" (1.27um) Au SPECIAL	LEAD FREE	4 AND 6
74388-291		YES	50u" (1.27um) GXT SPECIAL	SnPb	4
74388-291LF		YES	50u" (1.27um) GXT SPECIAL	LEAD FREE	4 AND 6
74388-A01		YES	30u" (.76um) SPECIAL	SnPb	7
74388-A01LF		YES	30u" (.76um) SPECIAL	LEAD FREE	6 AND 7
74388-301		YES	15u" (.38um) Au SPECIAL	SnPb	7
74388-301LF		YES	15u" (.38um) Au SPECIAL	LEAD FREE	6 AND 7
74388-401		YES	30u" (.76um) Au SPECIAL	SnPb	7
74388-401LF		YES	30u" (.76um) Au SPECIAL	LEAD FREE	6 AND 7
74388-501		YES	Au SPECIAL	SnPb	4 AND 7
74388-501LF		YES	Au SPECIAL	LEAD FREE	4, 6 AND 7

⑩ A  SYMBOL WILL BE NEXT TO ANY DIMENSION, NEW VIEW OR NOTE WHICH HAS BEEN MODIFIED WITH THE CURRENT DRAWING REVISION

mat'l. code	surface	tolerance	projection	product family
SEE NOTE 1	ASME Y14.5	ASME Y14.5		MEG-ARRAY
ltr	ecn no	dr	date	title
P				6mm RECEPTACLE ASSEMBLY
				10 x 40 = 400 POS.
				dwg no
				sheet 3 of 3
				size
				74388
				A4
				type
				CUSTOMER Drawing
sheet index	revision sheet			

Mouser Electronics

Authorized Distributor

Click to View Pricing, Inventory, Delivery & Lifecycle Information:

[Amphenol:](#)

[74388-A01](#) [74388-291](#) [74388-191](#) [74388-291LF](#) [74388-091](#)