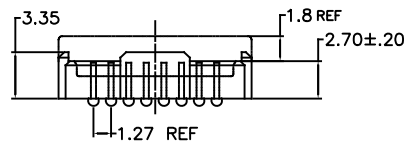
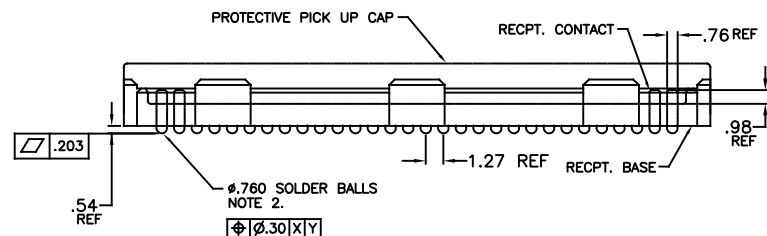
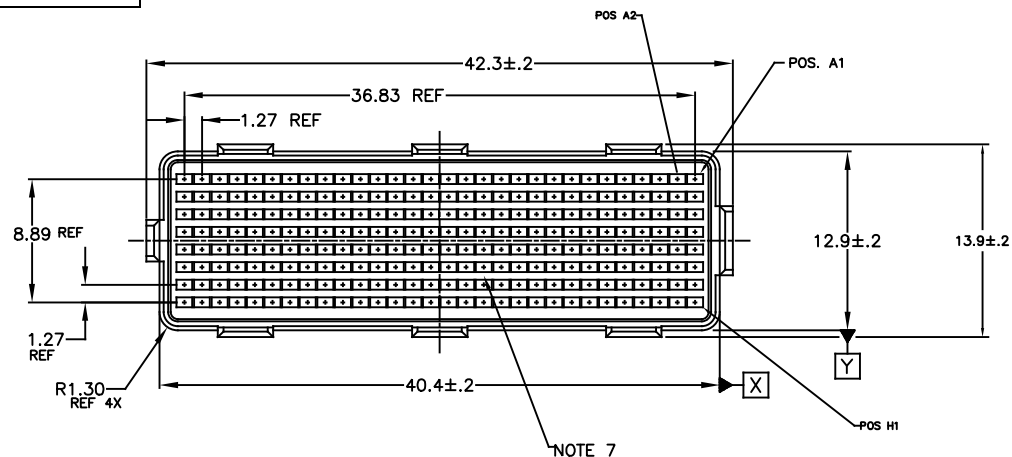
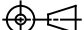

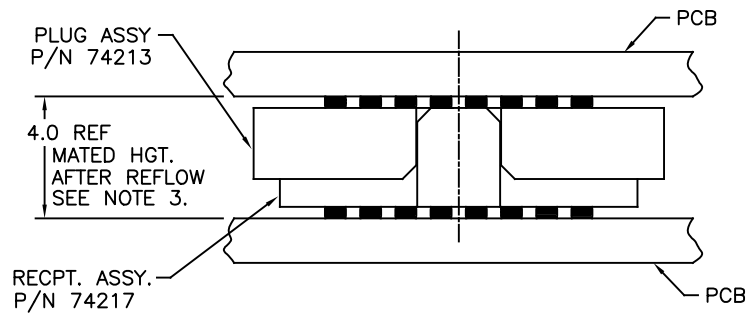
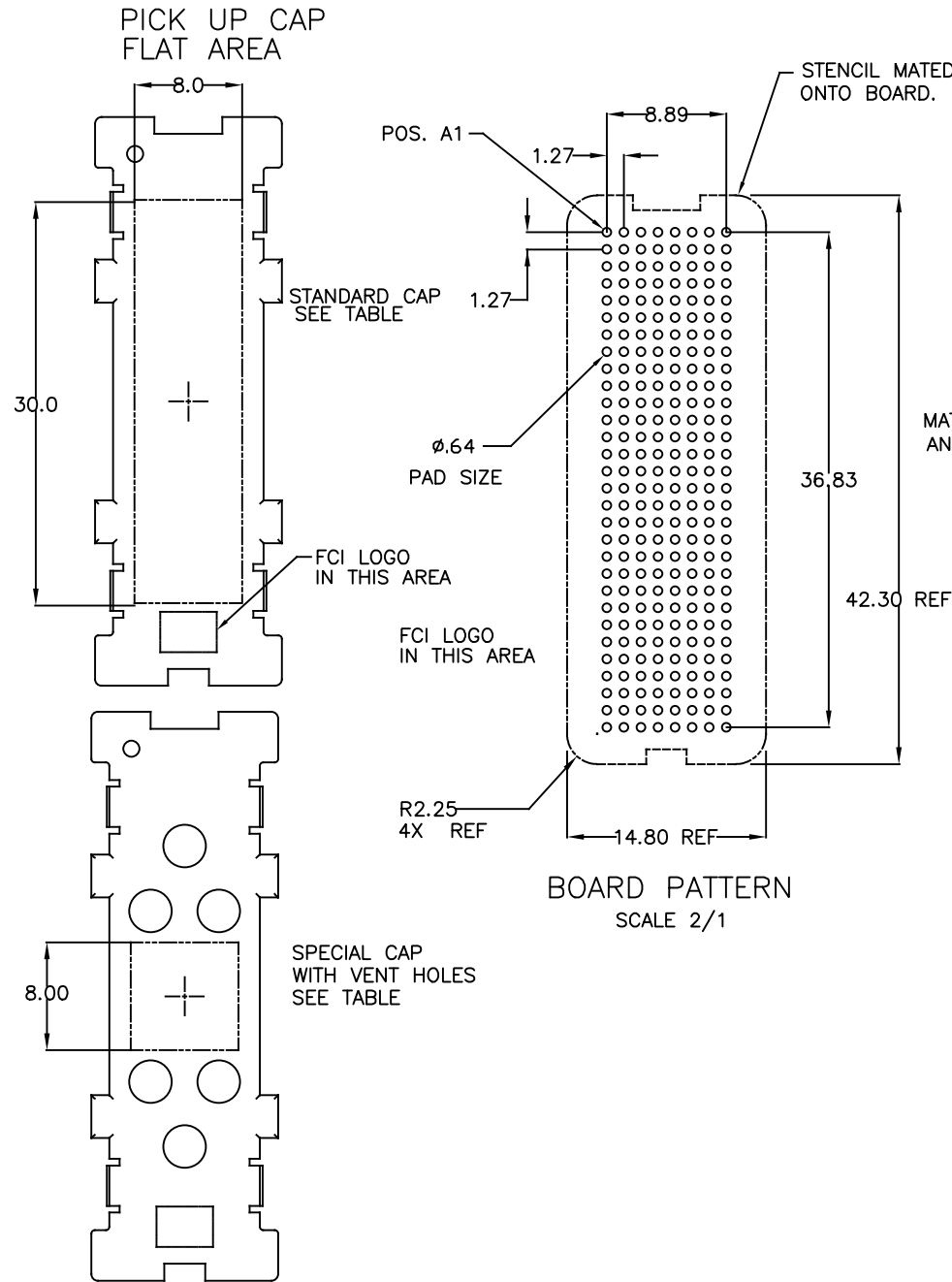


PRODUCT NUMBER
SEE SHEET 3

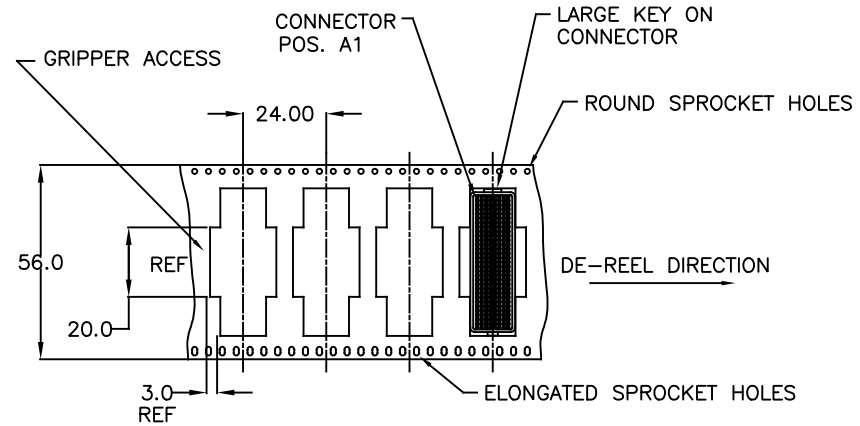


mat'l. code SEE-NOTE-1				surface ASMEY14.5 ✓		tolerance ASMEY14.5		projection 		product family MEG-ARRAY				
ltr	ecn no	dr	date	tolerances unless otherwise specified							title 4MM-RECPT-ASSY. 8X30=240-POS			
M	V06-0560	LP	2006/06/22	angles		linear	.X±.3		scale 1:1					
N	V-13467	DCH	2012-11-15				.XX±.10							
P	V-16678	DCH	2014-1-7	0°±2°		.XXX±.050								
R	V-17551	DCH	2014-04-21	dr	D.WAUGHEN		11.12.97			Amphenol FCi	dwg no			sheet 1 of 3
S	V-20116	RWB	2015-1-18	engr	T.LEMKE		11.12.97		74217					
T	V-40495	HCL	2021-03-28	chr	T.LEMKE		11.12.97		type			CUSTOMER Drawing		
-	-	-	-	appd	T.LEMKE		11.12.97							
sheet index		revision sheet		T	T	T	T	T	T	T	T	T	T	T
		sheet		1	2	3								



MATED HEIGHT AFTER REFLOW IS BASED ON Ø .64mm PAD (METAL-DEFINED) AND .13mm SOLDER PASTE STENCIL THICKNESS. SEE NOTE 3.

END VIEW - MATED CONNECTORS



TAPE & REEL PACKAGING SCALE NONE PER EIA 481-3

mat'l. code SEE-NOTE-1				surface ASMEY14.5	tolerance ASMEY14.5	projection MM	product family MEG-ARRAY	
ltr	ecn no	dr	date	tolerances unless otherwise specified		 scale 1:1	title 4MM-RECPT-ASSY. 8X30=240-POS	
T				angles	.X±.3		dwg no 74217 sheet 2 of 3 size A4	
				linear	.XX±.10			
				0°±2°	.XXX±.050			
				dr	D.WAUGHEN 11.12.97			
				enr	T.LEMKE 11.12.97	Amphenol FCI	type CUSTOMER Drawing	
				chr	T.LEMKE 11.12.97			
				appd	T.LEMKE 11.12.97			
sheet index	revision sheet	T 1	T 2	T 3				

PRODUCT NUMBER	NOTES	CONTACT PLATING	SOLDER BALL	CAP STYLE	
74217-001			SnPb	STANDARD	△
74217-001BF	8		SnPb	STANDARD	
74217-001LF	5 6	15u" (.38um) Au OVER Ni	SnAgCu LEAD FREE	STANDARD	
74217-001BLF	5 6 8		SnAgCu LEAD FREE	STANDARD	△
74217-091			SnPb	STANDARD	
74217-091BF	8		SnPb	STANDARD	△
74217-091LF	5 6	15u" (.38um) GXT OVER Ni	SnAgCu LEAD FREE	STANDARD	
74217-091BLF	5 6 8		SnAgCu LEAD FREE	STANDARD	△
74217-093			SnPb	SPECIAL WITH VENT HOLES	
74217-093LF	5 6	15u" (.38um) GXT OVER Ni	SnAgCu LEAD FREE	SPECIAL WITH VENT HOLES	
74217-093BF	8		SnPb	SPECIAL WITH VENT HOLES	
74217-093BLF			SnAgCu LEAD FREE	SPECIAL WITH VENT HOLES	
74217-101			SnPb	STANDARD	
74217-101BF	8		SnPb	STANDARD	△
74217-101LF	5 6	30u" (.76um) Au OVER Ni	SnAgCu LEAD FREE	STANDARD	
74217-101BLF	5 6 8		SnAgCu LEAD FREE	STANDARD	△
74217-191			SnPb	STANDARD	
74217-191BF	8		SnPb	STANDARD	△
74217-191LF	5 6	30u" (.76um) GXT OVER Ni	SnAgCu LEAD FREE	STANDARD	
74217-191BLF	5 6 8		SnAgCu LEAD FREE	STANDARD	△
74217-201			SnPb	STANDARD	
74217-201BF	8	SEE NOTE 4.	SnPb	STANDARD	△
74217-201LF	5 6		SnAgCu LEAD FREE	STANDARD	
74217-201BLF	5 6 8		SnAgCu LEAD FREE	STANDARD	△
74217-291			SnPb	STANDARD	
74217-291BF	8	SEE NOTE 4.	SnPb	STANDARD	△
74217-291LF	5 6		SnAgCu LEAD FREE	STANDARD	
74217-291BLF	5 6 8		SnAgCu LEAD FREE	STANDARD	△

NOTES:

1. MAT'L:

HOUSING: LCP

CONTACT: COPPER ALLOY

PLATING

CONTACT: (SEE TABLE ON SHEET1)

SOLDER BALL: (SEE TABLE ON SHEET1)

EUTECTIC SnPb OR LEAD FREE

95.5Sn/4Ag/0.5Cu

6. THIS PRODUCT MEETS EUROPEAN UNION DIRECTIVES AND OTHER COUNTRY REGULATIONS AS DESCRIBED IN GS-47-0004 PRODUCT MEETING THIS DIRECTIVE IS IDENTIFIED IN THE LOT CODE NUMBER MARKED ON EACH PART BY HAVING AN "X" IN THE SEVENTH CHARACTER POSITION

7. VISIBLE KNIT LINES ANYWHERE ON THE FLOOR OF THE HOUSING ARE PERMITTED. OPEN KNIT LINES ANYWHERE ARE NOT PERMITTED.

△ 8. FOR THESE DASH NUMBERS, PRODUCT IS BERYLLIUM FREE.

9. A △ SYMBOL WILL BE NEXT TO ANY DIMENSION, NEW VIEW OR NOTE WHICH HAS BEEN MODIFIED WITH THE CURRENT DRAWING REVISION

2. SOLDER BALLS WILL NOT BE PERFECT SPHERICAL SHAPE DUE TO REFLOW ATTACHMENT.

3. MATED HEIGHT EFFECTED BY CUSTOMER'S PCB PAD SIZE, PLATING, SOLDER REFLOW PROFILE, & SOLDER PASTE.

4. PLATING FOR -2XX SERIES DASH NOS. MEETS THE REQUIREMENTS OF CENTRAL OFFICE ENVIRONMENT, (25 YEAR LIFE EXPECTANCY).

5. FOR PROPER APPLICATION FOLLOW FCI APPLICATION SPECIFICATION GS-20-033 LEAD FREE SOLDER BALLS WILL NOT SOLDER PROPERLY IN A LEADED SOLDER PROCESS DUE TO A HIGHER REFLOW TEMPERATURE. LEAD FREE PRODUCT IS THEREFORE NOT BACKWARDS COMPATIBLE WITH LEADED OR SOME SOLDERING APPLICATIONS. REFERENCE FCI APPLICATION SPECIFICATION

mat'l. code				surface	tolerance	projection	product family
-				ASMEY14.5	ASMEY14.5		MEG-ARRAY
ltr	ecr no	dr	date	tolerances unless otherwise specified			title
T				angles	.X±.3		4MM-RECPT-ASSY.
				linear	.XX±.10		8X30=240-POS
				0°±2°	.XXX±.050		
				dr	D.WAUGHEN 11.12.97	scale 1:1	dwg no
				engr	T.LEMKE 11.12.97	Amphenol FCI	sheet 3 of 3
				chr	T.LEMKE 11.12.97		size
				appd	T.LEMKE 11.12.97		A4
sheet	revision					type	CUSTOMER Drawing
index	sheet						

Mouser Electronics

Authorized Distributor

Click to View Pricing, Inventory, Delivery & Lifecycle Information:

[FCI / Amphenol:](#)

[74217-191LF](#) [74217-091](#) [74217-191](#) [74217-291LF](#)