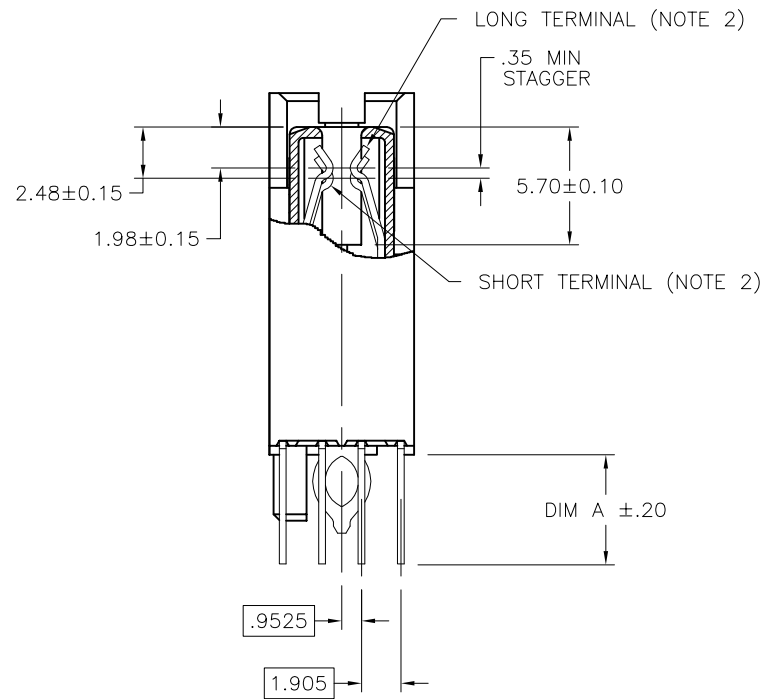


$L$

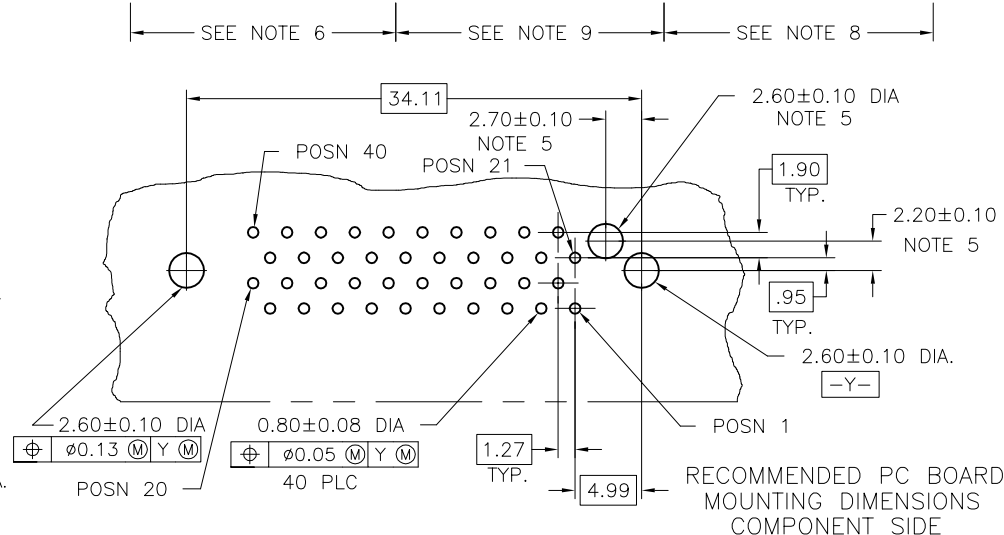


mat'l. code				surface ASME Y14.5	tolerance ASME Y14.5	projection 	product family SCA-2			
ltr	ecn no	dr	date	tolerances unless otherwise specified			title			
H				angles	.X±.3		SCA-2 & FIBER CHANNEL			
				linear	.XX±.13					
				0°±2°	.XXX±.051	scale 3:1	40 POS. RECEPT. ASS'Y EXT. HT.			
				dr	D. INGRAM	9/28/96		dwg no		sheet 2 of
				engr	JULIA WANG	5/25/07		72443		size
				chr	GARY HSIEH	5/25/07				A4
				appd	JOSEPH HSIA	5/25/07		type		Product Customer Drawing
sheet index	revision sheet									

PRODUCT NO. SEE NOTE 7	DIM A	POLARIZATION PEG	PLATING	RECOMMENDED P.C. BOARD THICKNESS	PRODUCT NO. SEE NOTE 7	PLATING	PRODUCT NO. SEE NOTE 12	PLATING	PRODUCT NO. SEE NOTE 12	PLATING	
72443-001	3.79	YES	NOTE 4	2.36mm (0.093") AND 3.18mm (0.125")	72443-101	NOTE 6	72443-001LF	NOTE 9	72443-201LF	NOTE 8	
↑ -001S					↑ -101S		↑ 		↑ 		
-002	↑ -102	↑ -002LF			↑ -202LF						
-002S	↑ -102S	↑ 			↑ 						
-003	↑ -103	↑ -003LF			↑ -203LF						
-003S	↑ -103S	↑ 			↑ 						
↓ -004	↓ -104	↓ -004LF			↓ -204LF						
72443-004S	72443-104S										

## NOTES :

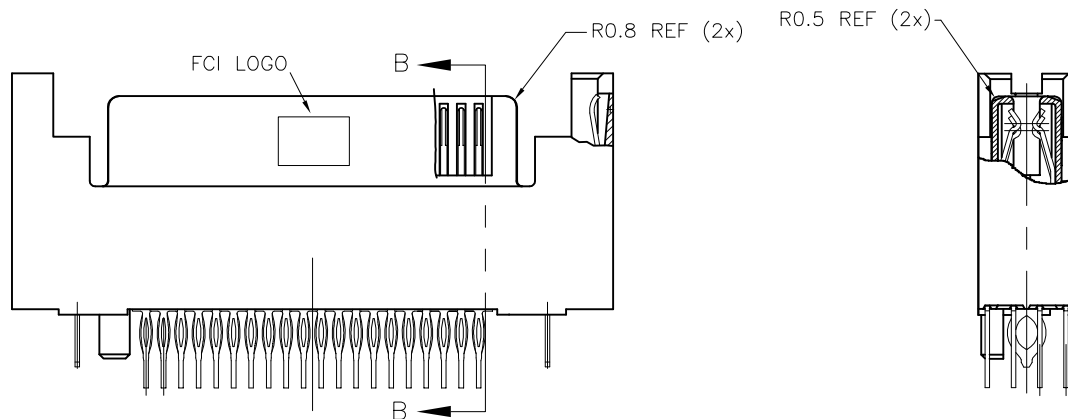
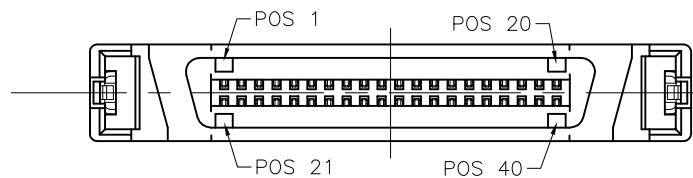
- ① TRUE POSITION NOTES APPLY AT TERMINAL TIP.
- ② CONTACTS IN POSITIONS 1 THRU 20, 24, 25, 27, 28, 30, 31, 33, AND 34 ARE SHORT TERMINALS. CONTACTS IN POSITIONS 21, 22, 23, 26, 29, 32, AND 35 THRU 40 ARE LONG TERMINALS.
- ③ RAW MATERIALS:  
HOUSING: HTN, UL94V-0, COLOR: BLACK  
CONTACTS: PHOSPHOR-BRONZE
- ④ CONTACT PLATING: 30u" (0.76um) MIN. GXT PLATING OVER 50u" (1.27um) NICKLE MIN. UNDERPLATE IN CONTACT AREA. 20u" (0.5um) MIN-60u" (1.5um) MAX TIN-LEAD PLATING OVER 50u" (1.27um) MIN NICKEL UNDERPLATE IN P.C. BOARD LEG AREA. 50u" (1.27um) MIN. NICKEL UNDERPLATE OVER REMAINING AREA.
- ⑤ DIMENSIONS DO NOT APPLY TO CONNECTOR STYLES WITHOUT POLARIZATION PEG. (SEE CHART)
- ⑥ CONTACT PLATING: 30u" (0.76um) MIN. GOLD PLATING OVER 50u" (1.27um) NICKLE MIN. UNDERPLATE IN CONTACT AREA. 20u" (0.5um) MIN-60u" (1.5um) MAX TIN-LEAD PLATING OVER 50u" (1.27um) MIN. NICKEL UNDERPLATE IN P.C. BOARD LEG AREA. 50u" (1.27um) MIN. NICKEL UNDERPLATE OVER REMAINING AREA.
- ⑦ PART NUMBERS WITH AN "S" SUFFIX ARE MANUFACTURED WITH A BRIGHT TIN-LEAD FINISH ON THE TERMINAL TAIL SECTION. PART NUMBERS WITHOUT AN END SUFFIX ARE MANUFACTURED WITH MATTE TIN-LEAD FINISH OR MATTE TIN FINISH.
- ⑧ CONTACT PLATING: 30u" (0.76um) GOLD PLATING OVER 50u" (1.27um) NICKLE UNDERPLATE IN CONTACT AREA. 20u" (0.5um) - 60u" (1.5um) TIN PLATING OVER 50u" (1.27um) - 100u" (2.54um) NICKEL UNDERPLATE IN P.C. BOARD LEG AREA. 50u" (1.27um) NICKEL UNDERPLATE OVER REMAINING AREA.
- ⑨ CONTACT PLATING: 30u" (0.76um) GXT PLATING OVER 50u" (1.27um) NICKLE UNDERPLATE IN CONTACT AREA. 20u" (0.5um) - 60u" (1.5um) TIN PLATING OVER 50u" (1.27um) - 100u" (2.54um) NICKEL UNDERPLATE IN P.C. BOARD LEG AREA. 50u" (1.27um) NICKEL UNDERPLATE OVER REMAINING AREA.
- ⑩ THE HOUSING WILL WITHSTAND EXPOSURE TO 260° C PEAK TEMPERATURE FOR 10 SECONDS IN A CONVECTION, INFRA RED VAPOR PHASE REFLOW OVEN.



- ⑪ THIS PRODUCT MEETS EUROPEAN UNION DIRECTIVES AND OTHER COUNTRY REGULATIONS AS DESCRIBED IN GS-22-008.
- 12 PART NUMBERS ENDING IN "LF" MEANS FOR NOTE 11 LEAD FREE IDENTIFICATION. P/N XXXXX-2XXLF IS EQUIVALENT TO PREVIOUS P/N XXXXX-2XX

mat'l. code	surface ASME Y14.5	tolerance ASME Y14.5	projection ASME Y14.5	product family SCA-2
ltr	ecn no	dr	date	title
H				SCA-2 & FIBER CHANNEL
				40 POS. RECEPT. ASS'Y EXT. HT.
				dwg no
				sheet 3 of 4
				size
				A4
				type
				Product Customer Drawing
sheet index	revision sheet			

SEE NOTE 12	DIM A	PEG	PLATING	BOARD THICKNESS	REMARK
72443-205LF	3.79	YES	NOTE 8	2.36mm (0.093")	NOTE ⑭
-206LF	3.79	NO		AND 3.18mm (0.125")	



ALL OTHER DIMENSIONS, REFER TO 72443-201LF (SHEET 1 - 3)

SECTION B-B

NOTES :

⑭ WITH CUSTOMISED RADIUS ADDED

mat'l. code		surface	tolerance	projection	product family
		ASME Y14.5	ASME Y14.5		SCA-2
ltr	ecn no	dr	date	tolerances unless otherwise specified	title
H				angles	SCA-2 & FIBER CHANNEL
				linear	40 POS. RECEPT. ASS'Y EXT. HT.
				0°±2°	scale 2:1
		dr	D. INGRAM 9/28/96		FCI
		engr	JULIA WANG 5/25/07		dwg no
		chr	GARY HSIEH 5/25/07		sheet 4 of 4
		appd	JOSEPH HSIA 5/25/07		size
sheet	revision				type
index	sheet				Product Customer Drawing

# Mouser Electronics

Authorized Distributor

Click to View Pricing, Inventory, Delivery & Lifecycle Information:

[FCI / Amphenol:](#)

[72443-202LF](#) [72443-101LF](#)