

All rights strictly reserved. Reproduction or issue to third parties in any form whatever is not permitted without written authority from the proprietor. Property of FCI. Copyright FCI.

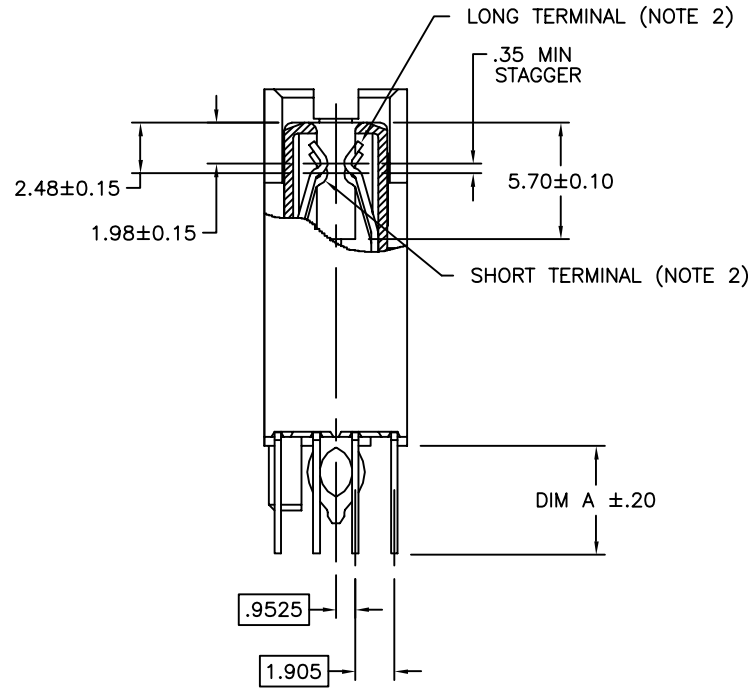
A
—
O
L

PDM: Rev:H **STATUS:Released** Printed: Mar 11, 2011.


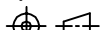

Tous droits strictement reserves. Reproduction ou communication a des tiers
Interdite sous quelque forme que ce soit sans autorisation ecrite du proprietaire.
Propriete de c FCI. Droits de reproduction FCI.

FCI

All rights strictly reserved. Reproduction or issue to third parties in any
form whatever is not permitted without written authority from the proprietor.
Property of FCI. Copyright FCI.



CONFIDENTIAL

mat'l. code				tolerances unless otherwise specified		CUSTOMER COPY	 www.fciconnect.com		
ltr	ecn no	dr	date	linear	.X ±.3		projection 	title SCA-2 & FIBER CHANNEL 80 POS. RECEPT. ASS'Y EXT. HT.	
H					.XX ±.13				
					.XXX ±.051				
				angles	0° ±2°				
		dr	M. FETROW	9/24/96	 MM scale 2:1	product family size			SCA-2 dwg no 72442
		enrg	A. RAISTRICK	9/24/96					
		chr	GL L00	11/22/04					
		appd	JOEY NG	11/22/04					
sheet index	revision sheet								

cage code
22526

ACAD

PDM: Rev:H

STATUS:Released

Printed: Mar 11, 2011


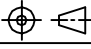
PRODUCT NO.	DIM A	POLARIZATION PEG	PLATING	RECOMMENDED P.C. BOARD THICKNESS	PRODUCT NO.	PLATING
72442-001LF	3.79	YES	NOTE 9	2.36mm (0.093") AND 3.18mm (0.125")	72442-201LF	NOTE 8
↑ -002LF	3.79	NO			↑ -202LF	
↓ -003LF	4.60	YES			↓ -203LF	
72442-004LF	4.60	NO			72442-204LF	

NOTE 8

NOTES :

- ⑧ CONTACT PLATING: 30u" (0.76um) GOLD PLATING OVER 50u" (1.27um) NICKLE UNDERPLATE IN CONTACT AREA.
20u" (0.5um) - 60u"(1.5um) TIN PLATING OVER 50u" (1.27um) -100u" (2.54um) NICKEL UNDERPLATE IN P.C. BOARD LEG AREA. 50u" (1.27um) NICKEL UNDERPLATE OVER REMAINING AREA.
- ⑨ CONTACT PLATING: 30u" (0.76um) GXT PLATING OVER 50u" (1.27um) NICKLE UNDERPLATE IN CONTACT AREA.
20u" (0.5um) - 60u"(1.5um) TIN PLATING OVER 50u" (1.27um) -100u" (2.54um) NICKEL UNDERPLATE IN P.C. BOARD LEG AREA. 50u" (1.27um) NICKEL UNDERPLATE OVER REMAINING AREA.
- ⑩ THE HOUSING WILL WITHSTAND EXPOSURE TO 260° C PEAK TEMPERATURE FOR 10 SECONDS IN A CONVECTION, INFRA RED VAPOR PHASE REFLOW OVEN.
- ⑪ THIS PRODUCT MEETS EUROPEAN UNION DIRECTIVES AND OTHER COUNTRY REGULATIONS AS DESCRIBED IN GS-22-008.
- 12 PART NUMBERS ENDING IN "LF" MEANS FOR NOTE 11 LEAD FREE IDENTIFICATION.

CONFIDENTIAL

mat'l. code				tolerances unless otherwise specified		CUSTOMER COPY	 www.fciconnect.com	
ltr	ecn no	dr	date	linear	.X ±.3			
H					.XX ±.13			
					.XXX ±.051			
				angles	0° ±2°	 MM	title SCA-2 & FIBER CHANNEL 80 POS. RECEPT. ASS'Y EXT. HT.	
				dr	M. FETROW 9/24/96			
				enrg	A. RAISTRICK 9/24/96			
				chr	GL L00 11/22/04			
				appd	JOEY NG 11/22/04	scale 2:1	product family SCA-2 size dwg no A 72442	
sheet index	revision sheet							

cage code
22526

ACAD

PDM: Rev:H

STATUS:Released

Printed: Mar 11, 2011

Mouser Electronics

Authorized Distributor

Click to View Pricing, Inventory, Delivery & Lifecycle Information:

[FCI / Amphenol:](#)

[72442-103LF](#)