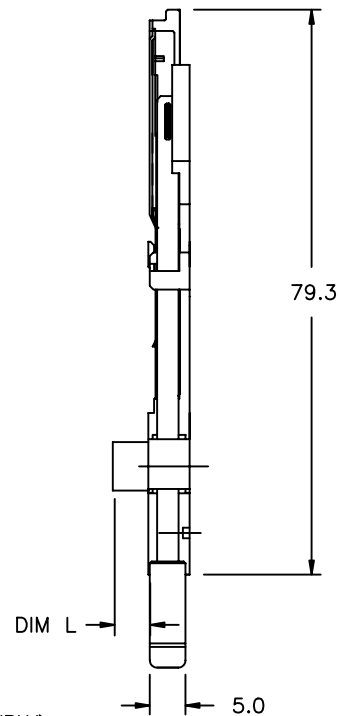
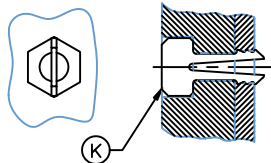


PRODUCT NO. NOTE ①		DIM L	DIM S
72336-100CA	72336-100CALF	0	13
72336-122CA	72336-122CALF	2.2	
72336-143CA	72336-143CALF	4.3	
72336-150CA	72336-150CALF	5	
72336-100DA	72336-100DALF	0	15.6
72336-122DA	72336-122DALF	2.2	
72336-143DA	72336-143DALF	4.3	
72336-150DA	72336-150DALF	5	
72336-100FA	72336-100FALF	0	21
72336-122FA	72336-122FALF	2.2	
72336-143FA	72336-143FALF	4.3	
72336-150FA	72336-150FALF	5	

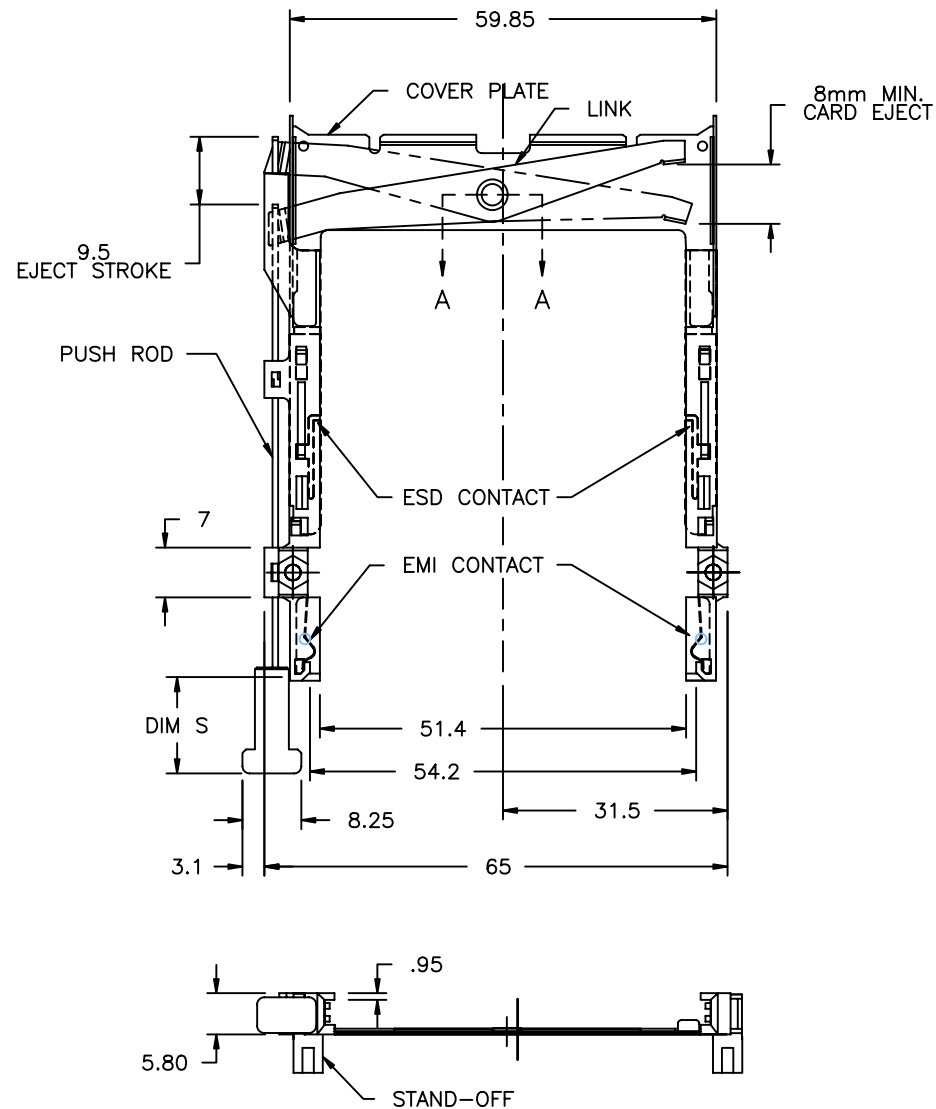


NOTES:

- ① ADD "H" TO PART NUMBER FOR OPTIONAL HOLD DOWN (2 PER ASSEMBLY).



2. LINK TO MOVE ALONG INSIDE WALL OF COVER PLATE SMOOTHLY AFTER ASSEMBLING WITH HEADER.
3. MATERIAL:
PLASTIC GUIDES: POLYPHTHARAMIDE UL94V-0
COLOR: BLACK
COVER PLATE: STAINLESS STEEL
EMI CONTACT: PHOSPHOR BRONZE
4. FINISH:
EMI CONTACT: CONTACT AREA: 0.5um Au
UNDER PLATING: 2.0um Ni
5. RECOMMENDED SCREW TORQUE:
1.0-1.5 MAX IN-LBS(1.2-1.7 CM-KGS)

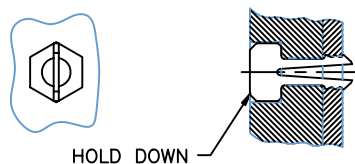


mat'l. code				surface	tolerance	projection	product family
				ISO 1302	ISO 406 ISO 1101		PCMCIA
ltr	ecm no	dr	date	tolerances unless otherwise specified			title
C	T70090	RHG	4/28/97	angles	.X±.3	MM	NARROW BODY FRONT EJECT
D	V12231	TFG	9/19/01	linear	.XX±.13		CARDBUS MECHANISM ASSEMBLY
E	N06-0188	MZ	07/12/06	±2'	.XXX±.051	scale	
F	N08-0060	MZ	6/20/08	dr	Mike Zhou	07/11/06	dwg no
				enr	Mike Zhou	07/11/06	sheet 1 of 3 size
				chr	Qin David	07/11/06	72336 A4
				appd	Jack Wang	07/11/06	type CUSTOMER Drawing
sheet	revision	F	F	F			
index	sheet	1	2	3			

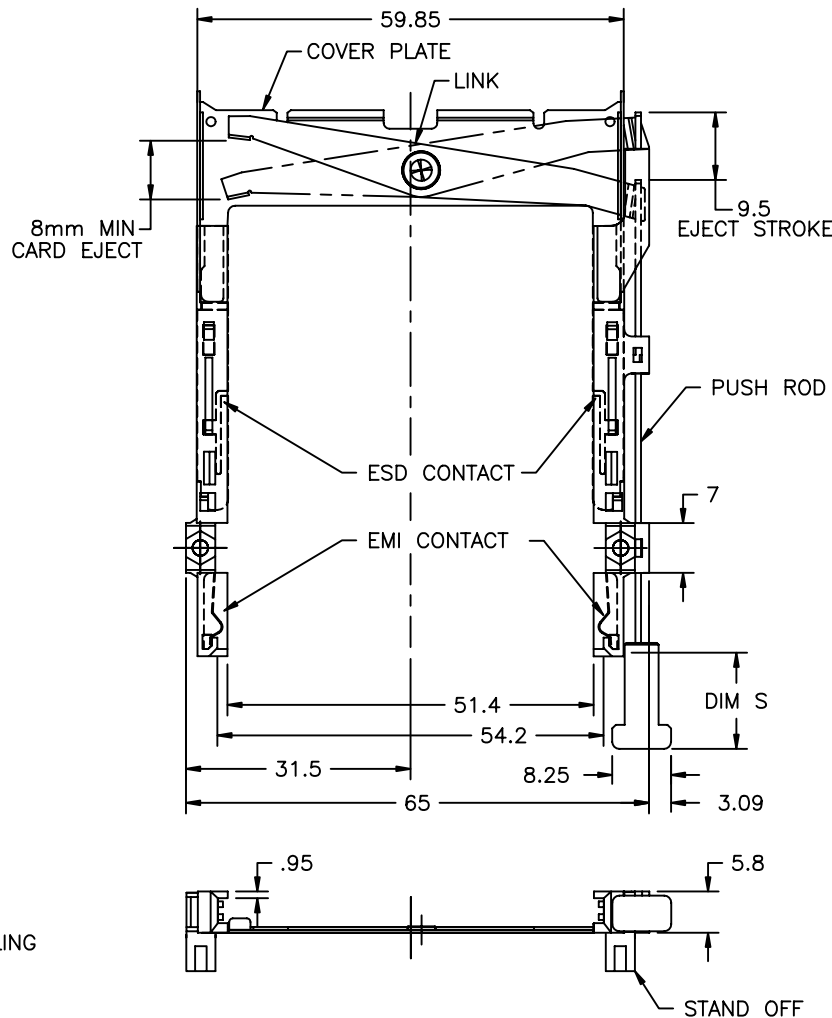
PRODUCT NO. NOTE ①		DIM L	DIM S
72336-000CA	72336-000CALF	0	13
72336-022CA	72336-022CALF	2.2	
72336-043CA	72336-043CALF	4.3	
72336-050CA	72336-050CALF	5	
72336-000DA	72336-000DALF	0	15.6
72336-022DA	72336-022DALF	2.2	
72336-043DA	72336-043DALF	4.3	
72336-050DA	72336-050DALF	5	
72336-000FA	72336-000FALF	0	21
72336-022FA	72336-022FALF	2.2	
72336-043FA	72336-043FALF	4.3	
72336-050FA	72336-050FALF	5	

NOTES:

- ① ADD "H" TO PART NUMBER FOR OPTIONAL HOLD DOWN (2 PER ASSEMBLY).



- LINK TO MOVE ALONG INSIDE WALL OF COVER PLATE SMOOTHLY AFTER ASSEMBLING WITH HEADER.
- MATERIAL:
PLASTIC GUIDES: POLYPHTHARAMIDE UL94V-0
COLOR: BLACK
COVER PLATE: STAINLESS STEEL
EMI CONTACT: PHOSPHOR BRONZE
- FINISH:
EMI CONTACT: CONTACT AREA: 0.5um Au
UNDER PLATING: 2.0um Ni
- RECOMMENDED SCREW TORQUE:
1.0-1.5 MAX IN-LBS(1.2-1.7 CM-KGS)



mat'l. code				surface	tolerance	projection	product family			
				ISO 1302	ISO 406 ISO 1101		PCMCIA			
ltr	ecn no	dr	date	tolerances unless otherwise specified			title			
F				angles	linear	.X±.3 .XX±.13 .XXX±.051	NARROW BODY FRONT EJECT CARDBUS MECHANISM ASSEMBLY			
				±2'		scale				
				dr	Mike Zhou	07/11/06	dwg no			
				enr	Mike Zhou	07/11/06	sheet 2of 3 size			
				chr	Qin David	07/11/06	72336			
				appd	Jack Wang	07/11/06	A4			
sheet index		revision sheet					type CUSTOMER Drawing			

Mouser Electronics

Authorized Distributor

Click to View Pricing, Inventory, Delivery & Lifecycle Information:

[FCI / Amphenol:](#)

[72336-022CA](#) [72336-050CA](#) [72336-100CA](#) [72336-043CA](#) [72336-000CALF](#) [72336-000CA](#) [72336-122CA](#) [72336-143CA](#) [72336-150CA](#)