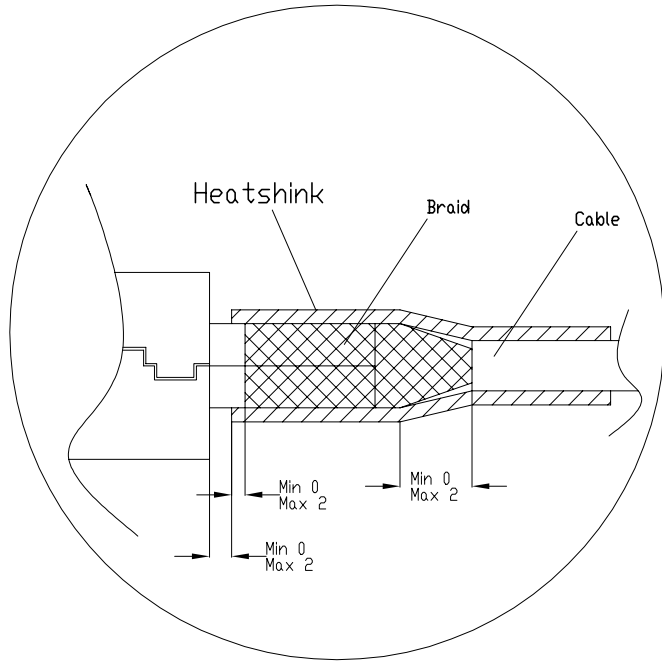
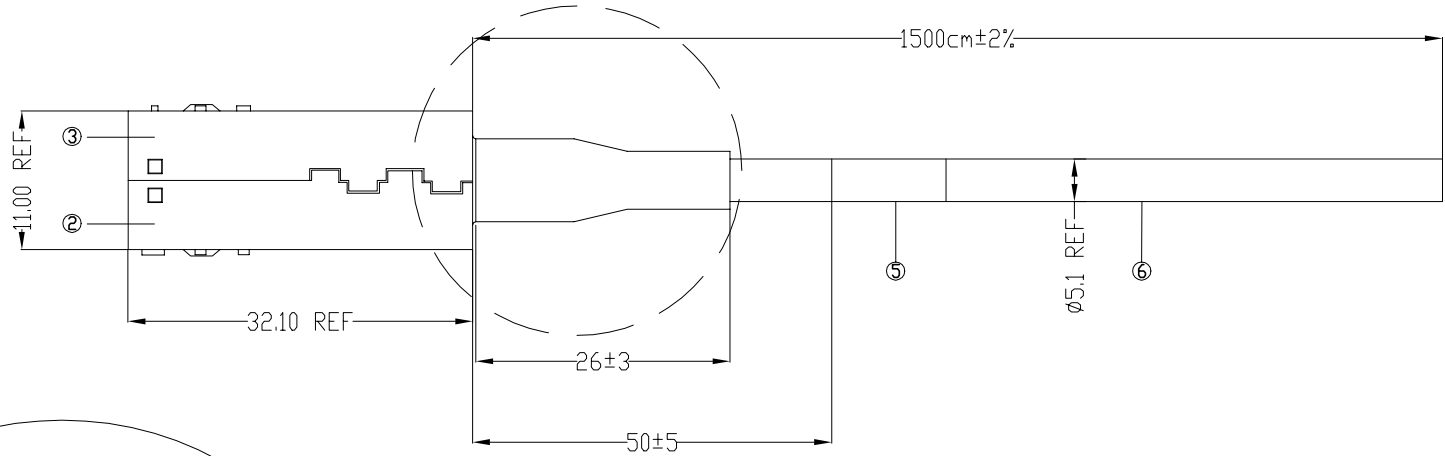
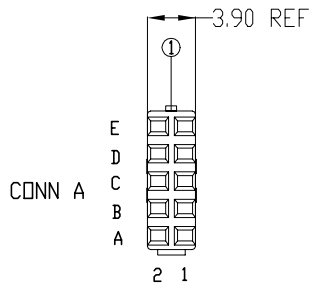


CUSTOMER P/N	FCI P/N	L (CM)
87W5113-1500	53369-001LF	1500



⑥	CABLE - 8 PAIR	AR	M
⑤	CABLE LABEL	1	PC
④	HeatShink	AR	M
③	COVER	1	PC
②	COVER (LATCH SIDE)	1	PC
①	TERMINAL BLOCK 24-26AWG	1	PC
No.	DESCRIPTION	QTY	UNIT

rev	ecn no	dr	date
A	N10-0087	YJ	100406

www.fciconnect.com			surface	-	tolerance std	-	projection	mm
			TOLERANCES UNLESS OTHERWISE SPECIFIED					
Dr	Jack Yang	4/06/2010	ANGULAR	LINEAR	0.X	±-		
Eng	Jack Yang	4/06/2010			0.XX	±-		
Chr	Jack Yang	4/06/2010	0°	±-	0.XXX	±-	size	Scale
Appr	Jackson Wang	4/06/2010	Product family				ECN	2:3
			Spec ref				-	
			title			5X2 METRAL SHIELDED ASSY		Rev.
			catalog no			53369		A
						CUSTOMER		sheet 1 of 2

NOTES:

1. ASSEMBLY MUST BE TESTED ELECTRICALLY FOR CORRECT PAIRS

CONTINUITY, SHORT CIRCUITS AND HIGH POT ACCORDING TO GES-19-009.
COUNTER PARTS FOR TESTING: 72031, 72032 OR 85733

2. MINIMUM INFORMATION ON LABEL AS FOLLOWS:

-87W5113-1500 REV.R1A

-FCI P/N.

-BATCH. CODE.

-MANUFACTURING DATE, MONTH AND YEAR (MM-YY)

3. PACKAGING- FIRSTLY WRAPPED CONNECTOR ENDS IN BUBBLE-PACK,
THEN PUT PRODUCT IN AN ANTI-STATIC PLASTIC BAG , AND BAGS
BULK PACKED IN A BOX

WIRE DIAGRAM		
CONN A	WIRE COLOR	TWISTED PAIR NO
A1	WHITE/BLUE	1
A2	WHITE/GREEN	3
B1	BLUE/WHITE	1
B2	GREEN/WHITE	3
C1	WHITE/GREY	5
C2	GREY/WHITE	5
D1	WHITE/ORANGE	2
D2	WHITE/BROWN	4
E1	ORANGE/WHITE	2
E2	BROWN/WHITE	4
NOT CONNECTED	YELLOW/BLUE	6
	BLUE/YELLOW	6
	ORANGE/YELLOW	7
	YELLOW/ORANGE	7
	GREEN/YELLOW	8
	YELLOW/GREEN	8
SHIELD	BRAID	

rev	ecn no	dr	date
A	N10-0087	YJ	100406

www.fciconnect.com			surface	-	tolerance std	-	projection	mm
			TOLERANCES UNLESS OTHERWISE SPECIFIED					
Dr	Jack Yang	4/06/2010	ANGULAR	LINEAR	0.X	±-	size	Scale
Eng	Jack Yang	4/06/2010			0.XX	±-	A3	2:3
Chr	Jack Yang	4/06/2010	0°	±-	0.XXX	±-	ECN	
Appr	Jackson Wang	4/06/2010	Product family				Spec ref	-
			title			5X2 METRAL SHIELDED ASSY	dwg no	Rev.
							53369	A
			catalog no			-	CUSTOMER	sheet 2 of 2

Mouser Electronics

Authorized Distributor

Click to View Pricing, Inventory, Delivery & Lifecycle Information:

[FCI / Amphenol:](#)

[53369-001LF](#)