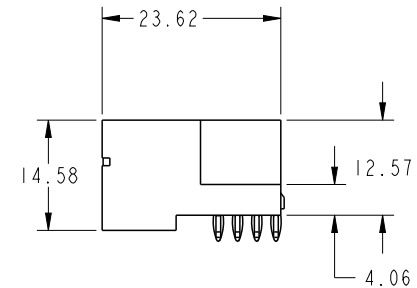
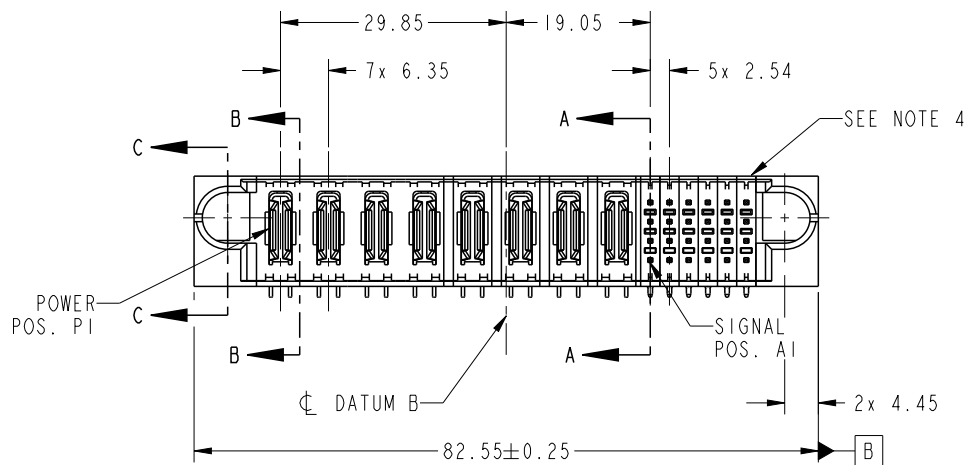


PRODUCT NO. 51722-10802400CB NOTE 3	ROWS D C B A	POWER								SIGNAL					
		E1	P1	P2	P3	P4	P5	P6	P7	P8	1	2	3	4	5

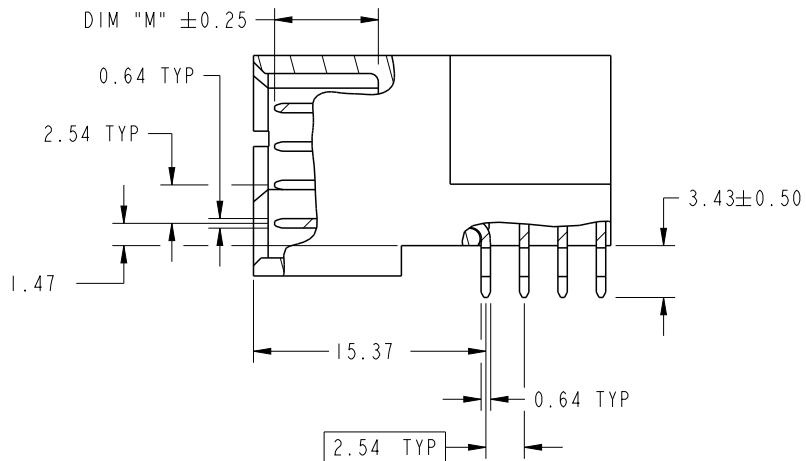


CODE	DIM "M" MATING LENGTH	CONTACT TYPE
SD	[6.86]	SIGNAL
SC	[6.86]	SIGNAL
SB	[6.86]	SIGNAL
SA	[6.86]	SIGNAL
PX	[N/A]	POWER

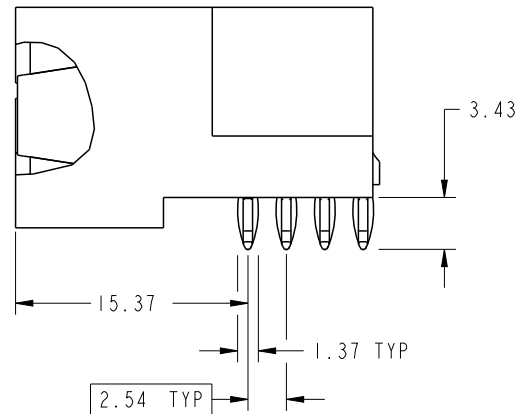
spec ref	*	dr	Sky Chen	2013/01/18	projection 	MM ←→	size	A4	scale	1:1
tolerance std	TOLERANCES UNLESS OTHERWISE SPECIFIED	eng	Jackie Huang	2013/06/30			ecn no	-		
SEE NOTE		chr	-	-			rel level	Released		
surface	linear	0.X	±0.5	 www.fci.com	title 8P + 24S RIGHT ANGLE PRESS FIT HEADER	dwg no 51722-10802400CB	rev A			
		0.XX	±0.25							
		0.XXX	±0.1							
	angular	0°	±2°	cat. no.	-	Product - Customer Drw	sheet 1 of 4			

PRODUCT NUMBER

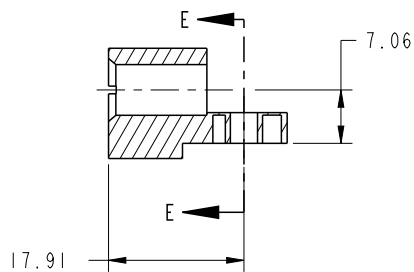
51722-10802400CB_
NOTE: 3



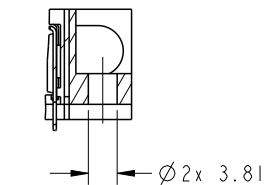
BROKEN-OUT SECTION A-A
SCALE 2:1



BROKEN-OUT SECTION B-B
SCALE 2:1



SECTION C-C



PARTIAL SECTION E-E

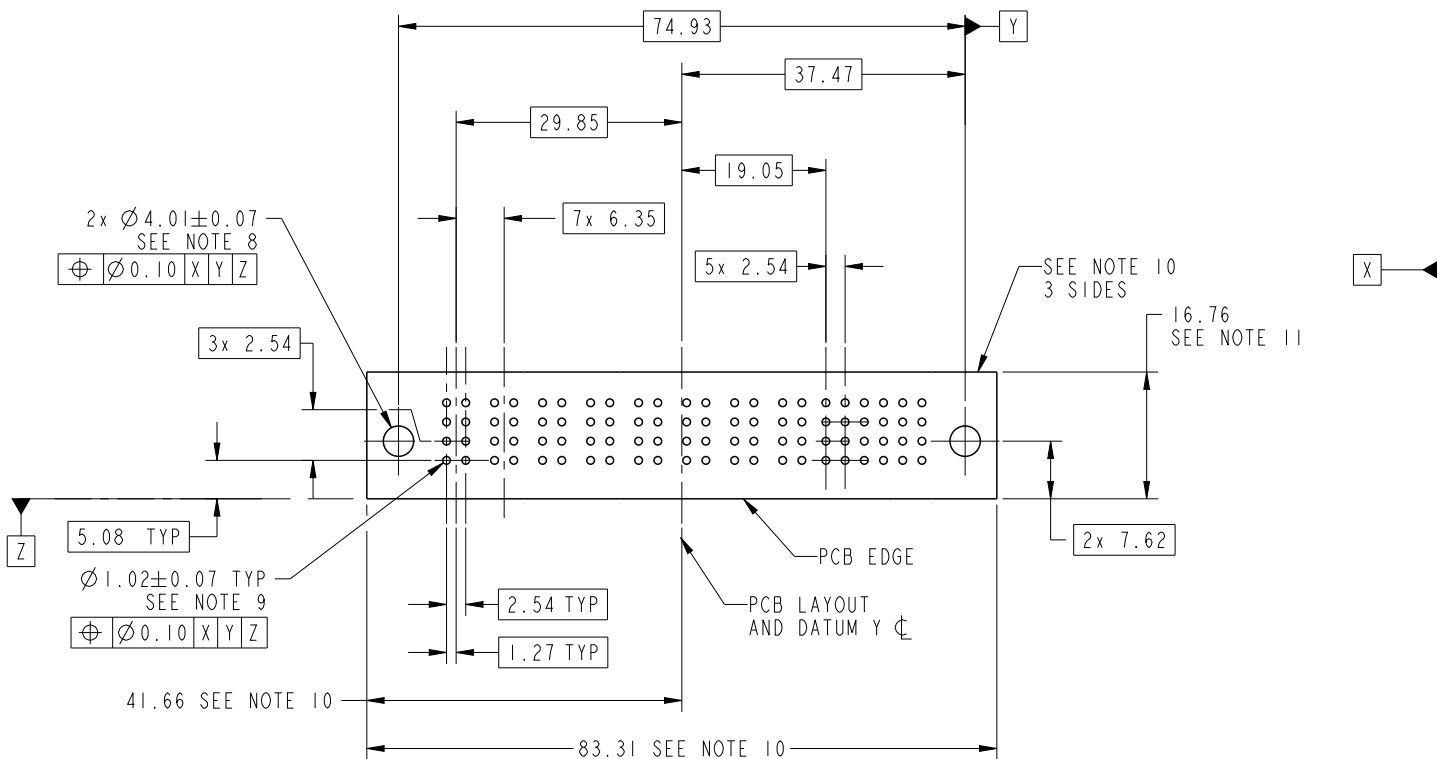
dr	Sky Chen	2013/01/18	projection 	MM ←→	size	A4	scale	1:1	
eng	Jackie Huang	2013/06/30			ecn no	-			
chr	-	-			rel level	Released			
appr	Pei-Ming Zheng	2013/06/30	product family	PwrBlade					
		title	8P + 24S RIGHT ANGLE PRESS FIT HEADER		dwg no	51722-10802400CB		rev	A
www.fci.com		cat. no.	-	Product - Customer Drw			sheet 2 of 4		



Copyright FCI.

PRODUCT NUMBER

51722-10802400CB_
NOTE: 3



RECOMMENDED PCB LAYOUT

dr	Sky Chen	2013/01/18	projection 	MM 	size	A4	scale	1:1
eng	Jackie Huang	2013/06/30			ecn no	-		
chr	-	-			rel level	Released		
appr	Pei-Ming Zheng	2013/06/30	product family	PwrBlade	rel level	Released		
	title	8P + 24S RIGHT ANGLE PRESS FIT HEADER		dwg no	51722-10802400CB	rev	A	
www.fci.com	cat. no.	-	Product - Customer Drw	sheet 3 of 4				

PRODUCT NUMBER
 51722-10802400CB_
 NOTE: 3

NOTES:

1. DIMENSIONS AND TOLERANCES ARE IN ACCORDANCE WITH ASME Y14.5M, 1994 UNLESS OTHERWISE SPECIFIED.

CONNECTOR NOTES:

- 2. HOUSING MATERIAL: UL 94 V-0 GLASS FILLED HIGH-TEMP THERMOPLASTIC
 POWER CONTACT MATERIAL: COPPER ALLOY
 SIGNAL PIN MATERIAL: COPPER ALLOY
- 3. SEE ITEM 3 & 4 IN PRINT 10064183 FOR PLATING SPEC OF 51722-10802400CB AND 51722-10802400CBLF RESPECTIVELY.
- 4. MANUFACTURER'S NAME, DATE CODE AND OPTIONAL P/N TO APPEAR ON THIS SURFACE. THE MARK CAN BE OMITTED IF THERE IS NOT ENOUGH SPACE ON THIS SURFACE.
- 5. PRODUCT SPECIFICATION GS-12-149.
 APPLICATION SPECIFICATION BUS-20-067.
- 6. PACKAGED IN TRAYS.

PCB NOTES:

- 7. ALL HOLE DIAMETERS ARE FINISHED HOLE SIZE.
- 8. MOUNTING HOLES, WHERE APPLICABLE, ARE UNPLATED.
- 9. $\varnothing 1.151 \pm 0.025$ DRILLED HOLES PLATED WITH 0.008 MIN SnPb OR Sn OVER 0.03 TO 0.08 Cu PLATING TO ACHIEVE $\varnothing 1.02 \pm 0.07$ HOLE.
- 10. CONNECTOR KEEP-OUT ZONE.



Copyright FCI.

dr	Sky Chen	2013/01/18	projection 	MM 	size	A4	scale	1:1	
eng	Jackie Huang	2013/06/30			ecn no	-			
chr	-	-			product family	PwrBlade	rel level	Released	
appr	Pei-Ming Zheng	2013/06/30			title	8P + 24S		rev	A
www.fci.com			cat. no.	-	Product - Customer Drw		sheet 4 of 4		
			dwg no	51722-10802400CB					

Mouser Electronics

Authorized Distributor

Click to View Pricing, Inventory, Delivery & Lifecycle Information:

[FCI / Amphenol:](#)

[51722-10302400AA](#) [51722-10103600AALF](#) [51722-10201200AALF](#) [51722-10302400AALF](#) [51722-10302400ABLF](#)
[51722-10401600AALF](#) [51722-10402400AALF](#) [51722-10502400AALF](#) [51722-10600800AALF](#) [51722-10602000AALF](#)
[51722-10603600AALF](#) [51722-10702400AALF](#) [51722-10802400AALF](#) [51722-10802400ABLF](#) [51722-10901600AALF](#)
[51722-11103200AALF](#) [51722-11202000AALF](#) [51722-11402400AALF](#) [51722-11702800AALF](#) [51722-12002000ABLF](#)
[51722-10601600AALF](#) [51722-10601600ABLF](#) [51722-10801200ABLF](#) [51722-10406000AALF](#) [51722-11002400ABLF](#)
[51722-10602000AA](#) [51722-10802400AB](#) [51722-10201600AALF](#) [51722-10603200AALF](#) [51722-11201200AALF](#)
[51722-10704000AALF](#) [51722-10301200AALF](#) [51722-10202400AALF](#) [51722-10303200AALF](#) [51722-10401200AA](#)
[51722-10401200AALF](#) [51722-10412000AALF](#) [51722-10602400AALF](#) [51722-10200400AALF](#) [51722-10203200AALF](#)
[51722-10902400AALF](#) [51722-10202000AALF](#) [51722-10801600AALF](#) [51722-10400800ABLF](#) [51722-10701600ABLF](#)
[51722-10403200AALF](#) [51722-10203600AALF](#) [51722-10802800ABLF](#) [51722-10901200ABLF](#) [51722-11000800ABLF](#)
[51722-10204800AALF](#) [51722-10301600AALF](#) [51722-10204000AALF](#) [51722-11002800AALF](#) [51722-12001200AALF](#)
[51722-10402000AALF](#) [51722-10704000ABLF](#) [51722-11001600AALF](#) [51722-10202000ABLF](#) [51722-10207600AALF](#)
[51722-10604000AALF](#) [51722-10400800AALF](#) [51722-11002000ABLF](#) [51722-10801600ABLF](#) [51722-10603600CBLF](#)
[51722-B0602400AALF](#) [51722-10902000ABLF](#) [51722-10702400ABLF](#) [51722-11202400ABLF](#) [51722-10800800AALF](#)
[51722-10802400CBLF](#) [51722-10201200ABLF](#) [51722-10401200CBLF](#) [51722-10402400ABLF](#) [51722-10602000ABLF](#)
[51722-11001600ABLF](#) [51722-11002400AALF](#) [51722-11102400AALF](#) [51722-10606000AALF](#) [51722-11301200AALF](#)
[51722-11401200AALF](#) [51722-10500800AALF](#) [51722-10214400ABLF](#) [51722-10602000CBLF](#) [51722-10404800AALF](#)
[51722-10610400AALF](#) [51722-10602400CBLF](#) [51722-10800800ABLF](#) [51722-11002800ABLF](#) [51722-10602400ABLF](#)
[51722-10200800AALF](#) [51722-10601200AALF](#) [51722-10501600AALF](#) [51722-10303600CBLF](#)