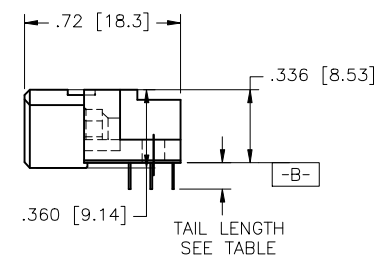
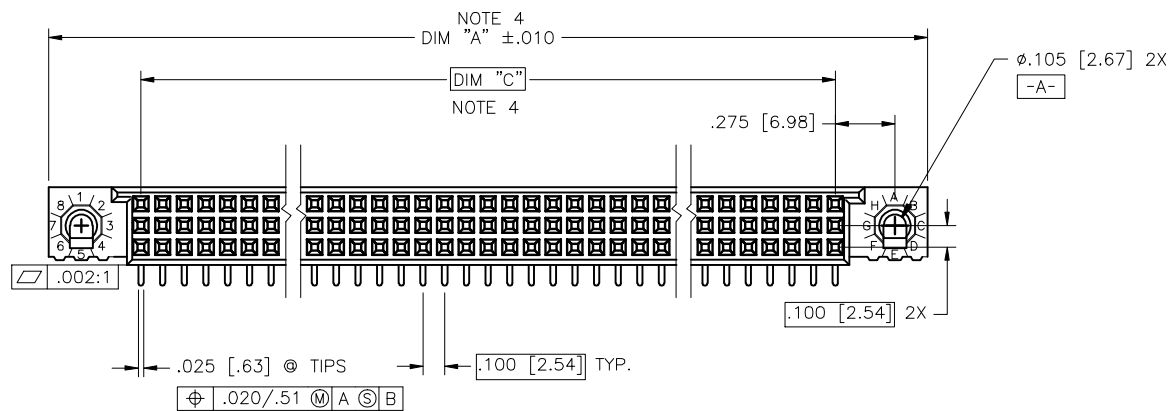
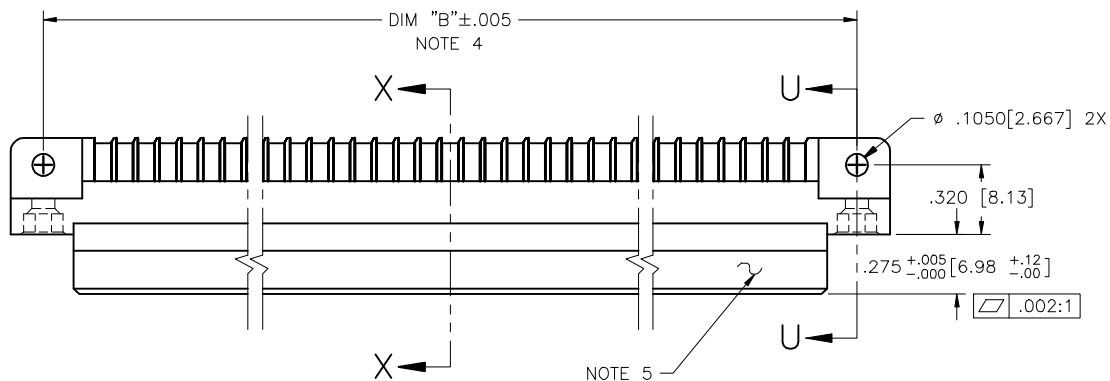


PRODUCT NUMBER
SEE TABLE



mat'l. code SEE NOTE 3				surface ISO 1302	tolerance ISO 406 ISO 1101	projection ISO 1502	product family HPC
ltr	ecn no	dr	date	tolerances unless otherwise specified		INCH/MM	title 3 ROW R/A RECEPTACLE GENERIC, MOUNT, S.T.B. 0 G.P.
H	V92128	HTB	6/3/99	angles	linear		
J	V00228	JWS	1/21/00				
K	V20646	MEM	5/24/02	0'±2'		scale 1:1	
L	V05-0630	DCH	7/05/05	dr	D.HORCHLER	7/5/05	dwg no 50579 sheet 1 of 2 size A3
M	V05-1041	HTB	11/14/05	engr	D.HORCHLER	7/5/05	
N	M06-0255	MHT	7/06/06	chr	T.BREWBAKER	7/5/05	type Product Customer Drawing
P	M08-0308	MHT	10/23/08	appd	D.HORCHLER	7/5/05	
sheet	revision	P	P				
index	sheet	1	2				

PRODUCT NUMBER	NUMBER OF POSITIONS	TAIL LENGTH ±.010/.25	CONTACT AREA PLATING NOTE 8
50579-1YYYY	YYY-NOTE 1	.125 / 3.18	30u"/.76u GOLD
50579-3YYYY	YYY-NOTE 1	.125 / 3.18	50u"/1.27u GOLD
50579-5YYYY	YYY-NOTE 1	.125 / 3.18	30u"/.76u GXT
50579-5YYYYLF	YYY-NOTE 1	.125 / 3.18	30u"/.76u GXT
50579-1YYF	YYY-NOTE 1	.145 / 3.68	30u"/.76u GOLD
50579-3YYF	YYY-NOTE 1	.145 / 3.68	50u"/1.27u GOLD
50579-5YYF	YYY-NOTE 1	.145 / 3.68	30u"/.76u GXT
50579-5YYFLF	YYY-NOTE 1	.145 / 3.68	30u"/.76u GXT
50579-1YYH	YYY-NOTE 1	.180 / 4.57	30u"/.76u GOLD
50579-3YYH	YYY-NOTE 1	.180 / 4.57	50u"/1.27u GOLD
50579-5YYH	YYY-NOTE 1	.180 / 4.57	30u"/.76u GXT
50579-5YYHLF	YYY-NOTE 1	.180 / 4.57	30u"/.76u GXT

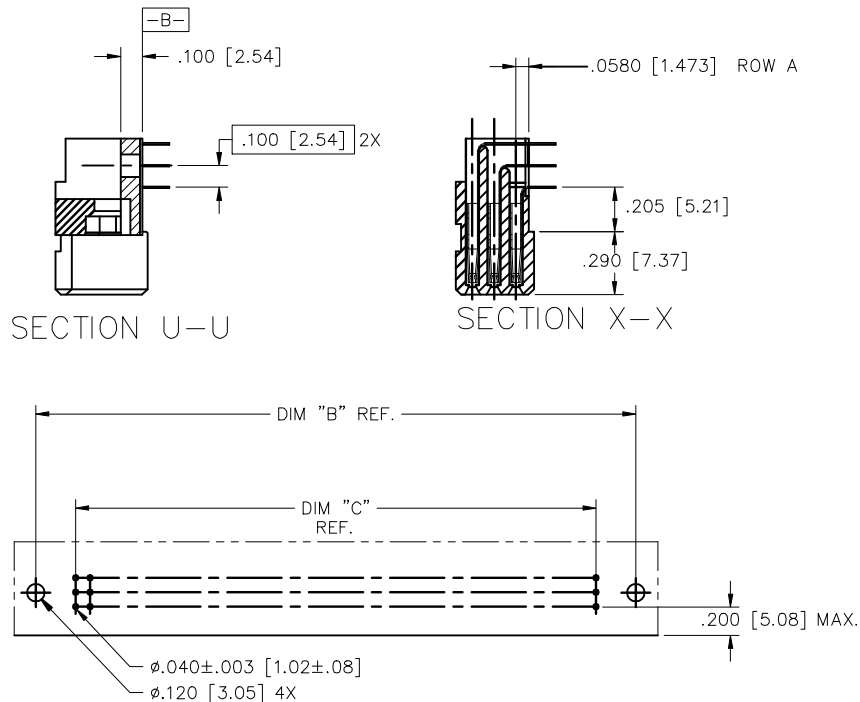
NOTES:

- ① PRODUCT NUMBERING CODE:
50579 - X YYY Z LF
- LEAD FREE (OPTIONAL WITH GXT VERSION)
 - TAIL LENGTH (SEE TABLE)
 - NO. OF POSITIONS (NOTE 2)
 - PLATING (SEE TABLE)
 - BASE NUMBER

PRODUCT NUMBERING CODE FOR
SELECT LOAD PART NUMBERS:

- 50579 - XX YYY LF
- LEAD FREE (OPTIONAL WITH GXT VERSION)
 - SEQUENCE NUMBER
 - ALWAYS 'XX'
 - BASE NUMBER

- ② THIS PRODUCT IS CONFIGURED IN SIZES OF 6 THRU 80 COLUMNS IN INCREMENTS OF ONE.
i.e.: 6,7,8,9.....79,80.
- ③ HOUSING MATERIAL: GLASS AND MINERAL FILLED HIGH TEMP. THERMOPLASTIC. FLAME RETARDANT PER UL94V-0. COLOR: BLACK.
CONTACT MATERIAL: BeCu
- DISTANCE CALCULATIONS:
DIMENSION "A" = .100/2.54 x NO. OF COLUMNS + .75/19.1
DIMENSION "B" = .100/2.54 x NO. OF POSITIONS + .450/11.43
DIMENSION "C" = .100/2.54 x NO. OF POSITIONS - .100/2.54.
- ⑤ MANUFACTURE'S NAME, PART NUMBER AND LOT CODE TO APPEAR ON THIS SURFACE PER BUS-12-108.
6. THIS PRODUCT (WITH "LF" SUFFIX) MEETS EUROPEAN UNION DIRECTIVES AND OTHER COUNTRY REGULATIONS AS DESCRIBED IN GS-22-008.
7. THIS HOUSING WILL WITHSTAND EXPOSURE TO 260 DEGREES C PEAK TEMPERATURE FOR 10-30 SECONDS IN A CONVECTION, INFRA-RED OR VAPOR PHASE REFLOW OVEN.
- ⑧ PLATING OPTIONS:
MAYBE EITHER GOLD OR GXT PLATED AT MANUFACTURER CHOICE



RECOMMENDED PCB LAYOUT
(ALL HOLES LOCATED ON .100 [2.54] GRID
UNLESS OTHERWISE SPECIFIED)

mat'l. code SEE NOTE 3		surface ISO 1302	tolerance ISO 1101	projection ISO 1001	product family HPC
tr	ecp no	dr	date	tolerances unless otherwise specified	title
P				angles linear XX±.01/XX±.03 XXX±.006/XXX±.013 O'±2'	3 ROW R/A RECEPTACLE
				scale 1:1	GENERIC, MOUNT, S.T.B. 0 G.P.
dr	D.HORCHLER	7/5/05			dwg no
engr	D.HORCHLER	7/5/05			sheet 2 of 2
chr	T.BREWBAKER	7/5/05			size A3
appd	D.HORCHLER	7/5/05			type Product Customer Drawing
sheet index	revision sheet				

Mouser Electronics

Authorized Distributor

Click to View Pricing, Inventory, Delivery & Lifecycle Information:

[FCI / Amphenol:](#)

[50579-5096E](#) [50579-1090E](#) [50579-5090ELF](#) [50579-5150HLF](#) [50579-5096ELF](#)