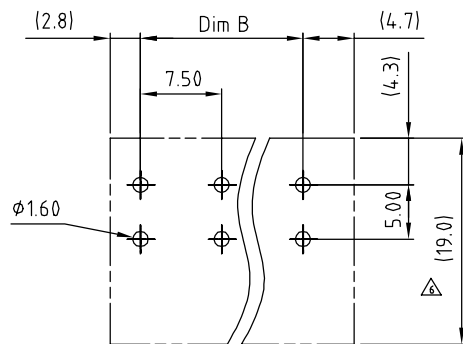
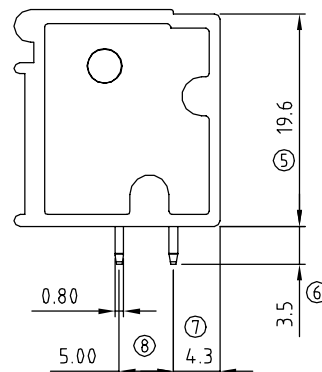


N=Number of Poles



P.C.B LAYOUT



N = Number of poles
Dim A=Nx7.5
Dim B=(N-1)x7.5

	Dim A	Dim B
2-6p	±0.20	±0.20
7-12p	±0.30	±0.30
13-16p	±0.40	±0.40

SIGN	DATE	DESCRIPTION	APPROVER
△	11/01'05	Standard spec is changed.	Marivn
△	02/01'07	Soldering temperature is changed from 245°C to 250°C	Marivn
△	04/15'10	12Poles to 16Poles	Tason
△	08/25'10	Add the tolerance table	Tason
△	08/25'10	Operating tem. changed from -30° ~ +105° to -40° ~ +115°	Tason
△	08/25'10	Dim 15.2 TO 19.0	Tason
△	08/25'10	Add the Measuring Symbol	Tason
△	03/29'10	The wire inlet is changed.	Tason

Material

- Terminal body
(metal housing): steel stamped
- Terminal screw: Steel Zinc plating "-" slot type
- Contacts: Brass
- Surface of solder tail: Tin plated
- Insulator (housing): Thermoplastic (UL94 V-0)

△ Electrical cULus

- Voltage rating: 300VAC
- Current rating: 20A
- Wire range:
- Solid wire(AWG): 12-22
- Stranded wire(AWG): 12-22
- Torque(Lb-In): 2.4
- Screw: M2.5
- Wire strip length: 10-11mm
- Withstanding Voltage: 1.6KV
- Operating temperature: -40°C to +115°C
- Soldering temperature: 250°C±10°C/5 Sec
- Safety Approval: cULus

TR xx 25 x 0 xxxx G

02 2Poles	0 Black (RAL9005)	0000: "@" Logo	RoHS
03 3Poles	2 Red (RAL3001/D)	000A: "ANYTEK" Logo	Pb<40,000ppm
...	3 Orange(RAL2011/P)		
16 16Poles	4 Yellow(RAL1018/A)	Any special item by customer request.	
△	5 Green(RAL6018/T)	please contact sales department.	
	6 Blue (RAL5015/A)		
	8 Grey(RAL7035/D)		
	C Green(RAL 6018/U)		

ANYTEK

CUSTOMER COPY

ALL RIGHTS RESERVED. REPRODUCTION OR ISSUE TO THIRD PARTIES IN ANY FORM WHATEVER IS NOT PERMITTED WITHOUT WRITTEN AUTHORITY FROM THE PROPRIETOR. PROPERTY OF ANYTEK TECHNOLOGY CO., LTD

TITLE	TR 7.5 Series Vertical (90D wire inlet)				
PART NO.	TRxx25x0xxxxG		DWG NO.	8TR0102	
APPROVED	CHECKED	DESIGNED	DRAWN	CUST NO.	Tolerance
		Tason 2011.03.29	Tason 2010.04.15		X. ±0.50
					X.X ±0.30
					X.XX ±0.10
					X° ±1°
				SHEET: 01/01	UNIT: mm
					SCALE: NONE
					REV.: G

Mouser Electronics

Authorized Distributor

Click to View Pricing, Inventory, Delivery & Lifecycle Information:

Amphenol:

[TR0225500000G](#) [TR0325500000G](#) [TR0425500000G](#) [TR0525500000G](#) [TR0625500000G](#) [TR0725500000G](#)
[TR0825500000G](#) [TR0925500000G](#) [TR1025500000G](#) [TR1125500000G](#) [TR1225500000G](#) [TR1325500000G](#)
[TR1425500000G](#) [TR1525500000G](#) [TR1625500000G](#)