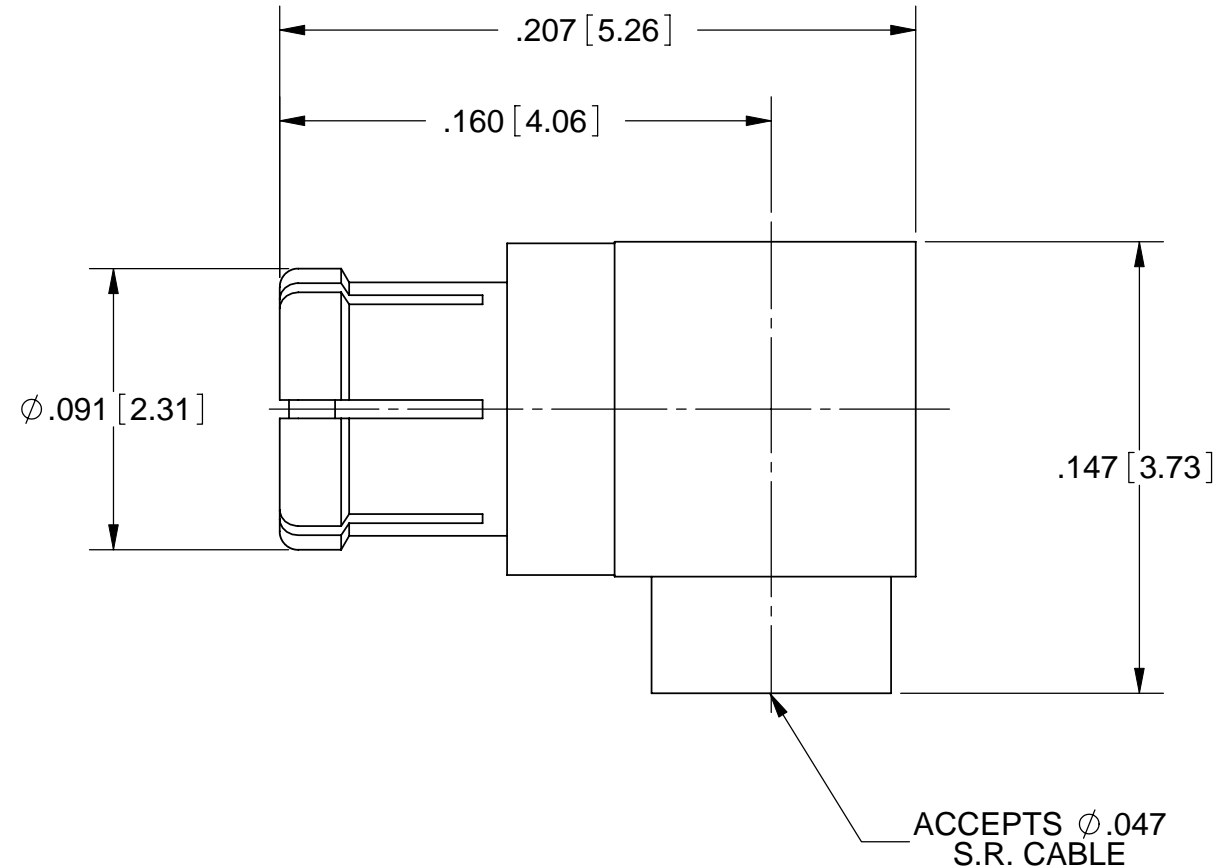
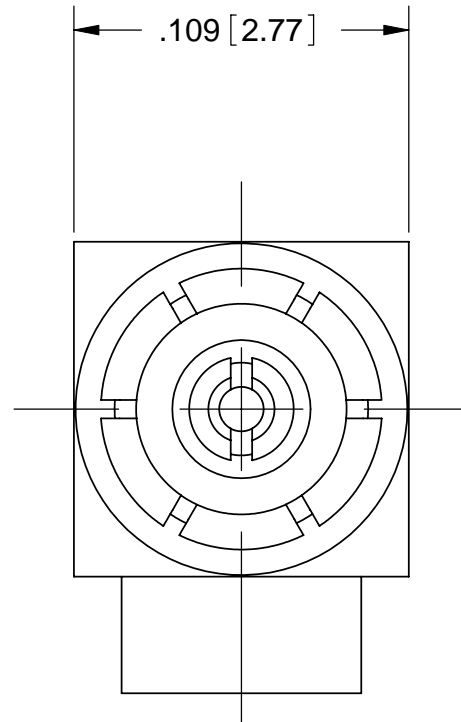


ROHS COMPLIANT

# PRODUCT DATA DRAWING

REVISION HISTORY			
REV	DESCRIPTION	DATE	APPROVED
-	DCN 36005	08/08	STW



**MATERIAL:**

BODY,  
EXPANSION PLUG &  
CONTACT:

BERYLLIUM COPPER PER ASTM B196,  
ALLOY No. UNS C17300, TD04

INSULATOR:

PTFE PER ASTM D1710, TYPE I, GRADE 1, CLASS B

## FINISH:

**BODY,  
EXPANSION PLUG &  
CONTACT:**

GOLD PER ASTM B488, TYPE II,  
CODE C, CLASS 1.27; OVER NICKEL  
PER AMS-QQ-N-290, CLASS 1, .00005" MIN.

EXPANSION PLUG:

PASSIVATED PER AMS-2700, TYPE 2

## PERFORMANCE:

IMPEDANCE:

50 OHMS

FREQ. RANGE:

DC TO 20.0 GHz

VSWR:

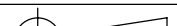
1.20:1 DC TO 10.0 GHz

DWV:

325 VRMS

OPERATING TEMP.:

-55°C TO +125°C

MATERIAL:	SEE NOTES	DIMENSIONS ARE IN INCHES TOLERANCES:		UNLESS OTHERWISE SPECIFIED		<b>SV Microwave, Inc.</b>			
FINISH:	SEE NOTES	FRACTIONAL: $\pm 1/64$ ANGULAR: X° $\pm 1^{\circ}0'$ X'X" $\pm 15'$		1) ALL DIMENSIONS ARE IN INCHES [MILLIMETERS] 2) ALL DIMENSIONS ARE AFTER PLATING. 3) BREAK CORNERS & EDGES .005 R. MAX. 4) CHAM. 1ST & LAST THREADS. 5) SURFACE ROUGHNESS 63μMIL-STD-10. 6) DIA.'S ON COMMON CENTERS TO BE CONCENTRIC WITHIN .005 T.I.R. 7) REMOVE ALL BURRS		2400 Centrepark West Drive, Suite 100 West Palm Beach, FL 33409			
SURFACE AREA:	N/A	DECIMAL: .X $\pm .030$ .XX $\pm .010$ .XXX $\pm .005$				TITLE: SMPM FEMALE R/A FOR Ø.047 SEMI-RIGID CABLE			
PROPRIETARY		INTERPRET DIMENSIONS AND TOLERANCES PER ASME Y14.5M - 1994							
THE INFORMATION CONTAINED IN THIS DRAWING IS THE SOLE PROPERTY OF SV MICROWAVE, INC. ANY REPRODUCTION IN PART OR AS A WHOLE WITHOUT THE WRITTEN PERMISSION OF SV MICROWAVE, INC IS PROHIBITED.		THIRD ANGLE PROJECTION		DRAWN: DAL 08/11/08		SIZE B		CAGE CODE 95077	DWG. NO. 3269-4001
				CHECKED: STW 08/11/08					
				APPROVED: STW 08/11/08		SCALE: 16:1			SHEET 1 OF 1

# Mouser Electronics

Authorized Distributor

Click to View Pricing, Inventory, Delivery & Lifecycle Information:

[Amphenol:](#)

[3269-4001](#)