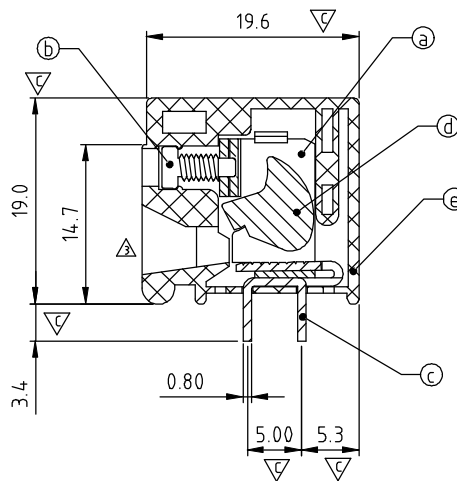


P.C.B LAYOUT
TOP VIEW



N = Number of poles

Dim A=N×5.0+2.5

Dim B=(N-1)×5.0



	Dim A	Dim B
1-6p	±0.20	±0.20
7-12p	±0.25	±0.25
13-18p	±0.35	±0.35
19-24p	±0.40	±0.40

SIGN	DATE	DESCRIPTION	APPROVER
△	11/01'05	Standard spec is changed.	Marivn
△	02/01'07	Soldering temperature is changed from 245°C to 250°C	Marivn
△	03/29'10	The wire inlet is changed.	Tason
△	10/22'13	Update the drawing	Guoxue

THIS IS CAD DRAWING, DO NOT REVISE MANUALLY!!!

Material

- Item ① Terminal body(metal housing): steel stamped Zinc plating
- Item ② Terminal screw: Steel Zinc plating “-” slot type
- Item ③ Contacts: Brass, Tin plated
- Item ④ Firm wire chunk: steel Zinc plating
- Item ⑤ Insulator (housing): Thermoplastic (UL94V-0)

△ Electrical cULus

- Voltage rating: 300VAC
- Current rating: 20A
- Wire range:
 - Solid wire(AWG): 12-22
 - Stranded wire(AWG): 12-22
- Torque(Lb-In): 2.4
- Screw: M2.5
- Wire strip length: 10-11mm
- Withstanding Voltage: 1.6KV
- Operating temperature: -40°C to +115°C
- Soldering temperature: 260°C±5°C/5 Sec
- Safety Approval: cULus
- Critical dimension: △

△ TR xx 05 x 1 xxxx G

- 01 1Poles
- 02 2Poles
-
- 24 24Poles

COLOR

- 0 Black (RAL9005)
- 2 Red (RAL3001/D)
- 3 Orange(RAL2011/P)
- 4 Yellow(RAL1018/A)
- 5 Green(RAL6018/T)
- 6 Blue (RAL5015/A)
- 8 Grey(RAL7035/D)
- C Green(RAL 6018/U)

- 0000: “@” Logo
- 000A: “ANYTEK” Logo
- Any special item by customer request. please contact sales department.
- G RoHS compliant (lead<4%) In copper Alloy

ANYTEK

CUSTOMER COPY

ALL RIGHTS RESERVED. REPRODUCTION OR ISSUE TO THIRD PARTIES IN ANY FORM WHATEVER IS NOT PERMITTED WITHOUT WRITTEN AUTHORITY FROM THE PROPRIETOR. PROPERTY OF ANYTEK TECHNOLOGY CO., LTD

TITLE		TR 5.0 Series Horizontal (180D wire inlet)			
PART NO.	TRxx05x1xxxxG			DWG NO.	8TR0001
APPROVED	CHECKED	DESIGNED	DRAWN	CUST NO.	
		Guoxue 2013.10.22	Guoxue 2013.10.22		Tolerance
					X. ±0.50
					X.X ±0.30
					X.XX ±0.10
					X° ±1°
				SHEET: 01/01	REV.: F

Mouser Electronics

Authorized Distributor

Click to View Pricing, Inventory, Delivery & Lifecycle Information:

Amphenol:

<u>TR0105510000G</u>	<u>TR0205510000G</u>	<u>TR020551A000G</u>	<u>TR0305510000G</u>	<u>TR0405510000G</u>	<u>TR040551A000G</u>
<u>TR0505510000G</u>	<u>TR050551A000G</u>	<u>TR0605510000G</u>	<u>TR060551A000G</u>	<u>TR0705510000G</u>	<u>TR070551A000G</u>
<u>TR0805510000G</u>	<u>TR080551A000G</u>	<u>TR0905510000G</u>	<u>TR1005510000G</u>	<u>TR100551A000G</u>	<u>TR1105510000G</u>
<u>TR110551A000G</u>	<u>TR1205510000G</u>	<u>TR120551A000G</u>	<u>TR1305510000G</u>	<u>TR130551A000G</u>	<u>TR1405510000G</u>
<u>TR140551A000G</u>	<u>TR1505510000G</u>	<u>TR1605510000G</u>	<u>TR160551A000G</u>	<u>TR1705510000G</u>	<u>TR1805510000G</u>
<u>TR180551A000G</u>	<u>TR1905510000G</u>	<u>TR2005510000G</u>	<u>TR2105510000G</u>	<u>TR2205510000G</u>	<u>TR220551A000G</u>
<u>TR2305510000G</u>	<u>TR2405510000G</u>	<u>TR240551A000G</u>	<u>TR0205010000G</u>	<u>TR0805810000G</u>	<u>TR1005010000G</u>