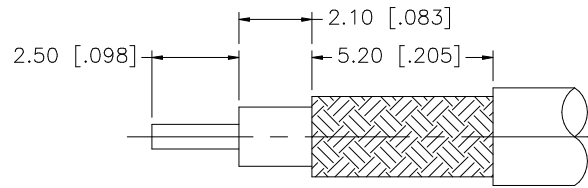
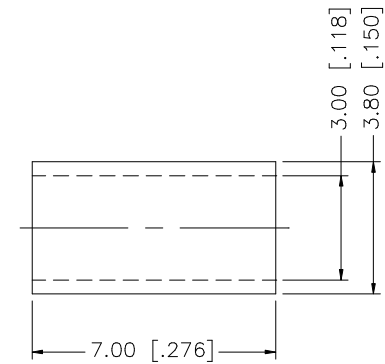
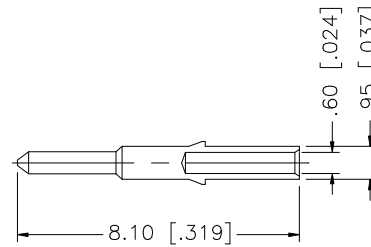
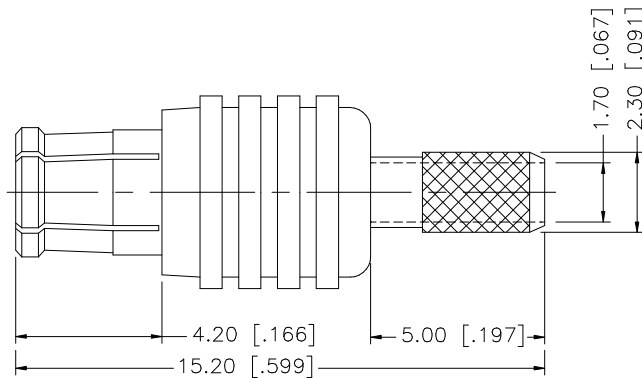


REV.	DATE	DESCRIPTION
A	01/13/99	UPDATE DRAWING
B	05/01/04	UPDATE DRAWING FORMAT
C	11/28/06	NOTE 2: CONTACT PIN TO SOLDER.



RECOMMENDED CABLE STRIPPING DIMENSIONS



NOTE:

1. CRIMPED FERRULE HEX CRIMP SIZE .128"
2. CONTACT PIN TO SOLDER.

REV.	DATE	DESCRIPTION
8		
7		
6		
5	FERRULE	COPPER
4	CONTACT PIN	BRASS
3	INSULATOR	TEFLON
2	BODY	BER. COPPER
1	HOUSING	BRASS
DESCRIPTION	MATERIAL	FINISH
		QTY
UNLESS OTHERWISE SPECIFIED DIMENSIONS ARE IN MILLIMETERS. DIMENSIONS IN [] ARE IN INCHES AND FOR CUSTOMER REFERENCE ONLY.		
UNLESS OTHERWISE SPECIFIED TOLERANCES FOR MILLIMETERS ARE: 0.5 - 8mm ± 0.20mm 8 - 30mm ± 0.40mm 30 - 120mm ± 0.50mm		
UNLESS OTHERWISE SPECIFIED TOLERANCES FOR INCHES ARE: .020 - .315 = ± 0.007" .315 - 1.180 = ± 0.015" 1.180 - 4.724 = ± 0.020"		
DO NOT SCALE DRAWING		
APPROVALS	DATE	
DRAWN G.R.S.	11/28/06	
CHECKED		
ISSUED		
SHEET 1 OF 1		
CAD FILE	C:/252/252103.DWG	
PART DESCRIPTION		
MCX CRIMP PLUG (FOR RG-174/U,188A/U,316/U)		
PART NO.		252103
DWG. NO.	252103.DWG	REV. C
SIZE	A	SCALE NA

Amphenol Connex

Mouser Electronics

Authorized Distributor

Click to View Pricing, Inventory, Delivery & Lifecycle Information:

[Amphenol:](#)

[252103](#)