

PRODUCT NUMBER

20020732-XXXXXXLF

20020732-

PITCH

U: 10.16 mm

POLES

02: 2 POLES
03: 3 POLES
04: 4 POLES


12: 12 POLES

LF : DENOTED RoHS COMPATIBLE

1 : STANDARD PRODUCT
W/ BOX PACKING

SCREW CODE

CODE	SCREW TYPE	AVAILABILITY
A	-/+	ON REQUEST ONLY
B	-	STANDARD

PROPERTY TABLE			
FCI SERIES NAME			41-1016
PITCH (mm)			10.16
VOLTAGE RATING (VAC)			600
CURRENT RATING (A)			65
APPLICABLE WIRE RANGE (AWG)		1-WIRE	6~20
		2-WIRE	10
WIRE CROSS SECTION (mm ²)	SOLID	1-WIRE	16
		2-WIRE	6
	STRANDED	1-WIRE	16
		2-WIRE	6
OPENING CONTACT HOUSING(mm ²)			5.5x6.1
WIRE STRIP LENGTH(mm)			10~11
TORQUE +/-10% (N-M/Lb-in)			1.34/11.7
SCREW			M4.5x0.75
WITHSTANDING VOLTAGE (kV)			2.2
OPERATING TEMP. (°C)			-40~+115
SOLDERING TEMP. (°C)			250±10 (5 sec.)
POLES AVAILABLE			02~12
SAFETY CERTIFICATE			

HOUSING CODE

CODE	COLOR	AVAILABILITY
1	GREEN(RAL6018/T)	STANDARD
2	BLACK(RAL9005)	ON REQUEST ONLY
3	GREY(RAL7004/P)	ON REQUEST ONLY
4	BLUE(RAL5015/A)	ON REQUEST ONLY

NOTES:

1. MATERIALS:

1-1 HOUSING: THERMOPLASTIC RESIN, UL94V-0 RATED.

1-2 SCREW: STEEL, ZINC PLATED.

1-3 CLAMP: COPPER ALLOY, NICKEL PLATED.

1-4 TERMINAL: COPPER ALLOY TIN PLATED.

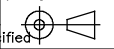
2. PRODUCT SPECIFICATION REFER TO FCI GS-12-625.

3. PRODUCT PACKING SPECIFICATION REFER TO FCI GS-14-1394.

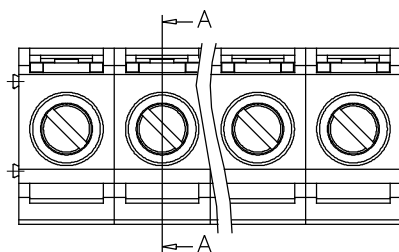
4. FCI, SAFETY CERTIFICATE LOGO AND SERIES NAME TO BE SHOWN ON PRODUCT SURFACE.

5. THE PRODUCTS WHERE THE PART NUMBER END IN "LF" MEET THE EUROPEAN UNION DIRECTIVE AND OTHER COUNTRY REGULATIONS AS DESCRIBED IN GS-22-008.

6. RECOMMENDED SOLDERING PROCESS BY WAVE SOLDER.

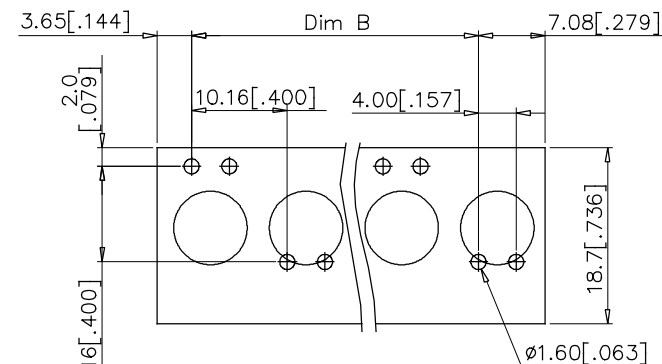
mat'l. code				surface ASME Y14.5	tolerance ASME Y14.5	projection 	product family TERMINAL BLOCK
ltr	ecn no	dr	date	tolerances unless otherwise specified		MM [INCH]	title
A	T10-0146	WL	091310	angles	X.±0.5		TERMINAL BLOCK
B	T10-0149	WL	091710	angles	X.X±0.3	scale	FIXED POWER PLUG, MIDDLE CONTACT
C	T10-0152	WL	092010	X'±1"	X.XX±0.1		dwg no
D	T10-0172	WL	102010	dr	WENDY CHEN	090710	sheet 1 of 2
E	T-005202	WL	081911	enr	JASON HSU	090710	size
F	T-010814	LS	050912	chr	GARY HSIEH	090710	A4
				appd	JOSEPH HSIA	090710	type
sheet	revision	F	F				CUSTOMER Drawing
index	sheet	1	2				

PRODUCT NUMBER	SERIES NAME	PITCH
20020732-UXXXXXXLF	41-1016	10.16 mm

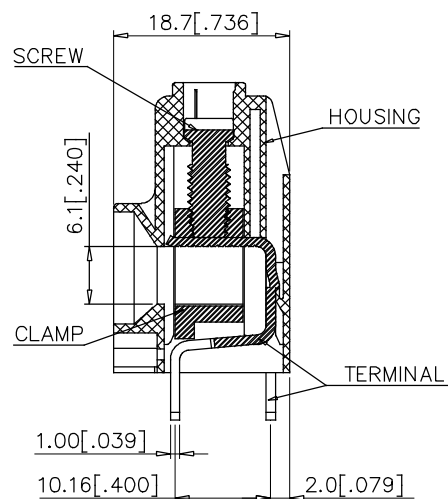
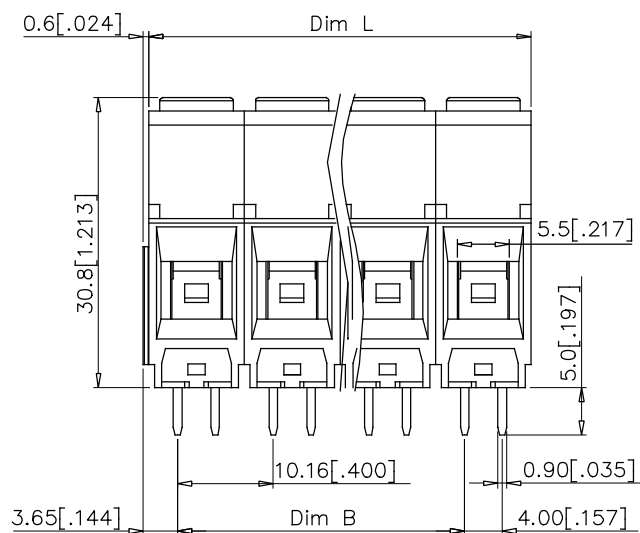


N = Number of poles
 Dim L = $N \times 10.16 [.400]$
 Dim B = $(N-1) \times 10.16 [.400]$

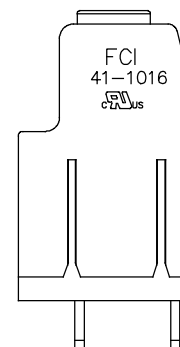
Poles	Tolerance
2-4p	$\pm 0.20 [.008]$
5-8p	$\pm 0.30 [.012]$
9-12p	$\pm 0.40 [.016]$



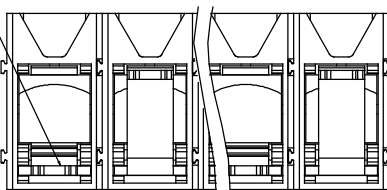
RECOMMENDED PCB LAYOUT



SEC. A-A



First pole with back contact



mat'l. code				surface ASME Y14.5 ✓	tolerance ASME Y14.5	projection MM [INCH]	product family TERMINAL BLOCK
ltr	ecn no	dr	date	tolerances unless otherwise specified			title
F				angles mm [INCH]	X.±0.5 X.X±0.3 X.XX±0.1	scale	TERMINAL BLOCK
				dr	WENDY CHEN 090710		FIXED POWER PLUG, MIDDLE CONTACT
				enr	JASON HSU 090710		dwg no
				chr	GARY HSIEH 090710		20020732
				appd	JOSEPH HSIA 090710		sheet 2 of 2
sheet index	revision	sheet					size A4
							type CUSTOMER Drawing

Mouser Electronics

Authorized Distributor

Click to View Pricing, Inventory, Delivery & Lifecycle Information:

Amphenol:

[20020732-U031A01LF](#) [20020732-U041B01LF](#) [20020732-U121B01LF](#) [20020732-U071B01LF](#) [KP0620500600G](#)
[KP0820501Q00G](#)

FCI / Amphenol:

[20020732-U081AZ1LF](#) [20020732-U061AP1LF](#)