



PRODUCT NUMBER

20020619-XXXXXXLF

20020619-□□□□A0□LF

PITCH  
M : 7.62 mm

POLES

02: 2 POLES  
03: 3 POLES  
04: 4 POLES  
:  
16: 16 POLES


LF : DENOTED ROHS COMPATIBLE

1 : STANDARD PRODUCT  
W/ BOX PACKING

HOUSING CODE

CODE	COLOR	AVAILABILITY
1	GREEN(RAL 6018/T)	STANDARD
2	BLACK	ON REQUEST ONLY
3	GREY(RAL 7004/P)	ON REQUEST ONLY
4	BLUE(RAL 5015/A)	ON REQUEST ONLY

## PROPERTY TABLE

FCI SERIES NAME	07-762
PITCH (mm)	7.62
VOLTAGE RATING (VAC)	300
CURRENT RATING (A)	32
WITHSTANDING VOLTAGE (kV)	1.6
OPERATING TEMP. (°C)	-40~+115
SOLDERING TEMP. (°C)	250±10 (5 sec.)
POLES AVAILABLE	02~16
SAFETY CERTIFICATE	

## NOTES:

## 1. MATERIALS

1-1 HOUSING: THERMALPLASTIC RESIN, UL 94V-0 RATED.

1-2 TERMINAL: COPPER ALLOY, TIN PLATED.

## 2. PRODUCTION SPECIFICATION REFER TO FCI GS-12-625.

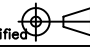

## 3. BOXED PACKAGING.

DETAILED PRODUCT PACKING SPECIFICATION REFER TO FCI GS-14-1394.

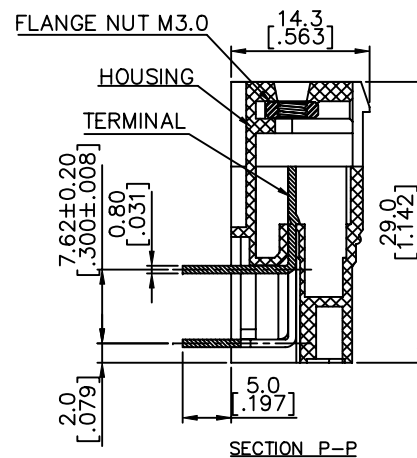
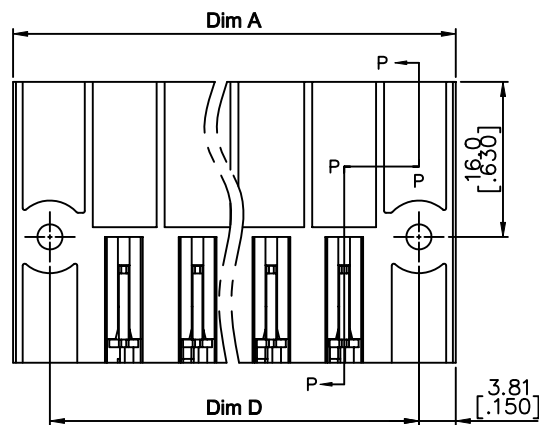
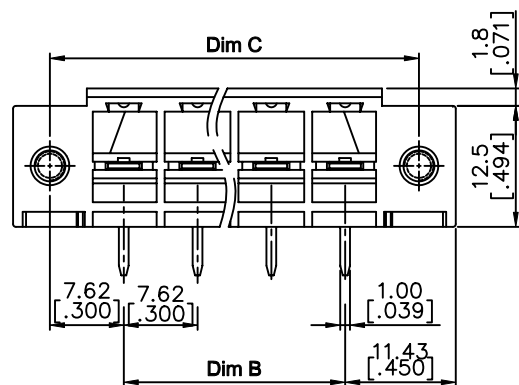
## 4. FCI, SAFETY CERTIFICATE LOGO AND SERIES NAME TO BE SHOWN ON PRODUCT SURFACE.

## 5. THE PRODUCTS WHERE THE PART NUMBER END IN "LF" MEET THE EUROPEAN UNION DIRECTIVE AND OTHER COUNTRY REGULATIONS AS DESCRIBED IN GS-22-008.

## 6. RECOMENDED SOLDERING PROCESS BY WAVE SOLDER.

mat'l. code				surface ASME Y14.5	tolerance ASME Y14.5	projection 	product family TERMINAL BLOCK
ltr	ecn no	dr	date	tolerances unless otherwise specified			title
A	T10-0062	WL	050710	angles	X.±0.5[.020]	MM	TERMINAL BLOCK PLUGGABLE, SOCKET, POWER, R/A W/FLANGE
B	T10-0155	WL	093010	hole	X.X±0.3[.012]	INCH	
C	T10-0187	WL	121410	flat	X.X±0.1[.004]	scale	
D	T-004860	WL	080411	dr	WENDY CHEN 042610		
				enrg	JASON HSU 042610		dwg no
				chr	GARY HSIEH 042610		20020619
				appd	JOSEPH HSIA 042610		sheet 1 of 2
sheet index	revision	D	D				size
	sheet	1	2				A4
							type
							CUSTOMER Drawing

PRODUCT NUMBER	SERIES NAME	PITCH
20020619-MXXXXXXLF	07-762	7.62 mm



N = Number of poles

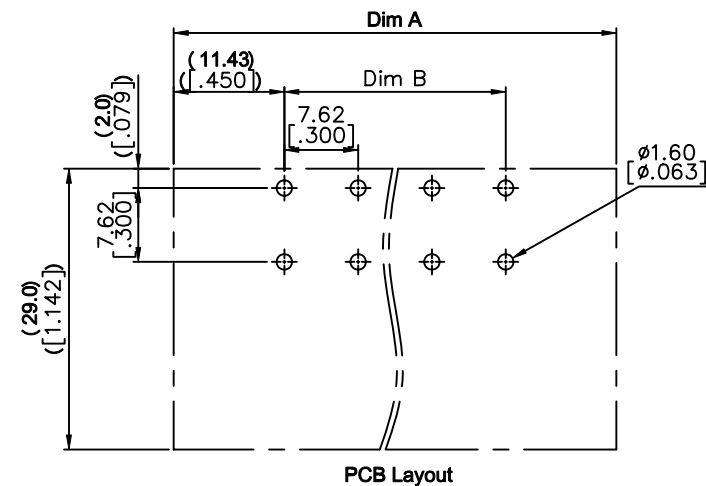
$$\text{Dim A} = (N-1) \times 7.62 [.300] + 22.86 [.900]$$

$$\text{Dim B} = (N-1) \times 7.62 [.300]$$

$$\text{Dim C} = (N+1) \times 7.62 [.300]$$

$$\text{Dim D} = (N+1) \times 7.62 [.300]$$

Poles	Dim A	Dim B	Dim C	Dim D
2-4p	±0.15 [.006]			
5-8p	±0.25 [.010]			
9-12p	±0.35 [.014]			
13-16p	±0.40 [.016]			



mat'l. code				surface ASME Y14.5 ✓	tolerance ASME Y14.5	projection MM INCH	product family TERMINAL BLOCK
ltr	ecn no	dr	date	tolerances unless otherwise specified			title
D				angles	X.±0.5 [.020]		TERMINAL BLOCK
				inlet	X.X±0.3 [.012]		PLUGGABLE, SOCKET, POWER, R/A
				X°±1°	X.XX±0.1 [.004]	scale	W/FLANGE
		dr	WENDY CHEN	042610		FCI	dwg no
		enr	JASON HSU	042610			sheet 2 of 2
		chr	GARY HSIEH	042610			size
		appd	JOSEPH HSIA	042610			A4
sheet index	revision sheet						type
							CUSTOMER Drawing

# Mouser Electronics

Authorized Distributor

Click to View Pricing, Inventory, Delivery & Lifecycle Information:

[Amphenol:](#)

[VC0301500000G](#) [VC0301000000G](#)

[FCI / Amphenol:](#)

[20020619-M032A01LF](#) [20020619-M022A01LF](#)