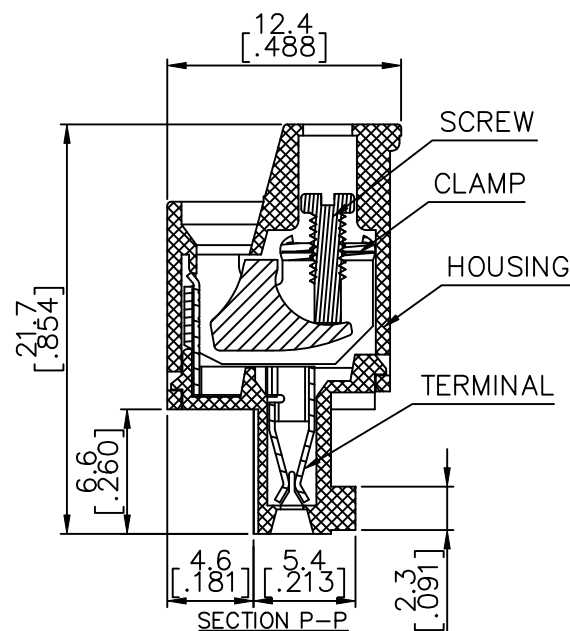
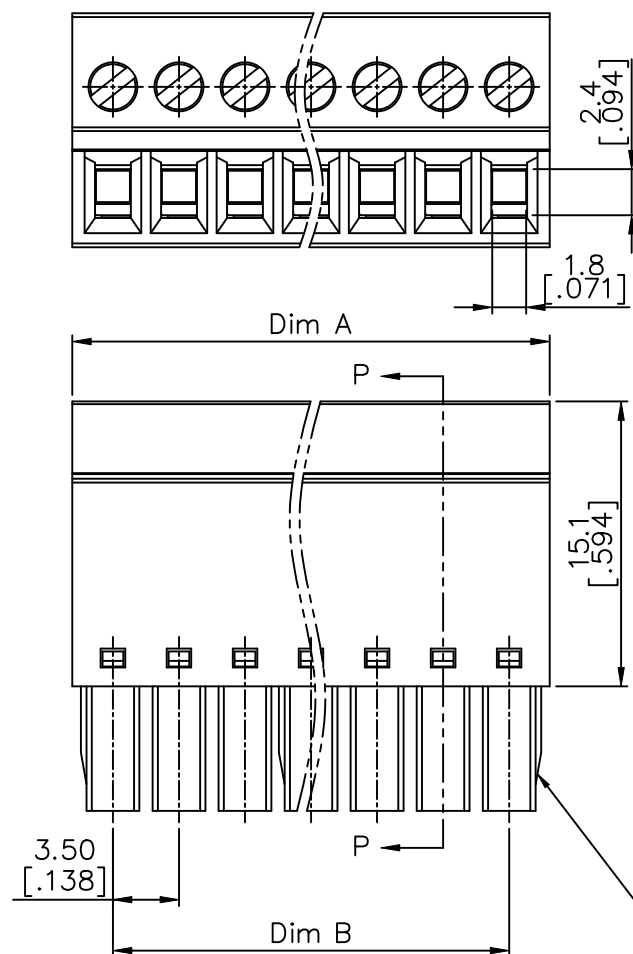


Printed: Sep 23, 2011

PRODUCT NUMBER	SERIES NAME	PITCH
20020013-CXXXXXXLF	03-350	3.50 mm



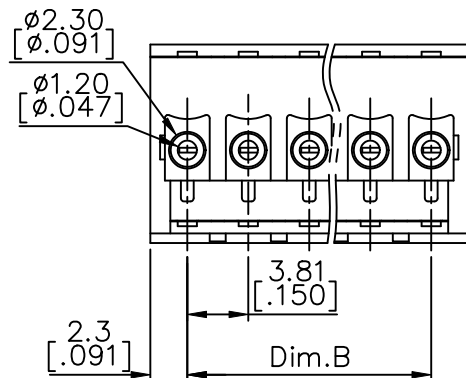
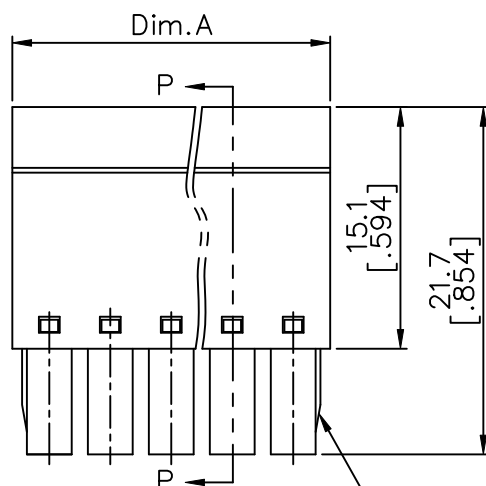
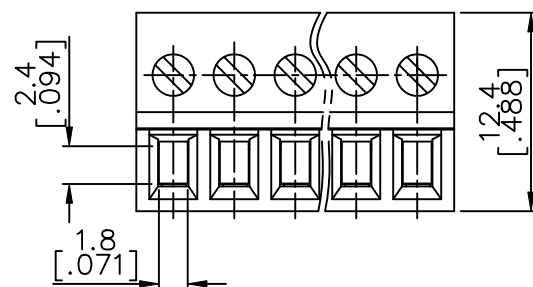
N = Number of poles
 Dim A = $N \times 3.5 [.138] + 0.80 [.031]$
 Dim B = $(N-1) \times 3.5 [.138]$

Poles	Tolerance
2-4p	$\pm 0.10 [.004]$
5-7p	$\pm 0.15 [.006]$
8-12p	$\pm 0.20 [.008]$
13-18p	$\pm 0.25 [.010]$
19-24p	$\pm 0.30 [.012]$

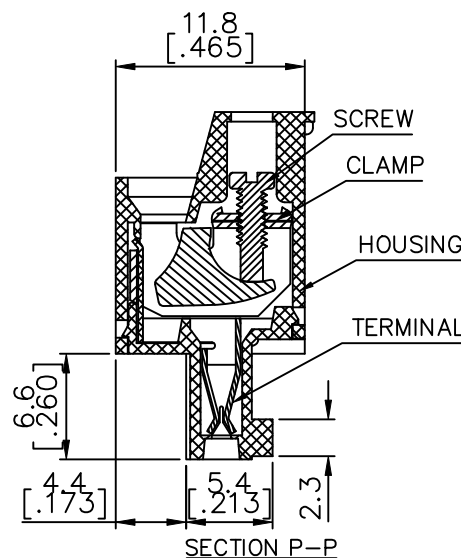
2p to 6p with wedge, above 7p
 without wedge (including 7p)

mat'l. code				surface ASME Y14.5 ✓	tolerance ASME Y14.5	projection MM [INCH]	product family TERMINAL BLOCK
ltr	ecn no	dr	date	tolerances unless otherwise specified			title
D				angles	X.±0.5 X.X±0.3 X.XX±0.1	scale	TERMINAL BLOCK PLUGGABLE, PLUG, SIGNAL, W/O FLANGE FRONT SCREW
		dr	WENDY CHEN	051810			sheet 2 of 5
		enr	JASON HSU	051810			size
		chr	GARY HSIEH	051810			20020013
		appd	JOSEPH HSIA	051810			A4
sheet index	revision sheet						type
							CUSTOMER Drawing

PRODUCT NUMBER	SERIES NAME	PITCH
20020013-DXXXXXL	03-381	3.81 mm



2p to 6p with wedge, above 7p
without wedge (including 7p)

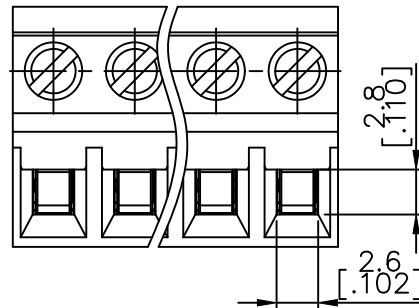


N = Number of poles
Dim A = $N \times 3.81 [0.150] + 0.80 [0.031]$
Dim B = $(N-1) \times 3.81 [0.150]$

Poles	Tolerance
2-6p	$\pm 0.15 [0.006]$
7-12p	$\pm 0.20 [0.008]$
13-17p	$\pm 0.25 [0.010]$
18-24p	$\pm 0.30 [0.012]$

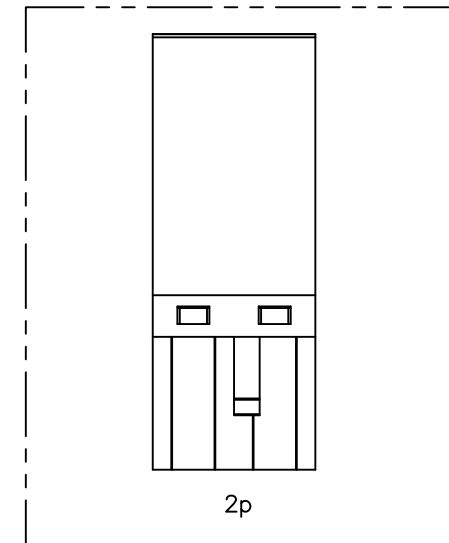
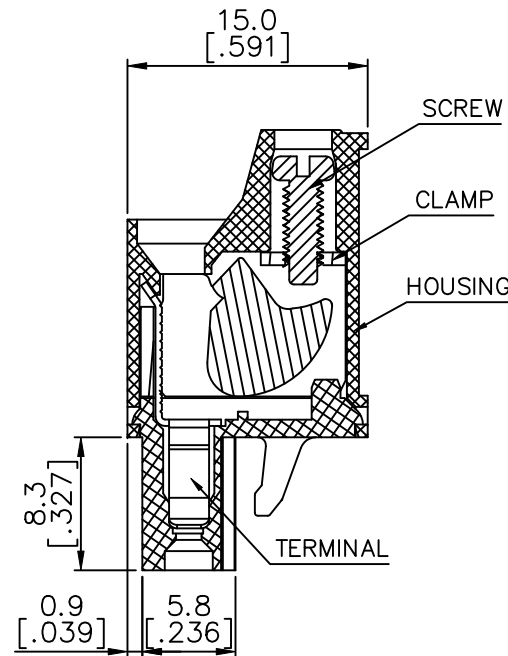
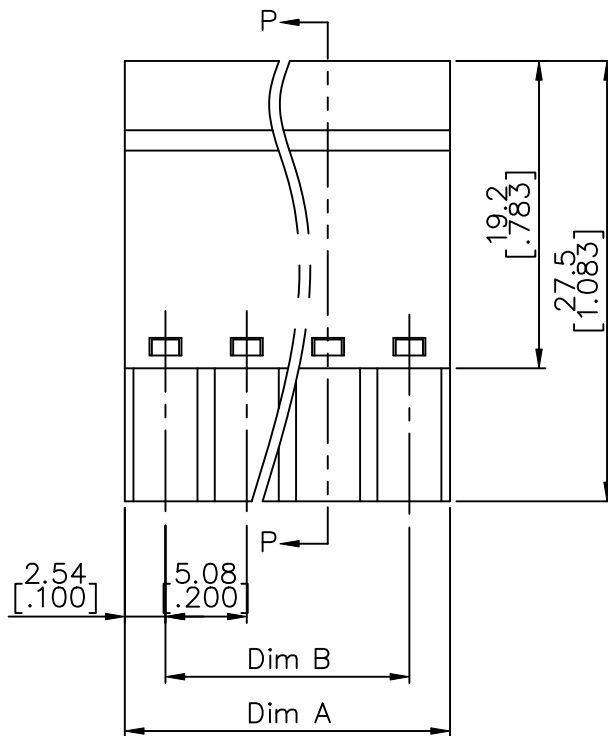
mat'l. code				surface ASME Y14.5 ✓	tolerance ASME Y14.5	projection MM [INCH]	product family TERMINAL BLOCK			
ltr	ecn no	dr	date	tolerances unless otherwise specified			title			
D				angles	X.±0.5 X.X±0.3 X°±1°		TERMINAL BLOCK PLUGGABLE, PLUG, SIGNAL, W/O FLANGE FRONT SCREW			
				dr	WENDY CHEN 051810		sheet 3 of 5 size			
				enr	JASON HSU 051810		20020013 A4			
				chr	GARY HSIEH 051810					
				appd	JOSEPH HSIA 051810		type CUSTOMER Drawing			
sheet index	revision sheet									

PRODUCT NUMBER	SERIES NAME	PITCH
20020013-HXXXXXXLF	03-508	5.08 mm



N = Number of poles
Dim A = $N \times 5.08$ [.200]
Dim B = $(N-1) \times 5.08$ [.200]

Poles	Tolerance
2-6p	± 0.15 [.006]
7-12p	± 0.25 [.010]
13-18p	± 0.30 [.012]
19-24p	± 0.40 [.016]



mat'l. code				surface ASME Y14.5 ✓	tolerance ASME Y14.5	projection MM [INCH]	product family TERMINAL BLOCK
ltr	ecn	no	dr	date			title
D				angles	X.±0.5 X.X±0.3 X.XX±0.1	scale	TERMINAL BLOCK PLUGGABLE, PLUG, SIGNAL, W/O FLANGE FRONT SCREW
			dr	WENDY CHEN	051810	FCI	dwg no
			enr	JASON HSU	051810		sheet 5 of 5
			chr	GARY HSIEH	051810		size
			appd	JOSEPH HSIA	051810		A4
sheet index	revision sheet						type
							CUSTOMER Drawing

Mouser Electronics

Authorized Distributor

Click to View Pricing, Inventory, Delivery & Lifecycle Information:

Amphenol:

[20020013-H021B01LF](#) [20020013-H061B01LF](#) [20020013-H031B01LF](#) [20020013-H101B01LF](#) [20020013-H081B01LF](#)
[20020013-G031B01LF](#) [20020013-G081B01LF](#) [20020013-G041B01LF](#) [20020013-H041B01LF](#) [20020013-](#)
[G021B01LF](#) [20020013-G061B01LF](#) [20020013-H051B01LF](#)