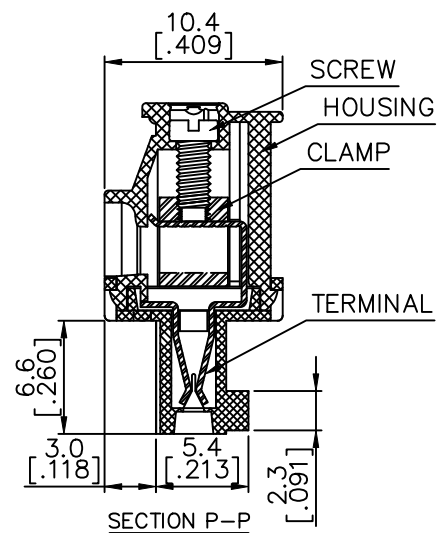
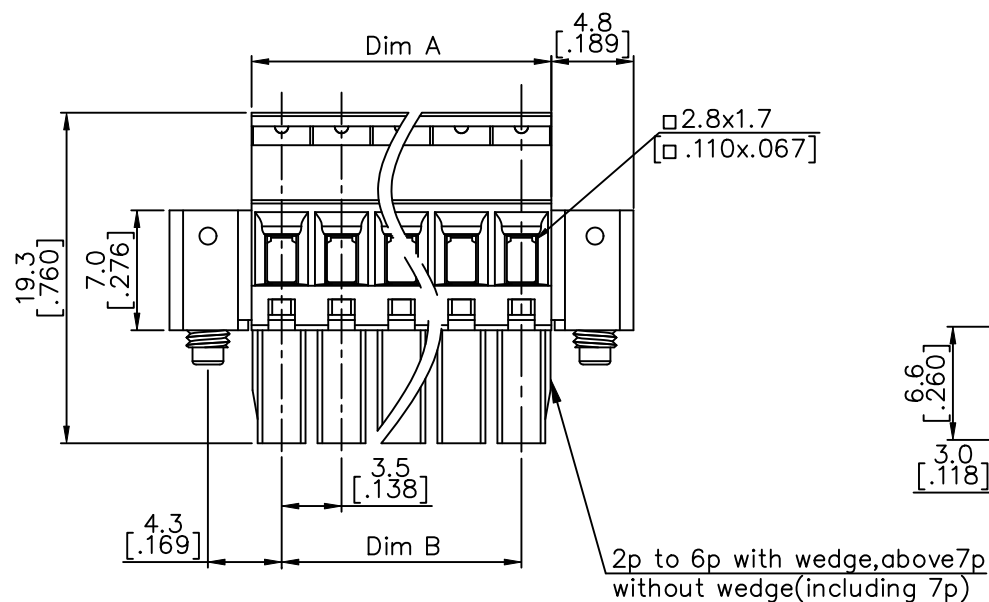
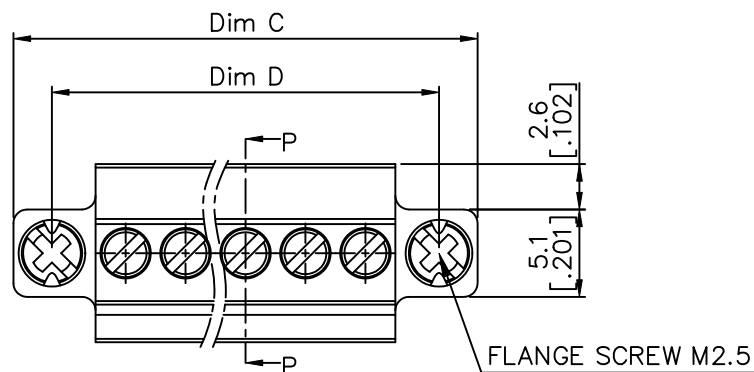


Printed: Sep 23, 2011

PRODUCT NUMBER	SERIES NAME	PITCH
20020011-CXXXXXXLF	02-350	3.50 mm



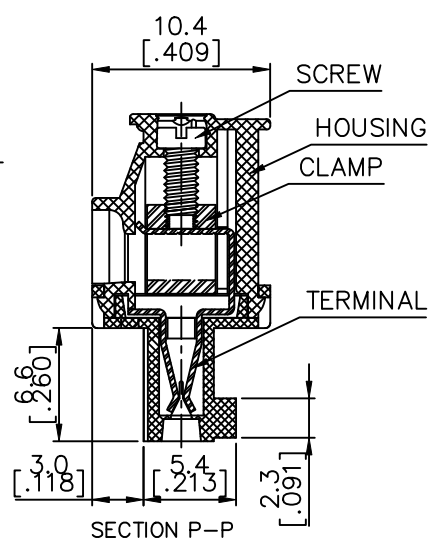
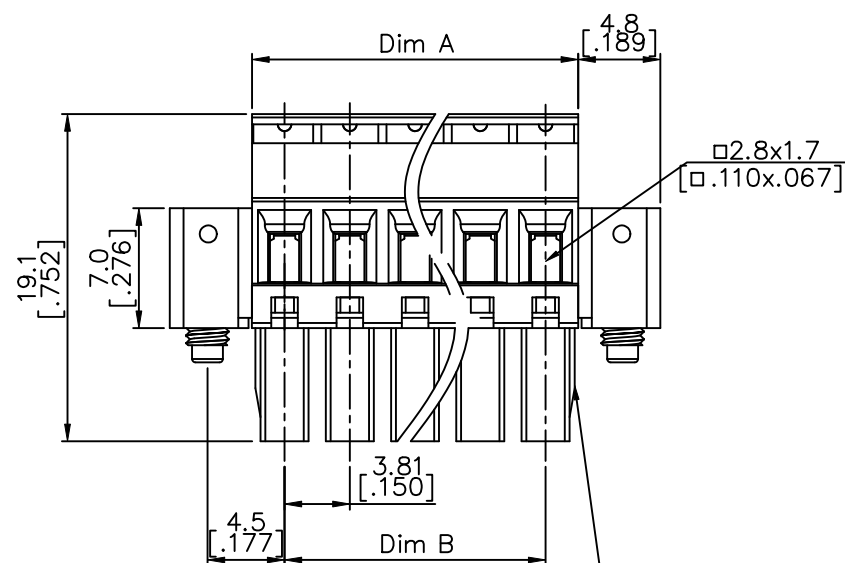
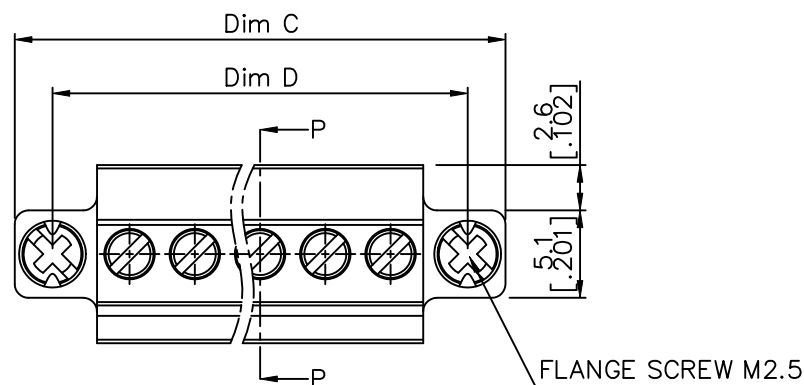
N = Number of poles

Dim A	NX3.5[.138]
Dim B	(N-1)X3.5[.138]
Dim C	NX3.5[.138]+9.6[.378]
Dim D	(N-1)X3.5[.138]+8.6[.339]

poles	Tolerance
2-4p	±0.10[.004]
5-7p	±0.15[.006]
8-12p	±0.20[.008]
13-18p	±0.25[.010]
19-24p	±0.30[.012]

mat'l. code		surface ASME Y14.5 ✓	tolerance ASME Y14.5	projection MM [INCH]	product family TERMINAL BLOCK
ltr	ecn no	dr	date	tolerances unless otherwise specified	title TERMINAL BLOCK PLUGGABLE PLUG, BACK SIDE HOOK, W/FLANGE
E				angles X°±1°	sheet 2 of 5 size
				linear X.XX±0.1	20020011 A4
		dr	WENDY CHEN 051810	scale	type CUSTOMER Drawing
		enr	JASON HSU 051810		
		chr	GARY HSIEH 051810		
		appd	JOSEPH HSIA 051810		
sheet index	revision sheet				

PRODUCT NUMBER	SERIES NAME	PITCH
20020011-DXXXXXXLF	02-381	3.81 mm



N = Number of poles

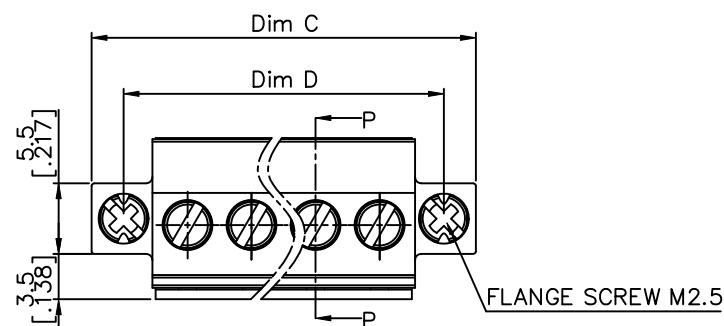
Dim A	$N \times 3.81 [.150]$
Dim B	$(N-1) \times 3.81 [.150]$
Dim C	$N \times 3.81 [.150] + 9.6 [.378]$
Dim D	$(N-1) \times 3.81 [.150] + 9.0 [.354]$

poles	Tolerance
2-6P	$\pm 0.15 [.006]$
7-12p	$\pm 0.20 [.008]$
13-17p	$\pm 0.25 [.010]$
18-24p	$\pm 0.30 [.012]$

2p to 6p with wedge, above 7p
without wedge (including 7p)

mat'l. code				surface ASME Y14.5 ✓	tolerance ASME Y14.5	projection MM [INCH]	product family TERMINAL BLOCK
ltr	ecn no	dr	date	tolerances unless otherwise specified			title
E				angles	$X \pm 0.5$	scale	TERMINAL BLOCK
				linear	$X.X \pm 0.3$		PLUGGABLE PLUG, BACK SIDE HOOK,
				$X^\circ \pm 1^\circ$	$X.XX \pm 0.1$		W/FLANGE
		dr	WENDY CHEN 051810				sheet 3 of 5 size
		engr	JASON HSU 051810				20020011 A4
		chr	GARY HSIEH 051810				
		appd	JOSEPH HSIA 051810				
sheet index	revision sheet						type CUSTOMER Drawing

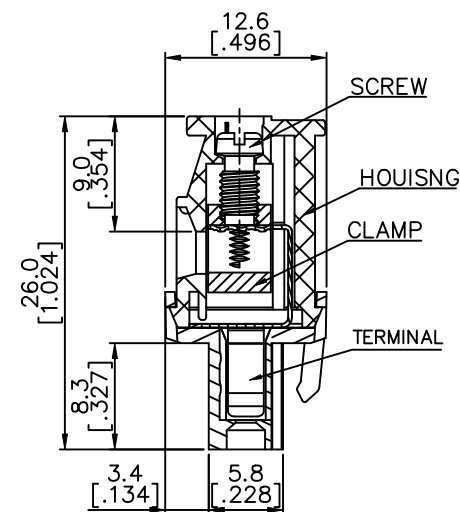
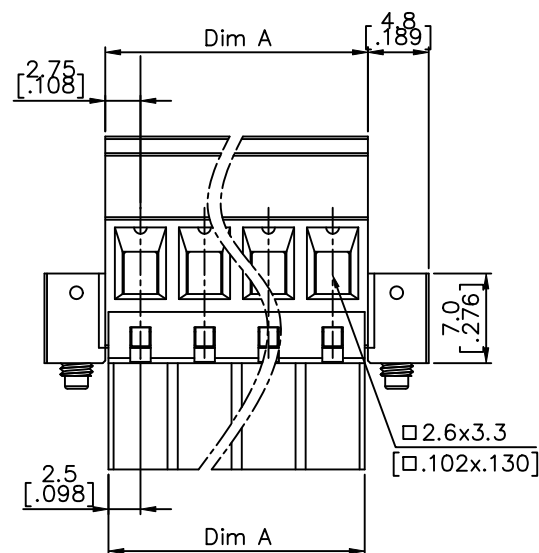
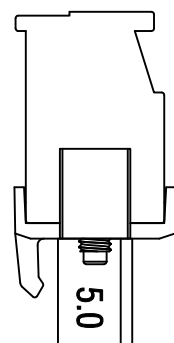
PRODUCT NUMBER	SERIES NAME	PITCH
20020011-GXXXXXXLF	02-500	5.00 mm



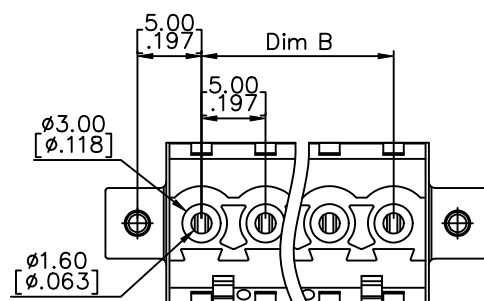
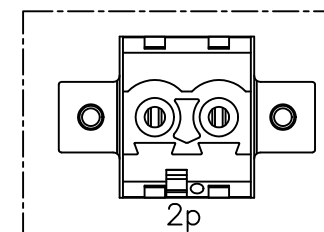
N = Number of poles

Dim A	$N \times 5.0 [0.197] + 0.5 [0.020]$
Dim B	$(N-1) \times 5.0 [0.197]$
Dim C	$N \times 5.0 [0.197] + 10.0 [0.394]$
Dim D	$(N+1) \times 5.0 [0.197]$

poles	Tolerance
2-6p	$\pm 0.15 [0.006]$
7-12p	$\pm 0.20 [0.008]$
13-18p	$\pm 0.30 [0.012]$
19-24p	$\pm 0.40 [0.016]$

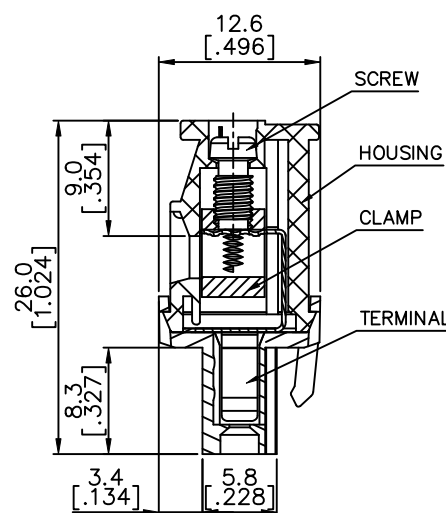
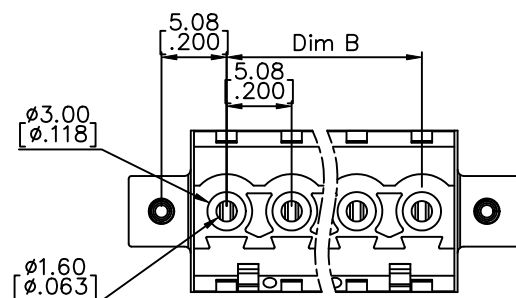
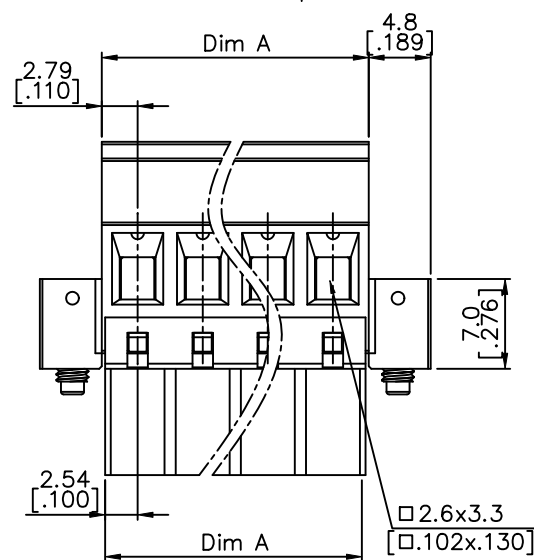
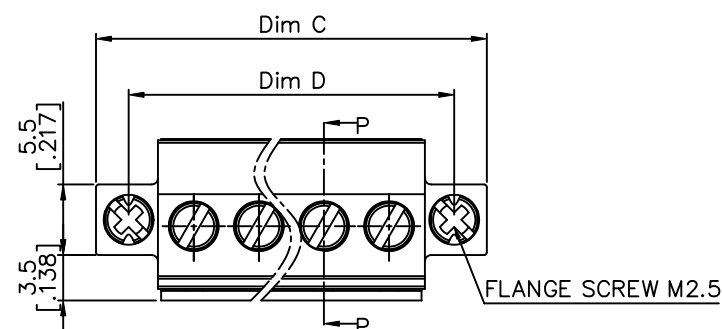


SECTION P-P



mat'l. code	surface ASME Y14.5	tolerance ASME Y14.5	projection MM INCH	product family TERMINAL BLOCK
ltr	ecn no	dr	date	title
E				TERMINAL BLOCK PLUGGABLE PLUG, BACK SIDE HOOK, W/FLANGE
				sheet 4 of 5 size
				20020011 A4
				type CUSTOMER Drawing
sheet index	revision	sheet		

PRODUCT NUMBER	SERIES NAME	PITCH
20020011-HXXXXXXLF	02-508	5.08 mm

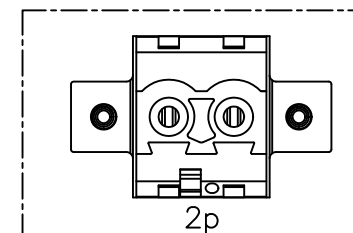


SECTION P-P

N = Number of poles

Dim A	$N \times 5.08 [.200] + 0.5 [.020]$
Dim B	$(N-1) \times 5.08 [.200]$
Dim C	$N \times 5.08 [.200] + 9.66 [.380]$
Dim D	$(N+1) \times 5.08 [.200]$

poles	Tolerance
2-6p	$\pm 0.15 [.006]$
7-12p	$\pm 0.20 [.008]$
13-18p	$\pm 0.30 [.012]$
19-24p	$\pm 0.40 [.016]$



mat'l. code	surface ASME Y14.5	tolerance ASME Y14.5	projection MM [INCH]	product family TERMINAL BLOCK
ltr	ecn no	dr	date	title TERMINAL BLOCK PLUGGABLE PLUG, BACK SIDE HOOK, W/FLANGE
E				sheet 5 of 5 size
				dwg no
				20020011 A4
				type
				CUSTOMER Drawing
sheet index	revision sheet			

Mouser Electronics

Authorized Distributor

Click to View Pricing, Inventory, Delivery & Lifecycle Information:

Amphenol:

[20020011-G081B01LF](#) [20020011-H081B01LF](#) [20020011-G021B01LF](#) [20020011-H031B01LF](#) [20020011-H061B01LF](#) [20020011-G041B01LF](#) [20020011-G101B01LF](#) [20020011-H021B01LF](#) [20020011-H041B01LF](#) [20020011-G061B01LF](#) [20020011-H101B01LF](#) [20020011-G031B01LF](#)